

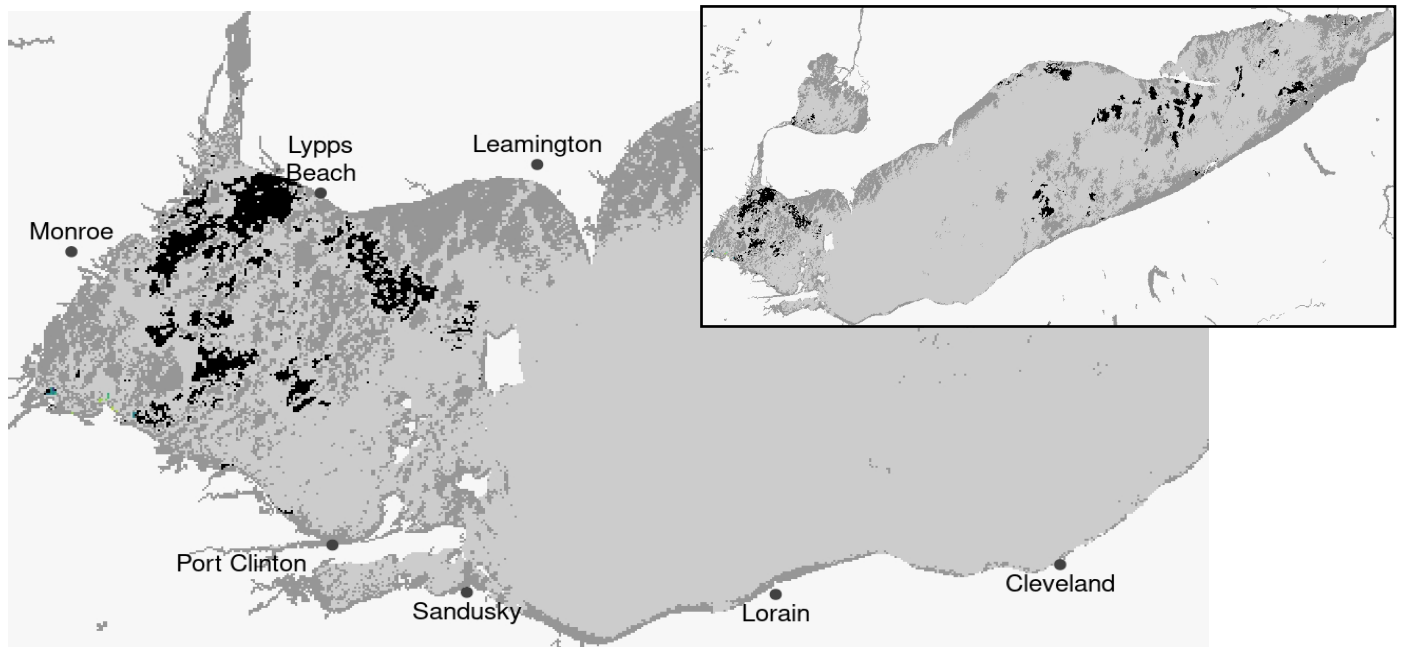
Lake Erie Harmful Algal Bloom Forecast

Imagery Analysis & Forecasts - Last Updated 2020/07/23 09:45 (EDT)

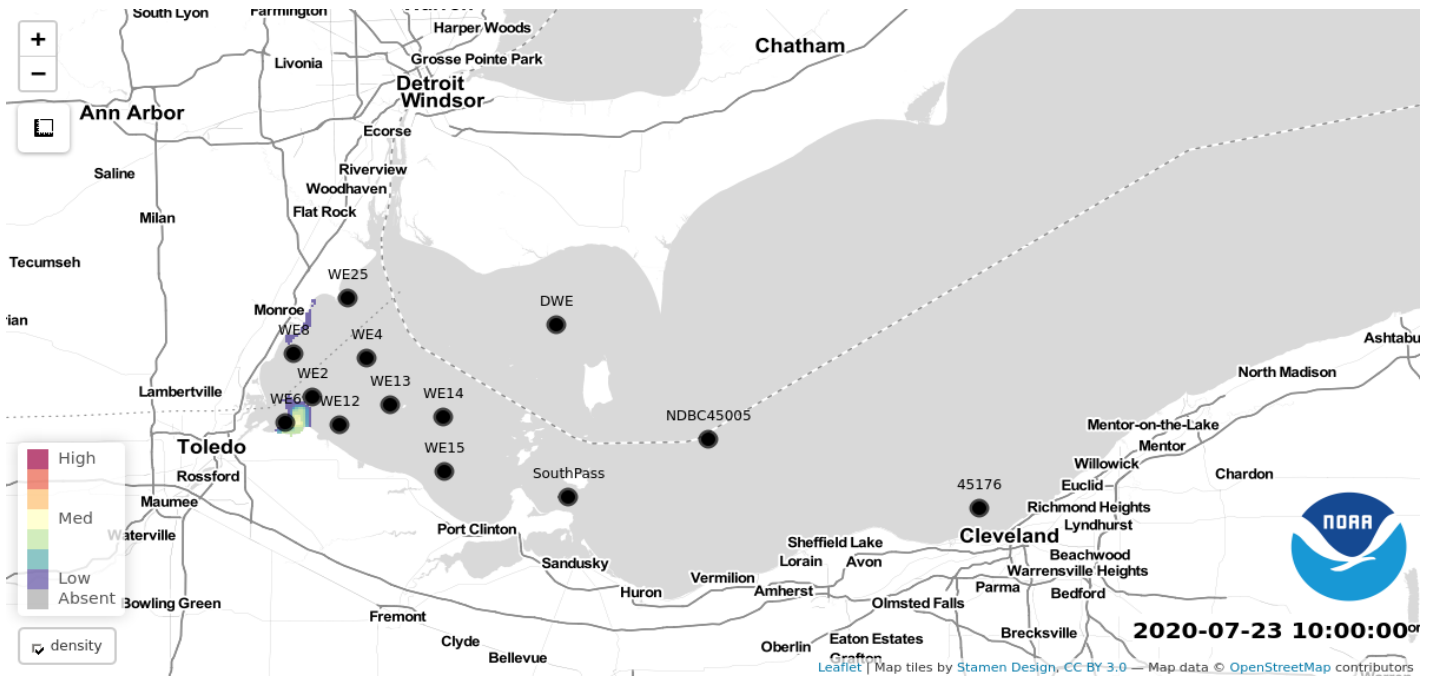


A bloom of *Microcystis* cyanobacteria continues in the western basin of Lake Erie. The bloom is present in Maumee Bay, extending north along the Michigan coast towards Brest Bay and east of Maumee Bay along the Ohio coast towards the Magee Marsh Wildlife Area. No new scum formation has been reported or observed in recent unobscured imagery. Sampling (7/20) indicates toxin concentrations have increased since last week, but remain below the recreational threshold at most locations. *Keep pets and yourself out of the water in areas where scum is forming.*

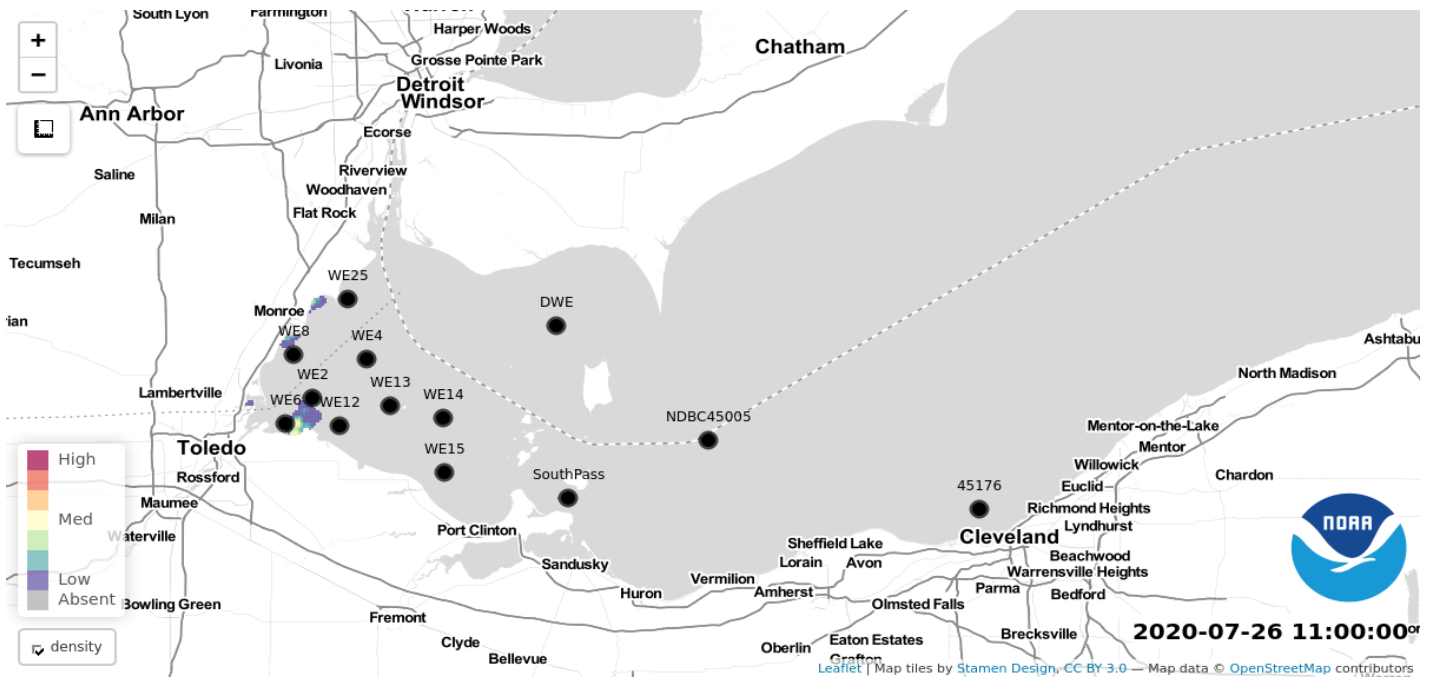
Forecast winds (3-17 kn) may promote periods of surface scum formation through Saturday (7/25), before becoming favorable for mixing of *Microcystis* concentrations Sunday and Monday (7/26-27). Forecast conditions will minimize potential for transport of *Microcystis* concentrations in the western basin through Monday. - Davis, Keeney



Modeled Bloom Position & Vertical Mixing at 2020/07/23 10:00 (EDT)



72-Hour Bloom Position & Vertical Mixing at 2020/07/26 11:00 (EDT)



Additional Resources

- Find a safe place for recreation through the Ohio Dept. of Health's Beach Water Quality Advisory, [BeachGuard](#).
- Learn more about water quality sampling and data monitoring by visiting the [Ohio EPA's site for HABs](#).
- Great Lakes HAB monitoring data and forecast research by [NOAA's GLERL](#).
- Frequently Asked Questions - [FAQ's](#).