

MARDI GRAS

WEDNESDAY EVENING
July 16th, 1924

FUN FOR ALL

Prizes For The
Best Costumes

Everybody Welcome

GRAND PARADE

Will start at 9:00 P. M.

Assemble at Put-in-Bay Town Hall,
(opposite Post Office) at 8:30 P. M.

Entertainment Committee will
distribute noisemakers, flares,
novelties, etc., just before start
of parade.

COM. A. G. SMITH, - - Marshal
COM. T. B. ALEXANDER, Aide to Marshal

PROPERTY OF
WLEHS

No. _____

INTER-LAKE YACHTING ASSOCIATION



31ST ANNUAL REGATTA
JULY 13 — 19 1924
PUT-IN-BAY, OHIO

32
33
34

FILE NO.	PHOTO DATE
TITLE	
PLACE	HELEN BROOKS
COLLECTION	WLEHS - COLLECTION

YACHTSMEN'S FUND

of the

Inter-Lake Yachting Association

Organized—Sandusky, Ohio, December 2, 1916
Incorporated in Ohio, October 1919

HARRY AUSTIN, Sec'y-Treas., 1835 David Whitney Bldg., Detroit, Mich.

An Endowment Fund

To support and perpetuate the Inter-Lake Yachting Association for clean sport, good associations and healthy recreation; to provide a means whereby those who cherish memories of the past and those who are active in the present may help the Association and express their appreciation for benefits received; to enable the association to accomplish more in the future; to allow those who will and can to do what others would but cannot.

Make your contribution to the Treasurer now

Board of Trustees— 924

President - Wm. R. Huntington, P. I. B. Y. C.
Vice-President - F. W. Roberts, C. Y. C.
Secretary-Treasurer - Harry Austin
(1835 David Whitney Bldg., Detroit)

Dr. A. R. Hackett, D. Y. C. Sidney Frohman, S. Y. C.
Wm. J. Billingslea, M. R. Y. C. S. O. Richardson, T. Y. C.
Henry W. Hess, T. Y. C. F. W. Wakefield, V. B. C.

Endowment Fund Trustees

Finance Committee

(Elected for Life)

Wm. R. Huntington S. O. Richardson, Jr.
F. W. Roberts

Associate Governors

Alex I. McLeod, Algonac Geo. T. Bliss, Erie
Geo. H. Gardner, Cleveland Geo. H. Wood, Monroe
Harry D. Freeman, Columbus T. B. Alexander, Put-in-Bay
Chas. W. Kotcher, Detroit J. W. Koehrman, Toledo
R. George Marsh, Detroit Paul H. Jones, Toledo
C. F. Decker, Vermilion



Our Marine Catalog, new edition with 1924 prices is now off the press. Send for it.

FROM NAILS TO ANCHORS

We furnish out of stock Everything for Building, Equipping and Repairing Boats

*Marine Hardware,
Motor Boat Supplies,
Wire Rope and Cordage,
Tents and Flags*

Geo. B. Carpenter & Co.

MARINE SUPPLIES

440 N. Wells St.

Chicago

**Sailmakers
and
Riggers**



W. LEAS - HELEN
BROOKS COLLECTION



OTTO F. BARTHEL
Commodore

I. L. Y. A. 1924

Inter-Lake Yachting Association

Organized January 17th, 1885

CLUBS ENROLLED

Bay City Boat Club	Grosse Pointe Yacht Club
Bayview Yacht Club, Detroit	Lorain Power Boat Club
Bay View Yacht Club, Toledo	Maumee River Yacht Club
Buckeye Lake Yacht Club	Miss Detroit Power Boat Assn.
Buffalo Canoe Club	Monroe Yacht Club
Buffalo Launch Club	Ottawa River Yacht Club
Buffalo Yacht Club	Port Clinton Yacht Club
Cleveland Boat Club	Port Huron Yacht Club
Cleveland Yacht Club	Put-in-Bay Yacht Club
Country Club of Detroit	Riverside Boat Club, Lakew'd
Detroit Boat Club Yachtsmen	Riverside Boat Club, Toledo
Detroit Yacht Club	Sandusky Yacht Club
Edison Boat Club	Toledo Yacht Club
Erie Yacht Club	Vermilion Boat Club

PAST COMMODORES

*Geo. W. Gardner, C. Y. C.	1894
*John E. Gunkel, T. Y. C.	1895
*Geo. H. Worthington, C. Y. C.	1896
S. O. Richardson, Jr., T. Y. C.	1897
Alex. I. McLeod, D. Y. C.	1898
Geo. T. Bliss, E. Y. C.	1899
Geo. F. Anderson, S. Y. C.	1900
Wm. R. Huntington, S. Y. C.	1901
*C. C. Warren, S. Y. C.	1902
*Henry Tracy, T. Y. C.	1903
John H. Smedley, D. B. C. Y.	1904
*Geo. H. Worthington, C. Y. C.	1905
John F. Craig, T. Y. C.	1906
Frank W. Fletcher, T. B. Y. A.	1907
*Geo. H. Worthington, C. Y. C.	1908
S. O. Richardson, Jr., T. Y. C.	1909
C. G. Jennings, C. C. of D.	1910
Alexander Winton, L. Y. C.	1911
Wm. R. Huntington, S. Y. C.	1912
*Geo. H. Worthington, C. Y. C.	1913
Henry W. Hess, T. Y. C.	1914
Harry C. Kendall, D. Y. C.	1915
Emil G. Schmidt, S. Y. C.	1916
Alexander Winton, C. Y. C.	1917
Wm. R. Huntington, S. Y. C.	1918
R. George Marsh, G. P. Y. C.	1919
F. W. Wakefield, V. B. C.	1920
F. W. Roberts, C. Y. C.	1921
C. W. Kotcher, D. Y. C.	1922
Sidney Frohman, S. Y. C.	1923

*Deceased.

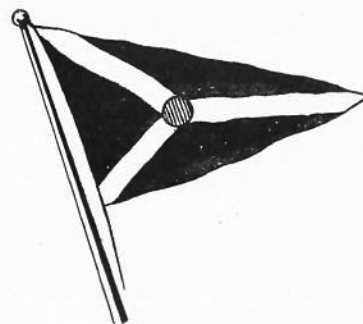


W. G. ALEXANDER
Vice-Commodore

I. L. Y. A.
Flag Officers
1924



E. E. NOBLE
Rear-Commodore



OFFICERS 1921

Commodore, Otto F. Barthel, D. Y. C.
Vice-Commodore, W. G. Alexander, B. V. Y. C.
Rear-Commodore, E. E. Noble, C. Y. C.
Secretary-Treasurer, Leo J. Monahan, D. Y. C.
Fleet Captain, Robt. Oakman, D. Y. C.
Fleet Surgeon, Dr. Wm. A. Wilson, D. Y. C.
Fleet Chaplain, Rev. D. Selinger, P. B. Y. C.
Librarian, W. J. Billingslea, M. R. Y. C.
Sail Yacht Measurer, R. A. Luedtke, T. Y. C.
Power Boat Measurer, W. V. Gorton, C. B. C.

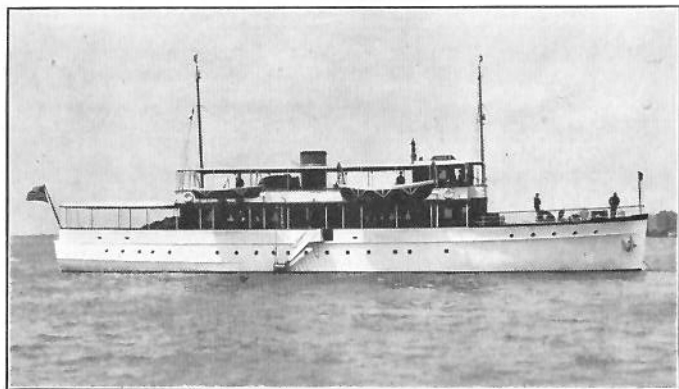
Trustees of Yachtsmen's Fund

W. R. Huntington, P. B. Y. C.
S. O. Richardson, Jr., T. Y. C.
F. W. Wakefield, V. B. C.
F. W. Roberts, C. Y. C.
Henry Hess, T. Y. C.
Sidney Frohman, S. Y. C.
A. R. Hackett, D. Y. C.
W. J. Billingslea, M. R. Y. C.
Harry Austin, D. B. C. Y. Sec'y-Treas.
1835 David Whitney Bldg., Detroit.

Delegates to Yacht Racing Union

Dr. C. G. Jennings, C. C. D.
Otto F. Barthel, D. Y. C.
Robt. E. Power, C. Y. C.

IT'S
LARGEST
YEAR
AFLOAT
"IT OTTO B."



MAMIE O.

I. L. Y. A. Flagship 1924

Owned by Fleet Captain Robt. Oakman, D. Y. C.

*Through whose courtesy the yacht is
used as Flagship during the regatta*

OPEN HOUSE ON FLAGSHIP

Commodore Barthel will hold open house on the Flagship "Mamie O.", Monday, July 14th from 2:00 P. M. to 4:00 P. M. All registered yachtsmen are invited to attend.

Inter-Lake Committees

Sail Yacht Judges Committee

Com. F. W. Wakefield, V. B. C., Chairman
Com. S. O. Richardson, T. Y. C.
Com. H. D. Freeman, B. L. Y. C.
Com. C. G. Jennings, D. B. C. Y.
Com. A. A. Temperton, D. B. C. Y.
Com. W. F. Jennison, B. C. Y. C.
Com. Robert E. Power, C. Y. C.
Com. H. H. Clough, P. H. Y. C.
Com. W. F. Bracer, T. Y. C.
Com. A. N. Simmons, E. B. C.

Sail Yacht Rules Committee

Harry Austin, D. B. C. Y. Chairman
P. C. Williamson, B. V. Y. C.
K. A. Luedtke, T. Y. C.
W. J. Biltlingstea, M. R. Y. C.
J. A. Schell, D. Y. C.

Sail Yacht Regatta Committee

Com. Hugh B. Gunnison, D. Y. C., Chairman
John A. Schell, D. Y. C.
R. Rousseau, B. V. Y. C.
H. D. Freeman, B. L. Y. C.
C. B. Solders, C. B. C.
J. J. Gannon, P. H. Y. C.
C. B. Cornell, B. L. Y. C.
Harold Hall, D. Y. C.

Power Boat Judges Committee

Com. C. W. Kotcher, D. Y. C., Chairman
Com. W. L. Urschel, T. Y. C.
Com. E. Quigley, C. Y. C.
Com. W. R. Huntington, S. Y. C.
Com. Henry W. Hess, T. Y. C.

Power Boat Rules Committee

Dr. A. R. Hackett, D. Y. C., Chairman
Com. Henry W. Hess, T. Y. C.
Com. R. H. Sidway, B. L. C.
Wm. F. Meier, C. Y. C.
W. V. Gorton, C. B. C.

Power Boat Regatta Committee

Dr. A. R. Hackett, D. Y. C., Chairman
W. F. Meier, C. Y. C.
Com. E. E. Noble, C. Y. C.
Lee Keller, C. Y. C.
W. V. Gorton, C. B. C.

Publicity Committee

W. D. Edenburn, D. Y. C., Chairman
 Rollin Starr, T. Y. C.
 Ed. L. Ways, S. Y. C.
 John G. Robinson, C. Y. C.
 Harry Bullion, D. Y. C.
 Ed. F. Bangs, C. Y. C.
 K. W. Hall, D. Y. C.
 L. A. Ktewer, T. Y. C.

Squadron Sail Committee

Com. A. A. Schantz, D. Y. C., Chairman
 Com. W. G. Sheehan, B. V. Y. C.
 Com. A. G. Smith, P. B. Y. C.
 Com. Henry Thomas, C. Y. C.
 Com. G. H. Wood, M. Y. C.
 Com. H. B. Williams, D. B. C.

Squadron Cruise to Pt. Clinton

Com. Geo. Ketcham, Pt. C. Y. C., Chairman
 Com. Sidney Frohman, S. Y. C.
 Com. W. L. Urschel, T. Y. C.
 Com. F. W. Wakefield, V. B. C.
 Com. W. H. Reinhart, S. Y. C.

Trophy Committee

Com. Hugh B. Gunnison, D. Y. C., Chairman
 Com. A. G. Smith, P. B. Y. C.
 Com. W. G. Alexander, B. V. Y. C.
 Com. E. E. Noble, C. Y. C.
 Dr. A. R. Hackett, D. Y. C.
 W. D. Edenburn, D. Y. C.

Ladies' Entertainment Committee

Mrs. Geo. Jerome, D. Y. C., Chairman
 Mrs. A. G. Smith, P. B. Y. C.
 Mrs. F. R. Frey, D. Y. C.
 Mrs. F. W. Roberts, C. Y. C.
 Mrs. H. B. Gunnison, E. B. C.
 Mrs. Robert Oakman, D. Y. C.
 Mrs. O. F. Barthel, D. Y. C.

Entertainment Committee

Ed. Zerbe, D. Y. C., Chairman
 Com. A. G. Smith, P. B. Y. C.
 Com. Frank R. Frey, D. Y. C.
 Com. W. H. Reinhart, S. Y. C.
 Com. T. B. Alexander, P. B. Y. C.
 Walter M. Parker, Jr., B. V. Y. C.
 H. A. Buchbinder, D. Y. C.
 C. D. Lynch, D. Y. C.
 Arthur Keil, D. Y. C.
 Carl Mathias, T. Y. C.
 Chas. F. Decker, V. B. C.
 Jos. S. Fleming, D. Y. C.
 Warren Roberts, C. Y. C.
 Lee Keller, S. Y. C.
 J. F. Nagel, E. B. C.

Other Sports Committee

G. A. Thompkins, D. Y. C., Chairman
 Geo. H. Stellberger, B. V. Y. C.
 Larry Sackett, B. L. Y. C.
 A. B. Heavenrich, D. Y. C.
 Geo. Pierce, B. L. Y. C.
 Leo. J. Monahan, D. Y. C.
 Tom Van Sickle, D. Y. C.

Prize Distribution Committee

Com. Geo. Jerome, D. Y. C., Chairman
 Leo J. Monahan, D. Y. C.
 A. M. Gibson, E. B. C.
 H. B. Gunnison, E. B. C.
 A. R. Hackett, D. Y. C.
 W. J. Billingslea, M. R. Y. C.
 H. M. Hill, Jr., B. C. C.
 Walter Hock, D. C. C.
 E. J. Stafford, D. Y. C.

Dependable as YOUR Big Engine

See the "Lightweight Champion" at the Regattas. Write for catalog describing complete line of Evinrude Detachable and Built-in Motors, both one and two-cylinder.

EVINRUDE MOTOR COMPANY
 144 Evinrude Building Milwaukee, Wis.

EVINRUDE
 SPORT TWIN

Home
 Phone:



Main
 672

Equipped Sailors Enjoy Safety, Comfort and Contentment
 The Best of Everything in Boat Tops, Life Preservers
 Cushions and Upholstery

Write or Phone for Estimates

C. Z. KROH MANUFACTURING CO.
 1212-1214 Jackson St.

Toledo, Ohio

Yachting Association Prizes

The Inter-Lake Yachting Assn. is indebted to the following donors for the trophies and other prizes listed and the Trophy Committee wishes to take this opportunity of thanking these individuals and firms and assure them that the donations are most sincerely appreciated.

POWER BOAT RACES

First Prizes

- Class "A"—J. J. Trudell Trophy (Cup).
- Class "B"—Detroit News Trophy (Cup)
- Class "E"—Com. Chas. F. Clippert Trophy (Cup).
- Class "F"—Chas. E. Sorenson Trophy (Cup).
- Class "G"—Com. Geo. H. Ketcham Trophy. (Cup).
- Class "H"—Com. Wm. L. Urschel Trophy (Cup).
- Class "J"—Detroit Free Press Trophy (Cup).
- Class "K"—Com. Sidney Frohman Trophy (Cup)

SAIL BOAT RACES

First Prizes

- Class "A"—Com. A. A. Templeton Trophy (Cup).
- Class "R"—Com. H. A. Parsons Perpetual Trophy.
- Class "Y"—Com. M. W. Allen Trophy (Cup).
- Class "H"—Robert L. Kerr Trophy.
- Class "J"—Barthel Trophy (Cup).
- Class "Star"—Put-in-Bay Yacht Club Trophy (Cup).
- Class "K"—Shader-Winckler Trophy (Cup)
- Class "CK"—Com. R. Geo. Marsh Trophy (Cup).
- Class "CC"—Weyhing Bros. Trophy (Cup).

PRIZES FOR NOVELTY RACES

Commodores' Cat Boat Race—Com. H. C. Kendall Trophy.

Ladies' Cat Boat Race—Com. J. L. Dexter Trophy.

Com. A. A. Schantz Trophy

This magnificent silver trophy will be presented by Commodore A. A. Schantz to the Yacht Club having the greatest number of boats, both sail and power, registered at the Regatta. (Dinghies, canoes and row boats excepted).

Com. R. George Marsh Flag

Commodore R. Geo. Marsh will present a club flag to the Yacht Club having the largest number of members registered at the Regatta.

OTHER PRIZES

Du Brie Marine Motors, Detroit, 5 H. P. Marine Engine.
 Tuttle & Clark, Detroit, Thermos Bottle Set.
 T. B. Rayl's, Detroit, Marine Glasses.
 Belle Isle-Hacker Boat Sales Co., Detroit, Mdse.
 Valentine & Co., New York City, 24 Qts. Varnish.
 W. D. Edenburn, Detroit, Mantel Clock.
 J. C. Goss & Co., Detroit, Flags.
 Noack & Gorenflo, Detroit, Ship's Clock
 F. A. Schaldenbrand, Detroit, Photographs.
 Hacker Boat Co., Detroit, Ship's Clock.
 Foamite-Childs Corp., Mayne Glock, distributor, Detroit,
 Fire-Gun Extinguisher.
 Martin Maier & Co., Detroit, 1 gl. Vacuum Carafe.
 Walter M. Parker, Jr., Detroit, 1 pair Shoes.
 Ted Beckhold, Detroit, 2 cases Pillsbury Flour.

A number of prizes were received too late to list the donors' names. The Trophy Committee wishes to thank all these donors, however, and to let them know that we appreciate their gifts greatly. The committee reserves the right to re-arrange prizes as necessary.

THINK OF IT !

100 H. P. Grant-Curtiss Marine Engine
Weight 600 lbs.

Your Fast Runabout Deserves One

Special offer to boat builders.

GRANT MARINE MOTOR CO.
 1246 Beaufait Ave. Detroit

C. F. Chapman Edits



*The Leading Authority on Motor Boat
Racing and All Things Marine*

PERHAPS you figure on picking up a copy of MoToR BoatinG at the nearest newstand, wherever you are. Why not let us send it to you every month by mail? It's surer, and costs no more.

25 cents a copy on the newstands

\$3.00 a year by mail (foreign \$4.00)

Address your subscription to

MoToR BoatinG

Dept. ILY-24

119 West 40th Street, New York City

Edited by Chas. F. Chapman, for 9 years Chairman of the
Racing Commission of the A. P. B. A.

General Information

Headquarters—New Put-in-Bay Yacht Clubhouse.
Secretary-Treasurer's office hours: 11:00 A. M. to 12:30
P. M. 4:00 P. M. to 6:00 P. M.

All visiting yachtsmen and ladies must register.

No entry fee will be charged in any event.

Sign your entry and state clearly all answers to questions.

Every yacht should be measured by the measurer of its home club and measurer's signature should be on entry blank.

All yachtsmen of the Inter-Lake and invited clubs, whether yacht owners or not, are invited and urged to participate in all of the events of the week and have their ladies participate wherever possible, to make the week successful in every way.

Get your entry in early to assist the Committees.

All schedules subject to change as necessary. Watch Bulletin.

Obtain entry blanks, racing numbers and racing information at Headquarters.

Postponements, changes in courses or events, results and all official announcements will be posted on the Bulletin Board at Headquarters. Watch it.

Two or more entries must be received or an event will be cancelled.

Prizes in any event will be awarded according to number of entrants. If two entrants, only one prize will be awarded; if three entries, two prizes, etc.

Ball Tickets, Banquet Tickets, etc., may be purchased at Headquarters.

The "Mamie O." will be the flagship of Commodore Otto F. Eartheil. All yachtsmen and others attending the regatta are invited to visit the flagship at any time during the meet.

All events of the regatta will be started promptly on time. Be on your mark.

The official time used at meet will be Put-in-Bay Yacht Club time, according to clock at Headquarters.

Register and Get Your Badge

Every registered yachtsman or lady will be given an identification badge which entitles them to draw for prizes. There will be a drawing for grand prizes at the Yachtsmen's Ball. You must be present at the ball to claim any prize awarded.

RULES

Certificate of measurement must be filed with entry. The Sail Yacht Regatta Committee reserves the right to order any yacht entered remeasured.

Races for all classes, starting five minutes apart on Tuesday, Wednesday and Friday mornings; starting first class at 8:55 A. M.

All races under Y. R. U. and I. L. Y. A. Rules, as amended to date.

In Class CK championship flag goes to skipper making highest percentage, cup to club having highest percentage with three boats.

Entries for all point races must be made with Sail Yacht Regatta Committee at headquarters before 6 P. M. Monday, July 14th, unless competing yacht arrives too late to enter before this time.

Alterations of the race program or sailing course may be made at the discretion of the Sail Yacht Regatta Committee. Such changes will be posted on Bulletin Board.

Numbers must be carried by each yacht on each side of its mainsail. These numbers will be supplied by the Sail Yacht Regatta Committee at Headquarters.

No person other than the Judges, Regatta Committee and Clerks will be allowed on Judges' boat without the consent of the Chairman of the Sail Yacht Regatta Committee.

All stakes to be left to port unless changed by Regatta Committee. If the Regatta Committee decides to reverse the course and have stakes left to starboard, a green flag will be flown from judges' boat. Red flag will mean all stakes to port. The Judges' boat will fly a white flag with blue letters R. C.

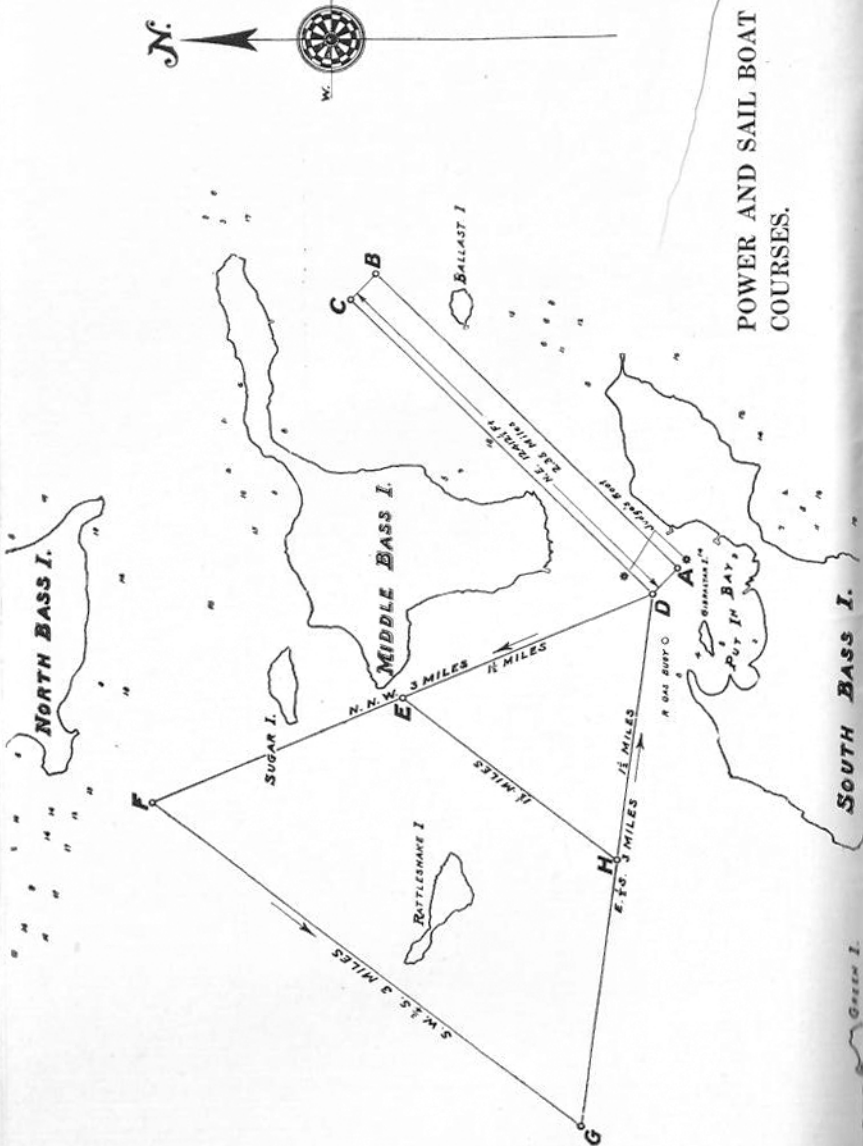
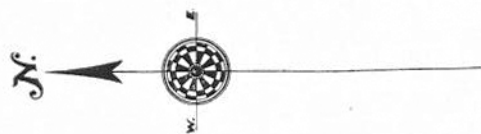
Guns must not be fired from any yacht within one hour of the time of starting races, and not until after every yacht has crossed the finish line.

All vessels following the races must keep to leeward, and at such distance as not to interfere with the maneuvers of the competing yachts.

The races are open to every yacht which complies with the rules and which is regularly enrolled in any club in the Inter-Lake Yachting Association, Y. R. U., or which has been invited to participate in the races.

All boats sailing the long outside course will have four hours time limit.

All boats sailing the short inside course will have three hours time limit.



SAIL YACHT PRIZES

Classes	1st Prize	2nd Prize	3rd Prize
A	Com. A. A. Templeton Trophy	Mdse.	Mdse.
H	Robert L. Kerr Trophy	Mdse.	Mdse.
J	T. E. Barthel Trophy	Mdse.	Mdse.
K	Shader-Winckler Trophy	Mdse.	Mdse.
CK	Com. Geo. Marsh Trophy	Mdse.	Mdse.
R	Com. H. A. Parsons Perp. Trophy	Mdse.	Mdse.
Y	Com. Mark W. Allen Trophy	Mdse.	Mdse.
Star	Put-in-Bay Yacht Club Trophy	Mdse.	Mdse.
CC	Weyhing Bros. Trophy	Mdse.	Mdse.

In addition to the Trophies listed above, championship flags will be awarded to all winners.

LADIES' CAT BOAT RACE

Ladies' Cat Boat Race—Com. John L. Dexter Trophy.

COMMODORES' CAT BOAT RACE

Commodores' Cat Boat Race—Com. H. C. Kendall Trophy.

SAILING COURSES

The course for all series races for sailing yachts in Classes A, R, H and Y will be triangular, starting from a line between a flag buoy off the east end of Gibraltar Island and a similar flag buoy in line with the west end of Middle Bass, to and around a stake three nautical miles N. N. W., thence to and around a stake three nautical miles S. W. three-quarter S., thence to and around a stake three nautical miles, E. one-half S. to and across starting line between starting stakes. In finishing yachts must cross the starting line in the opposite directions from which they start. All stakes must be left to port, unless otherwise ordered by the Sail Yacht Regatta Committee as heretofore provided.

The course for Classes Star, J, K, CC and CK, starting from the same line, will be a shorter triangle with the same compass courses, but with one and one-half miles to the side, or a total of four and one-half nautical miles.

RULES COVERING CLASS "Y" (CRUISING YAWLS)

All yachts in this class will be governed by the Y. R. U. rules, and will obtain their measurement rating under the Y. R. U. rules (as adopted at Spring Meeting I. L. Y. A. 1923); with following exceptions:

Use of pot lead or similar compounds prohibited.

Actual sail area shall be measured (not the forward triangle.).

Measurement shall be determined with full cruising equipment aboard, and all such equipment shall be carried aboard throughout all races (not including dinghy).

Two per cent will be added to actual sailing time of yachts without engine as allowance to yachts with engine.

Yachts equipped with engine shall have engine sealed.

There will be no restrictions on the number of passengers carried in this class in the races.

CLASS STAR: Rules of the Star Class Yacht Racing Association to govern.

TIME ALLOWANCE

Time allowance will be computed on yachts in Classes A and Y, under the formula and table of the Yacht Racing Union, 1923 Rules.

WATCH BULLETIN BOARD

There will be a Bulletin Board at Headquarters where changes in program and special instruction will be posted throughout the week.

All yachts whose preparatory gun has not been fired must keep clear of starting line. Any yacht willfully violating this rule will be disqualified.

Compliments of
AARON DE ROY MOTOR CAR CO.

Distributors of

HUDSON - ESSEX

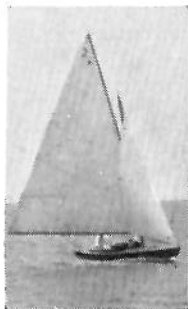
WOODWARD AVE. AT GARFIELD
Detroit, Michigan

POWER BOAT EVENTS

Classification

Class	Type
A	Open boats rating 50 and under.
B	Open boats rating over 50.
E	Cruisers measuring under 40 feet.
F	Cruisers measuring 40 to 60 feet.
G	Cruisers measuring 60 feet and over.
H	Express cruisers.
J	625 Cu. In. restricted class.
K	Outboard motor class.

Miller Chance Race.



Sailmakers and Riggers

Makers of

Yacht Flags and
Cushions.
Camp and Lawn
Furnishings.

Est. 1878

J.C. Goss Co.
QUALITY

Bates at Woodbridge Street, DETROIT, MICH.

TUESDAY, JULY 15th, 1924

Preparatory Gun at 1:20 P. M.

Class	Start	Dis.	Rules	Type of Boats
K	1:35	5 Mi.		Outboard motor
A	1:45	10 Mi.	I.P.B.U.	Open boats rat. 50 and under
B	1:50	15 Mi.	I.P.B.U.	Open boats rating 50 and over
E	2:10	10 Mi.	I.P.B.U.	Cruisers 40 and under
F	2:20	10 Mi.	I.P.B.U.	Cruisers 40 to 60
G	2:30	10 Mi.	I.P.B.U.	Cruisers 60 and over
H	2:40	15 Mi.	I.P.B.U.	Express cruisers
J	3:00	20 Mi.	Scratch	625 Restricted class

WEDNESDAY, JULY 16th

Preparatory Gun at 1:20 P. M.

Class	Start	Dis.	Rules	Type of Boats
K	1:35	5 Mi.		Outboard motor
A	1:45	10 Mi.	I.P.B.U.	Open boats rat. 50 and under
B	2:00	15 Mi.	I.P.B.U.	Open boats rating 50 and over
E	2:30	10 Mi.	I.P.B.U.	Cruisers 40 and under
F	2:45	10 Mi.	I.P.B.U.	Cruisers 40 to 60
G	3:00	10 Mi.	I.P.B.U.	Cruisers 60 and over
H	3:15	15 Mi.	I.P.B.U.	Express cruisers
J	3:30	20 Mi.	Scratch	625 Restricted class

THURSDAY, JULY 17th

Preparatory Gun at 8:30 A. M.

Class	Start	Dis.	Rules	Type of Boats
K	8:45	5 Mi.		Outboard motor
A	9:00	10 Mi.	I.P.B.U.	Open boats rat. 50 and under
B	9:15	15 Mi.	I.P.B.U.	Open boats rating 50 and over
E	9:45	10 Mi.	I.P.B.U.	Cruisers 40 and under
F	10:00	10 Mi.	I.P.B.U.	Cruisers 40 to 60
G	10:15	10 Mi.	I.P.B.U.	Cruisers 60 and over
H	10:30	15 Mi.	I.P.B.U.	Express cruisers
J	10:45	20 Mi.	Scratch	625 Restricted class

POWER BOAT RACING RULES

1. Entries for all Power Boat Races must be filed before July 14, 1924, 6:00 P. M.
2. All boats to be measured by the measurer of their home club or of I. P. B. U.
3. Certificates of measurement must be filed with entry, and the Regatta Committee reserves the right to remeasure.
4. Races for each class shall consist of three heats: the first heat will be run under 1921 I. P. B. U. racing rules; the second and third heat will be a handicap race with limit boat starting first.
5. All boats in a class in first heat will start at the same time and handicaps allowed by allowing time in the corrected time.
6. The boat making the most points in the three scheduled races for the class shall be declared the winner. Points to be awarded. One point for starting and one point for every boat defeated, it being assumed for the purpose of this computation that the number of starters are same in each heat.
7. The starting time for each boat in the second and third heat will be posted on Bulletin Board two hours before start of race.
8. In case of tie for points, the race shall be awarded to the boat which has covered the course in the best total corrected time for the two heats.

H. D. EDWARDS & CO.

ESTABLISHED 1855

175 E. LARNED STREET, DETROIT

Phone MAin 1001

MOTOR BOAT and YACHT SUPPLIES

POWER BOAT PRIZES

Classes	1st Prize	2nd Prize	3rd Prize
A	J. J. Trudell Trophy-----	Mdse.	Mdse.
B	Detroit News Trophy-----	Mdse.	Mdse.
E	Com. Chas. F. Clippert Trophy----	Mdse.	Mdse.
F	Chas. E. Sorenson Trophy-----	Mdse.	Mdse.
G	Com. Geo. H. Ketcham Trophy	Mdse.	Mdse.
H	Com. Wm. L. Urschel Trophy----	Mdse.	Mdse.
J	Detroit Free Press Trophy-----	Mdse.	Mdse.
K	Com. Sidney Frohman Trophy--	Mdse.	Mdse.

"BUFFALO"

Marine Motors
Row Boat Motors

"COLUMBIAN"

Bronze Propellers
Reverse Gears

Henry H. Smith & Co.

Motor Boat Supplies

EVERYTHING FOR BOATS

334 JEFFERSON AVE., EAST,

DETROIT

Insure Thru Specialists

Protection against Fire and
Marine Perils arranged on
YACHTS and MOTOR BOATS

CREED & STUART, INC.

Empire Building,

DETROIT

Successor to Creed & Co.

Does Your Boat Leak ?

Write Us About All Your Leak Troubles

And we will tell you how Jeffery's Waterproof Marine Glues will fix them up.

Any old boat as long as the frames are in fair condition can be made leakproof with

Jeffery's WATERPROOF MARINE GLUE

No. 7 Soft Quality

SEND FOR BOOKLETS

"Marine Glue—What to Use
and How to Use It."

"How to Make Your Boat
Leakproof."

L. W. Ferdinand & Co.

152 Kneeland Street

Boston,

Mass.

Entertainment Program

Yachtsmen and ladies are requested to register at Headquarters on arrival.

Those desiring to view Sail Yacht races from yachts are urged to inquire at Headquarters and they will be placed aboard private yachts if possible. Yacht owners are asked to leave word at Headquarters of their desire to co-operate to entertain visitors in this manner.

Monday, July 14th.

2:00-4:00 p. m. Open House for Yachtsmen aboard Flagship "Mamie O."

6:30 p. m. Yachtsmen's Dinner, Hotel Crescent. Yachtsmen and ladies invited. \$2.00 per person. Number limited to 150.

Tuesday, July 15th

2:00-4:00 p. m. Ladies' Reception aboard Flagship.

8:30 p. m. Commodore's Reception aboard Steamer "Chippewa". Dancing.

Wednesday, July 16th

2:00 p. m. Ladies' Lawn Party, Bay View Hotel, in charge of Mrs. George Jerome.

8:30 p. m. Assemble opposite Town Hall for parade.

9:00 p. m. Grand carnival and Mardi Gras parade.

Thursday, July 17th

2:00 p. m. Squadron Sail. Yachtsmen and ladies not having yachts at the Bay are invited to ride aboard yachts participating. Apply at Headquarters and be on board before 2:00 p. m.

9:00 p. m. Yachtsmen's Ball, Colonial Pavilion. Tickets \$1.50 per couple. Extra ladies with escort, free. Dancing until 1:00 a. m.

Friday, July 18th

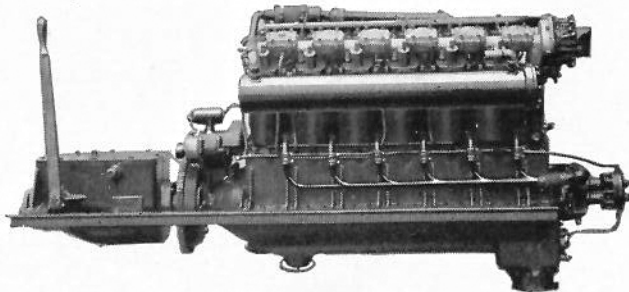
8:00 p. m. Prize distribution, Hotel Crescent Pavilion.

See further entertainment events in Other Sports Program.

Gar Wood Liberty Marine Engine

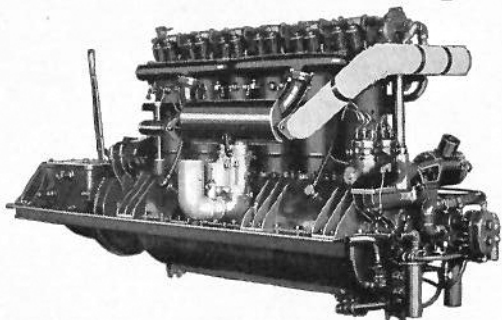
AMERICA'S MOST FAMOUS POWER PLANT FOR
CRUISERS, RUNABOUTS AND SPEEDBOATS

Gar Wood pioneered the light weight power engine for cruisers, runabouts and hydroplanes with such success that the Gar Wood Liberty Marine is recognized throughout the boating world as the sturdy, efficient, dependable and easily handled marine engine.



450 H. P. at 1850 R. P. M.

Detroit Marine-Aero Engine



FIAT Type—300 H. P.

Progressive yachtsmen are demanding this new type of marine engine, giving greater flexibility, less vibration and higher speed without excessive engine speed.

The marvelous achievement of this power plant, not only in speed boats, but also in cruisers as large as 75 feet, stamp it as the best alike for new boats and to better the performance of craft now in service.

Write for Literature and Prices

**Detroit Marine-Aero Engine Co.
Gar Wood, Inc.**

Phone ARLington 1920

409 Connecticut Avenue

DETROIT, MICHIGAN

OTHER SPORTS EVENTS

Monday.

10:00 a. m. Base Ball Games.

3:30 p. m. Shore Games.

1. Hobble Race (Women).
2. Sack Race (Men).
3. Spoon and Bean Race (Women).
4. Cracker Eating Contest (Men).
5. Flapper and Chicken Race (Women).
6. Tug of War (Men).

Thursday.

12:30 p. m. Inter-Lake Swimming Championships. Sanctioned by Allegheny Mountain Association of A. A. U. Open to all registered A. A. U. Athletes.

Men

100-Yd. Free Style

200-Yd. Free Style

150-Yd. Backstroke

Fancy Diving 10-ft. board

Women

50-Yd. Free Style

100-Yd. Free Style

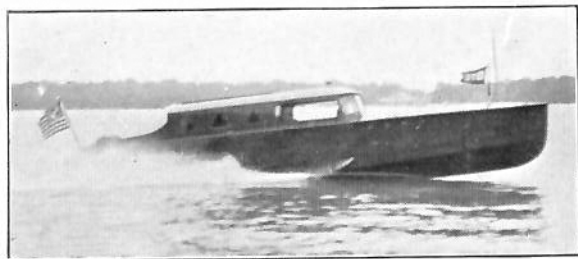
100-Yd. Backstroke

Fancy Diving 10-ft. board

4:00 p. m. Ladies' Cat Boat Race

Commodores' Cat Boat Race

Do not forget to register



SAILORS!

We manufacture boats of all types up to sixty-five feet long from our own plans or to your design and specifications.

See our Sail Boats, Cabin Power Cruisers, fast Runabouts and Out-board Motor Boats. They are winners.

See our original construction. It will impress you for strength and durability.

"The Repeat Order Shop"

**Get our Circular
and Prices First**

Ferndale Boat Works

T. W. HUCKLE, Mgr.

WOODWARD AVE. and 8 MILE ROAD

Ferndale, Mich.

(Suburb of Detroit)

NOTES

Yachtsmen—Do not forget to register.

Ladies—Do not forget to register and be sure and attend the Lawn Party Wednesday afternoon at the Bay View Hotel and the afternoon tea on board the Flagship, Tuesday, July 15th, 2.00 to 4:00 p. m.

Remember the cruise to Port Clinton Saturday. All registered yachtsmen and ladies invited as guests of the Port Clinton Yacht Club.

See the races from Perry's Memorial Monument. A fine view of both the Sail Yacht and Power Boat courses.

The U. S. S. MORRILL will patrol the course during the races. The commissioned officers of the vessel are: Lieutenant Commander H. H. Wolf, Lieutenant Commander S. M. Rock and Lieutenant R. B. Hall.

Remember, this is your Regatta. You will enjoy it the more after making your contribution to the Yachtsmen's Fund. See Com. Harry Austin who will take your subscription.

The speaker at the Yachtsmen's Banquet Monday evening will be Alex I. McLeod, ex-commadore I. L. Y. A. Com. A. A. Schantz will act as toastmaster.

WEDNESDAY—Mardi Gras Day. All clubs will join in the Mardi Gras parade in the evening. Everyone expected to join in the fun and frolic. Elegant prizes will be awarded for best costumes.

Remember the Port Clinton Cruise Saturday.

A number of prizes were received too late to list the donors' names. The Regatta Committee wishes to thank all these donors, however, and to let them know that it appreciates their gifts greatly.

Announcement

The September number of The Main Sheet will be used as the Official Program of the Gold Cup Regatta, August 29, 30, 31 and September 1. Fifteen thousand extra copies will be sold at this time. Space reservations accepted now.

SPECIAL RATES

One Page	-	\$150
One Half Page	-	\$85
One Quarter Page		\$50
One Eighth Page		\$30

Forms Close August 10th.

The Main Sheet

HOTEL ADDISON
DETROIT, MICHIGAN, U. S. A.

PUT-IN-BAY SECTION

CALL ON T. B. AT THE
CRESCENT HOTEL

Featuring Meals and a Good
Home away from Home

SERVICE AT ALL HOURS



VIEW OF PUT-IN-BAY

ST. PAUL'S CHURCH
PUT-IN-BAY, OHIO

Rev. H. P. J. Selinger, Ph. D. Rector

SPECIAL SERVICE

For Yachtmen and their Guests on
Sunday, July 13th, 1924 at 8 P. M.

MILLER'S BOAT LIVERY

Launches—Rowboats

Special Attention to Bass Fishing Parties

Retail Ice

We Will Take You Anywhere—Anytime

PHONE 42-W

Put-in-Bay

Put-in-Bay Island is situated well out in Lake Erie, a sufficient distance from mainland to insure cool, fresh air at all times.

It is large enough to warrant each one the pleasure he seeks without interference with or from others, thus enabling one to enjoy, without restraint, the fullest individual freedom.

The walks and drives, shady dells, rock formations, caves, bathing beach, dancing, bowling, boating, fishing, automobiling, fish hatcheries, light house, vineyards and green forests present an ever changing panorama which delights the eye, invigorates the body and brings the blush of youth to the pale cheek of the fagged-out city dweller.

Arbor Inn Cafe

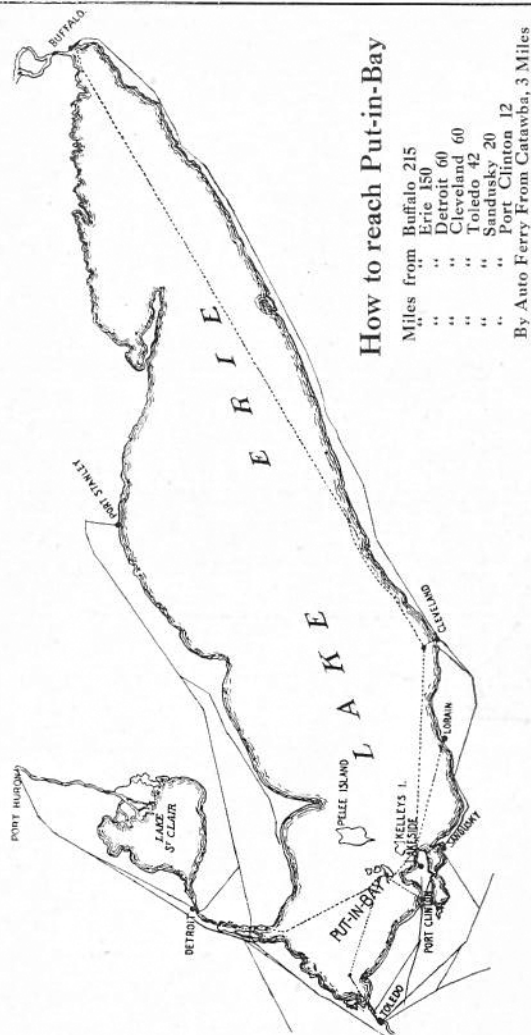
Eat

Anything You Want

Any Time You Want

HOTEL PERRY

PUT-IN-BAY . . . OHIO



How to reach Put-in-Bay

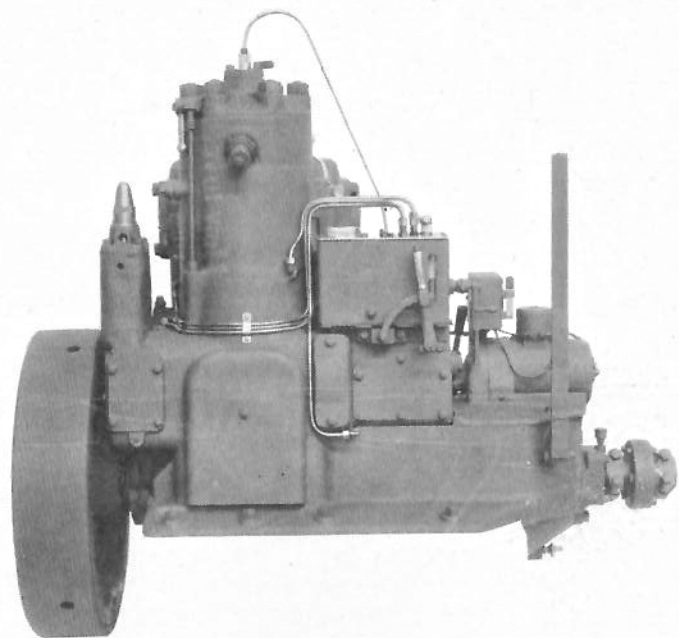
Miles from	Buffalo	215
"	Erie	150
"	Detroit	60
"	Cleveland	60
"	Toledo	42
"	Sandusky	20
"	Fort Clinton	12
By Auto Ferry From Catawba,		3 Miles

BAY VIEW HOUSE

Fishing—Boating—Bathing—Dancing
CHICKEN and FISH DINNERS

Adjacent to the Yacht Club

J. J. DAY, Proprietor



"CO" Features

1. Two cycle—Medium compression—Solid Injection—Semi Diesel Type.
2. Starts and runs on low grade crude oils.
3. All moving parts enclosed and positively lubricated.
4. Compressed air starting—30 sec.
5. Speed range 200—650 R. P. M.
6. Mechanical force feed lubricator.
7. Built in clutch and reverse gear.
8. Sizes 1—2—3 and 4 cylinders, 7½—15—22½—30 H. P. respectively

Oil Engines!

in Sizes 7 1-2—30 H. P.

Fairbanks Morse & Company announce an addition to their Type "CO" Oil engine line in this latest achievement in marine engineering.

These engines bring oil engine simplicity and economy to the smallest power requirements, and give that un-failing source of power that has made oil engines universally popular for marine work.

Crude oil is used both for starting and running. The engine operates on the two stroke cycle and has no valves, electric ignition, carburetors, etc. All moving parts are enclosed. Starting is accomplished by compressed air.

Fairbanks-Morse "CO" Engines have established unbeatable records in every branch of marine work. Thousands of boats have found new standards of dependability and economy through their use.

With a "CO" Engine in your yacht you will have greater flexibility, greater cruising range, increased power, decreased attendance, reduction in repairs and a saving in fuel that quickly pays for the installation.

"24" hour service will be available to you at any port as a "CO" owner through the world wide Fairbanks-Morse Service organization.

FAIRBANKS-MORSE

Manufacturers — Chicago

The Rittman Market

'Good Things to Eat'

PUT-IN-BAY, OHIO

Perry Memorial

The Perry Memorial, a monument built by moneys contributed by the States of Ohio, Pennsylvania, Michigan, Illinois, Wisconsin, New York, Rhode Island, Kentucky, Minnesota, Louisiana, the United States Government and Canada. It is an international shaft, 365 feet high, built in commemoration of 100 years of peace between Great Britain and United States. It is the offering of the American and British people to the memory of Oliver Hazard Perry, who so gallantly, with his forest-hewn war vessels, defeated an English fleet, commanded by the intrepid Englishman, Admiral Barklay, in 1813.

A modern electric elevator, which runs at a speed of 250 feet per minute and is equipped with safety devices, so that there is absolutely no danger of its fall-

H. A. HERBESTER

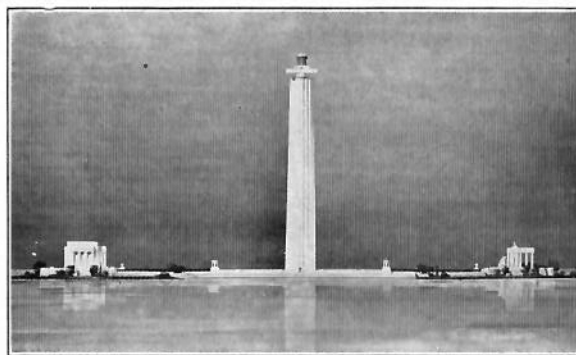
**Souvenirs, Novelties
and Postcards**

*Fine Lots for Sale in the New
Lake View Allotment*

EAST POINT, : : : SOUTH SHORE

When You Put In At The Bay Go to
SCHNOOR & FUCHS

For your general merchandise, groceries, meats, fruit and vegetables in season. Fresh milk and cream. Tennis shoes, hardware and boat supplies.



FERRY MEMORIAL

ing, carries you to the top. Strong field glasses are provided. On a clear day one can see far into Canada, and to the mouth of the Detroit River. A view from this monument is one ever to be remembered.

THE COLONIAL

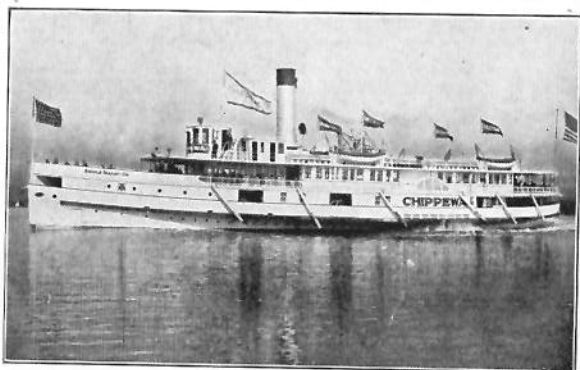
Dancing—Bowling

LUNCHES AND REFRESHMENTS

Conlen Cottage

Special Meals
to Yachtsmen

OUR HOME SHIP



Str. "CHIPPEWA"

The Commodore's reception will be held on Tuesday evening July 15th, at 8:30 aboard the Steamer "Chippewa."

McCANN'S BARBER SHOP

"SERVICE OUR MOTTO"

Laundry and Dry Cleaning

The Yachtsmen all know "Mac"

50 ROOMS AT Smith's Cottage

Chicken Dinners our Specialty
Seating capacity 125

B. L. SMITH - Prop'r.

Equipment Required by U. S. Gov't.

CLASS I—BOATS UNDER 26 FEET, L. O. A.
Sound Apparatus

Whistle capable of producing blast prolonged for at least 2 seconds.

Lights

Combination red and green lantern (or bow and colored side lights) and stern light.

CLASS II—BOATS 26-40 FEET, L. O. A.

Sound Apparatus.

Same as Class I plus fog horn and bell.

Lights

White forward light (lens at least 19 square inches); white stern light; green starboard light; red port (lens at least 16 square inches) screens at least 18 inches long; lenses, fresnel or fluted glass.

CLASS III—BOATS 40-65 FEET, L. O. A.

Sound Apparatus

Same as Class II, except bell must be at least 8 inches across mouth.

Lights

White forward light with lens at least 31 square

When in Put-in Bay Visit

Taliaferro's Barber Shop

Ladies' Shampooing, Massaging
Marcel Waves, and Curling

Semi and Shingle Bob Hair Cut-
ting a Specialty

SAILORS AHOY!

Put-in-Bay Bottling Works

Service SOFT DRINKS Quality

N. H. LADD, Prop. Phone 25W

inches; white stern light, green starboard light, red port light, lens at least 25 square inches; screens at least 24 inches long; lenses, fresnel or fluted glass.

ALL CLASSES

One life preserver for each person on board. Life preservers, life belts, buoyant cushions, ring buoys, or similar devices in sufficient number for every person on board, and placed so as to be readily accessible. Life preservers or buoyant cushions must be capable of keeping afloat for twenty-four hours a weight exerting a direct downward pull of 20 pounds, on boats not carrying passengers for hire. No pneumatic life-saving appliances, or appliances filled with granulated cork will be permitted. Planks, gratings, etc., or small boats in tow cannot be substituted for required life-saving appliances. Floats of seasoned wood, not exceeding white pine in weight and measuring at least 4 feet by 14 inches by 2 inches, may be used.

A fire extinguisher capable of extinguishing gasoline fires.

At anchor, a white light only, less than 20 feet above hull, visible around horizon for at least one mile.

Two copies of the Pilot Rules must be carried on board.

SHORE INN

Meals of Distinction

Fish and Chicken Dinners our Specialty

A. D. SCOTT, Prop'r

Put-in-Bay,

Ohio

Deisler Bathing Beach

THE ONLY BATHING BEACH
ON THE ISLAND

Free Toboggan and Rubber Chute
Best Diving Planks

J. M. Deisler, Prop.

Engineers' Signals

The following are universally used on salt water:

One bell (when engines are at rest), ahead slow.

Jingle bell (when going ahead slow), full speed ahead.

One bell (when under full speed ahead), slow down.

One bell (if going ahead slow), stop.

Two bells (when engines are at rest), astern slow.

Jingle bells (when going astern slow), full speed astern.

One bell (when going astern either at full or half speed), stop.

Four quick bells (when going ahead full speed), astern full speed.

The following signals are in use on the Great Lakes:

Four bells, strong.

One bell, go ahead.

Four bells, all right.

One bell, stop.

Three bells, check.

Two bells, back.

Two bells (when engine is working ahead) stop and back strong.

A whistle may be substituted for a bell on the Great Lakes.

SAILORS ATTENTION

Your ICE CREAM, SODA,
CANDY and SMOKES
await you at

Smith's Ice Cream Parlor

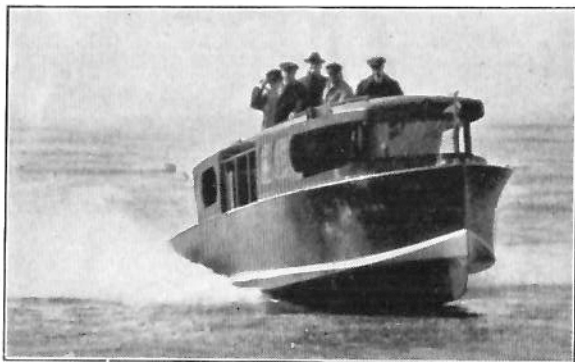
PUT-IN-BAY, OHIO

REGATTAITES! You can obtain Canvas Footwear, Middy Hats, Blouses and Duck Trousers, also Drugs and Toilet Articles at

E. OELSCHLAGER STORE

GENERAL MERCHANDISER

Put-In-Bay Phone 18 Ohio



DESPATCH BOAT UNIQUE

Owned by Commodore C. B. Lockwood, S. Y. C.

O. G. HERBSTER

PHOTOGRAPHER

Speed Pictures a Feature
Photo Post Cards and Views
Developing and Printing
Kodaks and Films

Opposite Park Fountain

PUT-IN-BAY

OHIO

ROUND HOUSE CAFE

Fried Spring Chicken

The Original Hot Hamburger

Put-In-Bay : : : : Ohio

TABLE OF EQUIVALENTS OF NAUTICAL AND STATUTE MILES

The Admiralty Knot—6,080 Feet. 1 Statute Mile—5,280 Feet

Knots	Miles	Knots	Miles	Knots	Miles	Knots	Miles	Knots	Miles
1.00	1.152	5.75	6.621	10.50	12.091	15.25	17.561	20.00	23.030
1.25	1.439	6.00	6.909	10.75	12.379	15.50	17.848	20.25	23.318
1.50	1.727	6.25	7.197	11.00	12.667	15.75	18.136	20.50	23.606
1.75	2.015	6.50	7.485	11.25	12.955	16.00	18.424	20.75	23.894
2.00	2.303	6.75	7.773	11.50	13.242	16.25	18.712	21.00	24.182
2.25	2.591	7.00	8.061	11.75	13.530	16.50	19.000	21.25	24.470
2.50	2.879	7.25	8.349	12.00	13.818	16.75	19.288	21.50	24.758
2.75	3.167	7.50	8.636	12.25	14.106	17.00	19.576	21.75	25.045
3.00	3.455	7.75	8.924	12.50	14.394	17.25	19.864	22.00	25.331
3.25	3.742	8.00	9.212	12.75	14.682	17.50	20.152	22.25	25.562
3.50	4.030	8.25	9.500	13.00	14.970	17.75	20.439	22.50	25.909
3.75	4.318	8.50	9.788	13.25	15.258	18.00	20.727	22.75	26.197
4.00	4.606	8.75	10.076	13.50	15.545	18.25	20.015	23.00	26.485
4.25	4.894	9.00	10.364	13.75	15.833	18.50	21.303	23.50	27.061
4.50	5.182	9.25	10.652	14.00	16.121	18.75	21.591	24.00	27.636
4.75	5.470	9.50	10.939	14.25	16.409	19.00	21.879	24.50	28.212
5.00	5.758	9.75	11.227	14.50	16.697	19.25	22.167	25.00	28.788
5.25	6.045	10.00	11.515	14.75	16.985	19.50	22.455		
5.50	6.333	10.25	11.803	15.00	17.273	19.75	22.742		

V. DOLLER

Dealer In

General Merchandise

A Full and Complete Line of Supplies Always on Hand

Gasoline Filling Station at Doller's Wharf

PUT-IN-BAY

Phone 15

OHIO

**W. KIINZLER
GARAGE and MECHANIC**

Storage Batteries, Recharge Batteries
Pipe Fittings, Auto and Boat Repairs
and Gas Machines

High Test Gasoline and Mobile Oils

PUT-IN-BAY, OHIO



NICK NACK, Com. Humphrey Birge, B. L. C.

CENTRAL HOTEL

S. J. Campbell, Prop.

American and European Plan
Dining Room in Connection

Near Boat Landing. Facing the Park

PUT-IN-BAY, OHIO

OTIS ZIGLER

*Shooting Gallery and
Fishing Parties*

PUT-IN-BAY : : : : OHIO

KERMATH

"A KERMATH ALWAYS RUNS"

The popularity of motor boating is growing by leaps and bounds. For motor boating is the cleanest, snappiest, most exhilarating sport in the world.

Pick the finest boats you can find and invariably they are equipped with the well known Kermath marine motor. This motor is famous wherever boats are used. You will find it at all watering places throughout the civilized world. Used as a standard equipment by 80% of the big boat builders. For large or small boats.

Send for attractive literature and list of low prices.
3 H. P. to 50 H. P.

Kermath Manufacturing Company

5388 Commonwealth Ave.

DETROIT, MICH.

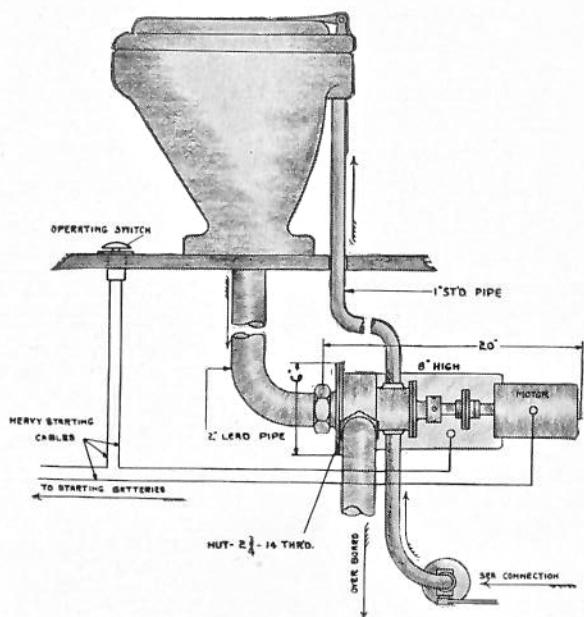
The Yachtsmen Will Appreciate Knowing

THE PARK HOTEL

Is Still Operating Its Splendid

Dining Service

MAKE RESERVATIONS EARLY
LUCAS MEYERS, Prop.



Electric Flushing Toilet

(Consolidated Shipbuilding
Corporation's Patent)

NO PUMPING LEVER
Operated by Push Button

This Electric Flusher may be used with any standard plumbing fixture on any motor boat equipped with a six-volt storage battery.

Explanatory Pamphlet on Request

**Consolidated Shipbuilding
Corp.**

Morris Heights,

New York City

Yacht Routine

Adopted by the Leading Yacht Clubs of the United States

Colors, Etc. In making colors, salutes, etc., the yacht always represents the rank of the owner, whether he is aboard or not.

Yachts in commission should hoist their colors at 8 o'clock A. M., and haul them down at sunset, taking time from the senior officer present.

Before colors in the morning and after colors at sunset, the ensign and distinguishing flags should be shown when entering port, and should be hauled down immediately on coming to anchor.

At all other times yachts should fly a night pennant at the main, from colors at sunset until colors the next morning.

No guns should be fired for colors except by the yacht getting the time, nor from colors at sunset until colors the next morning, nor on Sunday.

We Specialize in
Loving Cups
and other
Trophies

Particularly for Yachting

The W. F. Broer Co.
JEWELERS

Adams and Superior Sts.

TOLEDO,

OHIO

Absence flags and meal pennants are not considered colors.

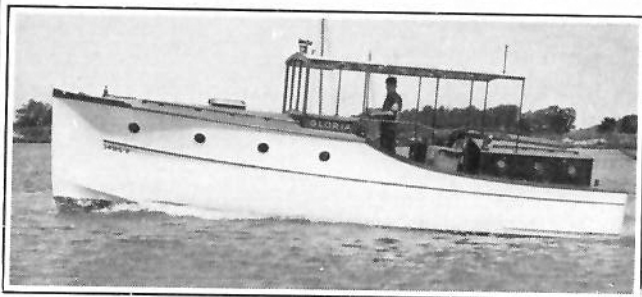
On Decoration Day and occasions of national mourning the ensign only should be half-masted. On the death of the owner of the yacht, both the Club flag and his private signal should be half-masted, but not the ensign. When mourning is ordered for the death of a member of the Club, the Club flag only should be half-masted. This rule should apply to yachts both at anchor and under way.

Flags should always be mastheaded before half-masting them, and should be mastheaded before hauling them down. Saluting with the ensign at half-mast should be done by mastheading first.

Officer in Command of Anchorage. The senior officer present should be in command of the anchorage, should give the time for colors, make and return salutes, visits, etc.

His yacht should remain the station vessel until a senior to him in rank arrives and assumes the command of the anchorage.

The HARRISON "32" IS A REAL DOUBLE CABIN CRUISER



Rich Mahogany Cabinet Work; Roomy Cabins, sleep six persons; six feet Headroom in Forward Cabin; Large convenient Galley; plenty of Locker space; comfortable Bridge Deck; wonderfully Staunch and Seaworthy. A demonstration will prove their superiority.

R. W. HARRISON BOAT WORKS

Established 1897 Office: 3828 Summit TOLEDO, OHIO

Pennants, Private Signals, Etc. Flag officers should always fly their pennants while in commission.

Yachts, when the owner is not on board, should fly at the main starboard spreader, during daytime, a blue flag rectangular in shape. This flag should never be flown when under way.

Single-masted vessels should fly the private signal of the owner when entering a home port, or when approaching other yachts at sea; at other times the Club flag, except when with the squadron.

Meal Pennants. A white flag, rectangular in shape, should be flown at the main starboard spreader on schooners, and at the starboard spreader on single-masted vessels, during the meal hours of the owner.

A red pennant pointed in shape should be flown at the foreport spreader on schooners, and at the port spreader on single-masted vessels during the meal hours of the crew. A white light should be displayed on starboard spreader after sunset and during the owner's meal hours.

Lights. COMMODORE. From colors at sunset until



40 foot Express Cruiser built by the Sandusky
Boat and Cabinet Works

Builders of Fast Boats up to 75 Feet Long

We feature our Famous 18 ft. Mahogany Runabout with 25 h. p. making over 20 M. P. H. Write for prices, they are winners too.

Sandusky Boat & Cabinet Wks.
Sandusky, Ohio

sunrise the Commodore should show, when on board, two blue lights, perpendicularly, at the stern; when absent, one blue light should be shown.

VICE-COMMODORE. The Vice-Commodore should show lights as provided for the Commodore, substituting red lights instead of blue.

CAPTAINS. Captains, when on board, should show a white light under the main boom; when absent this light should be extinguished.

Salutes. All salutes should be returned in kind.

The following rules should not apply to yachts leaving for, or returning from a day's sail.

Yachts should salute vessels of the United States Navy by dipping the ensign once.

The Commodore, on entering port to join the squadron, should be saluted, on coming to anchor, by the yachts present.

On all other occasions the Commodore should be saluted, on coming to anchor, by the officer in command.

Junior flag officers should be saluted, on coming to

anchor, by the officer in command, unless the latter be a senior in rank, in which case they should salute him.

Captains should on all occasions salute the officer in command.

The salute from yachts entering port should be made by dipping the ensign once, or by firing a gun on letting go anchor.

The senior officer, when leaving the anchorage, excepting temporarily, should indicate the transfer of command to the next in rank by firing a gun on getting under way. All other yachts should salute the officer in command.

All visits should be made according to rank.

Yachts, passing one another, should always exchange salutes by dipping the ensign once, juniors saluting first. Steam whistles should never be used to make salutes.

The salute to yachts entering port, entitled to a salute, should be made by dipping the ensign once, or by firing a gun, when they let go anchor.

An official salute to a foreign club should be made

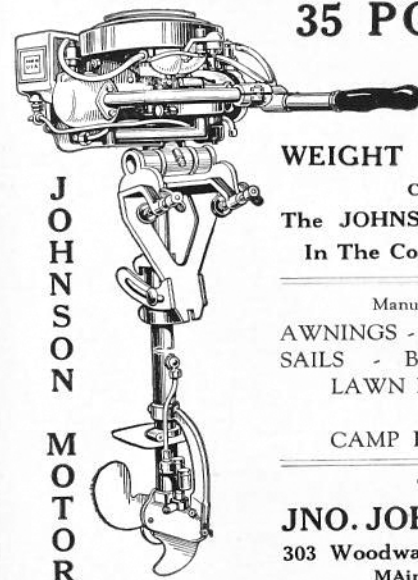
Compliments of

Jerry McCarthy

**FORD and LINCOLN
DEALER**

DIX AVENUE AT VINEWOOD

DETROIT, MICH.



35 POUNDS

IF?

**WEIGHT and POWER
COUNT**

**The JOHNSON should win
In The Coming Regattas**

Manufacturers of
AWNINGS - TENTS - FLAGS
SAILS - BOAT CUSHIONS
LAWN FURNITURE
and
CAMP EQUIPMENT

**THE
JNO. JOHNSON CO.**
303 Woodward Ave., Detroit
MAin 3105-7866

by firing a gun, with the flag of the foreign club at the fore on schooners and steamers, and at the main on single-masted vessels; or, in the absence of such flag, by half-masting the Club flag and firing a gun. When the salute has been returned, or a reasonable time for its return allowed, the flag should be hauled down, and the Club flag hoisted again.

The salute from or to yachts arriving after sunset, or on Sunday, should be made immediately after colors on the following morning.

When a flag officer makes an official visit, a gun should be fired, with his pennant at the fore on schooners and steamers, and at the main on single-masted vessels, while he remains on board.

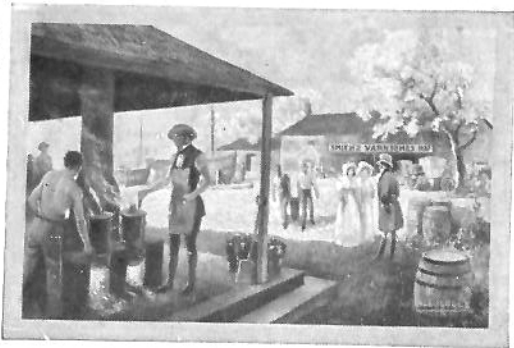
A yacht, acting as judges' boat, should not be saluted during a race.

The quarter-deck should always be saluted by lifting the cap on coming on board or from below.

With the Squadron. Yachts should report to the commanding officer on joining the squadron, and should obtain his permission before leaving it.

THE FIRST VARNISH FACTORY IN AMERICA

CUP DEFENDER



VARNISHES

AQUATITE—the hard fossil gum spar;
I. X. L. FLOOR FINISH, for protected decks.

Smith's Yacht White; Marine White Enamel; Smith's Yacht Deck Buff;
Yacht Black Gloss; Smith's Yacht Bottom Green; Canoe Enamels;
Smith's Frictionless Racing Bottom Finish

EDWARD SMITH & CO.

123 West Avenue Long Island City, N. Y.
The First Varnish Factory in America

When under way with the squadron, firing guns and signaling should be avoided, except when joining or parting company, or when repeating signals.

PASSING AT SEA. When squadrons of different clubs meet at sea, salutes should be exchanged only by the commanding officers.

Salutes from single yachts at sea should only be answered by the flag-ship.

Single-masted vessels should fly the private signal of the owner when under way with the squadron; when at anchor, the Club flag.

When a foreign yacht arrives, the senior officer present should send on board, without regard to rank, a tender of the civilities of the Club.

Entering a Foreign Port. Yachts should salute on entering port in the home waters of a foreign club, where any of its fleet are lying. After the tender of civilities has been made, owners of the entering yachts should visit the officer in command of the anchorage. All other visits should be made according to rank,—visits to their equals in rank being made by the owners of the entering yachts.

The time for colors in the home waters of a foreign club should be given with its senior flag officer present.

The term "foreign" should be understood as applying to all other clubs outside of the waters in which a club is stationed.

Boat Service. The order of entering and leaving boats is, juniors enter first and leave last.

Flag officers and the Fleet-Captain should fly their pennants and Captains their private signals, when in



BERRY SPAR

The Finish for Boats

Withstands wind,
wave and weather

BERRY BROTHERS
Varnishes Enamels Stains

Detroit, Mich. Walkerville, Ont.

their boats; members, the Club flag. After sunset a white light should be shown at the bow.

Passing one another, juniors should salute seniors by raising the cap.

Every boat approaching a yacht at night should be hailed.

The answer of the Commodore, when intending to board, should be "Commodore"; for Junior flag officers, and fleet-captains, "Flag"; for captains and members, "Ay, ay"; for captains returning on board, the name of their yacht; for visitors, "Visitors"; for sailing-masters, etc., "No, no"; using the port side; for passing boats, "Passing".

Kainer Running Lights

Built for Service; Correct in Design

The bodies are cast brass, glass held in place by springs to prevent breaking and rattling; screw top makes bulb and wiring easily accessible without removing light from deck.

Send for Catalogue of our complete list of marine specialties.

KAINER & COMPANY

Chicago, Ill.

761-3 Mather St.



Elto

50 Per Cent More Power

Less than 17 lbs. per H. P.

FASTEST

"Outboard" in the World

"Starts with a touch"

SAFE

rudder steering. Propello-Pump

Elto Outboard Motor Co.

Milwaukee, Dept. Y Wisconsin

(Designed by Ole Evinrude)

Flags and How Flown

Though there are no hard and fast rules regarding shapes and colors of yachts bunting, the following is generally accepted by the prominent Clubs in the United States and in foreign countries.

Yachts carry the ensign of the country to which they belong. The ensign should be flown as follows:—

AT MAIN PEAK by Cat-rigged Yachts, Sloop-rigged Yachts and Cutter-rigged Yachts.

AT MAIN MASTHEAD by Schooner Yachts.

AT STERN FLAGSTAFF by Launches, Gigs and Dinghys.

AT TAFFRAIL FLAGSTAFF by Steam Yachts.

At MIZZEN PEAK, or JIGGER MASTHEAD by Yawl-rigged Yachts.

All Yachts at anchor display the ensign at taffrail flagstaff.

The CLUB BURGEE, which indicates to which club the owner of the Yacht belongs, is flown as follows:—

At MASTHEAD by Cat-rigged Yachts, Sloop-rigged Yachts, and Cutter-rigged Yachts.

At MAIN MASTHEAD by Yawl-rigged Yachts.

When you see this name plate on a boat

BUILT BY
A. G. LIGGETT & SON CO.
WYANDOTTE, MICH.
HULL

Look her over and see if she comes up to the standard of what your boat should be.

LIGGETT builds QUALITY CRAFT
Stock boats in

26 foot Runabouts 28 foot Cruisers
34 foot Cruisers in both single and double
cabins.

At FORE MASTHEAD by Steam Yachts and Schooner-rigged Yachts.

At BOWSTAFF by Launches, Gigs and Dinghys.

The Private Signal, which designates the owner of the Yacht, is flown as follows:

At MASTHEAD or on FORESTAY by Cat-rigged Yachts.

At MIZZEN MASTHEAD or MIZZEN PEAK by Yawl-rigged Yachts.

At MASTHEAD (when cruising in Squadron) by Sloop-rigged Yachts and Cutter-rigged Yachts.

At MAIN MASTHEAD by Steam Yachts and Schooner-rigged Yachts.

At BOWSTAFF by Launches, Gigs and Dinghys.

FLAG OFFICERS' SIGNALS are mostly colored:—Blue for Commodore, Red for Vice-Commodore, and White for Rear-Commodore.

The following flags are not considered as colors:—

NIGHT PENNANT (blue) is hoisted at the main truck from sundown to 8 A. M., also occasionally used as a tell-tale when racing or sailing.

OWNERS' ABSENT FLAG (blue rectangular) is flown from the main starboard spreader when yacht is at anchor only. It denotes owner is not on board, but should never be flown when under way.



Chris-Craft Speed 32 to 35 Miles Per Hour \$ 3200

SMITH QUALITY AND SERVICE

Write for catalog

Chris Smith & Sons Boat Co.

Algonac, Michigan

OWNEK'S MEAL FLAG (white rectangular) is flown from the main starboard spreader and denotes the owner is at meals. Boarding a yacht when this flag is flying is considered bad form.

Meal pennants should not be flown when under way.

CREW MEAL FLAG (red triangular) is flown from the foreport spreader on schooners and main-port spreader on single-masted yachts. This denotes the crew is at meals.

CHURCH PENNANT (white triangular, with blue cross) is the only flag ever displayed above the ensign, and only during divine service, with Yacht at anchor.

WATER FLAG (white rectangular, with word "water" in centre, in black letters) is the signal for water boat. May be displayed from any part of the yacht.

The official day on board of a yacht begins with colors (8 A. M.) and ends with the boom of senior officer's gun, at sunset, when the night pennant should be hoisted.

In making "colors", salutes, etc., the Yacht should always represent the rank of the owner, whether he is on board or not.

In entering or leaving port before "colors" in the

Let Us Quote on Your Design or Ours
in Yacht Construction

QUALITY FIRST

In Either Steel or Wood

HULLS

See Our Boats at the Regattas

DeFoe Boat & Motor Works

Bay City, Mich., U. S. A.

Yacht Brokers - Naval Architects - Marine Insurance - Surveying

Henry C. Grebe & Co., Inc.**6 North Michigan Ave. Chicago**

Telephone Central 1261

We have a complete list of all steam and power yachts, auxiliaries and houseboats, which are for SALE and CHARTER. Plans, photographs and full particulars furnished on request.

morning, or after "colors" at sunset, the ensign and distinguishing flags should be shown, and then hauled down on coming to anchor.

On Decoration Day and occasion of National Mourning, only the ensign should be half-masted. In case of death of the owner of the yacht, the Club flag and his private signal should be half-masted, but not the ensign.

When mourning is ordered for death of a club member, only the club flag should be half-masted.

Flags should be mastheaded, both before half-masting them and before hauling them down. Saluting with the ensign should be done by mastheading it first.

Flag officers should always fly their pennants while in commission.

Single-masted vessels should fly the private signal of the owner when under way, and when at anchor the Club flag.

When Squadrons of different clubs meet at sea, salutes should be exchanged by the commanding officers only.

Salutes from single Yachts at sea should be answered by the Flag Ship only.

Barthel, Flanders & Barthel

PATENT ATTORNEYS and
SOLICITORS

of United States and Foreign Patents
Trademarks and Copyrights

1005-6-7 First Nat'l Bank Bldg. - Detroit, Mich.

STAY-TITE—Stops the Leaks

A paste-like material, requiring no mixing, no heating. Apply with ordinary putty knife. Makes boat leaks impossible. Seals permanently all cracks, seams, joints and checks of hull or deck. Stops leaks in skylights, sets deck plugs. Attaches canvas to wood.

EVINRUDE and JOHNSON OUTBOARD MOTORS

SIXTH CITY SPECIALTY & MFG. CO.

1415 W. 9th Street,

Cleveland, Ohio

Yachts should always salute vessels of the United States Navy by dipping the ensign once.

Yachts passing one another should always exchange salutes by dipping the ensign once only, juniors saluting first. A yacht acting as judge's boat should not be saluted during a race.

A yacht, on withdrawing from any race, should at once lower its racing colors, and allow yachts still competing right of way.

A yellow and black flag borne quarterly will signify that the vessel has contagious disease on board and is to be avoided.

The International Code of Signals enables yachts to communicate with each other.

Flag "B", of the International Code of Signals, is used for a PROTEST FLAG, and is conspicuously displayed in the rigging of a yacht protesting during a race.

A single pennant representing the letter "S" is the signal of distress.

In DRESSING SHIP the International Code may be used to advantage. Care being taken to have burgees, pennants and rectangular flags bent on alternately. Hoist at the peak or staff aft the Yacht ensign, and on the Jack staff hoist the Jack. Also arrange a rainbow

MACHINERY and TOOLS for EVERYBODY

There are over 30,000 kinds and sizes of shop equipment in our large stock including:
Metal-working Machinery, Wood-working Machinery. Tools-many kinds, Shop Supplies, Power Transmission Appliances, Material Conveying Appliances, Electric Motors, Electric Tools and many others.

The CHAS. A. STRELINGER CO.

149 E. Larned Street,

DETROIT

The
GREENWOOD-ATKINSON-ARMSTRONG CO.

Yachting UNIFORMS

We have the new "Inter-Lake" Button for sale

423 Woodward Ave.

DETROIT

of flags, reaching from the water line forward to the water line aft, by way of the jib boom end to foretop masthead, then across to main topmast, and down to main boom end, allowing several flags to touch the water line from both the jib boom end and the main boom end. To keep flags in position, a weight should be attached to the end of each line. Additional strings of flags may be used for display from each top masthead to the deck.

Erico UNIVERSAL SHAFTLOG

100 Per Cent True Alignment

Not only the angle but the point of bearing is readily adjustable. Specified and used by leading designers and builders.

Mfgs. of Erico Electric Bilge Pumps, Electric Running Lights, Searchlights, Erico Spark, Throttle and Clutch Controls, Ventilators, Steering Wheels.

HUBBARD H. ERICKSON CO.
3045 N. Western Ave., Chicago

Power Boat Speed Table

Below we give a speed table for the benefit of judges of regatta committees and owners of high-speed motor boats. We hope it will be found useful and a time-saver in calibrating the speed of boats in competition and private trials.

Miles per Hour	Time per Mile			Miles per Hour	Time per Mile		
	min.	sec.			min.	sec.	
4:00	15	0		16.90	3	33	
5.00	12	0		16.98	3	32	
6.00	10	0		17.06	3	31	
7.00	8	34		17.14	3	30	
8.00	7	30		17.22	3	29	
9.00	6	40		17.31	3	28	
10.00	6	0		17.39	3	27	
11.00	5	27		17.48	3	26	
12.00	5	0		17.56	3	25	
13.00	4	36		17.65	3	24	
14.00	4	17		17.73	3	23	
15.00	4	0		17.82	3	22	
15.06	3	59		17.91	3	21	
15.13	3	58		18.00	3	20	
15.19	3	57		18.09	3	19	
15.25	3	56		18.18	3	18	
15.32	3	55		18.27	3	17	
15.38	3	54		18.37	3	16	
15.45	3	53		18.46	3	15	
15.52	3	52		18.56	3	14	
15.58	3	51		18.65	3	13	
15.65	3	50		18.75	3	12	
15.72	3	49		18.85	3	11	
15.79	3	48		18.95	3	10	
15.86	3	47		19.05	3	9	
15.93	3	46		19.15	3	8	
16.00	3	45		19.25	3	7	
16.07	3	44		19.35	3	6	
16.14	3	43		19.46	3	5	
16.22	3	42		19.57	3	4	
16.29	3	41		19.67	3	3	
16.36	3	40		19.78	3	2	
16.44	3	39		19.89	3	1	
16.51	3	38		20.00	3	0	
16.59	3	37		20.11	2	59	
16.67	3	36		20.22	2	58	
16.74	3	35		20.34	2	57	
16.82	3	34		20.45	2	56	

Miles per Hour	Time per Mile		Miles per Hour	Time per Mile	
20.57	2 min.	55 sec.	28.57	2 min.	6 sec.
20.69	2 "	54 "	28.80	2 "	5 "
20.81	2 "	53 "	29.03	2 "	4 "
20.93	2 "	52 "	29.27	2 "	3 "
21.05	2 "	51 "	29.51	2 "	2 "
21.18	2 "	50 "	29.75	2 "	1 "
21.30	2 "	49 "	30.00	2 "	0 "
21.43	2 "	48 "	30.25	1 "	59 "
21.56	2 "	47 "	30.51	1 "	58 "
21.69	2 "	46 "	30.77	1 "	57 "
21.82	2 "	45 "	31.03	1 "	56 "
21.95	2 "	44 "	31.30	1 "	55 "
22.08	2 "	43 "	31.58	1 "	54 "
22.22	2 "	42 "	31.86	1 "	53 "
22.36	2 "	41 "	32.14	1 "	52 "
22.50	2 "	40 "	32.43	1 "	51 "
22.64	2 "	39 "	32.73	1 "	50 "
22.78	2 "	38 "	33.03	1 "	49 "
22.93	2 "	37 "	33.33	1 "	48 "
23.08	2 "	36 "	33.64	1 "	47 "
23.23	2 "	35 "	33.96	1 "	46 "
23.38	2 "	34 "	34.29	1 "	45 "
23.53	2 "	33 "	34.62	1 "	44 "
23.68	2 "	32 "	34.95	1 "	43 "
23.84	2 "	31 "	35.29	1 "	42 "
24.00	2 "	30 "	35.64	1 "	41 "
24.16	2 "	29 "	36.00	1 "	40 "
24.32	2 "	28 "	36.36	1 "	39 "
24.49	2 "	27 "	36.73	1 "	38 "
24.66	2 "	26 "	37.11	1 "	37 "
24.83	2 "	25 "	37.50	1 "	36 "
25.00	2 "	24 "	37.89	1 "	35 "
25.17	2 "	23 "	38.30	1 "	34 "
25.35	2 "	22 "	38.71	1 "	33 "
25.53	2 "	21 "	39.13	1 "	32 "
25.71	2 "	20 "	39.56	1 "	31 "
25.90	2 "	19 "	40.00	1 "	30 "
26.09	2 "	18 "	40.45	1 "	29 "
26.28	2 "	17 "	40.91	1 "	28 "
26.47	2 "	16 "	41.38	1 "	27 "
26.67	2 "	15 "	41.86	1 "	26 "
26.87	2 "	14 "	42.35	1 "	25 "
27.07	2 "	13 "	42.86	1 "	24 "
27.27	2 "	12 "	43.37	1 "	23 "
27.48	2 "	11 "	43.90	1 "	22 "
27.69	2 "	10 "	44.44	1 "	21 "
27.91	2 "	9 "	45.00	1 "	20 "
28.12	2 "	8 "	45.57	1 "	19 "
28.35	2 "	7 "	46.15	1 "	18 "

Miles per Hour	Time per Mile		Miles per Hour	Time per Mile	
46.75	1 min.	18 sec.	64.28	0 min.	56 sec.
47.37	1 "	16 "	65.45	0 "	55 "
48.00	1 "	15 "	66.66	0 "	54 "
48.65	1 "	14 "	67.92	0 "	53 "
49.31	1 "	13 "	69.22	0 "	52 "
50.00	1 "	12 "	70.58	0 "	51 "
50.70	1 "	11 "	72.00	0 "	50 "
51.43	1 "	10 "	73.46	0 "	49 "
52.17	1 "	9 "	75.00	0 "	48 "
52.94	1 "	8 "	76.59	0 "	47 "
53.73	1 "	7 "	78.25	0 "	46 "
54.55	1 "	6 "	80.01	0 "	45 "
55.38	1 "	5 "	81.81	0 "	44 "
56.25	1 "	4 "	83.71	0 "	43 "
57.14	1 "	3 "	85.71	0 "	42 "
58.06	1 "	2 "	87.79	0 "	41 "
59.02	1 "	1 "	90.00	0 "	40 "
60.00	1 "	0 "	92.30	0 "	39 "
61.01	0 "	59 "	94.73	0 "	38 "
62.06	0 "	58 "	97.29	0 "	37 "
63.15	0 "	57 "	99.99	0 "	36 "

SHIPS BELLS

	1st Watch	Middle Watch	Morning Watch	Forenoon Watch	1st D'g W't'h Afternoon 4 to 6 Watch 2nd D'g W't'h 6 to 8	
1 Bell	8:30 P.M.	12:30 A.M.	4:30 A.M.	8:30 A.M.	12:30 P.M.	4:30 P.M.
2 "	9:00 "	1:00 "	5:00 "	9:00 "	1:00 "	5:00 "
3 "	9:30 "	1:30 "	5:30 "	9:30 "	1:30 "	5:30 "
4 "	10:00 "	2:00 "	6:00 "	10:00 "	2:00 "	6:00 "
5 "	10:30 "	2:30 "	6:30 "	10:30 "	2:30 "	6:30 "
6 "	11:00 "	3:00 "	7:00 "	11:00 "	3:00 "	7:00 "
7 "	11:30 "	3:30 "	7:30 "	11:30 "	3:30 "	7:30 "
8 "	12:00 "	4:00 "	8:00 "	12:00 "	4:00 "	8:00 "

PELKEY

"Non-Skegable Anchor"

Made in Sizes up to 100 pounds at Present

PRICES RIGHT

Dealers Write for Discount

TIMOTHY PELKEY, Mfr.

MARINE CITY, : : : : MICHIGAN

Come to DETROIT

August 29th to Sept. 1st

for the

Eight Annual Gold Cup Regatta

PROGRAM

August 29th		Friday
Sallan Trophy, (a) 28.75 Miles, First Heat		8:30 - 12:05
Trials for Sweepstakes		10:00 - 11:00
Duff-Greening Trophy	{ 30 Miles 30 Miles 30 Miles	1:00 - 2:15
3 Heats		2:45 - 4:00
		4:15 - 5:30
Sallan Trophy, 28.75 Miles, Second Heat	(p.m.)	6:30 - 10:05
August 30th		Saturday
Sallan Trophy, 28.75 Miles, Third Heat		9:30 - 1:05
Trials for Sweepstakes		10:00 - 11:00
Gold Cup	{ 30 Miles 30 Miles 30 Miles	2:00 - 3:00
3 Heats		3:15 - 4:15
		4:30 - 5:30
August 31st		Sunday
Trials for Sweepstakes		10:00 - 2:00
*Runabout Handicap, (15 Miles)		2:00 - 2:30
*Australian Pursuit, (24 Miles)		3:00 - 4:00
Chance Race, (9 Miles)		4:30 - 5:30
September 1st		Monday
Y. A. A. Sweepstakes, (150 Miles)		2:00 - 6:00

See the World's Greatest Regatta, the World's Premier Pilots and the Cream of Racing Craft. For information and entry blanks, write

DETROIT GOLD CUP COMMITTEE, Inc.
J. Lee Barrett, Secretary

613 Lafayette Bldg.

Detroit, Mich. U. S. A.

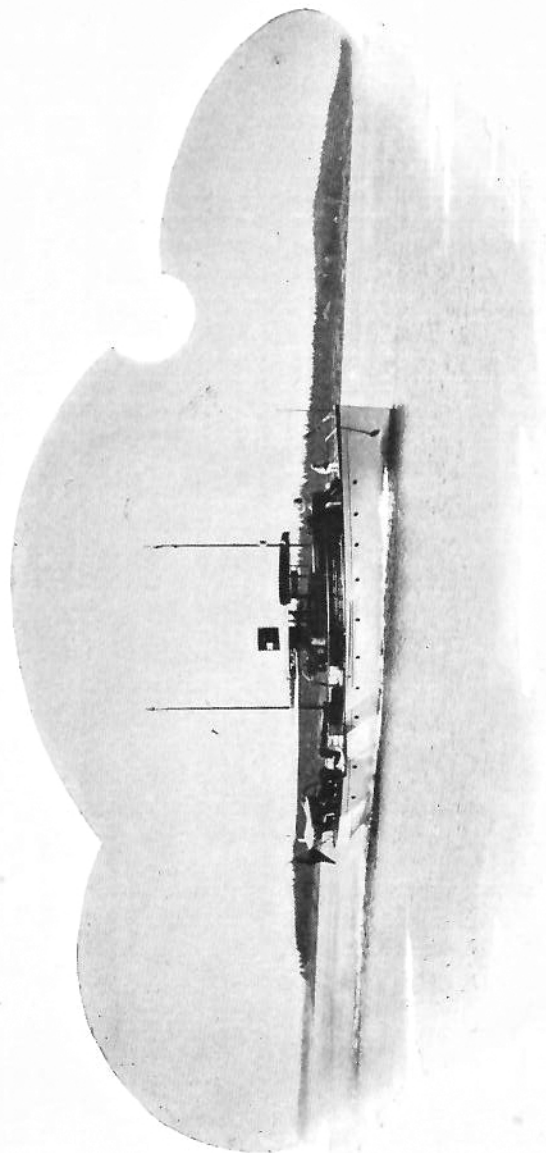
"Its Largest Year Afloat"

65

TABLE OF BOAT SPEED PER MILES PER HOUR—Formula .000917 constant x pitch x revolutions

R.P.M.	Per Cent of Slip	PITCH OF PROPELLER IN INCHES												SPEED LIMIT						
		14"	16"	18"	20"	22"	24"	26"	28"	30"	33"	36"	40"	45"	50"	55"	60"	Miles Per Hour	Minutes Per Mile	Feet Per Second
400	None	5.30	6.06	6.82	7.58	8.33	9.08	9.85	10.61	11.36	12.50	13.63	15.15	17.05	18.94	20.83	22.72	8	7.30	11
	10%	4.77	5.45	6.14	6.82	7.50	8.18	8.87	9.55	10.22	11.25	12.27	13.63	15.34	17.05	18.75	20.44	10	6.	14
	20%	4.24	4.85	5.45	6.06	6.66	7.27	7.88	8.49	9.09	10.00	10.90	12.12	13.64	15.15	16.67	18.18	12	5.	17
	30%	3.71	4.24	4.77	5.30	5.83	6.36	6.89	7.43	7.95	8.75	9.54	10.61	11.93	13.26	14.59	16.01	14	4.14	20
600	None	7.96	9.09	10.23	11.36	12.50	13.64	14.77	15.91	17.05	18.75	20.46	22.73	25.57	28.41	31.20	34.08	16	3.45	23
	10%	7.16	8.18	9.20	10.22	11.25	12.27	13.29	14.32	15.34	16.87	18.41	20.46	23.01	25.57	28.08	30.68	18	3.20	26
	20%	6.37	7.27	8.18	9.09	10.00	10.91	11.82	12.73	13.64	15.01	16.37	18.18	20.46	22.73	24.96	27.28	20	3.	29
	30%	5.57	6.36	7.16	7.95	8.75	9.54	10.34	11.14	11.93	13.13	14.32	15.91	17.90	19.89	21.84	23.87	22	2.43	32
800	None	10.61	12.12	13.64	15.15	16.67	18.18	19.70	21.21	22.73	25.00	27.27	30.30	34.09	37.88	41.66	45.24	24	2.30	35
	10%	9.55	10.91	12.27	13.63	15.00	16.36	17.73	19.09	20.46	22.19	24.54	27.27	30.68	34.09	37.50	40.72	26	2.18	38
	20%	8.49	9.70	10.91	12.12	13.34	14.54	15.76	16.97	18.18	20.01	21.82	24.24	27.27	30.30	33.33	36.20	28	2.08	41
	30%	7.43	8.48	9.54	10.61	11.67	12.73	13.79	14.85	15.91	17.50	19.09	21.21	23.86	26.52	29.17	31.67	30	1.7	44
1000	None	13.26	15.15	17.05	18.94	20.83	22.73	24.62	26.52	28.41	31.25	34.09	37.88	42.62	47.35	52.08	56.82	32	1.5	50
	10%	11.93	13.63	15.34	17.05	18.75	20.46	22.16	23.87	25.57	28.12	30.68	34.09	38.36	42.61	47.88	51.14	34	1.5	50
	20%	10.61	12.12	13.64	15.15	16.66	18.18	19.70	21.22	22.73	25.01	27.27	30.30	34.10	37.88	40.67	45.46	36	1.5	50
	30%	9.28	10.61	11.93	13.26	14.58	15.91	17.23	18.57	19.89	21.88	23.86	26.52	29.83	33.15	36.46	39.78	38	1.2	72.5
1500	None	19.89	22.72	25.58	28.42	31.26	34.10	36.95	39.79	42.63	46.89	51.16	56.82	63.95	71.05	78.16	85.23	40	1.09	79.7
	10%	17.89	20.45	23.00	25.56	28.12	30.67	33.23	35.78	38.34	42.17	46.01	51.12	57.21	63.90	70.29	76.71	42	1.	88
	20%	15.92	18.19	20.47	22.74	25.01	27.29	29.56	31.84	34.11	37.52	40.93	45.48	51.17	56.85	62.54	68.19	44		
	30%	13.93	15.92	17.91	19.90	21.89	23.88	25.87	27.86	29.85	32.84	35.82	39.80	44.78	49.75	54.73	59.67	46		

A Propeller Wheel of any diameter with 30 inches pitch at 800 R. P. M., allowing 10% slip, should make 20.46 miles per hour. See Table. NOTE.—If you want to know the speed at 1200 revolutions, double the 600 column. 500 Revolutions would be one-half the 1000 rev. column.



THE MATTHEWS COMPANY, PORT CLINTON, OHIO

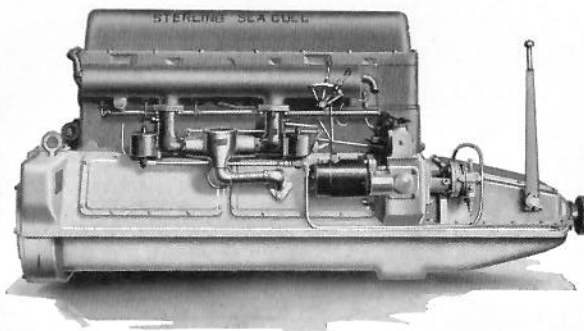
Designers and Builder of Yachts
of Distinction, 38 to 125 feet.

Write for Information on
Stock Cruisers



Sterling Models Include:

- DOLPHIN SPECIAL, 4 and 6 cyl. engines for racing and fast runabouts, 180-290 H. P.
- DOLPHIN, 4, 6, and 8 cyl. engines for faster cruisers and runabouts, 125-300 H. P.
- DOLPHIN MEDIUM, 4, 6, and 8 cyl. engines for medium speed cruisers and fishing boats, 72-220 H. P.
- TRIDENT, 4, 6, and 8 cyl. slow turning engines for heavy cruisers, work boats and auxiliaries, 30-126 H. P.
- VIKING, built only in six cylinders for fast cruisers and heavy boats, 50 to 150 ft. long, 100-300 H. P.
- SEA-GULL, built only in 6 cylinders for runabouts and cruisers, 150 H. P.
- NEPTUNE, 2 cylinder, 4 cycle, 12-15 H. P. for cruisers, auxiliaries, fishing and trolling boats.



STERLING ENGINE CO.
BUFFALO, NEW YORK

Belle Isle-Hacker Boats

The BEARCAT
The Aristocrat of
Power Boats



The DOLPHIN
The All-Purpose
Runabout

America's Best Known Runabout

Coincident with the removal of the government sales tax on motor boats, we offer Belle Isle-Hacker boats at revised prices. Immediate deliveries of both Bearcats and Dolphins can be made. Call or write for complete particulars. Demonstrations gladly arranged.

The Belle Isle-Hacker Boat Sales Company

Distributors of
BELLE ISLE BEARCATS AND
HACKER DOLPHINS

6304 E. Jefferson Ave., Detroit, Mich.

Does Your Business Need a 24-hour Man?

The "24-hour man" of business is printing.

Printing takes care of a thousand details which would otherwise fall upon a salesman.

Printing thus helps your salesmen—whether they are in a retail store or traveling "on the road." It enables your salesmen to perform as they are intended to perform—by bringing in sales.

Without printing, any salesman must waste time in explaining your policy—building confidence—explaining the merits of merchandise—removing obstacles to buying, from the purchaser's mind.

With printing, you can do these things for your salesman.

That's just one advantage of printing. Let us tell you more of them.

Speed Printing
Co.

Catalogs, Booklets, Publications, Mailing
Pieces, House Organs, Factory
Forms, Business Stationery

Phone 101

ALGONAC, MICH.