

MARDI GRAS

TUESDAY EVENING
JULY 14th, 1925

Fun For All

Prizes For The
Best Costumes

Everybody Welcome

GRAND PARADE

Will start at 9:00 P. M.

Assemble at Put-in-Bay Town Hall,
(opposite Post Office) at 8:30 P. M.

GRAND CARNIVAL BALL 10 P. M.
At The Colonial

Entertainment Committee will distribute
noise-makers, flares, novelties, etc., just
before start of parade

COM. A. G. SMITH, _____ Marshal
Com. T. B. ALEXANDER, } Aides to Marshal
JOHN HUNTER, }

INTERLAKE YACHTING ASSOCIATION



July 13·18·1925
32ND ANNUAL REGATTA
PUT-IN-BAY·OHIO

FILE NO. _____ PHOTO DATE _____
 TITLE _____
 PLACE HELEN BROOKS
 COLLECTION YACHTS - COLLECTION

Support Our Sport

Give a little for the lot of fun you have. Help carry the annual regatta expense. Make the Permanent Fund grow.

Gradually the Permanent Fund of the Inter Lake Yachting Association is accumulating—over \$10,000 now—so that the interest from it will make a Yachting Endowment that will insure great regattas in future, rain or shine.

And, every year, the Yachtsmen's Fund has been able to give approximately \$1,000 toward regatta expenses—to make bigger, better events at the Bay. SINCE 1917.

Send your contribution at once to

Yachtsmen's Fund of I. L. Y. A.

1003 Lafayette Building,
 Detroit, Michigan.

Chas. D. Lynch, Secretary-Treasurer.

Board of Trustees

Wm. R. Huntington, President

F. W. Roberts, Vice President

Chas. D. Lynch, Secretary-Treasurer

Dr. A. R. Hackett
 Sidney Frohman

Henry W. Hess

S. O. Richardson, Jr.

F. W. Wakefield

Endowment Fund Trustees

S. O. Richardson, Jr.

Wm. R. Huntington

F. W. Roberts

Associate Governors

Alex I. McLeod, Algonac

E. E. Noble, Cleveland

Harry D. Freeman, Columbus

Charles W. Kotcher, Detroit

R. George Marsh, Detroit

Geo. H. Wood, Monroe

T. D. Alexander, Put-in-Bay

T. A. De Vilbiss, Toledo

C. F. Decker, Vermilion

Greetings to Com. DeVilbiss and Guests!

Heave the Hook and make for Paragon Port!

LAY alongside the Paragon dock — Make it your marine filling station on the Maumee.

You'll find all facilities for prompt attention to your cruising needs!

Afloat or ashore Paragon
 Gasolene, Oils and
 Greases make your going
 smoother

Drop into this safe harbor,
 mates, and tie to

PARAGON
 100%
 Gasolene - Oils - Greases



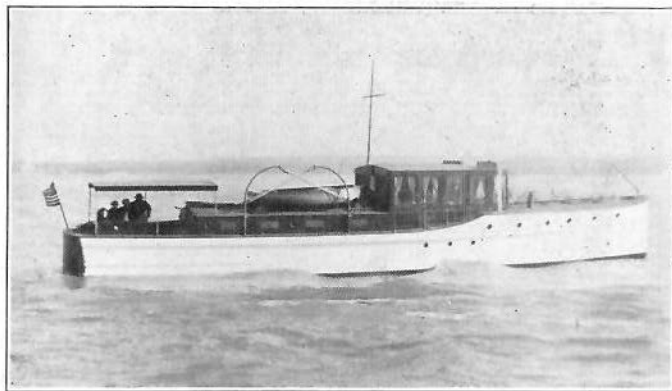
THOS. A. DEVILBISS

Commodore

I. L. Y. A. 1925

THE "PRISCILLA"

It's Commander DeVilbiss' flagship and the oftener you come aboard the better pleased all hands will be.



PRISCILLA

I. L. Y. A. Flagship 1925

OPEN HOUSE ON FLAGSHIP

Commodore DeVilbiss will hold open house on the Flagship Priscilla Monday, July 13th from 2:00 P. M. to 4:00 P. M. All registered yachtsmen are invited to attend.

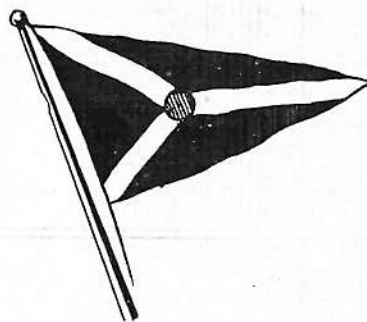


E. E. NOBLE
Vice-Commodore

I. L. Y. A.
Flag Officers
1925



HUGH GUNNISON
Rear-Commodore



OFFICERS 1925

Commodore, T. A. DeVilbiss, T. Y. C.
Vice-Commodore, E. E. Noble, C. Y. C.
Rear-Commodore, Hugh Gunnison, E. B. C.
Secretary-Treasurer, R. A. Luedtke, T. Y. C.
Fleet Captain, E. H. Reed, T. Y. C.
Fleet Surgeon, Dr. H. L. Sowash, P. I. B. Y. C.
Librarian, F. R. Frey, T. Y. C.
Sail Yacht Measurer, R. A. Luedtke, T. Y. C.
Power Boat Measurer, W. V. Gorton, C. B. C.

TRUSTEES OF YACHTSMEN'S FUND

W. R. Huntington, P. B. Y. C.
S. O. Richardson, Jr., T. Y. C.
F. W. Wakefield, V. B. C.
F. W. Roberts, C. Y. C.
Henry Hess, T. Y. C.
Sidney Frohman, S. Y. C.
A. R. Hackett, D. Y. C.
Chas. D. Lynch, Sec'y-Treas., D. Y. C.
1003 Lafayette Bldg., Detroit, Mich.

DELEGATES TO YACHT RACING
UNION

Dr. C. G. Jennings, C. C. D.
Otto F. Barthel, D. Y. C.
Robt. E. Power, C. Y. C.

Inter-Lake Committees

Sail Yacht Judges

Com. Hugh Gunnison, E. B. C., Chairman
 Com. S. O. Richardson, Jr., T. Y. C.
 Com. C. G. Jennings, C. C. D.
 Com. A. N. Simmons, E. B. C.
 Com. W. A. Wilson, B. Y. C.
 Com. F. W. Roberts, C. Y. C.
 Com. Otto F. Barthel, D. Y. C.

Sail Yacht Rules

Com. Alpheus F. Jennings, D. B. C., Chairman
 R. A. Luedtke, T. Y. C.
 Com. W. J. Billinglea, M. R. Y. C.

Sail Yacht Regatta

Com. Theo. Schmitt, T. Y. C., Chairman
 Wm. F. Broer, T. Y. C.
 Com. C. B. Cornell, B. L. Y. C.
 J. A. Schell, D. Y. C.
 J. J. Hayes, P. H. Y. C.
 Com. Harry V. Bisgood, B. C. C.
 H. J. Hall, E. B. C.

Power Boat Judges

Com. F. W. Wakefield, V. B. C., Chairman
 Com. O. W. Nelson, B. Y. C.
 C. B. Solders, C. B. C.
 Thos. McCann, P. H. Y. C.
 Com. W. R. Huntington, P. B. Y. C.
 Com. G. R. Marsh, G. P. Y. C.
 Com. A. A. Schantz, D. Y. C.

Power Boat Rules

J. G. Robinson, C. Y. C., Chairman
 W. D. Edenborn, D. Y. C.
 Dr. A. R. Hackett, D. Y. C.

Power Boat Regatta

W. V. Gorton, C. B. C., Chairman
 Com. H. W. Hess, T. Y. C.
 Com. E. Shanteau, O. R. Y. C.
 Com. J. A. Tallman, T. Y. C.
 W. F. Meier, C. Y. C.
 S. B. Egan, B. L. C.
 Dr. A. R. Hackett, D. Y. C.

Out Board Motor Race Committee

Judge Aaron B. Cohn, R. B. C., Chairman
 Albert J. Kelting, R. B. C.
 Eliss Bunn, R. B. C.

Model Yacht Committee

Del A. Heinle, T. Y. C., Chairman
 E. C. Chute, D. Y. C.
 Chas. H. Bowers, M. R. Y. C.

Other Sports Committee

Com. Edward W. Gettrost, B. L. Y. C., Chairman
 Com. Geo. Pierce, B. L. Y. C.
 Com. Chas. D. Lynch, D. Y. C.
 Leo J. Monahan, D. Y. C.
 Dr. N. J. Seybold, T. Y. C.
 J. A. Simonds, M. R. Y. C.

Publicity Committee

Frank L. Skeldon, T. Y. C., Chairman
 Com. Rollin Starr, T. Y. C.
 Ed. L. Ways, S. Y. C.
 John T. Robinson, C. Y. C.
 Harry Bullion, D. Y. C.
 F. J. Powers, C. Y. C.
 Eddie Edenburn, D. Y. C.

Squadron Sail

Com. A. G. Smith, P. B. Y., Chairman
 Com. W. L. Urschel, T. Y. C.
 Com. W. E. Bock, T. Y. C.
 Com. G. H. Wood, M. Y. C.
 Dr. J. W. Vaughan, D. B. C. Y.
 L. H. Thomson, D. Y. C.
 Owen Smith, D. Y. C.
 Edwin J. Mercer, D. B. C. Y.

Squadron Cruise to Pt. Clinton

Com. Geo. H. Ketcham, P. Y. C., Chairman
 Com. Sidney Frohman, S. Y. C.
 Com. F. W. Wakefield, V. B. C.
 Com. W. H. Reinhart, S. Y. C.

Trophy Committee

Com. J. W. Koehrman, T. Y. C., Chairman
 Chas. E. Sorenson, D. Y. C.
 Com. E. E. Noble, C. Y. C.
 Com. A. G. Smith, P. B. Y. C.
 Com. Sidney Frohman, S. Y. C.
 Alex I. McLeod, D. Y. C.

Ladies Entertainment Committee

Mrs. F. W. Roberts, C. Y. C., Chairman
 Mrs. T. A. DeVilbiss, T. Y. C.
 Mrs. F. R. Frey, T. Y. C.
 Mrs. R. A. Luedtke, T. Y. C.
 Mrs. A. G. Smith, P. B. Y. C.

Entertainment Committee

Com. F. R. Frey, T. Y. C., Chairman
 Com. A. G. Smith, P. B. Y. C.
 Ed. A. Zerbe, D. Y. C.
 Com. T. B. Alexander, P. B. Y. C.
 Com. John Koehrman, T. Y. C.
 W. H. Gunckel, T. Y. C.
 Com. Harry Austin, D. B. C. Y.
 Dr. Paul Kuebler, T. Y. C.
 Com. Albert Wakefield, V. B. C.
 Otto Vose, C. Y. C.
 Lee Keller, S. Y. C.
 Carl Torgler, M. R. Y. C.
 F. O. Gordon, T. Y. C.



"A KERMATH ALWAYS RUNS"

The popularity of motor boating is growing by leaps and bounds. For motor boating is the cleanest, snappiest, most exhilarating sport in the world. Pick the finest boats you can find and invariably they are equipped with the well-known Kermath marine motor. This motor is famous wherever boats are used. You will find it at all watering places throughout the civilized world. Used as a standard equipment by 80% of the big boat builders. For large or small boats.

Send for attractive literature and list of low prices.
 3 H. P. to 50 H. P.

Kermath Manufacturing Co.

5888 Commonwealth Ave. DETROIT, MICH.

YACHTING ASSOCIATION PRIZES

The Inter-Lake Yachting Assn. is indebted to the following donors for the trophies and other prizes listed and the Trophy Committee wishes to take this opportunity of thanking these individuals and firms and assure them that the donations are most sincerely appreciated.

SAIL BOAT RACES

First Prizes

Class "A"—Com. Geo. H. Ketcham Trophy.
 Class "J"—Theo. Barthel (Cup).
 Class "CC"—Com. E. D. Potter (Cup).
 Class "K"—Com. Walter F. Brown (Cup).
 Class "CK"—Alfred B. Koch (Cup).
 Class "R"—C. O. Miniger (Cup).
 Class "STAR"—Com. S. O. Richardson (Cup).
 Class "Y"—Toledo Blade (Cup).
 Class "DINGHY"—Toledo Times (Cup).

POWER BOAT RACES

First Prizes

Class "A"—C. E. Bunting (Cup).
 Class "E"—Robt. A. Stranahan (Cup).
 Class "F"—Frank D. Stranahan (Cup).
 Class "G"—Al. E. Rueben (Cup).
 Class "H"—Henry A. Page (Cup).
 Class "J"—Toledo News-Bee (Cup).

Commodore Cat Boat Race—Mayor Bernard F. Brough (Cup).

Ladies' Cat Boat Race—Com. Chas. Kotcher (Cup).

**COM. HARRY A. PARSONS
 MEMORIAL TROPHY, CLASS "R"**

The winner of the Class "R" series will be awarded the Com. Parsons perpetual trophy and silk flag, in addition to the C. O. Miniger cup.

In addition to the above donors, the Association is also indebted to Com. W. E. Bock, W. F. Broer, George R. Ford and Com. J. W. Koehrman for cash contributions to the Trophy Fund.

COM. R. GEORGE MARSH FLAG

Commodore R. Geo. Marsh will present a club flag to the Yacht Club having the largest number of members registered at the Regatta.

OTHER PRIZES

A number of prizes were received too late to list the donors' names. The Trophy Committee wishes to thank all these donors, however, and to let them know that we appreciate their gifts greatly. The committee reserves the right to re-arrange prizes as necessary.

The Toledo Edison Co.



Serving, directly or indirectly, the electric light, power, and artificial gas needs of more than 350,000 people.



GENERAL INFORMATION

Headquarters—New Put-in-Bay Yacht Clubhouse.
Secretary-Treasurer's office hours: 11:00 A. M. to 12:30 P. M., 4:00 P. M. to 6:00 P. M.

All visiting yachtsmen and ladies must register.

No entry fee will be charged in any event.

Sign your entry and state clearly all answers to questions.

Every yacht should be measured by the measurer of its home club and measurer's signature should be on entry blank.

All yachtsmen of the Inter-Lake and invited clubs, whether yacht owners or not, are invited and urged to participate in all of the events of the week and have their ladies participate wherever possible, to make the week successful in every way.

Get your entry in early to assist the committees.

All schedules subject to change as necessary. Watch Bulletin.

Obtain entry blanks, racing numbers and racing information at Headquarters.

Postponements, changes in courses or events, results and all official announcements will be posted on the Bulletin Board at Headquarters. Watch it.

Two or more entries must be received or an event will be cancelled.

Prizes in any event will be awarded according to number of entrants. If two entrants, only one prize will be awarded; if three entries, two prizes, etc.

Ball Tickets, Banquet Tickets, etc., may be purchased at Headquarters.

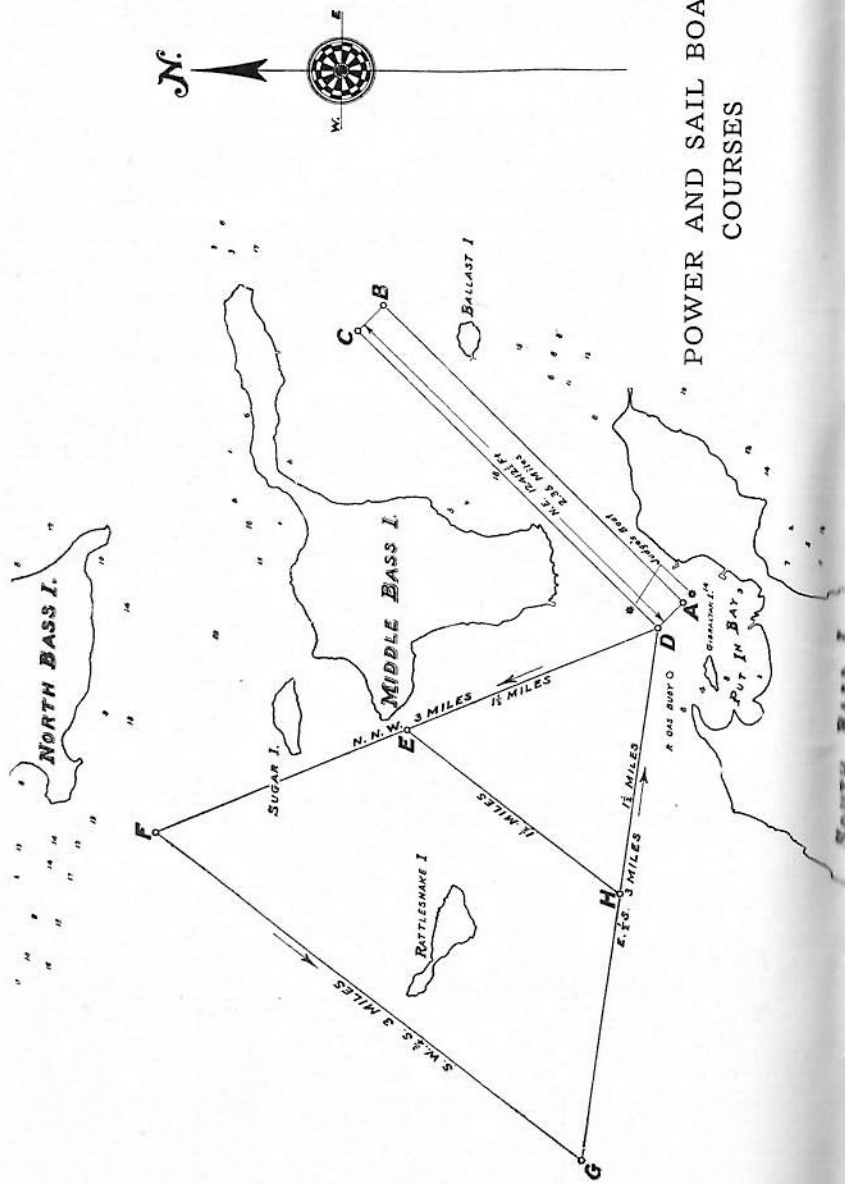
The "Priscilla" will be the flagship of Commodore T. A. DeVilbiss. All yachtsmen and others attending the regatta are invited to visit the flagship at any time during the meet.

All events of the regatta will be started promptly on time. Be on your mark.

The official time used at meet will be Put-in-Bay Yacht Club time, according to clock at Headquarters.

REGISTER AND GET YOUR BADGE PROGRAM

Every registered yachtsman or lady will be given an identification badge which entitles them to draw for prizes. There will be a drawing for grand prizes at the Yachtsmen's Ball. You must be present at the ball to claim any prize awarded.



MORNING

SUNDAY, JULY 12th

Long Distance Sail Yacht and Power Boat Races—All Classes.
 Bob Lo Island to Put-in-Bay, D. R. Y. A.
 Rocky River to Put-in-Bay, C. Y. C.
 Maumee River to Put-in-Bay, T. Y. C.
 Power Boat—Cleveland to Put-in-Bay, C. B. C.

MONDAY, JULY 13th

9:30—Committee meeting at Headquarters.
 All Committeemen please attend.
 10:00—Baseball Game.

TUESDAY, JULY 14th

8:30—Sail Yacht Races. All Classes.

WEDNESDAY, JULY 15th

8:30—Sail Yacht Races. All Classes.

THURSDAY, JULY 16th

8:50—Power Boat Races. All Classes.

FRIDAY, JULY 17th

8:30—Sail.

SATURDAY, JULY 18th

Cruise to Port Clinton, Ohio—Guests of Port Clinton Yacht Club.

PROGRAM
AFTERNOON

Registration at I. L. Y. A. Headquarters
 Races—All Classes.

2:00 to 4:00—Open house aboard the Flag-ship "Priscilla." All registered yachtsmen invited to attend.
 3:30—Shore Games. Yachtsmen and ladies.

1:50—Power Boat Races. All Classes.

1:50—Power Boat Races. All Classes.
 2:00—Ladies' Lawn Party. Bay View Hotel.

12:30—Swimming Championships.
 2:00—Squadron Sail.
 4:00—Novelty Races.

EVENING

Services St. Paul's Church, Rev. Selinger.
 Fleet Chaplain.

6:30—Yachtsmen's Dinner. Hotel Crescent.
 Bring the ladies.

8:30—Parade formation at Town Hall.
 9:00—MARDI GRAS PARADE.
 10:00—Grand Carnival and Mardi Gras Ball at Colonial.

8:30—Commodore's Reception aboard Str. "Chippewa." Dancing and Moonlight ride.

9:00—Yachtsmen's Ball. Colonial Pavilion.

8:00—Distribution of Prizes. Hotel Crescent.

SAIL YACHT PROGRAM

CLASSIFICATIONS

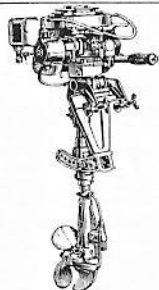
A—Cabin Cruisers
 H—18 ft. Class
 J—16 ft. Class
 CC—Cabin Cats
 D—Dinghies
 K—15 ft. Cats (Private Owned)
 CK—15 ft. Cats (Club Owned)
 R—Sloops
 S—Star Class
 Y—Yawls

STARTING TIME—SAIL YACHTS

Warning Gun	---	8:30	A.M.	
Preparatory Gun	--	8:45	A.M.	
Start Class "R"	----	8:55	Long Course	
" " "A"	----	9:00	" "	
" " "Y"	----	9:05	" "	
" " "H"	----	9:10	" "	
" " "J"	----	9:15	Short Course	
" " "S"	----	9:20	" "	
" " "K"	----	9:25	" "	
" " "CK"	----	9:30	" "	
" " "CC"	----	9:35	" "	
" " "D"	----	9:40	" "	

SCHEDULE OF RACES

Tuesday A. M.—All Classes.
 Wednesday A. M.—All Classes.
 Wednesday P. M.—^oWestern Lake Erie Fleet "Star"
 Class Championship.
 Friday A. M.—All Classes.
^oSpecial race arranged to decide "Star" Class
 Championship of Western Lake Erie Fleet.



The Greatest Evinrude Motor Ever Built

Consider the 8 Champion features of the New 1925 Champion Sport Twin: The Evinrude Super Power Magneto — Easy (rope) Starter—Automatic Instantaneous Reverse — Power Focus Drive—No-Clog Pump—Tilt-up attachment with lock for starting—Zenith Needle valve (automobile type) carburetor—and light weight, weighs only 40 lbs.—a really portable motor. Write for the new 1925 Evinrude Year Book.

EVINRUDE MOTOR CO.

288 Florence St. Milwaukee, Wis.

RULES

Certificate of measurement must be filed with entry. The Sail Yacht Regatta Committee reserves the right to order any yacht entered remeasured.

Races for all classes, starting five minutes apart on Tuesday, Wednesday and Friday mornings; starting first class at 8:55 A. M.

All races under Y. R. U. and I. L. Y. A. Rules, as amended to date.

In Class CK championship flag goes to skipper making highest percentage, cup to club having highest percentage with three boats.

Entries for all point races must be made with Sail Yacht Regatta Committee at headquarters before 6 P. M. Monday, July 13th, unless competing yacht arrives too late to enter before this time.

Alterations of the race program or sailing course may be made at the discretion of the Sail Yacht Regatta Committee. Such changes will be posted on Bulletin Board.

Numbers must be carried by each yacht on each side of its mainsail. These numbers will be supplied by the Sail Yacht Regatta Committee at Headquarters.

No person other than the Judges, Regatta Committee and Clerks will be allowed on Judges' boat without the consent of the Chairman of the Sail Yacht Regatta Committee.

All stakes to be left to port unless changed by Regatta Committee. If the Regatta Committee decides to reverse the course and have stakes left to starboard, a green flag will be flown from judges' boat. Red flag will mean all stakes to port. The judges' boat will fly a white flag with blue letters R. C.

Guns must not be fired from any yacht within one hour of the time of starting races, and not until after every yacht has crossed the finish line.

All vessels following the races must keep to leeward, and at such distance as not to interfere with the maneuvers of the competing yachts.

The races are open to every yacht which complies with the rules and which is regularly enrolled in any club in the Inter-Lake Yachting Association, Y. R. U., or which has been invited to participate in the races.

All boats sailing the long outside course will have four hours' time limit.

All boats sailing the short inside course will have three hour's time limit.

SAIL YACHT PRIZES

Classes	First Prize	2nd Prize	3rd Prize
"A"	Com. Geo. H. Ketcham Trophy	Mdse.	Mdse.
"J"	Theo. Barthel Cup	Mdse.	Mdse.
"CC"	Com. E. D. Potter Cup	Mdse.	Mdse.
"K"	Com. Walter F. Brown Cup	Mdse.	Mdse.
"CK"	Alfred B. Koch Cup	Mdse.	Mdse.
"R"	C. O. Miniger Cup	Mdse.	Mdse.
"Star"	Com. S. O. Richardson Cup	Mdse.	Mdse.
"Y"	Toledo Blade Cup	Mdse.	Mdse.
"Dinghy"	Toledo Times Cup	Mdse.	Mdse.

In addition to the trophies listed above, championship flags will be awarded to all winners.

COM. HARRY A. PARSONS
MEMORIAL TROPHY, CLASS "R"

The winner of the Class "R" series will be awarded the Com. Parsons perpetual trophy and silk flag, in addition to the C. O. Miniger cup.

LADIES' CAT BOAT RACE

Ladies' Cat Boat Race. Com. Chas. Kotcher cup.

COMMODORES' CAT BOAT RACE

Commodores' Cat Boat Race. Mayor Bernard F. Brough cup.

SAILING COURSES

The course for all series races for sailing yachts in Classes A, R, H and Y will be triangular, starting from a line between a flag buoy off the east end of Gibraltar Island and a similar flag buoy in line with the west end of Middle Bass, to and around a stake three nautical miles N. N. W., thence to and around a stake three nautical miles S. W. three-quarters S., thence to and around a stake three nautical miles, E. one-half S. to and across starting line between starting stakes. In finishing yachts must cross the starting line in the opposite directions from which they start. All stakes must be left to port, unless otherwise ordered by the Sail Yacht Regatta Committee as heretofore provided.

The course for Classes Star, J, K, CC, CK and D, starting from the same line, will be a shorter triangle with the same compass courses, but with one and one-half miles to the side, or a total of four and one-half nautical miles.

RULES COVERING CLASS "Y" (CRUISING YAWLS)

All yachts in this class will be governed by the Y. R. U. rules, and will obtain their measurement rating under the Y. R. U. rules (as adopted at Spring Meeting I. L. Y. A. 1923); with following exceptions:

Use of pot lead or similar compounds prohibited.

Actual sail area shall be measured (not the forward triangle).

Measurement shall be determined with full cruising equipment aboard, and all such equipment shall be carried aboard throughout all races (not including dinghy).

Two per cent will be added to actual sailing time of yachts without engine as allowance to yachts with engine.

Yachts equipped with engine shall have engine sealed.

There will be no restrictions on the number of passengers carried in this class of races.

CLASS STAR: Rules of the Star Class Yacht Racing Association to govern.

TIME ALLOWANCE

Time allowance will be computed on yachts in Classes A and Y, under the formula and table of the Yacht Racing Union, 1923 Rules.

WATCH BULLETIN BOARD

There will be a Bulletin Board at Headquarters where changes in program and special instructions will be posted throughout the week.

All yachts whose preparatory gun has not been fired must keep clear of starting line. Any yacht wilfully violating this rule will be disqualified.

THE CONLEN COTTAGE

EVERYTHING NEW

Hot and cold water in every room

Electric lights

POWER BOAT EVENTS

Classification

Class	Type
A	Open boats.
E	Cruisers measuring under 40 feet.
F	Cruisers measuring 40 to 60 feet.
G	Cruisers measuring 60 feet and over.
H	Express cruisers.
J	625 Cu. In. restricted class displacement racers.
K	Outboard motor class.

When You Put In At The Bay Go To

SCHNOOR & FUCHS

For your general merchandise, groceries, meats, fruit and vegetables in season. Fresh milk and cream. Tennis shoes, hardware and boat supplies.

A Boat for every Need and Speed

Wherever boating enthusiasts foregather you will always hear the Belle Isle Bear Cat and Hacker Dolphin spoken of in terms of warmest praise.

DISTRIBUTORS

for

The Mathews 38 Ft. Cruiser

BELLE ISLE - HACKER *Boat Sales Co.*

DISTRIBUTORS

BELLE ISLE BEAR CATS

DETROIT

HACKER DOLPHINS ~~

Sixty-three Hundred, E. Jefferson Ave.

TUESDAY, JULY 14, 1925

Preparatory Gun at 1:50 P. M.

Class	Start	Dis.	Rules	Type of Boats
A	2:00	10 mi.	I.P.B.U.	Open boats rat. 50 and under
E	2:10	10 Mi.	I.P.B.U.	Cruisers 40 and under
F	2:20	10 Mi.	I.P.B.U.	Cruisers 40 to 60
G	2:30	10 Mi.	I.P.B.U.	Cruisers 60 and over
H	2:40	15 Mi.	I.P.B.U.	Express cruisers
J	3:00	20 Mi.	Scratch	625 Restricted class

WEDNESDAY, JULY 15th

Preparatory Gun at 1:50 P. M.

Class	Start	Dis.	Rules	Type of Boats
A	2:00	10 Mi.	I.P.B.U.	Open boats rat. 50 and under
E	2:15	10 Mi.	I.P.B.U.	Cruisers 40 and under
F	2:30	10 Mi.	I.P.B.U.	Cruisers 40 to 60
G	2:45	10 Mi.	I.P.B.U.	Cruisers 60 and over
H	3:00	15 Mi.	I.P.B.U.	Express cruisers
J	3:15	20 Mi.	Scratch	625 Restricted class

THURSDAY, JULY 16th

Preparatory Gun at 8:50 A. M.

Class	Start	Dis.	Rules	Type of Boats
A	9:00	10 Mi.	I.P.B.U.	Open boats rat. 50 and under
E	9:30	10 Mi.	I.P.B.U.	Cruisers 40 and under
F	9:45	10 Mi.	I.P.B.U.	Cruisers 40 to 60
G	10:00	10 Mi.	I.P.B.U.	Cruisers 60 and over
H	10:15	15 Mi.	I.P.B.U.	Express cruisers
J	10:30	20 Mi.	Scratch	625 Restricted class

W. KIENZLER

GARAGE and MECHANIC

Storage Batteries Recharge Batteries
Pipe Fittings Auto and Boat Repairs
and Gas Machines

High Test Gasoline and Mobile Oils
PUT-IN-BAY, OHIO

POWER BOAT RACE RULES

- 1 Entries for all Power Boat races must be filed before July 13, 1925, at 6:00 P. M.
- 2 All boats in Classes A, B, E, F, G and H shall be measured by an accredited measurer of the A. P. B. A., their home club measurer, or the Inter-Lake Yachting Association power boat measurer. Boats not measured before their arrival at Put-in-Bay shall be reported at Inter-lake headquarters. The owner's name, boat's name, measuring fee, and anchorage shall be given to the secretary, so that the measurer can locate the boat readily.
- 3 Certificates of measurement must be filed with entries and the Regatta Committee reserves the right to remeasure at its option.
- 4 Races for each class shall consist of three heats. The first heat will be run under the 1921 I. P. B. U. racing rules. The second and third heats will be a handicap race with the limit boat starting first.
- 5 All boats in a class in the first heat will start at the same time and handicaps allowed by allowing time against the corrected time.
- 6 The boat making the most points in the three scheduled races for the class shall be declared the winner. Points to be awarded as follows:
One point for starting.
One point for each boat defeated, it being assumed for the purpose of this computation that the number of starters are the same in each heat.
- 7 The starting time for each boat in the second and third heats will be posted on the Bulletin Board two hours before start of race.
- 8 In case of tie for points, the race shall be awarded to the boat which has covered the course in the best total corrected time for the two heats.

POWER BOAT PRIZES

Classes	First Prize	2nd Prize	3rd Prize
"A"	C. E. Bunting Cup	Mdse.	Mdse.
"E"	Robt. A. Stranahan Cup	Mdse.	Mdse.
"F"	Frank D. Stranahan Cup	Mdse.	Mdse.
"G"	Al. E. Rueben Cup	Mdse.	Mdse.
"H"	Henry A. Page Cup	Mdse.	Mdse.
"J"	Toledo News-Bee Cup	Mdse.	Mdse.

MODEL YACHT RACES

Sailing Models. Sloop Rig

Rating rules adopted by the Model Yacht Racing Association of America shall apply to all models racing in the I. L. Y. A. Regatta.

46 inch Class B not over 46 inches and over 38 inch rating.

38 inch Class C not over 38 inches and over 31 inch rating.

31 inch Class D not over 31 inches and over 25 inch rating.

Racing rules adopted by the Model Yacht Racing Association of America shall also apply to racing of Models, unless otherwise specified between the parties making the races, but as no rule can be devised capable of meeting every incident and accident of sailing, it shall be the duty of the Regatta Committee to decide any question which may arise, and to discourage all attempts to win a race by other than fair sailing and superior speed and skill.

A member of the Regatta Committee, who is the owner in whole or in part, of a yacht sailing in a race, shall not act upon the committee on any question which concerns any race in which his yacht is competing.

POWER MODELS

Will be limited to displacement models of one inch piston displacement.

Races to be timed on a fifty foot radius, circle course. Regatta Committee to decide number of heats to be raced.

The
GREENWOOD-ATKINSON-ARMSTRONG
COMPANY

YACHTING UNIFORMS

We have the new "Inter-Lake" Button for sale
423 Woodward Ave. DETROIT

Schedule of Races for Thursday, July 16th

- 9 A. M. Class D sailing models
 10 A. M. Class C sailing models
 11 A. M. Class B sailing models
 1 P. M. Free for All Time allowance
 2:30 to 6 P. M. Power models

Special sail race, three entries from each club;
 committee to set time of race.

PRIZES

Silver Cup, one prize only (Free for All).

Medals awarded to first, second and third places in
 all other classes.

Silver Cup, one prize only (Special club race).

Each entry must be accompanied by a rating cer-
 tificate signed by the sail or power boat measurer
 of his respective club.

Each entry must provide for his own row boat.

REQUEST IMPORTANT

All owners of row boats or dinghies see that a
 model owner is supplied with your row boat as each
 Model contestant must accompany his yacht in the
 race. Row boats to be returned after each race.



Elto

3 Full H. P. Quarter Turn
 Starting Safe Rudder Steering
 Famous Propello-Pump — No
 Moving Parts to Wear
 Designed by Ole Evinrude

Elto Outboard Motor Co.

Milwaukee Dept. Y Wisconsin
 "STARTS WITH A TOUCH"

OUT BOARD MOTOR

CLASSIFICATION

Class	Piston Displacement
A	Under 12 cu. in.
B	Including 12 cu. in. and under 17 cu. in.
C	Including 17 cu. in. and under 30 cu. in. Minimum length of Boats 14 feet. Pointed Bow and Stern Canoes Barred.

TUESDAY, JULY 14th

Class	Preparatory Gun	Start	Distance
A	9:50 A. M.	10 A. M.	6 miles
B	1:50 P. M.	2 P. M.	6 miles
C	3:50 P. M.	4 P. M.	6 miles

WEDNESDAY, JULY 15th

Class	Preparatory Gun	Start	Distance
A	9:50 A. M.	10 A. M.	6 miles
B	1:50 P. M.	2 P. M.	6 miles
C	3:50 P. M.	4 P. M.	6 miles

THURSDAY, JULY 16th

Class	Preparatory Gun	Start	Distance
A	9:50 A. M.	10 A. M.	6 miles
B	1:50 P. M.	2 P. M.	6 miles
C	3:50 P. M.	4 P. M.	6 miles

Course—Special one mile course. Six times around. Lo-
 cation determined just before opening dates of regatta
 so consult Put Put headquarters immediately upon ar-
 riving at Put-in-Bay.

Distance—Six statute miles. Six laps.

Contestants—Open to all amateurs (as defined by A. P. B.
 A. Rules) owner of craft and motor in classes A, B
 and C of 1925 A. P. B. A. rules, except pointed bow
 and stern canoes and any boat under 14 ft. in length.

Start—All boats in a class will start together when white
 flag is dropped. Five ball system used for all classes.

Numbers—Contestants must report at committee boat at
 least 30 minutes before start of race in any class, for
 instructions and to receive racing numbers. No boats
 scored unless committee's racing number is carried at
 all times during race. Numbers must be pinned on
 back of owner and crew and must be visible to judges
 when passing committee's boat. In sending classes
 away, Starter will use White Flag with class letter
 in Black.

PRIZES

Never in the history of Put Put racing have such at-
 tractive prizes been assembled.

Each day for three days all classes will race, and three
 prizes will be awarded in each class, making a total of 27
 prizes. Nine of these will be silver trophy cups for firsts,
 18 substantial, appropriate and attractive merchandise
 prizes for seconds and thirds. In addition to prizes each
 contestant finishing 1st, 2nd or 3rd will receive a pennant
 with "I. L. Y. A." place and date inscribed. And still
 further—three time prizes will be awarded to contestants
 making best time for six miles of race. Winner must have
 competed all three days in his class.

OTHER SPORT EVENTS

Monday

10:00 A. M. Baseball game

3:00 P. M. Shore games

1. Hobble Race (women)
2. Sack Race (men)
3. Spoon and Bean Race (women)
4. Cracker Eating Contest (men)
5. Flapper and Chicken Race (women)
6. Tug of War (men)

Thursday

12:30 P.M. Inter-Lake Swimming Championships. Sanctioned by Allegheny Mountain Association of A. A. U. Open to all registered A. A. U. athletes.

Men

50-yd. Free Style
100-yd. Free Style
200-yd. Free Style
150-yd. Backstroke
200-yd. Breaststroke
Fancy Diving, 10-ft.
board

Women

50-yd. Free Style
100-yd. Free Style
100-yd. Backstroke
100-yd. Breaststroke
Fancy Diving, 10-ft.
board

3:00 P. M. American Red Cross Life Saving Corps.

4:00 P. M. Ladies' Cat Boat Race
Ladies' Power Boat Race
Commodores' Cat Boat Race
Dinghy Novelty Race

BAY VIEW HOUSE

Fishing — Boating — Bathing — Dancing

CHICKEN and FISH DINNERS

Adjacent to the Yacht Club

J. J. Day, Proprietor

DETROIT CHAPTER AMERICAN RED CROSS
LIFE SAVING CORPS

Thursday, July 16th, 3 P. M.

1. Diving
6 girls and 6 boys (20 dives).
2. Canoe Handling
 1. Two overdressed girls change seats, overturn canoe.
 2. Two properly dressed boys rescue girls and show them how to right canoe and paddle without paddles.
3. Life Saving
 1. Man in clothes falls off dock (non-swimmer). Girl rescues, showing carry.
 2. Teams show different holds, breaks and tired swimmer carries.
4. Resuscitation
Team show.
5. Strokes
 1. Group enter water as caterpillar.
 2. Separate into cross, wheel and other designs.
 3. Change into back stroke, front stroke, breast stroke, etc.
6. Free lessons
The Schaefer method resuscitation will be taught by Red Cross members to any one wishing to learn.
Yachtsmen will please ask men wearing Red Cross emblem for instructions. Instruction for women will be given by Red Cross women.
Every Yachtsman should know resuscitation
7. Land First Aid
Michigan State Telephone Company's Prize Team will demonstrate in the grove.

REGATTAITES! You can obtain Canvas Footwear, Middy Hats, Blouses and Duck Trousers, also Drugs and Toilet Articles at

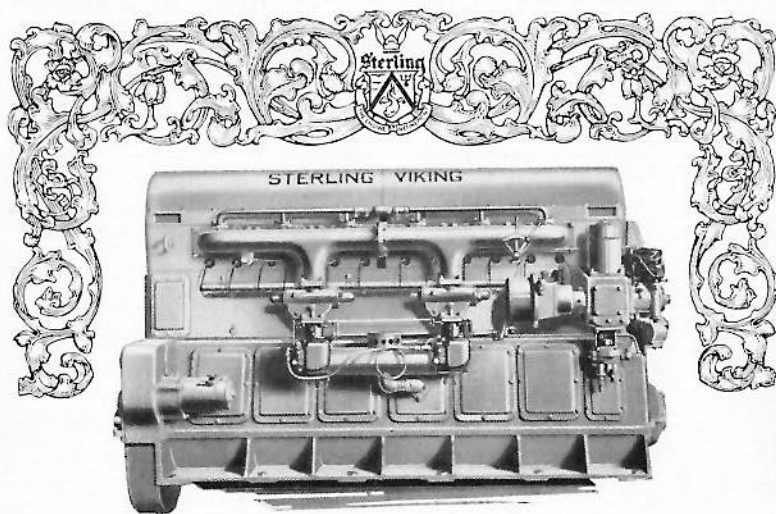
E. OELSCHLAGER STORE

GENERAL MERCHANDISER

Put-in-Bay

Phone 18

Ohio



Sterling Models Include:

DOLPHIN SPECIAL, 4 and 6 cyl. engines for racing and fast runabouts, 180-290 H. P.

DOLPHIN, 4, 6 and 8 cyl. engines for faster cruisers and runabouts, 125-300 H. P.

DOLPHIN MEDIUM, 4, 6 and 8 cyl. engines for medium speed cruisers and fishing boats, 72-220 H. P.

TRIDENT, 4, 6 and 8 cyl. slow turning engines for heavy cruisers, work boats and auxiliaries, 30-126 H. P.

VIKING, built only in 6 cylinders for fast cruisers and heavy boats, 50 to 150 ft. long, 100-300 H. P.

SEAGULL, built only in 6 cylinders for runabouts and cruisers, 150 H. P.

NEPTUNE, 2 cylinders, 4 cycle, 12-15 H. P. for cruisers, auxiliaries, fishing and trolling boats.

COAST GUARD, built only in 6 cylinders for heavy cruisers, houseboats and workboats, 200-300 H. P.

STERLING ENGINE CO.

Buffalo, N. Y.

ENTERTAINMENT PROGRAM

Yachtsmen and ladies are requested to register at Headquarters on arrival.

Those desiring to view Sail Yacht races from yachts are urged to inquire at Headquarters and they will be placed aboard private yachts if possible. Yacht owners are asked to leave word at Headquarters of their desire to co-operate to entertain visitors in this manner.

Monday, July 13th

2:00-4:00 P. M. Open House for Yachtsmen aboard Flagship *Priscilla*.

6:30 P. M. Yachtsmen's Dinner, Hotel Crescent. Yachtsmen and ladies invited. \$2.00 per person. Number limited to 150.

Tuesday, July 14th

8:30 P. M. Assemble opposite Town Hall for parade.

9:00 P. M. Grand Carnival and Mardi Gras parade.

10:00 P. M. Grand Carnival and Mardi Gras Ball at Colonial. Tickets, \$1.50 per couple.

Wednesday, July 15th

2:00 P. M. Ladies' Lawn Party, Bay View Hotel, in charge of Ladies' Entertainment Committee, Mrs. F. W. Roberts, chairman.

8:30 P. M. Commodore's Reception aboard Steamer *Chippewa*. Dancing, entertainment, and moonlight ride.

Thursday, July 16th

2:00 P. M. Squadorn Sail. Yachtsmen and ladies not having yachts at the Bay are invited to ride aboard yachts participating. Apply at Headquarters and be on board before 2 P. M.

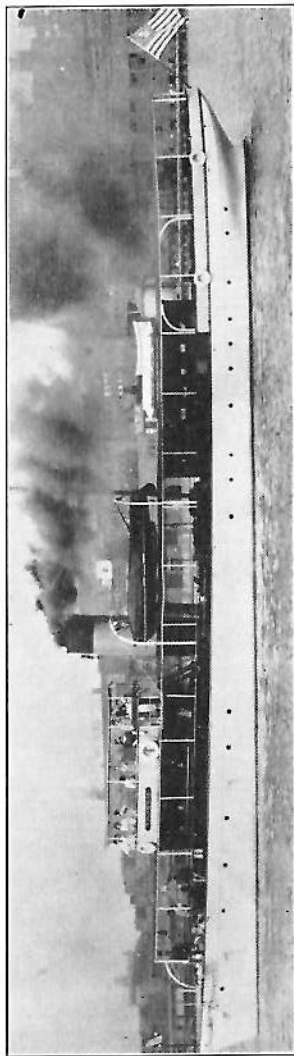
9:00 P. M. Yachtsmen's Ball, Colonial Pavilion. Tickets \$2.00 per couple. Extra ladies with escort, free. Dancing until 1:00 A. M.

Friday, July 17th

8:00 P. M. Prize distribution, Hotel Crescent Pavilion.

THE STEAM YACHT, "TILlicum"

Finest Pleasure Craft on the Great Lakes



OFFERED FOR SALE BY

The E. H. Close Realty Company

513-515 MADISON AVENUE

TOLEDO, OHIO

NOTES

Yachtsmen—Do not forget to register.

Ladies—Do not forget to register and be sure and attend the Lawn Party Wednesday afternoon at the Bay View Hotel.

Remember the cruise to Port Clinton Saturday. All registered yachtsmen and ladies invited as guests of the Port Clinton Yacht Club.

See the races from Perry's Memorial Monument. A fine view of both the Sail Yacht and Power Boat courses.

The U. S. S. *Morrill*, William Williams, Lieutenant Commander, U. S. C. G., commanding, will patrol the course during the races.

Remember, this is your Regatta. You will enjoy it the more after making your contribution to the Yachtsmen's Fund. See Com. Chas. Lynch who will take your subscription.

TUESDAY—Mardi Gras Day. All clubs will join in the Mardi Gras parade in the evening. Everyone expected to join in the fun and frolic. Elegant prizes will be awarded for best costumes.

Remember the Port Clinton Cruise Saturday.

A number of prizes were received too late to list the donors' names. The Regatta Committee wishes to thank all these donors, however, and to let them know that it appreciates their gifts greatly.

The Rittman Market

'Good Things to Eat'

PUT-IN-BAY, OHIO

DOES YOUR BOAT LEAK?

Write us about all your leak troubles
and we will tell you how to fix them



JEFFERY'S
Waterproof
Marine
Glues



No. 1 Extra Quality Marine Glue
for deck seams

No. 7 Soft Quality Marine Glue
for the leakproofing process

C Quality Waterproof Liquid Marine Glue
for canvassing decks

Ferdico Seam Filler
for under water seams

Send for Booklets

"MARINE GLUES—WHAT TO USE
AND HOW TO USE IT"

"HOW TO MAKE YOUR BOAT LEAKPROOF"

L. W. FERDINAND & CO.

152 Kneeland St.

BOSTON

MASS.

MILLER'S BOAT LIVERY

Launches — Row Boats

Special Attention to Bass Fishing Parties

We Will Take You Anywhere—Anytime

Phone 42-W

RETAIL ICE

PUT-IN-BAY

Put-in-Bay Island is situated well out in Lake Erie, a sufficient distance from mainland to insure cool, fresh air at all times.

It is large enough to warrant each one the pleasure he seeks without interference with or from others, thus enabling one to enjoy, without restraint, the fullest individual freedom.

The walks, and drives, shady dells, rock formations, caves, bathing beach, dancing, bowling, boating, fishing, automobiling, fish hatcheries, light house, vineyards and green forests present an ever changing panorama which delights the eye, invigorates the body and brings the blush of youth to the pale cheek of the fagged-out city dweller.

CALL ON T. B. AT THE
CRESCENT HOTEL

Featuring Meals and a Good
Home away from Home

SERVICE AT ALL HOURS

Doehler Die Casting Co.

World's Largest Producers of

Die Castings

Plants at

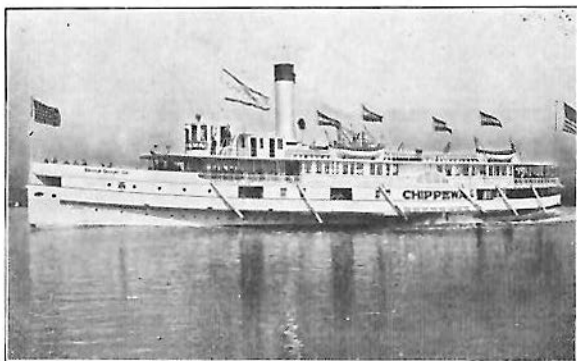
Brooklyn, N. Y.

Toledo, Ohio

Batavia, N. Y.

Pottstown, Pa.

OUR HOME SHIP



Steamer Chippewa

The Commodore's reception will be held on Wednesday, July 15th, at 8:30 aboard the Steamer Chippewa.



A Wonderful

DECK ENAMEL

Lionoil resists wear to an unusual degree

BERRY BROTHERS
Varnishes Enamels Stains

DETROIT

PERRY MEMORIAL

The Perry Memorial, a monument built by moneys contributed by the states of Ohio, Pennsylvania, Michigan, Illinois, Wisconsin, New York, Rhode Island, Kentucky, Minnesota, Louisiana, the United States Government and Canada. It is an international shaft, 365 feet high, built in commemoration of 100 years of peace between Great Britain and United States. It is the offering of the American and British people to the memory of Oliver Hazard Perry, who so gallantly, with his forest-hewn war vessels, defeated an English fleet, commanded by the intrepid Englishman, Admiral Barklay, in 1813.

A modern electric elevator, which runs at a speed of 250 feet per minute and is equipped with safety devices, so that there is absolutely no danger of its falling, carries you to the top. Strong field glasses are provided. On a clear day one can see far into Canada, and to the mouth of the Detroit River. A view from this monument is one ever to be remembered.

TAKE ALONG SOME *DELICIOUS*

Lakeside SUGAR WAFERS



TWELVE
VARIETIES

IN PACKAGES
BULK and 5c BAGS

MADE IN
TOLEDO

SAILORS AHOY!

Put-in-Bay Bottling Works

Service SOFT DRINKS Quality

N. H. LADD, Prop.

Phone 25-W

EQUIPMENT REQUIRED BY U. S. GOVERNMENT

CLASS I—BOATS UNDER 26 FEET, L.O.A.

Sound Apparatus

Whistle capable of producing blast prolonged for at least 2 seconds.

Lights

Combination red and green lantern (or bow and colored side lights) and stern light.

CLASS II—BOATS 26-40 FEET, L. O. A.

Sound Apparatus

Same as Class I plus fog horn and bell.

Lights

White forward lights (lens at least 19 square inches); white stern light; green starboard light; red port (lens at least 16 square inches) screens at least 18 inches long; lenses, fresnel or fluted glass.

CLASS III—BOATS 40-65 FEET, L. O. A.

Sound Apparatus

Same as Class II, except bell must be at least 8 inches across mouth.

ROUND HOUSE CAFE

Fried Spring Chicken

The Original Hot Hamburger

Put-in-Bay

Ohio

OTIS ZIGLER

*Shooting Gallery and
Fishing Parties*

Put-in-Bay

Ohio

Lights

White forward light with lens at least 31 square inches; white stern light, green starboard light, red port lights, lens at least 25 square inches; screen at least 24 inches long; lenses, fresnel or fluted glass.

ALL CLASSES

One life preserver for each person aboard. Life preservers, life belts, buoyant cushions, ring buoys, or similar devices in sufficient number for every person on board, and placed so as to be readily accessible. Life preservers or buoyant cushions must be capable of keeping afloat for twenty-four hours a weight exerting a direct downward pull of 20 pounds, on boats not carrying passengers for hire. No pneumatic life-saving appliances, or appliances filled with granulated cork will be permitted. Planks, gratings, etc., or small boats in tow cannot be substituted for required life-saving appliances. Floats of seasoned wood, not exceeding white pine in

Yachtsmen Will Appreciate Knowing

THE PARK HOTEL

Is Still Operating Its Splendid

Dining Service

MAKE RESERVATIONS EARLY — LUCAS MEYERS, Prop

THE COLONIAL

Put-in-Bay

Dancing — Bowling

Lunches and Refreshments

weight and measuring at least 4 feet by 14 inches by 2 inches, may be used.

A fire extinguisher capable of extinguishing gasoline fires.

At anchor, a white light only, less than 20 feet above hull, visible around horizon for at least one mile.

Two copies of the Pilot Rules must be carried on board.

The Henry J. Spieker Co.

Builders



Elm and Utica Streets

Toledo, Ohio



Telephones, Main 7317-8-9-20

ENGINEERS' SIGNALS

The following are universally used on salt water:

One bell (when engines are at rest), ahead slow.

Jingle bell (when going ahead slow), full speed ahead.

One bell (when under full speed ahead), slow down.

One bell (if going ahead slow), stop.

Two bells (when engines are at rest), astern slow.

Jingle bells (when going astern slow), full speed astern.

One bell (when going astern either at full or half speed), stop.

Four quick bells (when going ahead full speed), astern full speed.

The following signals are in use on the Great Lakes:

Four bells, strong One bell, go ahead.

Four bells, all right. One bell, stop.

Three bells, check. Two bells, back.

Two bells (when engine is working ahead) stop and back strong.

A whistle may be substituted for a bell on the Great Lakes.

Arbor Inn Cafe

EAT

Anything you want — any time you want

Soft drinks — Cigars — Cigarettes

Put-in-Bay

Ohio

When

You

Think

of

BUILDING

Think

of

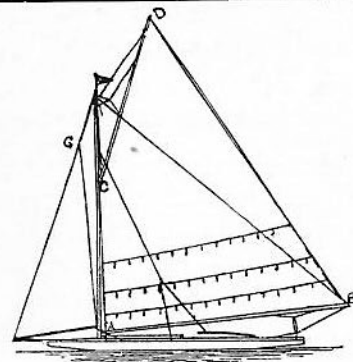
Bentley

*The A. Bentley & Sons Co.,
Toledo, Ohio*

TABLE OF EQUIVALENT OF NAUTICAL AND STATUTE MILES

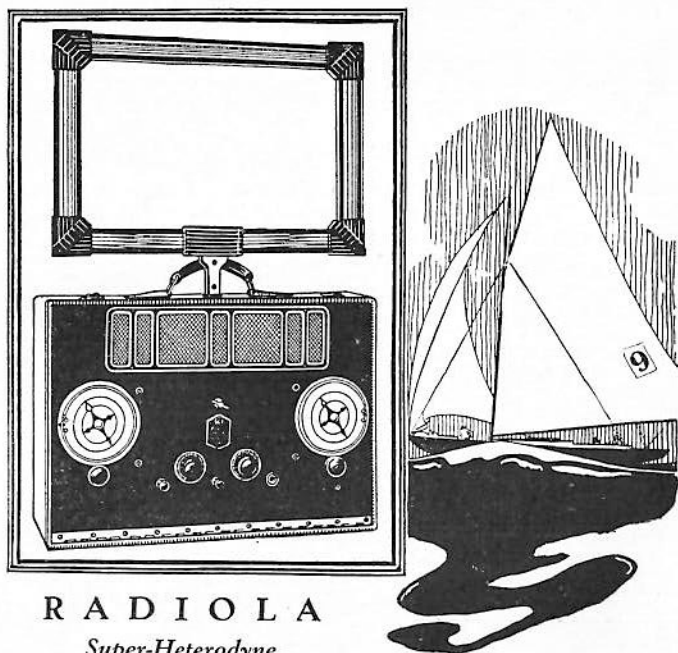
The Admiralty Knot—6,080 Ft. 1 Statute Mile—5,280 Ft.

Knots	Miles	Knots	Miles	Knots	Miles	Knots	Miles	Knots	Miles
1 00	1.152	5.75	6.621	10.50	12.091	15.25	17.561	20.00	23.030
1.25	1.439	6.00	6.909	10.75	12.379	15.50	17.848	20.25	23.318
1.50	1.727	6.25	7.197	11.00	12.667	15.75	18.136	20.50	23.606
1.75	2.015	6.50	7.485	11.25	12.955	16.00	18.424	20.75	23.894
2 00	2.303	6.75	7.773	11.50	13.242	16.25	18.712	21.00	24.182
2.25	2.591	7.00	8.061	11.75	13.530	16.50	19.000	21.25	24.470
2.50	2.879	7.25	8.349	12.00	13.818	16.75	19.288	21.50	24.758
2.75	3.167	7.50	8.636	12.25	14.106	17.00	19.576	21.75	25.045
3.00	3.455	7.75	8.924	12.50	14.394	17.25	19.864	22.00	25.331
3.25	3.742	8 00	9.212	12.75	14.682	17.50	20.152	22.25	25.562
3.50	4.030	8.25	9.500	13 00	14.970	17.75	20.439	22.50	25.909
3.75	4.318	8.50	9.788	13.25	15.258	18 00	20.727	22.75	26.197
4.00	4.606	8.75	10.076	13.50	15.545	18.25	20.015	23.00	26.485
4.25	4.894	9 00	10.364	13.75	15.833	18.50	21.303	23.50	27.061
4.50	5.182	9.25	10.652	14.00	16.121	18.75	21.591	24.00	27.636
4.75	5.470	9.50	10.939	14.25	16.409	19.00	21.879	24.50	28.212
5.00	5.758	9.75	11.227	14.50	16.697	19.25	22.167	25.00	28.788
5.25	6.045	10.00	11.515	14.75	16.985	19.50	22.455		
5.50	6.333	10.25	11.803	15 00	17.273	19.75	22.742		



HEADQUARTERS for canvas covers, yacht paints and varnishes, ropes, blocks, sails and other yacht supplies since 1844. Write for our prices.

The M. I. Wilcox Company
212-214 Water Street



RADIOLA
Super-Heterodyne
PORTABLE

All you have to do is carry 'er aboard!

Now yachtsmen can enjoy radio concerts aboard ship with the new Radiola "Super-Het" Portable. Everything is compactly built into a fine cowhide suitcase—loud speaker, batteries and all. No wires to worry about. Simply carry 'er aboard and tune in.

THE W. G. NAGEL ELECTRIC CO.
 Toledo, Ohio

Distributors of R. C. A. products. Also manufacturers of the Nagel Voltmeter, a two-in-one instrument for testing the batteries of your "Super-Het."

YACHT ROUTINE

Adopted by the Leading Yacht Clubs of the United States

Colors, Etc. In making colors, salutes, etc., the yacht always represents the rank of the owner, whether he is aboard or not.

Yachts in commission should hoist their colors at 8 o'clock A. M., and haul them down at sunset, taking time from the senior officer present.

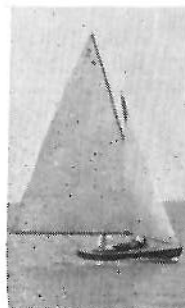
Before colors in the morning and after colors at sunset, the ensign and distinguishing flags should be shown when entering port, and should be hauled down immediately on coming to anchor.

At all other times yachts should fly a night pennant at the main, from colors at sunset until colors the next morning.

No guns should be fired for colors except by the yacht giving the time, nor from colors at sunset until colors the next morning, nor on Sunday.

Absence flags and meal pennants are not considered colors.

On Decoration Day and occasions of national mourning the ensign only should be half-masted. On



Sailmakers and Riggers

Makers of

Yacht Flags and Cushions
Fenders, Yacht Chairs

Established 1878

J. C. Goss Co.
QUALITY

Bates at Woodbridge Street

DETROIT, MICH.

the death of the owner of the yacht, both the Club flag and his private signal should be half-masted, but not the ensign. When mourning is ordered for the death of a member of the Club, the Club flag only should be half-masted. This rule should apply to yachts both at anchor and under way.

Flags should always be mastheaded before half-masting them, and should be mastheaded before hauling them down. Saluting with the ensign at half-mast should be done by mastheading first.

Officer in Command at Anchorage. The senior officer present should be in command of the anchorage, should give the time for colors, make and return salutes, visits, etc.

His yacht should remain the station vessel until a senior to him in rank arrives and assumes the command of the anchorage.

Pennants, Private Signals, Etc. Flag officers should always fly their pennants while in commission.

Yachts, when the owner is not aboard, should fly at the main starboard spreader, during daytime, a

COMPLIMENTS OF

Jerry McCarthy

FORD and LINCOLN

DEALER



DIX AVENUE AT VINEWOOD

DETROIT

MICH.

Engineers — Designers

Toledo Wire & Iron Works

Contractors and Manufacturers

STRUCTURAL STEEL

ORNAMENTAL IRON AND BRONZE

Corner Locust and Oneida Streets

Established 1876 - Toledo, Ohio - Phone Main 937

blue flag rectangular in shape. This flag should never be flown when under way.

Single-masted vessels should fly the private signal of the owner when entering a home port, or when approaching other yachts at sea; at other times the Club flag, except when with squadron.

Meal Pennants. A white flag, rectangular in shape, should be flown at the main starboard spreader on schooners, and at the starboard spreader on single-masted vessels, during the meal hours of the owner.

A red pennant pointed in shape should be flown at the foreport spreader on schooners, and at the port spreader on single-masted vessels during the meal hours of the crew. A white light should be displayed on starboard spreader after sunset and during the owner's meal hours.

Lights. COMMODORE. From colors at sunset until sunrise the Commodore should show, when on board, two blue lights, perpendicularly, at the stern; when absent, one blue light should be shown.

VICE-COMMODORE. The Vice-Commodore

McCann's Barber Shop

"Service our Motto"

Laundry and Dry Cleaning

The Yachtsmen all know "Mac"

Put-in-Bay

CENTRAL HOTEL

S. J. CAMPBELL, Prop.

American and European Plan

Regular Chicken, Fish and Meat Dinners, 75c

Near Boat Landing

Facing the Park

PUT-IN-BAY, OHIO

should show lights as provided for the Commodore, substituting red lights instead of blue.

Captains. Captains, when on board, should show a white light under the main boom; when absent this light should be extinguished.

Salutes. All salutes should be returned in kind.

The following rules should not apply to yachts leaving for, or returning, from a day's sail.

Yachts should salute vessels of the United States Navy by dipping the ensign once.

The Commodore, on entering port to join the squadron, should be saluted, on coming to anchor, by the yachts present.

On all other occasions the Commodore should be saluted, on coming to anchor, by the officer in command.

Junior flag officers should be saluted, on coming to anchor, by the officer in command, unless the lat-

DEISLER BATHING BEACH

J. M. DEISLER, Prop.

The ONLY BATHING BEACH ON THE ISLAND

Free Toboggan and Rubber Chute

Best Diving Planks

ter be a senior in rank, in which case they should salute him.

Captains should on all occasions salute the officer in command.

The salute from yachts entering port should be made by dipping the ensign once, or by firing a gun on letting go anchor.

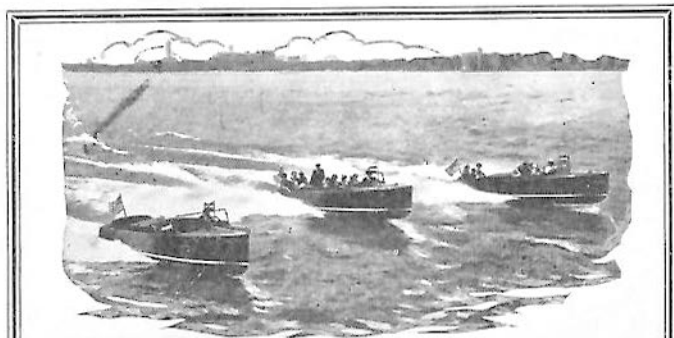
The senior officer, when leaving the anchorage, excepting temporarily, should indicate the transfer of command to the next in rank by firing a gun on getting under way. All other yachts should salute the officer in command.

All visits should be made according to rank.

Yachts, passing one another, should always exchange salutes by dipping the ensign once, juniors saluting first. Steam whistles should never be used to make salutes.

The salute to yachts entering port, entitled to a salute, should be made by dipping the ensign once, or by firing a gun, when they let go anchor.

An official salute to a foreign club should be made



Chris-Craft Runabouts

Ready for immediate delivery
\$3,200 f. o. b. Algonac

Chris Smith & Sons Boat Co.

Algonac

Michigan

Again under management of Mrs. Susie Sands

HOTEL COMMODORE

American and European plan, fine dining room and restaurant

The Only Lake Front Hotel

by firing a gun, with the flag of the foreign club at the fore on schooners and steamers, and at the main on single-masted vessels; or, in the absence of such flag, by half-masting the Club flag and firing a gun. When the salute has been returned, or a reasonable time for its return allowed, the flag should be hauled down, and the Club flag hoisted again.

The salute from or to yachts arriving after sunset, or on Sunday, should be made immediately after colors on the following morning.

When a flag officer makes an official visit, a gun should be fired, with his pennant at the fore on schooners and steamers, and at the main on single-masted vessels, while he remains on board.

A yacht, acting as judges' boat, should not be saluted during a race.

The quarter-deck should always be saluted by lifting the cap on coming on board or from below.

With the Squadron. Yachts should report to the commanding officer on joining the squadron, and should obtain his permission before leaving it.

When under way with the squadrons, firing guns and signaling should be avoided, except when join-

PUT-IN-BAY CAFETERIA

Formerly "Jim's Place"

Most up-to-date

Prices very reasonable

Parties by arrangement

Special rates for Inter-Lake Yachtsmen

J. A. POULOS, Prop.

ing or parting company, or when repeating signals.

Passing at Sea. When squadrons of different clubs meet at sea, salutes should be exchanged only by the commanding officers.

Salutes from single yachts at sea should only be answered by the flagship.

Single-masted vessels should fly the private signal of the owner when under way with the squadron; when at anchor, the Club flag.

When a foreign yacht arrives, the senior officer present should send on board, without regard to rank, a tender of the civilities of the Club.

Entering a Foreign Port. Yachts should salute on entering port in the home waters of a foreign club, where any of its fleet are lying. After the tender of civilities has been made, owners of the entering yachts should visit the officer in command of the anchorage. All other visits should be made according to rank—visits to their equals in rank being made by the owners of the entering yachts.

The time for colors in the home waters of a for-



Fit-Out-Right



Use Only Hard Gum

"Cup Defender Varnishes"

AQUATITE—the hard fossil gum spar;

I. X. L. FLOOR FINISH, for protected decks;

SMITH'S YACHT WHITE ;

MARINE WHITE ENAMEL;

SMITH'S YACHT DECK BUFF;

YACHT BLACK GLOSS;

CANOE ENAMELS;

SMITH'S FRICTIONLESS RACING BOTTOM FINISH;

SMITH'S RACING BOTTOM GREEN;

"Cup Defender Varnishes"

Place Your Order Now

Don't wait until your dealer may be out of some of our varnishes, enamels or paints you may want. Order now so that he can get what you want in plenty of time.

If your dealer does not handle our products, write us for prices, catalogues and name of dealer who does.

Smith's Cruising

Bottom Green

Prevents Marine Growths On The Ship's Bottom

EDWARD SMITH & CO.

West Ave., 6th and 7th Sts., Long Island City, N. Y.

O. G. HERBSTER

Photographer

Speed pictures a feature
Photo post cards and views
Developing and printing
Kodaks and films

Opposite Park Fountain
PUT-IN-BAY, OHIO

eign club should be given with its senior flag officer present.

The term "foreign" should be understood as applying to all other clubs outside of the waters in which a club is stationed.

Boat Service. The order of entering and leaving boats is, juniors enter first and leave last.

Flag officers and the fleet-captain should fly their pennants and Captains their private signals, when in their boats; members, the Club flag. After sunset a white light should be shown at the bow.

Passing one another, juniors should salute seniors by raising the cap.

Every boat approaching a yacht at night should be hailed.

The answer of the Commodore, when intending to board, should be "Commodore"; for Junior flag officers, and fleet-captains, "Flag"; for captains and members, "Ay, ay"; for captains returning on board, the name of their yacht; for visitors, "Visitors"; for sailing masters, etc., "No, no"; using the port side; for passing boats; "Passing."

V. DOLLER

Dealer in
GENERAL MERCHANDISE

A full and complete line of supplies
Always on Hand

GASOLINE FILLING STATION
AT DOLLER'S WHARF

Put-in-Bay

Phone 15

Ohio

FLAGS AND HOW FLOWN

Though there are no hard and fast rules regarding shapes and colors of yachts bunting, the following is generally accepted by the prominent clubs in the United States and in foreign countries:

Yachts carry the ensign of the country to which they belong. The ensign should be flown as follows:

AT MAIN PEAK by Cat-rigged Yachts, Sloop-rigged Yachts and Cutter-rigged Yachts.

AT MAIN MASTHEAD by Schooner Yachts.

AT STERN FLAGSTAFF by Launches, Gigs and Dinghys.

AT TAFFRAIL FLAGSTAFF by Steam Yachts.

AT MIZZEN PEAK, or JIGGER MASTHEAD by Yawl-rigged Yachts.

All Yachts at anchor display the ensign at taffrail flagstaff.

The CLUB BURGEE, which indicates to which

30,000 Kinds and Sizes

of

Machinery

Tools

Metals

Shop Supplies

"Everything For The Shop"

The

Chas. A. Strelinger Co.

149 E. Larned St.
Detroit

Be Good to Yourself

Your ICE CREAM, SODA, CANDY and
SMOKES await you at

Smith's Ice Cream Parlor
Put-in-Bay, Ohio

club the owner of the Yacht belongs, is flown as follows:

At MASTHEAD by Cat-rigged Yachts, Sloop-rigged Yachts, and Cutter-rigged Yachts.

At MAIN MASTHEAD by Yawl-rigged Yachts.

At FORE MASTHEAD by Steam Yachts and Schooner-rigged Yachts.

A BOWSTAFF by Launches, Gigs and Dinghys.

The Private Signal, which designates the owner of the Yacht, is flown as follows:

At MASTHEAD or on FORESTAY by Cat-rigged Yachts.

At MIZZEN MASTHEAD or MIZZEN PEAK by Yawl-rigged Yachts.

At MASTHEAD (when cruising in Squadron) by Sloop-rigged Yachts and Cutter-rigged Yachts.

At MAIN MASTHEAD by Steam Yachts and Schooner-rigged Yachts.

At BOWSTAFF by Launches, Gigs and Dinghys.

TALIAFERRO'S

Ladies' Shampooing, Massaging, Marcel
Waves and Curling

Semi and Shingle Bob Hair Cutting
a Specialty

COMMODORE HOTEL BLDG.

FLAG OFFICERS' SIGNALS are mostly colored:—Blue for Commodore, Red for Vice-Commodore, and White for Rear-Commodore.

The following flags are not considered as colors:

NIGHT PENNANT (blue) is hoisted at the main truck from sundown to 8 A. M., also occasionally used as a tell-tale when racing or sailing.

OWNERS' ABSENT FLAG (blue rectangular) is flown from the main starboard spreader when yacht is at anchor only. It denotes owner is not on board, but should never be flown when under way.

OWNERS' MEAL FLAG (white rectangular) is flown from the main starboard spreader and denotes the owner is at meals. Boarding a yacht when this flag is flying is considered bad form.

Meal pennants should not be flown when under way.

CREW MEAL FLAG (red triangular) is flown from the foreport spreader on schooners and mainport spreader on single-masted yachts. This denotes the crew is at meals.

CITIZENS

ICE

MAKES

YACHTING

NICE

The

Citizen's Necessities Co.

Toledo, Ohio

"BUFFALO" Marine Motors Row Boat Motors	"COLUMBIAN" Bronze Propellers Reverse Gears
Henry H. Smith & Co. Motor Boat Supplies EVERYTHING FOR BOATS 334 JEFFERSON AVE., EAST. DETROIT	

CHURCH PENNANT (white triangular, with blue cross) is the only flag ever displayed above the ensign, and only during divine service, with Yacht at anchor.

WATER FLAG (white rectangular, with word "water" in centre, in black letters) is the signal for water boat. May be displayed from any part of the yacht.

The official day on board of a yacht begins with colors (8 A. M.) and ends with the boom of senior officer's gun, at sunset, when the night pennant should be hoisted.

In making "colors," salutes, etc., the Yacht should always represent the rank of the owner, whether he is on board or not.

In entering or leaving port before "colors" in the morning, or after "colors" at sunset, the ensign and distinguishing flags should be shown, and then hauled down on coming to anchor.

On Decoration Day and occasion of national mourning, only the ensign should be half-masted. In case of death of the owner of the yacht, the Club

World's Largest Selling 6-Cylinder Cars	
HUDSON-ESSEX	
COACH	COACH
\$1250	\$850
Freight and Tax Extra	
Aaron DeRoy Motor Car Co.	
Wholesale and Retail Salesrooms: Woodward at Garfield; Glen. 9520. Parts and Service: 481 Canfield Ave.	

flag and his private signal should be half-masted, but not the ensign.

When mourning is ordered for death of a club member, only the club flag should be half-masted.

Flags should be mastheaded, both before half-masting them and before hauling them down. Saluting with the ensign should be done by mastheading it first.

Flag officers should always fly their pennants while in commission.

Single-masted vessels should fly the private signal of the owner when under way, and when at anchor the Club flag.

When Squadrons of different clubs meet at sea, salutes should be exchanged by the commanding officers only.

Salutes from single Yachts at sea should be answered by the flagship only.

Yachts should always salute vessels of the United States Navy by dipping the ensign once.

Yachts passing one another should always exchange salutes by dipping the ensign once only, juniors saluting first. A yacht acting as judge's boat should not be saluted during a race.

A yacht, on withdrawing from any race, should at

Phone Nav. 2826

Phone Nav. 3857

The Watts-Suhrbier Company

GENERAL CONTRACTORS

1235 Miami Street

Toledo, Ohio

once lower its racing colors, and allow yachts still competing right of way.

A yellow and black flag borne quarterly will signify that the vessel has contagious disease on board and is to be avoided.

The International Code of Signals enables yachts to communicate with each other.

Flag "B," of the International Code of Signals, is used for a PROTEST FLAG, and is conspicuously displayed in the rigging of a yacht protesting during a race.

A single pennant representing the letter "S" is the signal of distress.

IN DRESSING SHIP the International Code may be used to advantage. Care being taken to have burgees, pennants and rectangular flags bent alternately. Hoist at the peak or staff of the Yacht ensign, and on the Jack staff hoist the Jack. Also arrange a rainbow of flags, reaching from the water line forward to the water line aft, by way of the jib boom end to foretop masthead, then across to main topmast, and down to main boom end, allowing several flags to touch the water line from both the jib boom end and the main boom end. To keep flags in position, a weight should be attached to the end of each line. Additional strings of flags may be used for display from each top masthead to the deck.

For Magneto and Auto Electric Repairing

see

THE ELECTRIC POWER MAINTENANCE CO.

1101 Monroe Street

Toledo, Ohio

POWER BOAT SPEED TABLE

Below we give a speed table for the benefit of judges of regatta committees and owners of high-speed motor boats. We hope it will be found useful and a time-saver in calibrating the speed of boats in competition and private trials.

Miles per Hour			Miles per Hour		
Time per Mile	min.	sec.	Time per Mile	min.	sec.
4.00	15	0	16.90	3	33
5.00	12	0	16.98	3	32
6.00	10	0	17.06	3	31
7.00	8	34	17.14	3	30
8.00	7	30	17.22	3	29
9.00	6	40	17.31	3	28
10.00	6	0	17.39	3	27
11.00	5	27	17.48	3	26
12.00	5	0	17.56	3	25
13.00	4	36	17.65	3	24
14.00	4	17	17.73	3	23
15.00	4	0	17.82	3	22
15.06	3	59	17.91	3	21
15.13	3	58	18.00	3	20
15.19	3	57	18.09	3	19
15.25	3	56	18.18	3	18
15.32	3	55	18.27	3	17
15.38	3	54	18.37	3	16
15.45	3	53	18.46	3	15
15.52	3	52	18.56	3	14
15.58	3	51	18.65	3	13
15.65	3	50	18.75	3	12
15.72	3	49	18.85	3	11
15.79	3	48	18.95	3	10
15.86	3	47	19.05	3	9
15.93	3	46	19.15	3	8
16.00	3	45	19.25	3	7
16.07	3	44	19.35	3	6
16.14	3	43	19.46	3	5
16.22	3	42	19.57	3	4
16.29	3	41	19.67	3	3
16.36	3	40	19.78	3	2
16.44	3	39	19.89	3	1
16.51	3	38	20.00	3	0
16.59	3	37	20.11	2	59
16.67	3	36	20.22	2	58
16.74	3	35	20.34	2	57
16.82	3	34	20.45	2	56

Miles per Hour			Miles per Hour		
Time per Mile	Time per Mile	Time per Mile	Time per Mile	Time per Mile	Time per Mile
20.57	2 min. 55 sec.	28.57	2 min. 6 sec.		
20.69	2 " 54 "	28.80	2 " 5 "		
20.81	2 " 53 "	29.03	2 " 4 "		
20.93	2 " 52 "	29.27	2 " 3 "		
21.05	2 " 51 "	29.51	2 " 2 "		
21.18	2 " 50 "	29.75	2 " 1 "		
21.30	2 " 49 "	30.00	2 " 0 "		
21.43	2 " 48 "	30.25	I " 59 "		
21.56	2 " 47 "	30.51	I " 58 "		
21.69	2 " 46 "	30.77	I " 57 "		
21.82	2 " 45 "	31.03	I " 56 "		
21.95	2 " 44 "	31.30	I " 55 "		
22.08	2 " 43 "	31.58	I " 54 "		
22.22	2 " 42 "	31.86	I " 53 "		
22.36	2 " 41 "	32.14	I " 52 "		
22.50	2 " 40 "	32.43	I " 51 "		
22.64	2 " 39 "	32.73	I " 50 "		
22.78	2 " 38 "	33.03	I " 49 "		
22.93	2 " 37 "	33.33	I " 48 "		
23.08	2 " 36 "	33.64	I " 47 "		
23.23	2 " 35 "	33.96	I " 46 "		
23.38	2 " 34 "	34.29	I " 45 "		
23.53	2 " 33 "	34.62	I " 44 "		
23.68	2 " 32 "	34.95	I " 43 "		
23.84	2 " 31 "	35.29	I " 42 "		
24.00	2 " 30 "	35.64	I " 41 "		
24.16	2 " 29 "	36.00	I " 40 "		
24.32	2 " 28 "	36.36	I " 39 "		
24.49	2 " 27 "	36.73	I " 38 "		
24.66	2 " 26 "	37.11	I " 37 "		
24.83	2 " 25 "	37.50	I " 36 "		
25.00	2 " 24 "	37.89	I " 35 "		
25.17	2 " 23 "	38.30	I " 34 "		
25.35	2 " 22 "	38.71	I " 33 "		
25.53	2 " 21 "	39.13	I " 32 "		
25.71	2 " 20 "	39.56	I " 31 "		
25.90	2 " 19 "	40.00	I " 30 "		
26.09	2 " 18 "	40.45	I " 29 "		
26.28	2 " 17 "	40.91	I " 28 "		
26.47	2 " 16 "	41.38	I " 27 "		
26.67	2 " 15 "	41.86	I " 26 "		
26.87	2 " 14 "	42.35	I " 25 "		
27.07	2 " 13 "	42.86	I " 24 "		
27.27	2 " 12 "	43.37	I " 23 "		
27.48	2 " 11 "	43.90	I " 22 "		
27.69	2 " 10 "	44.44	I " 21 "		
27.91	2 " 9 "	45.00	I " 20 "		
28.12	2 " 8 "	45.57	I " 19 "		
28.35	2 " 7 "	46.15	I " 18 "		

Miles per Hour			Miles per Hour		
Time per Mile	Time per Mile	Time per Mile	Time per Mile	Time per Mile	Time per Mile
46.75	I min. 18 sec.	64.28	0 min. 56 sec.		
47.37	I " 16 "	65.45	0 " 55 "		
48.00	I " 15 "	66.66	0 " 54 "		
48.65	I " 14 "	67.92	0 " 53 "		
49.31	I " 13 "	69.22	0 " 52 "		
50.00	I " 12 "	70.58	0 " 51 "		
50.70	I " 11 "	72.00	0 " 50 "		
51.43	I " 10 "	73.46	0 " 49 "		
52.17	I " 9 "	75.00	0 " 48 "		
52.94	I " 8 "	76.59	0 " 47 "		
53.73	I " 7 "	78.25	0 " 46 "		
54.55	I " 6 "	80.01	0 " 45 "		
55.38	I " 5 "	81.81	0 " 44 "		
56.25	I " 4 "	83.71	0 " 43 "		
57.14	I " 3 "	85.71	0 " 42 "		
58.06	I " 2 "	87.79	0 " 41 "		
59.02	I " 1 "	90.00	0 " 40 "		
60.00	I " 0 "	92.30	0 " 39 "		
61.01	O " 59 "	94.73	0 " 38 "		
62.06	O " 58 "	97.29	0 " 37 "		
63.15	O " 57 "	99.99	0 " 36 "		

SHIPS BELLS

	Bell	1st Middle Morning		Forenoon Afternoon		1st D'g W'th	
		Watch	Watch	Watch	Watch	2nd D'g W'th	6 to 8
1		P. M.	A. M.	A. M.	A. M.	P. M.	P. M.
2		8:30	12:30	4:30	8:30	12:30	4:30
3		9:00	1:00	5:00	9:00	1:00	5:00
4		9:30	1:30	5:30	9:30	1:30	5:30
5		10:00	2:00	6:00	10:00	2:00	6:00
6		10:30	2:30	6:30	10:30	2:30	6:30
7		11:00	3:00	7:00	11:00	3:00	7:00
8		11:30	3:30	7:30	11:30	3:30	7:30
		12:00	4:00	8:00	12:00	4:00	8:00

BUILDERS OF FAST BOATS

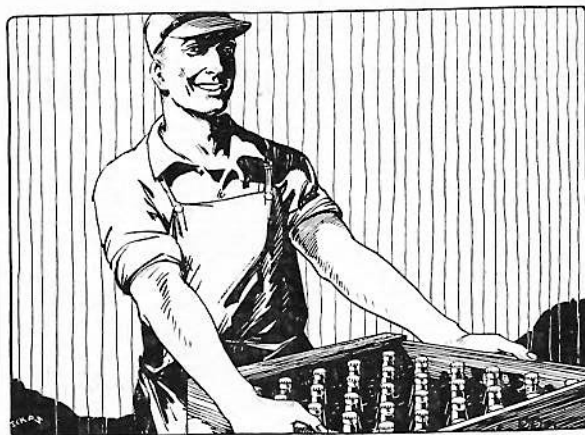
Up to 75 feet long

We feature our Famous 18-ft Mahogany Runabout
with 25 h. p. making over 20 M. P. H.

Write for prices

Sandusky Boat & Cabinet Works

Sandusky, Ohio



Take Plenty with you!

TAKE a half a dozen cases
if you've got the room.
You'll surely want more
and more of this New Process
Brew. It retains all the esters.

Great Stuff, boys

Order a case for
the cruise

The
Buckeye Producing
Company

Main 3406

Toledo, Ohio

Green Seal

New Process* Brew
*Retains all the Esters.

Inter-Lake Yachting Association

Organized January 17, 1885

CLUBS ENROLLED

Bay City Boat Club	Grosse Pointe Yacht Club
Bayview Yacht Club, Detroit	Lorain Power Boat Club
Bay View Yacht Club, Toledo	Maumee River Yacht Club
Buckeye Lake Yacht Club	Miss Detroit Power Boat Assn.
Buffalo Canoe Club	Monroe Yacht Club
Buffalo Launch Club	Ottawa River Yacht Club
Buffalo Yacht Club	Port Clinton Yacht Club
Cleveland Boat Club	Port Huron Yacht Club
Cleveland Yachting Club	Put-in-Bay Yacht Club
Corinthian Yacht Club, Cleveland	Riverside Boat Club, Lakewood
Country Club of Detroit	Riverside Boat Club, Toledo
Detroit Boat Club Yachtsmen	Sandusky Yacht Club
Detroit Yacht Club	Toledo Yacht Club
Edison Boat Club	Vermillion Boat Club
Erie Yacht Club	

PAST COMMODORES

*Geo. W. Gardner, C. Y. C.	1894
*John E. Gunckel, T. Y. C.	1895
*Geo. H. Worthington, C. Y. C.	1896
S. O. Richardson, Jr., T. Y. C.	1897
Alex I. McLeod, D. Y. C.	1898
*Geo. T. Bliss, E. Y. C.	1899
Geo. F. Anderson, S. Y. C.	1900
Wm. R. Huntington, S. Y. C.	1901
*C. C. Warren, S. Y. C.	1902
*Henry Tracy, T. Y. C.	1903
John H. Smedley, D. B. C. Y.	1904
*Geo. H. Worthington, C. Y. C.	1905
John F. Craig, T. Y. C.	1906
*Frank W. Fletcher, T. B. Y. A.	1907
*Geo. H. Worthington, C. Y. C.	1908
S. O. Richardson, Jr., T. Y. C.	1909
C. G. Jennings, C. C. of D.	1910
Alexander Winton, L. Y. C.	1911
Wm. R. Huntington, S. Y. C.	1912
*Geo. R. Worthington, C. Y. C.	1913
Henry W. Hess, T. Y. C.	1914
Harry C. Kendall, D. Y. C.	1915
Emil G. Schmidt, S. Y. C.	1916
Alexander Winton, C. Y. C.	1917
Wm. R. Huntington, S. Y. C.	1918
R. George Marsh, G. P. Y. C.	1919
F. W. Wakefield, V. B. C.	1920
F. W. Roberts, C. Y. C.	1921
C. W. Kotcher, D. Y. C.	1922
Sidney Frohman, S. Y. C.	1923
Otto F. Barthel, D. Y. C.	1924

*Deceased.

TABLE OF BOAT SPEED PER MILES PER HOUR—Formula .00947 constant x pitch x revolutions

R. P. M.	Per Cent of Slip	PITCH OF PROPELLER IN INCHES																SPEED LIMIT		
		14"	15"	16"	18"	20"	22"	24"	26"	28"	30"	33"	36"	40"	45"	50"	55"	60"	Miles Per Hour	Minutes Per Mile Second
400	None	5.30	6.66	6.82	7.58	8.33	9.08	9.85	10.61	11.36	12.50	13.63	15.15	17.05	18.94	20.83	22.72	8	7.30	11
	10%	4.77	5.45	6.14	6.82	7.50	8.18	8.87	9.55	10.22	11.25	12.27	13.63	15.34	17.05	18.75	20.44	10	6.	14
	20%	4.24	4.85	5.45	6.06	6.66	7.27	7.88	8.49	9.09	10.00	10.90	12.12	13.64	15.15	16.67	18.18	12	5.	17
600	None	3.71	4.24	4.77	5.30	5.83	6.36	6.89	7.43	7.95	8.75	9.54	10.61	11.93	13.26	14.59	16.01	16	3.45	21
	10%	7.96	9.09	10.23	11.36	12.50	13.64	14.77	15.91	17.05	18.75	20.46	22.73	25.57	28.41	31.20	34.08	18	3.30	26
	20%	7.16	8.18	9.20	10.22	11.25	12.27	13.29	14.32	15.34	16.87	18.11	20.46	23.01	25.57	28.08	30.68	20	3.	29
800	None	6.37	7.27	8.18	9.09	10.00	10.91	11.82	12.73	13.64	14.54	15.44	16.34	17.24	18.14	19.04	19.94	22	2.43	32
	10%	5.57	6.36	7.16	7.95	8.75	9.54	10.34	11.14	11.93	13.13	14.32	15.91	17.90	19.89	21.84	23.87	24	2.30	35
	20%	10.61	12.12	13.64	15.15	16.67	18.18	19.70	21.21	22.73	25.00	27.27	30.30	34.09	37.88	41.66	45.44	26	2.18	37
1000	None	9.55	10.91	12.27	13.63	15.00	16.36	17.73	19.09	20.46	22.19	24.34	27.27	30.68	34.09	37.50	40.72	30	2.	44
	10%	8.49	9.70	10.91	12.12	13.34	14.54	15.75	16.97	18.18	20.01	21.82	24.24	27.27	30.30	33.33	36.36	35	1.7	50
	20%	7.43	8.48	9.54	10.61	11.67	12.73	13.79	14.85	15.91	17.50	19.09	21.21	23.86	26.52	29.17	31.67	40	1.5	58
1500	None	13.26	15.15	17.05	18.94	20.83	22.73	24.62	26.52	28.41	31.25	34.09	37.88	42.62	47.35	52.08	56.82	45	1.33	65
	10%	11.93	13.63	15.34	17.05	18.75	20.46	22.16	23.87	25.57	28.12	30.68	34.09	38.36	42.61	47.88	53.14	50	1.09	79.7
	20%	9.28	10.61	11.93	13.26	14.58	15.91	17.23	18.57	19.89	21.88	23.86	26.52	29.83	33.15	36.46	39.78	60	1.	88

A Propeller Wheel of any diameter with 30 inches pitch at 800 R. P. M. allowing 10% slip, should make 20.46 miles per hour. See Table.
NOTE:—If you want to know the speed at 1200 revolutions, double the 600 column. 500 revolutions would be one-half the 1000 rev. column.

PUT-IN-BAY
AUTO FERRY
 CATAWBA ISLAND
 —TO—
 PUT-IN-BAY ISLAND

DAILY SCHEDULE

June 27th to September 7th, 1925

Leave Catawba

10:30 A. M., 2:15 and 6:00 P. M.

Leave Put-in-Bay

* 9:00 A. M., 12:45 and 4:30 P. M.

* Monday Morning 7:00

Capacity of the New Ferry

18 Automobiles

100 Passengers

A SUMMER HOME AFLOAT

MATTHEWS "38"
 STOCK CRUISER



THE MATTHEWS COMPANY
 PORT CLINTON, OHIO

Compliments of



We Specialize in
Loving Cups

and other

Trophies

Particularly for Yachting

**THE W. F. BROER
COMPANY**
JEWELERS

Adams and Superior Sts.

TOLEDO,

OHIO

WALTER MAC KITRICK & CO.

NURSERYMEN - LANDSCAPE

ARTISTS

814 SPITZER BLDG. PHONE ADAMS 5702

TOLEDO, OHIO

The HARRISON "32"

IS A REAL DOUBLE CABIN CRUISER



Rich Mahogany Cabinet Work; Roomy Cabins, sleep six persons; six feet Headroom in Forward Cabin; Large convenient Galley; plenty of Locker space; comfortable Bridge Deck; wonderfully Staunch and Seaworthy. A demonstration will prove their superiority.

R. W. HARRISON BOAT WORKS

Established 1897 Office: 3828 Summit TOLEDO, OHIO

SPRINGS

A complete Automobile Spring Service
for any make of Passenger Car or Truck

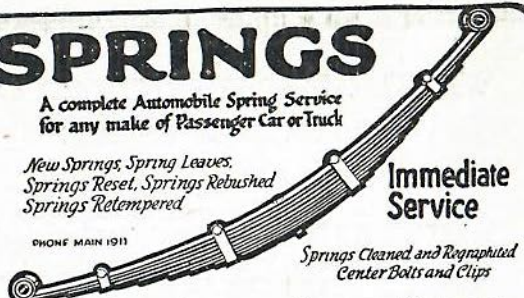
*New Springs, Spring Leaves,
Springs Reset, Springs Rebrushed,
Springs Retempered*

**Immediate
Service**

*Springs Cleaned and Regraptid
Center Bolts and Clips*

PHONE MAIN 1911

PERFECTION SPRING SERVICE STATION
MONROE AND FIFTEENTH STREETS




Established
1840. The
Marine Supply
Headquarters
for 85 years.

GEO. B. CARPENTER & Co.
YACHT SAILS

and

RIGGING

Wamsutta Egyptian Duck
Combed Sea Island Duck
Balloon Silk

Linen Yacht Rope
Yacht Manila
Airplane Wire

MARINE SUPPLIES

440 North Wells Street, Chicago

Every Interlake Yachts-
man needs a copy of our
1925 Marine Catalog.
Write for your copy.

