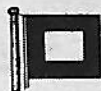




GEO. KOCH

OFFICIAL PROGRAM OF THE 1946 **ILYA**
PUT-IN-BAY AUGUST 11-15

THE PILOT CLASS



CLASS INSIGNIA

THE FIRST of a fleet of ten Pilot-class
auxiliary sloops we are building
from Sparkman & Stephens plans . . . as
exclusive Great Lakes builders . . .

32 ft. 11 inches O.A.

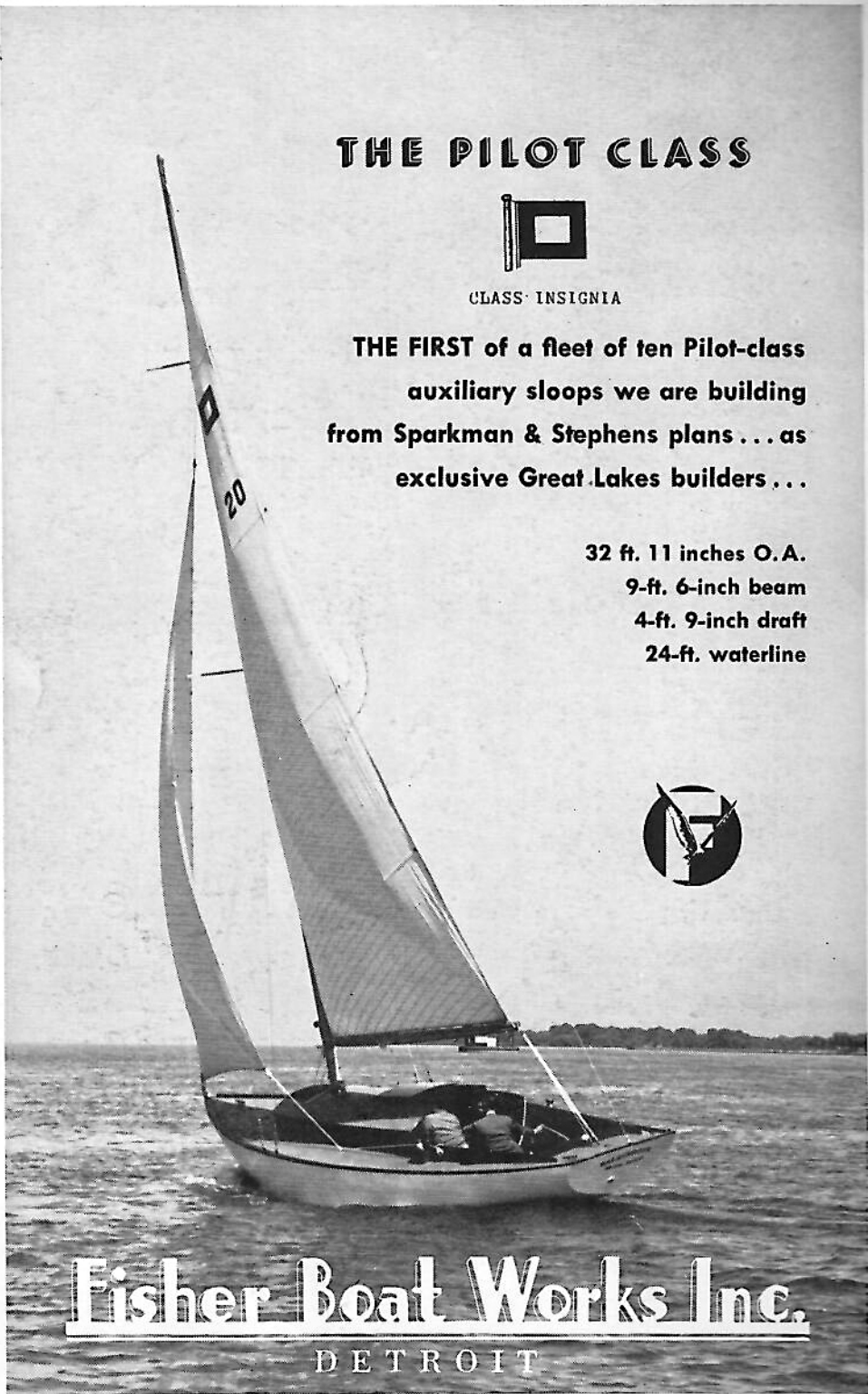
9-ft. 6-inch beam

4-ft. 9-inch draft

24-ft. waterline



Fisher Boat Works Inc.
DETROIT





Commodore LESTER R. MYLANDER
Inter-Lake Yachting Association
1946

INDEX

	<i>Page</i>		<i>Page</i>
Advisory Committee	6	Perry Victory Memorial.....	45
Association Membership	3	Racing Rules for Sail Yachts.....	22-23
Committees	6-8-10	Sail Yacht Course.....	21
General Information	14	Sail Yacht Program.....	19
Memorial Trophies	48	Sea Scouts	6
Method of Scoring Points.....	20	Starting Line	20
Officers, Delegates and Trustees.....	6	Starting Time—Sail Yachts.....	19
Official Program	18-19	Yachtsmen's Fund	52
Past Commodores	3		

ADVERTISEMENT INDEX

	<i>Page</i>		<i>Page</i>
Adams, Billy	50	Klein Steel Co.	36
American Crayon	46	Kuttkuhn, Printer	44
Barthel, O. E.	20	Lakeside Yacht Club	40
Bayview Yacht Club	45	Liggett Boat Works	50
Biro Manfg. Co.	15	Lonz, Geo. F.	48
Berry Bros.	38	Lyman Boat Works	37
Broer-Freeman Co.	24	Matthews Co.	39
Brown's Inc.	44	Michigan Steel Casting Co.	28
Cedar Point	28	Miller Boat Livery	44
Central Boiler Mfg. Co.	40	Motor Specialties Corp.	49
Chris Craft	9	New Departure, Gen. Motors Div.	47
Chrysler Motor	43	Park Hotel	40
Cleveland Yachting Club	25	Put-In-Bay Yacht Club	33
Craine-Schrage Steel Div.	13	Sandusky Boat Works	30
Crescent Hotel	30	Sandusky Sailing Club	34
Detroit Recreation	34	Sandusky Yacht Club	31
Detroit Yacht Club	30	Schnoor & Fuchs	50
DeVilbiss Co.	46	Seitz State Theatre	28
Douglass McLeod, Inc.	28	Smith Co., H. H.	36
Edgewater Yacht Club, Inc.	38	Smith's Deck, Jim	50
Engels & Krudwig Wine Co.	32	Stroh Brewing Co.	24
Fisher Boat Works	<i>Front Cover</i>	Teal Co., Frank C.	20
Gallup & Sons, M. N.....	16	Ten Friends	<i>Back Cover</i>
Gardeila Co., Geo. A.	17	Ten More Friends	51
G & C Foundry Co.	41	Toledo Yacht Club	44
Gray Marine Motor Co.	36	Turner, Geo. H.	16
Gregory Boat Co.	12	Union Chain Manfg. Co.	<i>Back Cover</i>
Grosse Isle Yacht Club	12	Urschel, J. J.	42
Grosse Pointe Yacht Club	41	Wakefield, A. F.	40
Hacker Boat Co.	50	Webster, Roy	16
Hinde & Dauche Co.	12	Western Cartridge Co.	24
Hommel Co.	14	Wilson Eng. Co., Inc.	42
Jacobs Co., F. L.	35	Wolfe Industries	7
Jim's Place	43	Yachtsmen's Fund	52
Kasco Mills	32	Zehner Packing Co.	36
Kermath Mfg. Co.	34		

MEMBER OF

Yacht Racing Union of the Great Lakes
 North American Yacht Racing Union
 Star Class Yacht Racing Association
 American Power Boat Association

ASSOCIATION MEMBERSHIP

- Ashtabula Yacht Club, Ashtabula, Ohio
 Bayview Yacht Club, Detroit, Michigan
 Bay View Yacht Club, Toledo, Ohio
 Buckeye Lake Yacht Club, Columbus, Ohio
 Buffalo Canoe Club, Buffalo, New York
 Chagrin Lagoons Yacht Club, Willoughby, Ohio
 Chippewa Yacht Club, Medina, Ohio
 Cleveland Yachting Club, Inc., Rocky River, Ohio
 Clinton River Boat Club, Mt. Clemens, Michigan
 Conneaut Boat Club, Conneaut, Ohio
 Crescent Sail Yacht Club, Grosse Pointe, Michigan
 Detroit Boat Club, Detroit, Michigan
 Detroit Yacht Club, Detroit, Michigan
 Devils Lake Yacht Club, Manitou Beach, Michigan
 Edgewater Yacht Club, Inc., Cleveland, Ohio
 Edison Boat Club, Detroit, Michigan
 Erie Yacht Club, Erie, Pennsylvania
 Forest City Yacht Club, Cleveland, Ohio
 Fremont Yacht Club, Fremont, Ohio
 Gordon Shore Boat Club, Inc., Cleveland, Ohio
 Grand River Yacht Club, Fairport Harbor, Ohio
 Grosse Isle Yacht Club, Grosse Isle, Michigan
 Grosse Pointe Club, Grosse Pointe, Michigan
 Grosse Pointe Yacht Club, Grosse Pointe Shores, Michigan
 Lakeside Yacht Club, Inc., Cleveland, Ohio
 Leatherlips Yacht Club, Columbus, Ohio
 Lorain Yacht Club, Lorain, Ohio
 Maumee River Yacht Club, Toledo, Ohio
 Mentor Harbor Yacht Club, Mentor, Ohio
 Mohican Sailing Club, Mansfield, Ohio
 Monroe Boat Club, Monroe, Michigan
 North Shore Yacht Club, Mt. Clemens, Michigan
 Oakland County Boat Club, Pontiac, Michigan
 Ottawa River Yacht Club, Toledo, Ohio
 Perrysburg Boat Club, Perrysburg, Ohio
 Port Clinton Yacht Club, Port Clinton, Ohio
 Port Huron Yacht Club, Port Huron, Michigan
 Portage Lake Yacht Club, Akron, Ohio
 Put-in-Bay Yacht Club, Put-in-Bay, Ohio
 Saginaw Bay Yacht Club, Bay City, Michigan
 Sandusky Sailing Club, Sandusky, Ohio
 Sandusky Yacht Club, Sandusky, Ohio
 Sarnia Yacht Club, Sarnia, Ontario
 South Shores Yacht Club, Akron, Ohio
 St. Clair Boat Club, St. Clair, Michigan
 St. Clair Yachtsmen, Detroit, Michigan
 Toledo Sailing Club, Toledo, Ohio
 Toledo Yacht Club, Toledo, Ohio
 Vermilion Boat Club, Vermilion, Ohio
 Vermilion Yacht Club, Vermilion, Ohio
 Westlake Yacht Club, Cleveland, Ohio
 White City Yacht Club, Cleveland, Ohio
 Windsor Yacht Club, Windsor, Ontario

PAST COMMODORES

- | | |
|--|--|
| *George W. Gardner, C.Y.C.....1894 | *F. W. Wakefield, V.B.C.....1920 |
| *John E. Gunckel, T.Y.C.....1895 | *F. W. Roberts, C.Y.C.....1921 |
| *Geo. H. Worthington, C.Y.C.....1896 | *C. W. Kotcher, D.Y.C.....1922 |
| *S. O. Richardson, T.Y.C.....1897 | Sidney Frohman, S.Y.C.....1923 |
| *Alex I. McLeod, D.Y.C.....1898 | *Otto F. Barthel, D.Y.C.....1924 |
| *Geo. T. Bliss, E.Y.C.....1899 | *Thos. A. DeVilbiss, T.Y.C.....1925 |
| *Geo. F. Anderson, S.Y.C.....1900 | *A. A. Schantz, D.Y.C.....1926 |
| *Wm. R. Huntington, S.Y.C.....1901 | *Dr. W. A. Wilson, B.Y.C., Detroit..1927 |
| *C. C. Warren, S.Y.C.....1902 | E. H. Reed, T. Y. C.....1928 |
| *Henry Tracy, T.Y.C.....1903 | Mark R. Hanna, D.Y.C.....1929 |
| John S. Smedley, D.B.C.....1904 | E. E. Noble, C.Y.C.....1930 |
| *George H. Worthington, C.Y.C.....1905 | A. F. Wakefield, V.B.C.....1931 |
| John F. Craig, T.Y.C.....1906 | J. W. Vaughan, D.B.C.....1932 |
| *Frank W. Fletcher, T.B.Y.A.....1907 | *C. O. Miniger, T.Y.C.....1933 |
| *Geo. H. Worthington, C.Y.C.....1908 | Stanley Gardner, C.Y.C.....1934 |
| *S. O. Richardson, T.Y.C.....1909 | Gar Wood, D.Y.C.....1935 |
| *C. G. Jennings, C.C. of D.....1910 | Rudolph A. Luedtke, T.Y.C.....1936 |
| *Alexander Winton, L.Y.C.....1911 | Edgar T. Wolfe, B.L.Y.C.....1937 |
| *Wm. R. Huntington, S.Y.C.....1912 | Wilbur J. Wright, C.Y.C.....1938 |
| *Geo. H. Worthington, C.Y.C.....1913 | *Andrew R. Hackett, D.Y.C.....1939 |
| Henry W. Hess, T.Y.C.....1914 | *Joseph W. Harbrecht, S.Y.C.....1940 |
| Harry C. Kendall, D.Y.C.....1915 | J. J. Urschel, T.Y.C.....1941 |
| *Emil G. Schmidt, S.Y.C.....1916 | Howard A. Finch, C.S.Y.C.....1942 |
| *Alexander Winton, C.Y.C.....1917 | Milton N. Gallup, C.Y.C.....1943 |
| *Wm. R. Huntington, S.Y.C.....1918 | Joseph F. Nagel, E.B.C.....1944 |
| *R. George Marsh, G.P.Y.C.....1919 | James A. Beidler, Jr., T.Y.C.....1945 |
| *Deceased | |



EDGAR W. KIEFER, P.H.Y.C.
Vice Commodore



HARRY C. KENDALL, D.Y.C.
Secretary-Treasurer



GEORGE MICHAUX, S.Y.C.
Fleet Captain

ALEXANDER WINTON, JR., C.Y.C.
Rear Commodore



STANLEY W. PUDDIFORD, C.S.Y.C.
Chairman Race Committee

DR. WM. F. BURGER, S.Y.C.
Fleet Surgeon



PRESENT OFFICERS

Lester R. Mylander, S.Y.C.Commodore
Edgar W. Kiefer, P.H.Y.C.Vice Commodore
Alexander Winton, Jr., C.Y.CRear Commodore
Harry C Kendall, D.Y.C.Secretary-Treasurer and
Recording Secretary
Dr. Wm. F. Burger, S.Y.C.Fleet Surgeon
George Michaux, S.Y.C.Fleet Captain
Frank F. White, M.H.Y.C.Sail Yacht Measurer
Wm. H. Miller, V.Y.C.Power Boat Measurer

DELEGATES

AMERICAN POWER BOAT ASSOCIATION (3)

Leonard H. Thompson, D.Y.C.
J. G. Robinson, V.Y.C. Wm. E. Lyman, S.Y.C.

YACHT RACING UNION OF THE GREAT LAKES

Commodore Alex. Winton, Jr., '46, C.Y.C.
Com. Dan K. MacBride, '48, P.L.Y.C. Com. S. W. Puddiford, '47, C.S.Y.C.

NORTH AMERICAN YACHT RACING UNION (3)

Commodore R. A. St. John, '47, D.Y.C.
Com. E. W. Kiefer, '46, P.H.Y.C. Com. C. F. Stewart, '48, M.H.Y.C.

I. L. Y. A TRUSTEES (3)

Commodore W. J. Wright, '48, V.Y.C.
Com. J. A. Summerlee, '46, D.Y.C. Com. Lee Miller, '47, P.I.B.Y.C.

ADVISORY COMMITTEE

Commodore James A. Beidler, Jr., T.Y.C.
Commodore John S. Smedley, D.B.C. Commodore Stanley Gardner, C.Y.C.
Commodore John F. Craig, T.Y.C. Commodore Gar Wood, D.Y.C.
Commodore Henry W. Hess, T.Y.C. Commodore R. A. Luedtke, T.Y.C.
Commodore Harry C. Kendall, D.Y.C. Commodore Edgar T. Wolfe, B.L.Y.C.
Commodore Sidney Frohman, S.Y.C. Commodore Wilbur J. Wright, C.Y.C.
Commodore E. H. Reed, T.Y.C. Commodore J. J. Urschel, T.Y.C.
Commodore Mark R. Hanna, D.Y.C. Commodore H. A. Finch, C.S.Y.C.
Commodore E. E. Noble, C.Y.C. Commodore Milton N. Gallup, C.Y.C.
Commodore A. F. Wakefield, V.B.C. Commodore Joseph F. Nagel, E.B.C.
Commodore J. W. Vaughan, D.B.C.

NOMINATING COMMITTEE

Commodore J. A. Summerlee, D.Y.C., Chairman
Commodore George Michaux, S.Y.C. Commodore K. N. Vance, C.S.Y.C.
Commodore A. J. Doyle, F.C.Y.C. Commodore Oscar A. H. Netchke, L.Y.C.

OFFICERS OF YACHTSMEN'S FUND

Commodore A. F. Wakefield, V.B.C., Chairman
Commodore E. V. Seitz, Secretary-Treasurer, S.Y.C.
Commodore Harry Austin, D.B.C. Commodore E. H. Reed, T. Y. C.
Commodore Sidney Frehman, S.Y.C. Warren K. Roberts, C.Y.C.
Commodore D. K. MacBride, P.L.Y.C. Commodore E. T. Wolfe, B.L.Y.C.
Commodore J. F. Nagel, E.B.C. Commodore W. J. Wright, V.Y.C.

A meeting of the Trustees of the Yachtsmen's Fund will be held at
Frohman Lodge on Sunday, August 11th, at 3:30 P. M.

Sea Scouts from the Detroit Area Council Boy Scouts of America
will again be with us at Put-in-Bay.



They will have a detail on duty at Headquarters at all times to help
make your stay at Put-in-Bay enjoyable. Advise the Secretary if you
need their services.



Compliments

**WOLFE
INDUSTRIES**

Columbus, Ohio



New 27-ft. Super De Luxe Enclosed Chris-Craft Cruiser

Every fleeting moment afloat is fun with a new Chris-Craft 27-ft. Super De Luxe Enclosed Cruiser. Large, light, airy cabin with built-in helmsman's seat . . . convenient dinette which converts into a double bed . . . starboard seat that forms upper and lower berths . . . clever compact galley . . . big aft cockpit for sight-seeing or sun-bathing . . . wide cruising radius with a range of speeds to

24 m.p.h. All built into a husky hull by Chris-Craft. To go places and do things in a big way on the water, visit your Chris-Craft Dealer now. Get full details on this and other new Chris-Craft.

They are coming off our production lines in ever-increasing quantities. See your Chris-Craft Dealer today and buy now to insure a more favorable delivery position.

Command your own

Chris-Craft

CHRIS-CRAFT CORP., ALGONAC, MICH.

WORLD'S LARGEST BUILDERS OF MOTOR BOATS

ENTERTAINMENT COMMITTEE

H. H. King, S.Y.C., Chairman
Commodore R. G. Sloat, S.Y.C., In Charge of Baseball
Commodore W. G. Pfefferhorn, S.Y.C., In Charge of Bowling
Chick Linker, P.B.Y.C. *Commodore* C. M. Mouch, S.Y.C.
Commodore Reed E. Brinker, S.S.C. Fred E. Wiehm, S.Y.C.
Commodore John C. Hurrell, E.Y.C. Keith F. Smith, S.C.B.C.
Commodore P. M. Patterson, S.B.Y.C. *Commodore* John G. Lee, W.C.Y.C.

LADIES' ENTERTAINMENT COMMITTEE

Mrs. Lester R. Mylander, S.Y.C., Chairman
Mrs. Jas. A. Beidler, Jr., T.Y.C. Mrs. Frank L. Martin, E.B.C.
Mrs. W. J. Caldwell, S.S.C. Mrs. George Michaux, S.Y.C.
Mrs. James F. Flynn, S.Y.C. Mrs. Lee Miller, P.I.B.Y.C.
Mrs. Milton N. Gallup, C.Y.C. Mrs. Willard C. Pfefferhorn, S.Y.C.
Mrs. Harry C. Kendall, D.Y.C. Mrs. Stanley W. Puddiford, C.S.Y.C.
Mrs. Edgar W. Kiefer, P.H.Y.C. Mrs. Earl V. Seitz, S.Y.C.
Mrs. Herman H. King, S.Y.C. Mrs. K. W. Vance, C.S.Y.C.
Mrs. Dan W. Krug, C.L.Y.C. Mrs. Fred E. Wiehm, S.Y.C.
Mrs. Carl F. Lamarche, T.Y.C. Mrs. Alex Winton, Jr., C.Y.C.
Mrs. Dan K. MacBride, P.L.Y.C. Mrs. Wilbur J. Wright, V.Y.C.

AVIATION COMMITTEE

Walter X. Brennan, B.Y.C., Chairman
Commodore Jas. F. Flynn, S.Y.C. Don Wallace, T.Y.C.
Rex B. Jacobs, G.P.Y.C. R. S. VanPelt, D.Y.C.

TROPHY COMMITTEE

Commodore Sheldon L. Rowland, S.S.C., Chairman
Commodore Gene Perry, S.S.C. *Commodore* Edwin Russell, S.S.C.
Walter Caldwell, S.S.C. Eugene Wiegand, S.S.C.

PROGRAM COMMITTEE

Commodore H. C. Kendall, D.Y.C., Chairman
Commodore James F. Flynn, S.Y.C. P. C. Darnell, D.Y.C.

FLEET COURTESY COMMITTEE

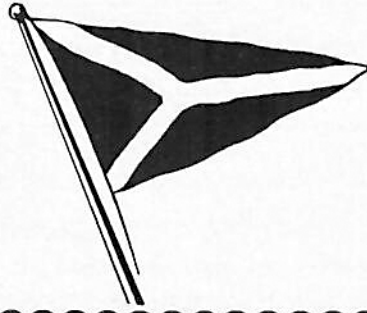
James A. Paulos, Chairman
Raymond Whitman Homer Stoeber
Frank Fuchs Fred Cooper
Mickey Arndt

SHORE COURTESY COMMITTEE

George F. Lonz, P.I.B.Y.C., Chairman
Mayor Henry Fox Walter Smith
Nate H. Ladd Wm. B. Gruenke
Roy Webster Wm. Schnoor
W. Adams R. C. Linker

SAIL YACHT COURSE PATROL COMMITTEE

Lieut.-Commander W. L. James, C.Y.C., Chairman
Commodore James A. Hirshfield, U. S. Coast Guard
Commodore J. Ray Davis, C.Y.C. *Commodore* T. M. Steinhart, C.Y.C.
Commodore Oscar A. Netschke, L.Y.C. *Commodore* A. E. Hermans, T.Y.C.
Commodore A. F. Wakefield, V.B.C. Chas. C. Walsh, D.Y.C.



In Memory of Our Past Commodores

GEO. W. GARDNER, C.Y.C.

Commodore 1894—Died Dec. 18, 1911

JOHN E. GUNCKEL, T.Y.C.

Commodore 1895—Died Aug. 8, 1916

GEO. H. WORTHINGTON, C.Y.C.

Commodore 1896, 1905, 1908, 1913
Died Jan. 9, 1924

S. O. RICHARDSON, JR., T.Y.C.

Commodore 1897, 1909
Died May 4, 1927

ALEX I. McLEOD, D.Y.C.

Commodore 1898—Died Aug. 20, 1930

GEO. T. BLISS, E.Y.C.

Commodore 1899—Died Nov. 1, 1924

GEO. F. ANDERSON, S.Y.C.

Commodore 1900—Died Aug. 10, 1937

WM. R. HUNTINGTON, S.Y.C.

Commodore 1901, 1912, 1918
Died April 15, 1927

C. C. WARREN, S.Y.C.

Commodore 1902—Died Mar. 22, 1905

HENRY TRACY, T.Y.C.

Commodore 1903—Died Jan. 19, 1904

FRANK W. FLETCHER, T.B.Y.A.

Commodore 1907—Died Dec. 12, 1922

C. G. JENNINGS, C.C. of D.

Commodore 1910—Died Jan. 9, 1936

ALEXANDER WINTON, C.Y.C.

Commodore 1911, 1917
Died June 21, 1932

EMIL G. SCHMIDT, S.Y.C.

Commodore 1916—Died Jan. 4, 1939

R. GEORGE MARSH, G.P.Y.C.

Commodore 1919—Died Apr. 18, 1937

F. W. WAKEFIELD, V.B.C.

Commodore 1919—Died June 4, 1934

F. W. ROBERTS, C.Y.C.

Commodore 1921—Died Mar. 1, 1929

C. W. KOTCHER, D.Y.C.

Commodore 1922—Died Dec. 16, 1933

OTTO F. BARTHEL, D.Y.C.

Commodore 1924—Died Sept. 12, 1941

THOS. A. DeVILBISS, T.Y.C.

Commodore 1925—Died Nov. 12, 1928

A. A. SCHANTZ, D.Y.C.

Commodore 1926—Died Jan. 28, 1934

WM. A. WILSON, B.Y.C.

Commodore 1927—Died Nov. 15, 1941

C. O. MINIGER, T.Y.C.

Commodore 1933—Died Apr. 22, 1944

ANDREW R. HACKETT, D.Y.C.

Commodore 1939—Died Nov. 16, 1943

J. W. HARBRECHT, S. Y. C.

Commodore 1940—Died Oct. 11, 1941

GREGORY BOATS

Detroit

CHRIS-CRAFT • MATTHEWS • THOMPSON • OLD TOWN • KERMATH MOTORS
U.S. GENERATORS • MARINE HARDWARE • BOAT SUPPLIES
PROPELLERS • ELECTRIC TOILETS • RADIO TELEPHONES

Covered & open boat Wells • Winter & Summer Storage • Service & Repairs

GREGORY BOAT COMPANY
1327 E. Jefferson

GREGORY MARINE
SUPPLY CO.

GREGORY MARINA
Ft. Clairpointe

REG. U. S. PAT. OFF.



CORRUGATED SHIPPING BOXES
AND
CORRUGATED PRODUCTS

THE HINDE & DAUCH PAPER COMPANY

SIDNEY FROHMAN, *President and General Manager*

*General Offices, SANDUSKY, OHIO. Factories in: BALTIMORE,
BOSTON — BUFFALO — CHICAGO — CLEVELAND — DETROIT
GLOUCESTER, N. J.—HOBOKEN—KANSAS CITY—LENOIR, N.C.
MONTREAL—MUNCIE, IND.—RICHMOND—SANDUSKY, OHIO
ST. LOUIS — TORONTO*

*Yachtsmen are invited to stop over on the way to the
Put-in-Bay Regatta and on their return.*



GROSSE ISLE YACHT CLUB

CRASCO STEELS



LARGE WAREHOUSE STOCKS PROVIDE *Prompt, Efficient* SERVICE

Don't be surprised if you get faster-than-expected delivery service from us. That happens in a great many cases, due to the unusually complete inventories carried in our big warehouse at all times. "Crasco" Steels will meet your specifications; Craine-Schrage Service will dovetail into your time schedule. This time, call Tyler 5-7212.

DISTRIBUTORS OF

Cold Rolled Strip Steel—All Tempers
Tool Steel in Bars and Billets
Carbon and Alloy Steels, Cold Finished and Hot Rolled
Rough Turned Bars—Drill Rod—Wire Rope

CRANE-SHRAGE STEEL DIVISION

DETROIT STEEL CORPORATION

8701 EPWORTH BLVD., DETROIT 4, MICH.

General Information

Headquarters: Put-In-Bay Yacht Clubhouse

Secretary-Treasurer's Office Hours: 8:00 A.M. to 4:00 P.M.

All yachtsmen and their ladies must register and present club membership cards.

All yachtsmen of the Inter-Lake and invited clubs, whether yacht owners or not, are invited and urged to participate in all of the events of the regatta and have their ladies participate wherever possible, to make the regatta successful in every way.

Obtain entry blanks and racing information at Headquarters.

The races are open to every yacht which complies with the rules and which is regularly enrolled in any club in the Inter-Lake Yachting Association, Y.R.U., or which has been invited to participate in the races.

Every yacht should be measured by the measurer of its home club and measurer's certificate presented at time of filing entry.

An entry fee will be charged in all events.

Sign your entry and state clearly all answers to questions.

Get your entry in early to assist the committee.

Three or more entries must be received or an event will be cancelled.

Suitable Prizes will be awarded winning yachts.

All events of the regatta will be started on time. Be on your mark.

The official time used at meet will be Put-In-Bay Yacht Club time, according to clock at headquarters.

Postponements, changes in courses or events, results and all official announcements will be posted on the Bulletin Board at Headquarters. Watch it.

Guns must not be fired from any yacht other than official within one hour of the time of starting races, and not until after every yacht has crossed the finish line.

A color gun will be fired each day at 8 a.m. and at sunset. Yachtsmen are requested not to fire guns fifteen minutes before or after times set for color guns.

All vessels following the races must keep to leeward, and at such distance as not to interfere with the maneuvers of the competing yachts.

As important to Full Living

As a fair wind to the Yachtsman

HOMMEL'S UNEXCELLED CHAMPAGNES

The M. HOMMEL Co.

SANDUSKY, OHIO

SUCCESS

25th
Anniversary
1921 - 1946

TO THE

Inter-Lake Yachting Association

AND TO

Commodore Lester R. Mylander



Biro Manufacturing Company

Marblehead, Ohio

See . . .

ROY WEBSTER

NORTH CHANNEL CALLING

When in this cruising paradise
of the Great Lakes, visit —

Turner's

where many Yachtsmen make
their headquarters while cruising
the North Channel waters of
Lake Huron

Before
You Die,
Burn,
Blow
Away
or Sink



SEE MILT



530 Leader Bldg . Cleveland



FRUITS • VEGETABLES
POULTRY • SEA FOODS



DISTRIBUTED BY

GEORGE A. GARDELLA CO.

2032 HOWARD STREET, DETROIT 16, MICHIGAN

BRANCHES

FLINT • BATTLE CREEK • JACKSON
PORT HURON • TOLEDO
KALAMAZOO

OFFICIAL PROGRAM



SUNDAY, AUGUST 11

- Morning* 7:00 A.M. Mass at Mother of Sorrows Catholic Church
10:00 A.M. Mass at Mother of Sorrows Catholic Church
9:00 A.M. Services at St. Paul's Episcopal Church
8:00 A.M. to 8:00 P.M. Entries for all Sail Yacht Races
10:00 A.M. to 6:00 P.M. Registration at Headquarters
- Afternoon* 2:00 P.M. to 4:00 P.M. Reservations for Ladies Bridge
- Evening* 9:00 P.M. Fireworks Display

MONDAY, AUGUST 12

- Morning* 7:55 A.M. Sail Yacht Races
10:00 A.M. to 12:00 Noon. Reservations for Ladies Bridge
- Afternoon* 2:30 P.M. Soft Ball Game
- Evening* 7:00 P.M. Bowling Tournament at Colonial
8:00 P.M. Sandusky High School Band Concert

TUESDAY, AUGUST 13

- Morning* 7:55 A.M. Sail Yacht Races
- Afternoon* 2:30 P.M. Soft Ball Game
2:30 P.M. Ladies Bridge Party, Bay View Lawn
- Evening* 9:00 P.M. to 10:00 P.M. Commodore's Reception at Colonial. Informal
10:00 P.M. to 1:00 A.M. Entertainment and Dancing at Colonial. Informal. All I.L.Y.A. members and their guests are Welcome

WEDNESDAY, AUGUST 14

- Afternoon* 3:00 P.M. Ladies Cat Boat Races—Warning Gun

THURSDAY, AUGUST 15

- Morning* 7:55 A.M. Sail Yacht Races
- Afternoon* 1:00 P.M. Award of Trophies at the Club House

We are having a Carnival during the Entire Regatta

Starting Time—Sail Yachts



Monday, August 12; Tuesday, August 13; Thursday, August 15, 1946

	<i>Class</i>	<i>Starting Time</i>	<i>Signal</i>
No. 3 12 Nautical Miles Time Limit 6 hours	8 Metre (International)	8:15 A.M.	Red Cylinder
	"R" Sloops Universal	8:20 A.M.	Red Cylinder
	6 Metre (International)	8:25 A.M.	Red Cylinder
	30 Square Metre	8:30 A.M.	Red Cylinder
	"A" Cruising Sloops and Cutters	8:35 A.M.	Red Cylinder
	"B" Cruising Sloops and Cutters	8:40 A.M.	Red Cylinder
	Star	8:45 A.M.	Red Cylinder
	L	8:50 A.M.	Red Cylinder
	C	8:55 A.M.	Red Cylinder
	Yawls	9:00 A.M.	Red Cylinder
	Schooner and Ketch	9:05 A.M.	Red Cylinder
	Universal	9:10 A.M.	Red Cylinder
No. 2 9 Statute Miles Time Limit 5 Hours	Thistle	9:15 A.M.	Red Cylinder
	International 14	9:20 A.M.	Red Cylinder
	International 21	9:25 A.M.	Red Cylinder
	Lightnings	9:30 A.M.	Red Cylinder
No. 1 4.5 Statute Miles Time Limit 5 hours	K (Privately Owned Catboats)	9:35 A.M.	Red Cylinder
	CK Team, (Club Owned Catboats)....	9:40 A.M.	Red Cylinder
	Club Sloops	9:45 A.M.	Red Cylinder
	Inter-Lake Sailing Class	9:50 A.M.	Red Cylinder
	Comet	9:55 A.M.	Red Cylinder
	National	10:00 A.M.	Red Cylinder
	Snipe	10:05 A.M.	Red Cylinder
Nippers	10:10 A.M.	Red Cylinder	
To be posted (See Bulletin Board)....	10:15 A.M.	Red Cylinder	

Note:—

"A" Cruising Sloops and Cutters rating 33 and over.

"B" Cruising Sloops and Cutters rating under 33.

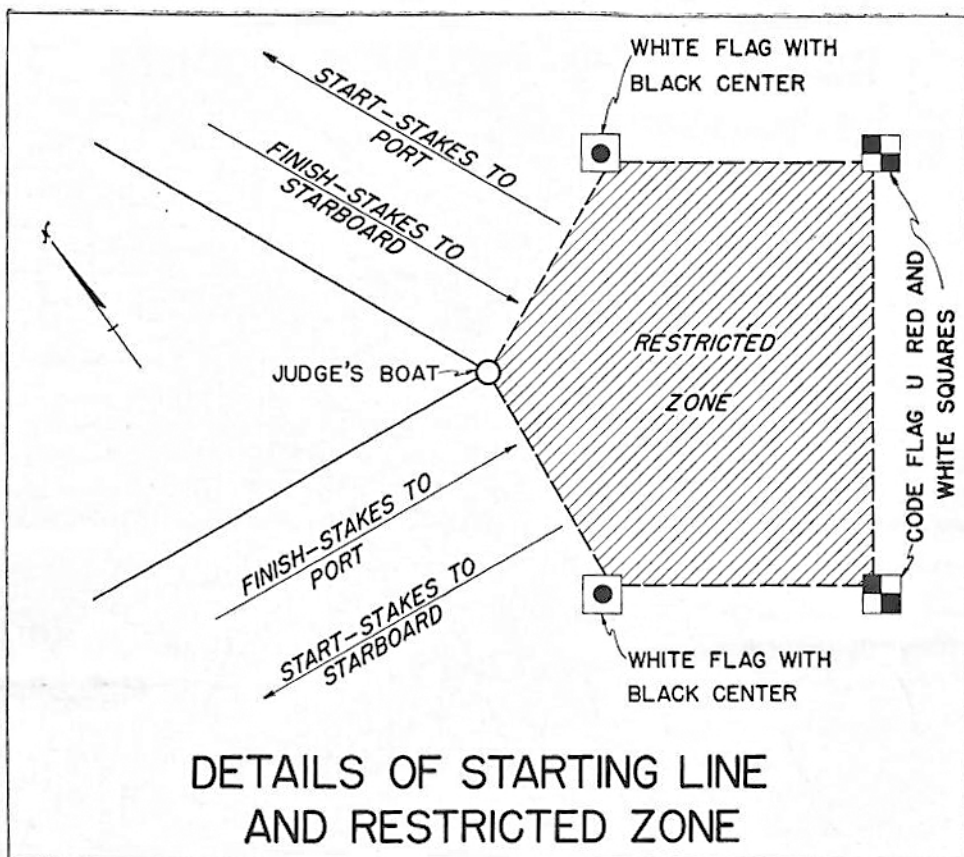
LADIES' CATBOAT RACE

Wednesday, August 14, 1946

Warning Gun:	3:00 P.M.	White Signal
Preparatory Gun:	3:10 P.M.	Blue Signal

STARTING TIME

CK Boats	3:15 P.M.	Red Signal
K Boats	3:20 P.M.	Red Signal



METHODS OF SCORING POINTS

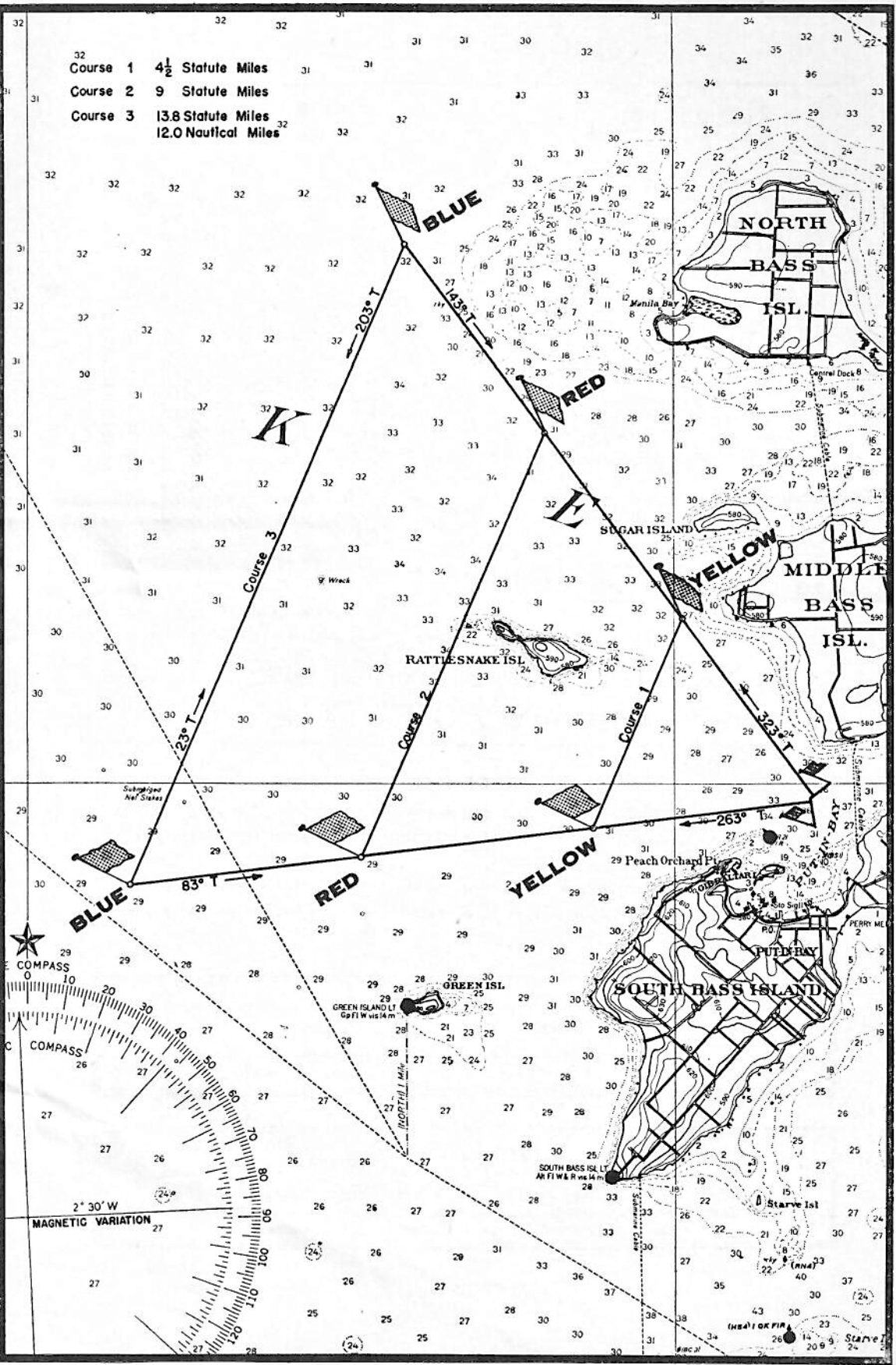
"Each yacht will be credited with as many points as the number of yachts she defeated, with one point added for starting. One-quarter ($\frac{1}{4}$) extra point is awarded the winner of each race."

"A yacht that starts and does not finish will not receive a point for starting, but will be counted as a defeated yacht in awarding points to the other yachts."

Compliments of
FRANK C. TEAL COMPANY
 G. E. Mazda Lamps and Electrical Supplies
 CA. 9860 • 425 Bates Street • Detroit 26, Mich.

2323 Dime Bldg. **OLIVER E. BARTHEL** Randolph 3267
 DYC LIFE MEMBER
CONSULTING MECHANICAL ENGINEER REG. NO. 783
*Inventions Developed and Special Machines Designed—General Mechanical
 and Automotive Design—Expert in Patent Causes*

- Course 1 4½ Statute Miles
- Course 2 9 Statute Miles
- Course 3 13.8 Statute Miles
12.0 Nautical Miles



Racing Rules for Sail Yachts



REQUIREMENTS FOR ENTRIES

All yachts must file entries with the Sail Yacht Regatta Committee before 8:00 p.m., Sunday, August 11th, unless a competing yacht is unable to arrive at Put-In-Bay by this time.

Entries in the Cruising classes must present measurement certificates in compliance with the Cruising Club of America Rule as set forth in the N.A.Y.R.U. Rule Book for 1941, and as adopted by the I.L.Y.A. in 1945. Dinghies need not be carried in twelve mile races.

Class Racing Yachts will be governed by, and must present measurement certificates in compliance with, the rules of their respective associations. Such certificates and/or other credentials must be presented at the time of filing entry.

The Regatta Committee reserves the right to order any yacht entered to be re-measured.

RACING RULES

All races will be sailed under N.A.Y.R.U. rules as amended to date, and such additional rules or changes prescribed herein or posted on the Headquarters Bulletin Board, which the Regatta Committee deems necessary for the successful conduct of the Racing Program.

Numbers must be carried by each yacht on each side of its mainsail. If numbers are not properly displayed, time will not be taken. Numbers carried on spinnakers and balloons will facilitate the work of the committee.

The time limit of all courses is shown with the schedule of starts on page 19.

Time allowance will be computed on all yachts in time allowance classes, under the formula and rule of the N.A.Y.R.U.

Postponements of the starting time of a race will be for fifteen minute periods and will be indicated by code flag "G" (yellow and blue vertical stripes). At the end of the first postponement period, code flag "G" will be lowered and numeral pennant "1" (white with red ball) will be raised and left flying, indicating that all starts will be advanced fifteen minutes. In the event that additional postponement periods are necessary, code flag "G" will again be hoisted. At the termination of the postponement period, code flag "G" will again be lowered and the numeral pennant corresponding to the number of fifteen minute periods will be hoisted and left flying for the remainder of the starts.

In the event that the race for a class is to be called off, code flag "H" (white and red) will be hoisted on the committee boat two minutes before and shown until one minute after the starting gun or signal of the class concerned has been fired or made.

The classes following will take their time on gun or signal and make their starts on schedule.

SPECIAL NOTICE

In the event it is not possible to fire the starting gun for any class, due to conditions beyond the control of the committee, all yachts shall take their time from the signal shapes which will be hoisted on the committee boat.

SAILING COURSES

The sailing courses for all series races are shown on page 21 of this program.

The start and finish line, for all courses, is shown in detail on page 20.

All yachts, whose preparatory gun has not been fired, must keep clear of the starting line and must keep out of the restricted area. Any yacht willfully violating this rule will be disqualified.

All stakes to be left to port unless changed by the Sail Yacht Regatta Committee. If the committee decides to reverse the course and have stakes left to starboard, code flag "Y" (yellow and red diagonal stripes) will be flown from the R.C. boat. Code flag "Z" (black, blue and red triangle) will mean all stakes to port. The committee boat will fly a flag with letters "R.C."

If it is considered necessary to shorten the course to be sailed by any class, code flag "M" (blue flag with white cross) will be flown from one minute after the preparatory gun until the starting gun of that class. Numerals displayed on the committee boat during this period will indicate the shortened course to be sailed.

PROTESTS

All protests must be in writing, signed by the skipper, and must name the rule or rules alleged to have been infringed. Protests must be filed with the Sail Yacht Regatta Committee within two hours after finishing of protesting yacht. A yacht having cause to protest another yacht for infringement of these rules occurring during a race must promptly display red code flag "B" and keep it flying until she has finished the race, unless her skipper has no knowledge of the fact justifying the protest until after the conclusion of the race.

Notice of time of protest hearings and contestants involved will be posted on the bulletin board and, to the extent possible, will also be delivered in writing to the boats concerned.

GENERAL

No persons other than judge, timers, starters, and clerks will be allowed on the Sail Yacht Regatta Committee Boat without the consent of the chairman of the Regatta Committee.

Alterations of the race program or sailing courses may be made at the discretion of the Sail Yacht Regatta Committee and will be posted on the Headquarters Bulletin Board.

No guns will be fired for finishes until all classes have started.

Several short blasts on the whistle of a patrol boat or "R.C." boat indicates you are being hailed. If you are near, or the only boat in the vicinity of a patrol boat, Stop.



STROH'S

BOHEMIAN BEER

"Served
Wherever
Quality
Counts"

THE STROH BREWERY CO., DETROIT 26, MICH.



BROER - FREEMAN

Jefferson at Erie

T O L E D O



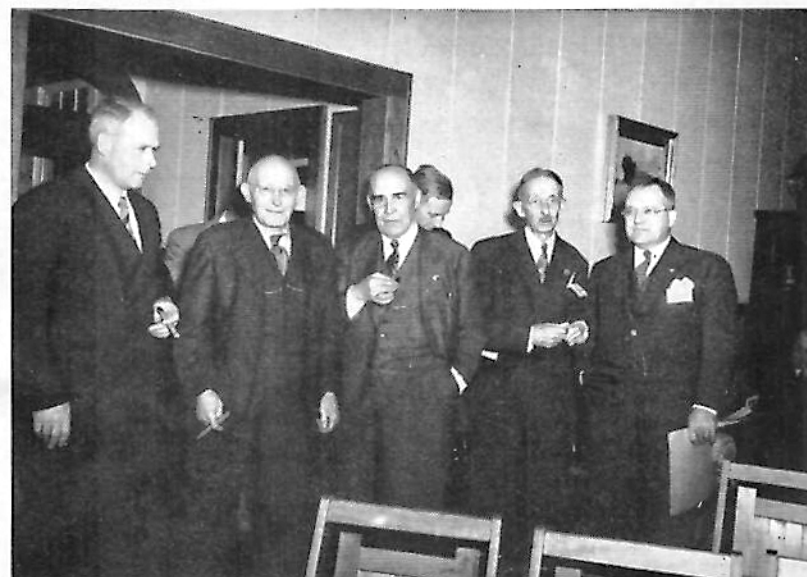
Registered Jewelers American Gem Society

Certified Gemologists

Compliments

of

CLEVELAND
YACHTING
CLUB, INC.





For a Brisk "Shore Leave"
Drop Anchor at Cedar Point

Then dance tonight and every night to the tantalizing tempos of America's big "name" bands . . . or sip frosty drinks while listening from its spacious lounges. The gay Amusement Circle and the broad white sand beach make Cedar Point the "Playground of the Great Lakes."

Newly rebuilt scenic auto drive connects Ohio Route 2 and U.S. 6 with Cedar Point. Rail and bus to Sandusky. Steamship Alabama to and from Cleveland.

Open Thru Labor Day

CEDAR POINT-ON-LAKE ERIE • Sandusky, Ohio

**SEE THE SENSATIONAL VIDAL MOLDED
PLYWOOD HULL IN ACTION AT THE BAY**

INTERNATIONAL 14
THISTLE
GREAT LAKES 21

as manufactured by

DOUGLASS & McLEOD, INC.

Box 311

Painesville, Ohio

MISCO

STEEL CASTING DIVISION

Carbon and constructional alloy steel castings

ALLOY CASTING DIVISION

Heat resisting • Corrosion resisting • Stainless Steel castings • Rough and machined

ROLLED PRODUCTS DIVISION

Rolled heat resisting and stainless steel from warehouse stocks • Fabricated products

PRECISION CASTING DIVISION

Production carbon and stainless steel castings made to micrometer tolerances

MICHIGAN STEEL CASTING COMPANY

1999 Guoin Street • DETROIT 7, MICHIGAN • Telephone Fitzroy 1545

One of the World's Pioneer Producers of Heat and Corrosion Resistant Alloy Castings

SEITZ STATE THEATRE

SANDUSKY, OHIO

NO CLOSED SEASON *For You*



Now is the time to get all set for your bird shooting this fall. All you need is your Winchester Model 12 shotgun, a Western Hand Trap, a carton of White Flyer Targets and Western Xpert shot shells.

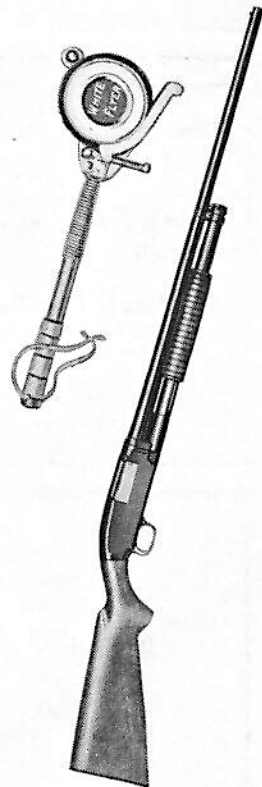
True, these "quail" can't w-h-i-r-r as they streak away but to powder 'em, you've got to come up mighty *fast*—just like on *real birds*.

You'll find a Western Hand Trap can give you marvelous practice for every kind of shot—particularly the ones you find most difficult.

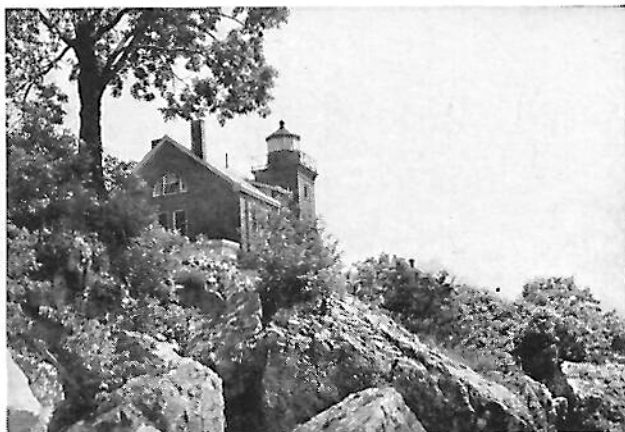
Get a gang to go snap shooting with you or, better yet, make it an occasion when the whole family can join in and enjoy shotgun shooting. Western Cartridge Company, East Alton, Illinois, Division of Olin Industries, Inc.

*MILLIONS CHOOSE THE WINCHESTER MODEL 12—
Its slide action is so free and easy, its balance so fine
that Model 12 shooters have found that they can
forget the gun and concentrate on the target.*

Western
WORLD CHAMPION AMMUNITION



CARTRIDGES • SHOT SHELLS • TRAPS AND TARGETS



The Put-In-Bay Light House

You Are Always Welcome
at the
CRESCENT

Chick Linker
PUT-IN-BAY, OHIO

Success to the Inter Lake Yachting Association
and to

COMMODORE
LESTER R. MYLANDER

The Detroit Yacht Club

• **Sales** • **Service** • **Supplies** • **Storage**
• **Marine Repairs**

Richardson & Truscott Boat Dealers

The Sandusky Boat Company

Washington and Meigs Streets

Telephone 2421

SANDUSKY, OHIO



Best Wishes to our Commodore

LESTER R. MYLANDER

for a most successful

1946 Regatta

**SANDUSKY
YACHT CLUB**

Masters
of Mixology Prefer...



MARTINI MANHATTAN

E & K

AMERICAN VERMOUTHS

FOR Matchless Cocktails

Congratulations

COMMODORE L. R. MYLANDER

ENGELS & KRUDWIG WINE CO...SANDUSKY, OHIO

YOUR DOG KNOWS BEST

FEED HIM
KASCO

I'M HOLDING
OUT FOR
KASCO!



You can't fool your dog. Feed him Kasco, the choice dry food that tastes better—goes farther—costs you less to feed.

Dogs Like It!

K13
KASCO COMPLETE DOG RATION

SMOOTH SAILING
FOR YOUR DOG TOO!

When you feed him

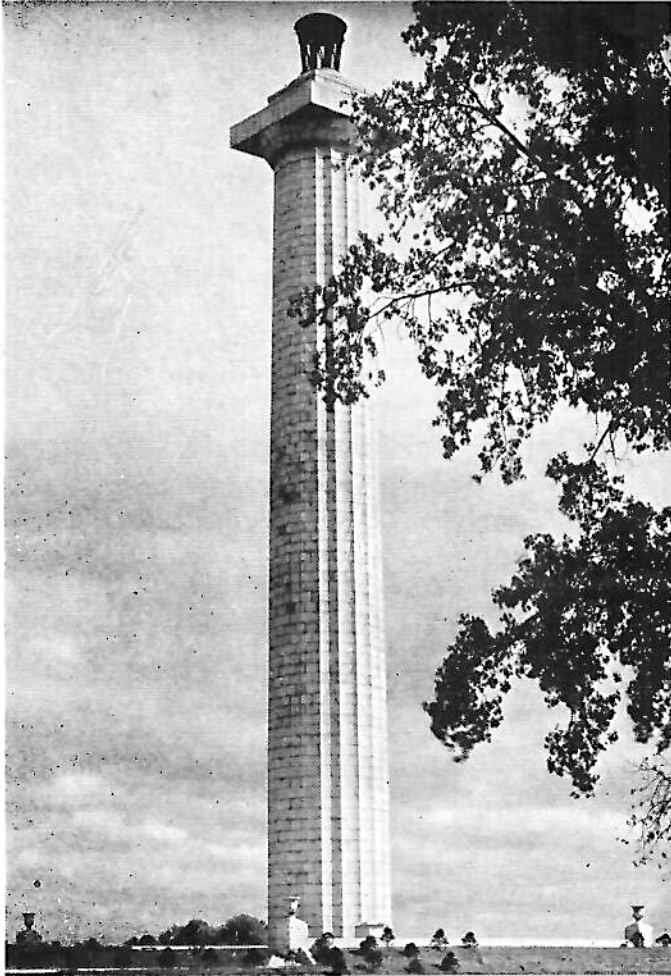
K A S C O

—The dog food that gives him what he needs and the food that he prefers.

HE { Do better
Look better } ON
WILL { Feel better
Act better } KASCO

"The Meaty Treat Dogs Love to Eat"

Manufactured by
KASCO MILLS INC.
TOLEDO, OHIO



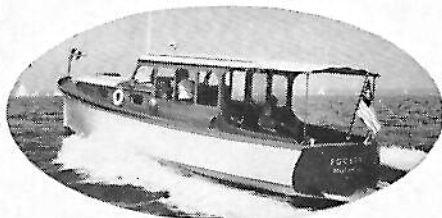
The Put-In-Bay Yacht Club

extends a cordial welcome to

I. L. Y. A. Yachtsmen

Compliments of
THE SANDUSKY SAILING CLUB
Sandusky, Ohio

Compliments of
DETROIT RECREATION CO.
The House of Service
88 Bowling Lanes — 48 Billiard Tables
COCKTAIL BAR
Home of D.Y.C. Bowling League
Recreation Building • CA. 6860
Opposite Post Office



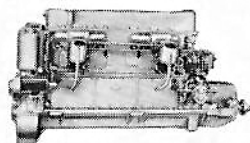
KERMATH MARINE ENGINES

Cost No More To Buy — A Great Deal Less To Own!

When you install a Kermath you get more than just a boat engine. You get the experience, extensive engineering and large manufacturing facilities acquired through 30 years of producing marine engines exclusively. And because Kermath offers you the world's widest selection of marine engines you get the engine best suited to your individual boat specifications and needs. It costs no more to buy a Kermath and a great deal less to own one! Why not specify a

Kermath for top performance—continuous satisfaction? Write for descriptive catalog.

KERMATH MFG. COMPANY
5890 Commonwealth Ave. Detroit 8, Mich.



25 TO 550 HORSEPOWER

KERMATH

A Kermath Always Runs

• GASOLINE • DIESEL

Products



by Jacobs

Indicative of the many advanced engineering and design changes, which will appear in the cars of the future, are the new, revolutionary products developed by the F. L. Jacobs Co.

F. L. JACOBS CO.

DETROIT 1, MICHIGAN

Headquarters of the Great Lakes for

MARINE HARDWARE AND SUPPLIES

TAPATCO PRODUCTS — Plymouth Cordage — Edward Smith & Dulux Marine
Paints and Varnishes — Propeller Reconditioning — Northhill Anchors — Chelsea Ship
Clocks — Shipmate & Blue Flame Gas — Hyde-Federal-Stannus Propellers —
Marine Glues

Parts — JOHNSON OUTBOARD MOTORS — Service

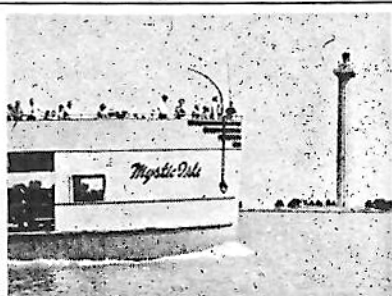
HENRY H. SMITH & COMPANY

356 East Jefferson Ave.

DETROIT, MICHIGAN

CHerry 0226-7

Our new and better location — a more complete stock — Cor. Brush and Jefferson



GRAY

**MARINE
MOTORS
GASOLINE
DIESEL**

Best wishes
for the 53rd
Put-in-Bay
Regatta —
Graymarine
engines have
taken yachtsmen
to 40 of them.

Gray Marine Motor Co., Detroit

THE ZEHNER PACKING COMPANY

DELICIOUS MEAT
PRODUCTS

Sole Makers of
DRESDEN HAM

Bellevue, Ohio

Compliments of

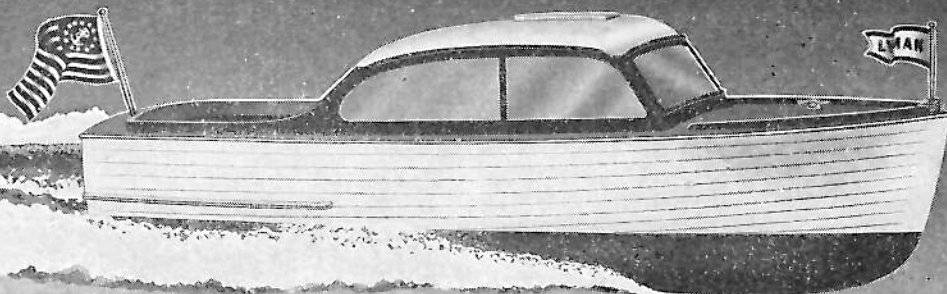
The KLEIN STEEL COMPANY

ENGINEERS — FABRICATORS AND ERECTORS OF
STRUCTURAL STEEL

PLATE AND MISCELLANEOUS IRON WORK

BELLEVUE, OHIO

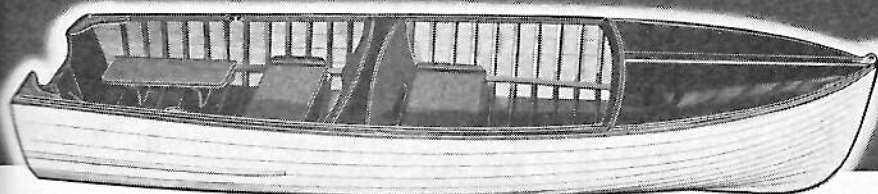
★ ★ ★ ★ ★
THE 20 FT. RUNABOUT



★ ★ ★
**CLINKER
BUILT**
★ ★ ★

INBOARD RUNABOUTS by LYMAN

Smartly styled new inboard runabouts will soon be built in 16, 18, 20, and 22 ft. sizes. Also a new 18 ft. medium speed "Islander" especially for fishing and trolling - all with a host of new features for your boating pleasure - all Clinker-Built for better performance and longer life.



**CLINKER-BUILT by
LYMAN!**

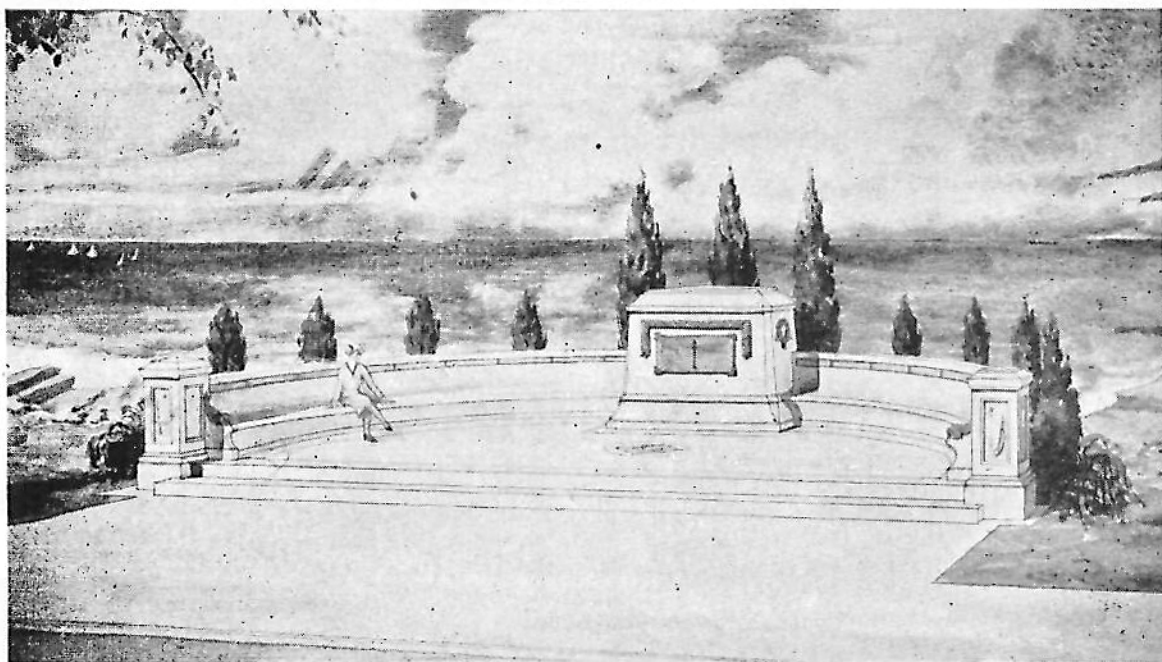
THE NEW OUTBOARDS

New design, new performance, and new beauty combined with time tested clinker construction makes the 1946 Lyman Outboard the finest we have ever produced.

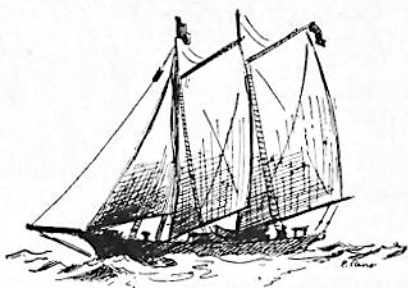
13 and 15 ft. runabouts now in production, to be followed soon by an 11 ft. runabout, the 13 ft. Ideal (combination rowing and outboard), and a new hull expressly for motors of 5 hp.

SEE YOUR LYMAN DEALER

LYMAN BOAT WORKS 1617 FIRST STREET
SANDUSKY, OHIO



Inter-Lake Yachting Association's Commodores' Memorial Monument



*A Name Every
Yachtman Knows!*

Berry Brothers Marine finishes have
been famous for quality and beauty
since 1858.



BERRY BROTHERS
Paints - Varnishes - Enamels - Lacquers
Detroit, Mich. Walkerville, Ont.

Compliments of

**EDGEWATER
YACHT CLUB**

Incorporated

CLEVELAND, OHIO



The "38" De Luxe Sedan is available in two optional interior plans.
Length 38' 11" w.l.—39' 11" o.a.—11' 8" beam—3' 2" draft—single or twin engines.

PRIDE OF OWNERSHIP

AS A MATTHEWS OWNER your pride of ownership will know no bounds. Yachtsmen everywhere concede top place to Matthews for quality, husky construction, long life and highest resale value.

The new 1946 Matthews is unsurpassed for complete appointments and equipment. We believe you will agree that no stock cruiser built today can equal it at the prevailing price.

Write today for complete circular and price list

OUR 56th YEAR



THE MATTHEWS CO.

PORT CLINTON 18, OHIO

In Miami: Fla.: MATTHEWS CRUISERS, INC.

1825 Biscayne Boulevard

Dealers from Coast-to-Coast

"Wherever you cruise . . . you'll find a Matthews"

STOP!

Don't get off the straight and narrow — BUT if you do, you may as well go ROUND and ROUND in the ROUND HOUSE with

the GREUNKES

The PARK HOTEL — ROUND HOUSE
PUT-IN-BAY

Set Your Course for

VERMILION

and

THE SOUTH
SHORE REGATTA

—
August 17-18
=

Compliments of

Commodore

A. F. WAKEFIELD

OUR BEST WISHES

FOR

A SUCCESSFUL

I.L.Y.A.

REGATTA

LAKESIDE YACHT CLUB

CLEVELAND, OHIO

CHAS. A. SPARKS, *Commodore*

CONGRATULATIONS

BAYVIEW YACHT CLUB

DETROIT, MICHIGAN

SPONSORS OF THREE ANNUAL
YACHTING CLASSICS

REGATTA	JUNE
MACKINAC RACE	JULY
ALL-NIGHT RACE	SEPTEMBER

**The Grosse Pointe Yacht Club Extends
Their Best Wishes to the**

I-L-Y-A

**for a very successful Regatta
at Put-In-Bay**

August 11, 12, 13, 14 and 15

Founded Nineteen Hundred and Sixteen

**THE G. & C.
FOUNDRY COMPANY**

Manufacturers of

**QUALITY SEMI-STEEL • ALLOYED SEMI-STEEL
HIGH TENSILE WEAR RESISTANT AND PRESSURE CASTINGS**

SANDUSKY, OHIO

"Compliments of J. J. Urschel"



Compliments of

**LEE WILSON
ENGINEERING COMPANY, Inc.**



INDUSTRIAL FURNACES

RADIANT TUBE HEATING

HEAT TREATING PROCESSES



CHRYSLER PRODUCTS

of International NAUTICAL FAME including

MARINE ENGINES

and

OILITE BEARINGS

Available Anywhere

CHRYSLER CORPORATION

Compliments from

JIM'S PLACE

TO

Commodore LESTER R. MYLANDER

OF

I. L. Y. A. REGATTA AND ALL FELLOW YACHTSMEN



JIM'S PLACE AT YOUR SERVICE
CHRIST. BASSIS AND THEODOR PAISOS

PUT-IN-BAY, OHIO

CHRIS-CRAFT

Distributors for Lake Erie Island District

SUPPLIES • REPAIRS

BROWN'S, INC.
Foot of Columbus Ave.
Sandusky, Ohio

WORTHY R. BROWN & SON, INC.
Erie Beach Road
Lakeside, Ohio

WILLIAM KUTTKUHN

*Advertising Printing and
Typography*



Printers of the Inter-Lake
Yachting Association Program

1036 BEAUBIEN STREET
Randolph 0962
DETROIT 26, MICHIGAN

M.S. — SOUTH SHORE

FERRY SERVICE

Cars and Passengers

to

Put-in-Bay

Spring, Summer and Fall

Summer Schedule

Lv. Put-in-Bay	-	Lv. Catawba
7:00 A.M.		8:00 A.M.
1:00 P.M.		2:30 P.M.
7:00 P.M.		8:00 P.M.

MILLER'S BOAT LIVERY

PUT-IN-BAY, OHIO

*Success to the
Inter-Lake Yachting Association*

TOLEDO YACHT CLUB

Perry's Victory Memorial



The great Doric column at Put-in-Bay, South Bass Island—Perry's Victory Memorial—holds special interest, for it commemorates not only the victory of Oliver Hazard Perry over the British Fleet in 1813, but the Northwest Campaign of William Henry Harrison and the one hundred years' peace ensuing between the United States and Great Britain.

It was erected under the auspices of the United States Government and the States of Ohio, Pennsylvania, Michigan, Illinois, Wisconsin, New York, Rhode Island, Kentucky and Massachusetts. The cornerstone was laid in July, 1913, and the monument was opened to the public in 1915. Built of pink Milford granite, destined to endure through the years, it rises 352 feet above the lake and when flood-lighted, its beacon is visible at forty miles at sea, reflected for twenty miles in all directions in the waters of Lake Erie.

It is the highest monument in the world, next to the Washington Monument, the greatest battle monument in the world and the most massive column ever attempted by ancients or moderns.

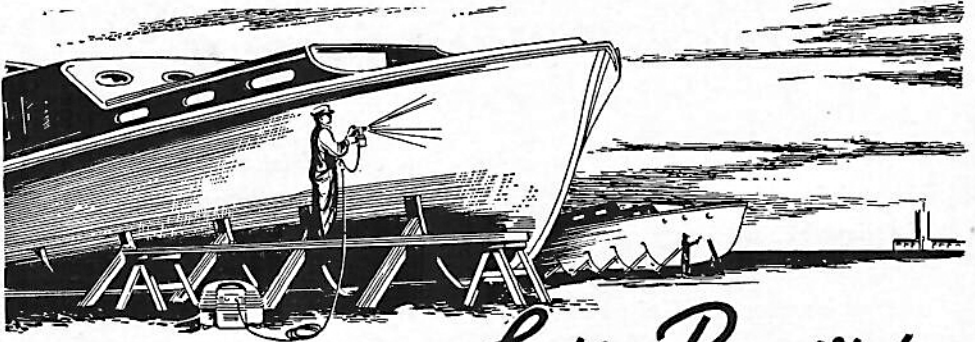
Beneath the monument lie three American and three British officers killed in the Battle of Lake Erie who had lain for over a hundred years where they had been buried on the shore of Lake Erie after the battle. This common burial is symbolic of the feeling that existed between the two nations at the close of the War and of the peace between them for over a century since.

The youthful Perry became a national hero, for he proved himself not only an able commander and clever strategist, but to quote Captain Barclay, the opposing commander, "a gallant and generous enemy." The monument honoring his victory will be known as "Perry's Monument" long after the events it commemorates are forgotten.

Compliments of

Bayview Yacht Club

Detroit, Michigan



KEEP HER *Looking Beautiful*



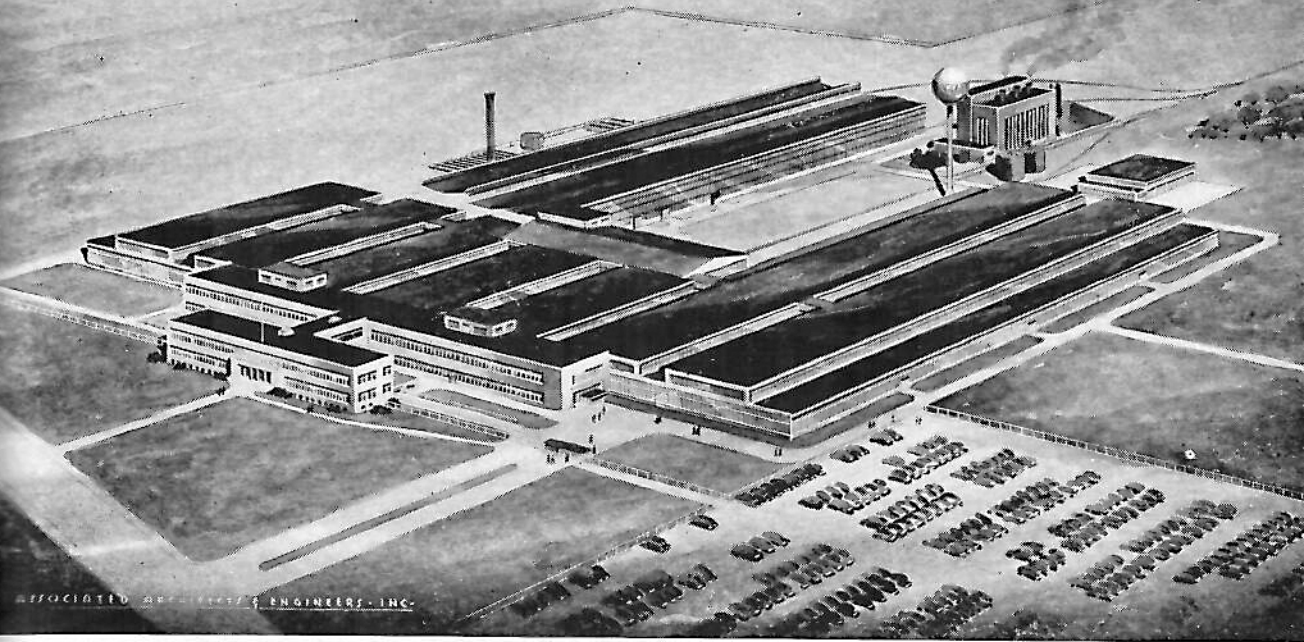
Pride of Possession is best demonstrated by keeping your pleasure craft clean, trim and well-painted. Keep her sea-worthy, weather-worthy and looking beautiful always. During "fitting-out" and for that mid-season touch-up, DeVilbiss Spray Equipment will help you to paint her better, faster and more economically.

THE DEVILBISS COMPANY • TOLEDO 1, OHIO

Compliments of

The American Crayon Co.

Sandusky, Ohio



HERE'S hoping for a favorable wind, a fair race, no red protest flags, a close finish—and may the best yacht win!

1

A new, completely integrated plant of the New Departure Division, of General Motors, is now building at Sandusky—to concentrate on the production of those types and sizes of New Departure ball bearings which are in greatest demand for the automotive industry in that general area.

Creative engineering and insistence upon fine precision quality has made New Departure the world's largest manufacturer of ball bearings.

3444

NEW DEPARTURE BALL BEARINGS

EXECUTIVE OFFICES AND MAIN PLANT :: BRISTOL, CONNECTICUT



Memorial Trophies

THE NORTHRUP MEMORIAL TROPHY

Is a cup presented to the Inter-Lake Yachting Association in perpetuation of the memory of the late Captain Louis G. Northrup, of the Buffalo Canoe Club. The deed of gift states that the Cup will be held for one year by the R class winner instead of the Club.

THE PARSONS TROPHY

Was financed by popular subscription among the yachtmen of the Inter-Lake, no subscription for more than five dollars being accepted. It was also agreed that no class would be stipulated but that the I.L.Y.A. annually designate the class it was to be raced for.

WM. H. HOMMEL TROPHIES

Trophies have been presented to the I.L.Y.A. by The Hommel Wine Co. of Sandusky, Ohio.

One is to be sailed for by yachts in the Deep Water Race from Detroit to Put-in-Bay and to be awarded to the yacht making the best corrected time. The trophy is to be in the custody of the winning Club until the next Regatta and the yacht's name will be engraved on the Trophy.

The other Trophy is to be awarded to the first boat to finish in the D.R.Y.A. Race to Put-in-Bay and to be held by the winning club.

The J. C. Goss Trophy for Star Boats. The winner will have his name engraved on Trophy and have possession of it for one year.

The Chalmers Burn Trophy is for C. K. Cat Boats. The winner will have possession of the Trophy for one year.

The Kermath Motor Co. Trophy for 8 meter yachts. Winner to hold Cup for one year.



Open to Visitors

"A MAN CANNOT MAKE HIM LAUGH, THAT'S NO MARVEL—

HE DRINKS NO WINE" — *Shakespeare*



CONEWAGO

C. W. BECK, JR.

DETROIT

SMOOTH SAILING

for

COMMODORE L. R. MYLANDER
AND OUR MANY FRIENDS IN THE
INTER-LAKE YACHTING ASSOCIATION

○

MOTOR SPECIALTIES CORPORATION

Manufacturers of Precision Parts

120 Mt. Elliott Ave.

Detroit, Michigan

Compliments

of

SCHNOOR & FUCHS

'Phones 311-701

PUT-IN-BAY, OHIO



H. H. KING, S.Y.C.

Chairman Entertainment Committee

JIM SMITH'S DECK

40 ft. from Grosse Pointe — Alter Road at East Jefferson
Fine Liquors — Beer & Wines

Design

• Building

• Repairs

LIGGETT BOAT WORKS

Trenton, Michigan

Trenton 1337

Established 1905

Supplies

• Storage

• Summer Dockage

Ride in Billy Adams' Taxis, the old reliable, 25 years courteous service. We welcome the I. L. Y. A. 1946 Regatta and appreciate your past patronage.
Billy.

All newly designed runabouts utilities and cruisers range from 17' to 42'; stock models, prices and catalogues ready about the 1st of January, 1947.

HACKER BOAT COMPANY

Wishing...

Commodore Lester R. Mylander

and the

Inter-Lake Yachting Association

a very successful and happy

Regatta *at* Put-In-Bay



Commodore Rolland G. Sloat

Commodore Charles M. Mouch Commodore Willard Pfefferkorn

Frederick L. Altstaetter

Frank R. Senn

Peter Catri

Ray F. Speers

Frank H. Haase

W. S. Willson

Franklin D. Hohler

MEMBERSHIP IN THE INTER-LAKE YACHTMEN'S FUND CONTRIBUTES TO A SUCCESSFUL REGATTA!

MEMBERSHIP JULY 1, 1946

Ed Affleck, T.Y.C.	C. E. McGregor, B.Y.C.
O. D. Apel, S.S.C.	J. L. Meyers, M.H.Y.C.
C. R. Austerberry, D.Y.C.	Geo. Michaux, S.Y.C.
C. W. Beck, Jr., B.Y.C.	Lee Miller, P.I.B.Y.C.
J. A. Beidler, Jr., T.Y.C.	W. H. Miller, V.B.C.
H. S. Bowen, S.Y.C.	J. M. Monahan, O.C.B.C.
Carl Biro, S.Y.C.	C. M. Mouch, S.Y.C.
Elmer Biro, S.Y.C.	Dr. L. R. Mylander, S.Y.C.
Vincent Biro, S.Y.C.	R. T. Nye, S.Y.C.
W. F. Broer, T.Y.C.	Fred Pantell, S.Y.C.
Dr. H. O. Brown, V.B.C.	J. A. Poulos, P.I.B.Y.C.
W. R. Brown, S.Y.C.	E. H. Reed, T.Y.C.
Dr. Wm. Burger, S.Y.C.	N. D. Richards, A.Y.C.
W. G. Burkhardt, P.L.Y.C.	C. B. Rickarts, C.B.C.
R. P. Calkins, B.V.Y.C.-M.Y.C.-O.R.Y.C.	W. K. Roberts, C.Y.C.
C. K. Cattnach, S.Y.C.-V.B.C.	Wm. Robertson, W.C.Y.C.
F. G. Coggin, B.Y.C.	Adolph Seidel, T.Y.C.
W. L. Cotter, S.Y.C.	Alden Seitz, S.Y.C.
R. R. Daley, D.Y.C.	E. V. Seitz, S.Y.C.
K. M. Eckerd, E.Y.C.	J. E. Schlicht, S.Y.C.
Edgewater Yacht Club, E.Y.C.	W. G. Schwer, S.Y.C.-S.S.C.
T. B. Farnsworth, B.Y.C.	Marsh Sinclair, M.R.Y.C.
H. A. Finch, C.S.Y.C.	R. Sloat, S.Y.C.
J. F. Flynn, S.Y.C.	Frank Smick, C.Y.C.
Sidney Frohman, S.Y.C.	Dr. L. Stack, L.Y.C.
Gar Wood, D.Y.C.	C. W. Stage, Jr., M.H.Y.C.
A. J. Grundy, D.Y.C.	C. F. Stewart, M.H.Y.C.
G. E. Harrison, P.I.B.Y.C.	R. R. Stewart, S.Y.C.
H. A. Hall, V.B.C.	R. A. St. John, D.Y.C.
J. C. Heintz, C.Y.C.	R. A. Thom, S.Y.C.
W. J. Henderson, M.H.Y.C.	W. R. Timken, C.Y.C.
Russell Hills, S.Y.C.	K. W. Vance, C.S.Y.C.
W. L. James, C.Y.C.	J. T. Van Dorn, C.Y.C.
H. C. Kendall, D.Y.C.-C.S.Y.C.	M. L. Vixler, L.Y.C.
E. W. Kiefer, P.H.Y.C.	E. R. Wallace, M.H.Y.C.
E. T. Kindt, C.Y.C.	A. F. Wakefield, V.B.C.
H. H. King, S.Y.C.	D. H. Warner, V.B.C.-S.Y.C.
L. J. Kirchner, N.Y.C.	Roy Webster, P.I.B.Y.C.
D. W. Krug, C.L.Y.C.	R. C. Wennes, S.Y.C.
N. H. Ladd, P.I.B.Y.C.	F. F. White, M.H.Y.C.
G. O. Liebner, L.Y.C.	F. E. Wiehn, S.Y.C.
L. L. Lodge, D.Y.C.	R. E. Williamson, C.Y.C.
R. A. Luedtke, T.Y.C.	Lee Wilson, C.Y.C.
W. E. Lyman, S.Y.C.	E. T. Wolfe, B.L.Y.C.
D. K. MacBride, P.L.Y.C.	B. R. Wood, S.Y.C.
Fred Martin, Jr., S.Y.C.	W. J. Wright, V.Y.C.

MAIL YOUR CONTRIBUTION (\$5.00 or more) TO:

COMMODORE EARL V. SEITZ, SECRETARY
SANDUSKY, OHIO

YOUR SUBSCRIPTION IS DEDUCTIBLE FOR INCOME TAX PURPOSES

S U C C E S S

to the Fifty-Third Annual

Inter-Lake Yachting Association Regatta

and Best Wishes to

Commodore LESTER R. MYLANDER



Commodore Sidney Frohman
Commodore Earl V. Seitz
Commodore George Michaux
Commodore Wilbert G. Schwer
Commodore James F. Flynn
Dr. Wm. F. Burger
Walter W. Jones
Herman H. King
Eugene F. Emmons
Rowland H. Zimmerman.



ANCHORS AWEIGH!

● As the cannon booms the start of the first race, remember that many who are here have been on or across the seven seas during one or more of our recent regattas. One of their brightest dreams may well have been to meet with us again. Let their joys of realization be undimmed. And for those, stayed by the hand of Fate from keeping this tryst, we whisper "Anchors Aweigh on the slumbering sea of Eternity".

**The Union Chain and Manufacturing Co.
Sandusky, Ohio, U.S.A.**

**UNION
CHAINS**

Manufacturers of Steel Chains and Sprockets for the transmission of power and the conveying and elevating of material.