

MARDI GRAS

Wednesday Evening
July 13th, 1927

Captain Kid and His Jolly
Pirates Will Capture
the Bay

EVERYBODY WELCOME

Come in Costume and Win a Prize

GRAND PARADE

will start at 8:30 p. m.
Assemble at Town Hall, opposite P. O.
at 8:00 p. m.

AFTER THE PARADE

Grand Carnival and Dance

at Colonial [immediately following
parade]

Prizes for Best Costumes and Floats will be
awarded at 11:00 p. m.

Capt. Aaron DeRoy - - - - - Marshall
Capt. Joseph Burkheiser - Aide-to-Marshall

PROPERTY OF
WELLES

No. _____

INTER-LAKE YACHTING ASSOCIATION



34TH ANNUAL REGATTA
JULY 10-16, 1927
PUT-IN-BAY, OHIO

Is Your Name ? on the List

The Yachtmen's Fund Established 1916

The Fund has raised money each year for ten years from yachtmen of the Inter-Lake who desire to aid in making the Inter-Lake Regattas more successful and less expensive to our Commodore each year. Beside helping out on the expenses of each regatta, for ten years the Fund has also accumulated an endowment for future Inter-Lake activities—to make it permanent, so that those following after us will enjoy what we are enjoying today, the greatest week of yachting pleasure anywhere in the World.

Won't You Make Your Contribution Now!

It costs money to run the Inter-Lake. The income from dues paid by clubs is small—the profit on the program advertising is small—the dinners, the ball and other events mean a deficit—the prize contributions help out—but there is not enough coming in to cover everything and the Yachtmen's Fund was originated to help cut down the deficit which always falls on the broad shoulders of our Commodore.

You get a big aquatic event annually without being charged a dime. Reasoning things out as we have for you on this page, we feel that you are a sure contributor to the Fund and we will look for your check to help us give the 1927 administration a lot of financial co-operation, as we know they have worked hard to arrange a wonderful regatta for your pleasure and ours. Here are the ones who contributed last year:

Austin, Harry	Geier, P. A.	Rohr, John T.
Alexander, T. B.	Gunnison, H. B.	Russell, C. A.
Brennan, Charles H.	Haggerty, John S.	Rennie, R. W.
Burn, Chalmers	Henry, R.	Richardson, S. O., Jr.
Bradley, Alva	Hackett, Dr. A. R.	Roberts, F. W.
Barthel, Otto F.	Hess, Henry W.	Russel, Walter S.
Billingsley, W. J.	Helfman, John	Sullivan Packing Co.
Cornell, C. B.	Huntington, Wm. R.	Sackett, L. A.
Cutting, C. D.	Jennings, Dr. C. G.	Stafford, Edmund J.
Clippert, Charles F.	Jennings, Alpheus F.	Schell, John A.
Clippert, Dr. F. J.	Jerome, George	Seitz, Frank J.
Clippert, William	Johannsen, Mrs. S. M.	Sinclair, George W.
Cleveland Boat Club	Kittles, William	Stubig, W. O.
Collins, E. H.	Kotcher, Charles W.	Schmitt, Theodore
DeVilbiss, T. A.	Krolik, Joseph N.	Schantz, Com. A. A.
Dexter, John L.	Krauss, C. H.	Schmitt, Emil G.
Doan, George H.	Marsh, R. George	Smoult, William
DeSpelder, L. G.	Mooney, George F.	Tallman, John A.
Edenburn, W. D.	Oakman, Robert	Vaughan, Dr. J. W.
Fisher, Charles T.	Owen, T. H.	Venn, Ernest
Frohman, Sidney	Osius, George	Winter, Frederick J.
Fleming, Jos. S.	Parshall, Dr. Homer E.	Wood, G. H.
Flynn, E.	Potter, S. E.	Wagner, A. B.
Fraser, Andrew	Pierce, George W.	Wakefield, Com. F. W.
Goss, J. C.	Palmer, H. G.	

Send your contribution to Yachtmen's Fund, 1018 Lafayette Building, Detroit, or to any of the following Trustees at the Bay.

Harry Austin
William J. Billingslea
Sidney Frohman
Henry W. Hess
Dr. A. R. Hackett
George W. Pierce
F. W. Roberts
Chris Smith
F. W. Wakefield
Charles D. Lynch, Secy. and Treas.

PROGRAM

OF THE

INTER-LAKE YACHTING ASSOCIATION

1927



FILE NO.	PHOTO DATE
TITLE	
PLACE	HELEN BROOKS
COLLECTION	WLEH - COLLECTION

ORGANIZED JAN. 17, 1885
REORGANIZED MAR. 19, 1894

MEMBER OF

Yachting Racing Union of the Great Lakes
Star Class Yachting Racing Association
American Power Boat Association
International Power Boat Union
Amateur Athletic Union
Central Association

WLEH - HELEN
BROOKS
COLLECTION



Dr. Wm. A. Wilson
Bayview Yacht Club
Commodore



E. H. Reed
Toledo Yacht Club
Vice-Commodore



Leo J. Monahan
Detroit Yacht Club
Sec'y. Treas.

Inter-Lake Yachting Association

FLAG OFFICERS

1927

Inter-Lake Yachting Association

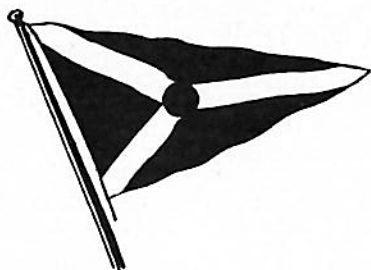
CLUBS ENROLLED

Bay City Boat Club	Edison Boat Club
Bayview Yacht Club, Detroit	Erie Yacht Club
Bay View Yacht Club, Toledo	Grosse Pointe Yacht Club
Buckeye Lake Yacht Club	Maumee River Yacht Club
Buffalo Canoe Club	Miss Detroit Power Boat Assn.
Buffalo Launch Club	Mohawk Boat Club
Buffalo Yacht Club	Monroe Yacht Club
Cleveland Boat Club	Ottawa River Yacht Club
Cleveland Metropolitan Yachting Assn.	Port Clinton Yacht Club
Cleveland Yachting Club	Port Huron Yacht Club
Corinthian Yacht Club, Rocky River, Ohio	Put-In-Bay Yacht Club
Country Club of Detroit	Riverside Boat Club, Lakewood
Detroit Boat Club Yachtsmen	Riverside Boat Club, Toledo
Detroit Masonic Country Club	Sandusky Yacht Club
Detroit Yacht Club	Toledo Yacht Club
	Vermilion Boat Club
	Walkerville Boat Club

PAST COMMODORES

*Geo. W. Gardner, C. Y. C.	1894
*John E. Guncel, T. Y. C.	1895
*Geo. H. Worthington, C. Y. C.	1896
*S. O. Richardson, Jr., T. Y. C.	1897
Alex. I. McLeod, D. Y. C.	1898
*Geo. T. Bliss, E. Y. C.	1899
Geo. F. Anderson, S. Y. C.	1900
*Wm. R. Huntington, S. Y. C.	1901
*C. C. Warren, S. Y. C.	1902
*Henry Tracy, T. Y. C.	1903
John H. Smedley, D. B. C. Y.	1904
*Geo. H. Worthington, C. Y. C.	1905
John F. Craig, T. Y. C.	1906
*Frank W. Fletcher, T. B. Y. A.	1907
*Geo. H. Worthington, C. Y. C.	1908
*S. O. Richardson, Jr., T. Y. C.	1909
C. G. Jennings, C. C. of D.	1910
Alexander Winton, L. Y. C.	1911
*Wm. R. Huntington, S. Y. C.	1912
*Geo. H. Worthington, C. Y. C.	1913
Henry W. Hess, T. Y. C.	1914
Harry C. Kendall, D. Y. C.	1915
Emil G. Schmidt, S. Y. C.	1916
Alexander Winton, C. Y. C.	1917
*Wm. R. Huntington, S. Y. C.	1918
R. George Marsh, G. P. Y. C.	1919
F. W. Wakefield, V. B. C.	1920
F. W. Roberts, C. Y. C.	1921
C. W. Kotcher, D. Y. C.	1922
Sidney Frohman, S. Y. C.	1923
Otto F. Barthel, D. Y. C.	1924
Thos. A. DeVilbiss, T. Y. C.	1925
A. A. Schantz, D. Y. C.	1926

*Deceased.



Barbette

I-L. Y. A. FLAGSHIP, 1927

Commodore Wilson will hold open house on the Flagship Barbette, Monday, July 11th, 4:30 to 5:30 p. m. All registered yachtsmen are invited to attend.

Officers 1927

OFFICERS

Commodore, Wm. A. Wilson, B. Y. C.
Vice-Commodore, E. H. Reed, T. Y. C.
Rear-Commodore, J. W. Fraser, Cor. Y. C.
Secretary-Treasurer, Leo J. Monahan, D. Y. C.
Librarian, Frank R. Frey, T. Y. C.
Fleet Surgeon, Dr. J. W. Vaughan, D. B. C.
Sail Yacht Measurer, R. A. Luedtke, T. Y. C.
Power Boat Measurer, Frank Gerden, C. B. C.

YACHTSMEN'S FUND TRUSTEES

Organized 1916

*President, Wm. R. Huntington, S. Y. C.
Vice President, F. W. Roberts, C. Y. C.
Secretary-Treasurer, Chas. D. Lynch, D. Y. C.
1003 Lafayette Building, Detroit, Michigan,
Cadillac 6709

Harry Austin, D. B. C. Y.	Henry W. Hess, T. Y. C.
Wm. J. Billingslea, M. R. Y. C.	*S. O. Richardson, Jr., T. Y. C.
Sidney Frohman, S. Y. C.	F. W. Wakefield, V. B. C.
*Deceased.	

DELEGATES

American Power Boat Association

Alex I. McLeod, D. Y. C.	John G. Robinson, C. Y. C.
	Earl Shanteau, O. R. Y. C.

Amateur Athletic Union

Chas. D. Lynch, D. Y. C.

Yacht Racing Union

Dr. C. G. Jennings, C. C. D.	Otto F. Barthel, D. Y. C.
	R. A. Luedtke, T. Y. C.

SAIL YACHT JUDGES COMMITTEE

Com. Harry Kendall, D. Y. C., Chairman
 Com. C. G. Jennings, C. C. D.
 Com. F. W. Roberts, C. Y. C.
 Com. Harry Austin, D. B. C. Y.
 Com. W. G. Sheehan, B. Y. C.
 R. A. Luedtke, T. Y. C.
 F. W. Wakefield, V. B. C.
 W. J. Billingslea, M. R. Y. C.
 Com. Melvin Crawford, M. C. C.
 Arthur Phelps, Cor. Y. C.
 John L. Dexter, D. B. C.

SAIL YACHT RULES COMMITTEE

Harry Austin, D. B. C., Chairman
 Com. O. F. Barthel, D. Y. C.
 P. C. Williamson, B. Y. C.
 R. A. Luedtke, T. Y. C.
 Theo. H. Pickering, B. C. C.
 J. P. Williams, Jr., B. Y. C.

SAIL YACHT REGATTA COMMITTEE

Otto F. Barthel, D. Y. C., Chairman
 Hugh Gunnison, D. Y. C., Vice-Chairman
 Alex I. McLeod, D. Y. C.
 T. P. Archer, B. Y. C.
 W. J. Billingslea, M. R. Y. C.
 C. B. Cornell, B. L. Y. C.
 Harold Hall, D. Y. C.
 Chalmers C. Burn, D. Y. C.
 Harry V. Bisgood, B. C. C.
 Meredith Potter, B. Y. C.

POWER BOAT JUDGES COMMITTEE

Com. Chas. B. Solder, C. B. C., Chairman
 Com. W. C. Priest, C. Y. C.
 Com. Wm. Urschel, T. Y. C.
 Com. C. W. Kotcher, D. Y. C.
 Com. Alex I. McLeod, D. Y. C.
 Aaron DeRoy, D. Y. C.
 Com. Henry Hess, T. Y. C.
 Warren Packard, D. Y. C.
 Com. S. B. Egan, B. Y. C.

POWER BOAT RULES COMMITTEE

Frank Gerden, C. B. C., Chairman
 W. D. Edenburn, D. Y. C.
 Com. Fred Still, A. P. B. A.
 Com. S. B. Egan, B. Y. C.
 H. R. Tyroler, C. Y. C.
 E. V. Rippingille, D. Y. C.
 Ellis C. Bunn, M. R. Y. C.

POWER BOAT REGATTA COMMITTEE

Com. J. A. Tallman, T. Y. C., Chairman
 Com. J. H. Reed, C. Y. C.
 Com. E. E. Noble, C. Y. C.
 A. R. Hackett, D. Y. C.
 Wm. E. Meier, C. Y. C.
 Com. Geo. Marsh, G. P. Y. C.
 John L. Clark, B. C. C.
 Lee Kellar, S. Y. C.
 Joseph J. Miller, D. Y. C.
 L. P. Fisher, D. Y. C.

POWER BOAT RUNABOUT COMMITTEE

L. H. Thomson, D. Y. C., Chairman
 D. H. Locke, D. Y. C.
 Com. J. H. MacDowell, C. Y. C.
 James Trudell, D. Y. C.
 Chris Smith, D. Y. C.
 John C. Wright, D. B. C.
 Louis Chapoton, D. Y. C.

OUTBOARD MOTOR COMMITTEE

Dr. A. R. Hackett, D. Y. C., Chairman
 Ellis C. Bunn, M. R. Y. C.
 M. A. Meier, D. Y. C.
 E. P. Gould, D. Y. C.
 W. R. Doak, D. O. M. A.
 Judge Aaron B. Cohn, R. B. C.
 H. S. Thomas, C. Y. C.
 Francis J. Killeen, B. C. C.

OTHER SPORTS COMMITTEE

Com. Geo. Pierce, B. L. Y. C., Chairman
 G. A. Tompkins, D. Y. C.
 C. D. Lynch, D. B. C.
 G. A. Sackett, B. L. Y. C.
 Robert Gregg, Walkerville B. C.
 Harry Austin, D. B. C. Y.
 Leo Monahan, D. Y. C.
 Com. Henry Hess, T. Y. C.
 Fred Porter, C. Y. C.
 Com. I. M. Nagle, E. Y. C.
 Dan Lynch, D. Y. C.
 A. B. Heavenrich, D. Y. C.
 Geo. Van, D. Y. C.

PUBLICITY COMMITTEE

Harold George, Detroit News, Chairman
 Frank Skeldon, Toledo Blade
 Earl Aiken, News Bee (Toledo)
 Paul Schrader, Toledo Times
 W. W. Edgar, Detroit Free Press
 Harry LaDuc, Detroit News
 Ken Hall, Detroit Times
 Edward F. Bang, Cleveland News
 J. Lee Barrett, Y. A. A.
 Harold Aarons, D. Y. C.
 W. D. Edenburn, D. Y. C.
 A. W. Garren, E. Y. C.
 Walt Knobloch, E. Y. C.
 F. H. Knuth, E. Y. C.
 Francis J. Killeen, B. Y. C.
 Com. Emil Schmidt, P. I. B. Y. C.
 Maurice Caplin, Metropolitan Film Co.
 C. B. Brennan, Mohawk B. C.

SQUADRON CRUISE COMMITTEE

Com. Mark R. Hanna, D. Y. C., Chairman
 Com. J. A. Tallman, T. Y. C., Vice-Chairman
 Dr. A. R. Hackett, D. Y. C.
 Robert Oakman, D. Y. C.
 Charles Fisher, D. Y. C.
 Geo. H. Phelps, D. Y. C.
 Alex I. McLeod, D. Y. C.
 T. A. DeVilbiss, T. Y. C.
 C. Stanley Morgan, D. Y. C.
 Ralph Sidway, B. L. C.
 Robert Morrow, C. B. C.
 John B. Farr, D. Y. C.
 Chas. P. Seider, D. Y. C.
 Com. H. M. Hill, B. C. C.
 F. R. Bellows, D. Y. C.
 LeRoy Gilbert, D. Y. C.
 Ernest Venn, D. Y. C.

TROPHY COMMITTEE

Com. C. W. Kotcher, D. Y. C., Chairman
 Com. E. E. Noble, C. Y. C.
 Com. Mark Hanna, D. Y. C.
 Com. F. W. Roberts, C. Y. C.
 Com. John Metcalf, E. Y. C.
 Com. L. M. Nagle, E. Y. C.
 Com. H. M. Hill, Jr., B. C. C.
 Theo. H. Pickering, B. C. C.
 A. S. Davis, T. Y. C.
 Otto Voss, C. Y. C.
 Walter Noack, D. B. C. Y.

PRIZE DISTRIBUTION COMMITTEE

R. A. Luedtke, T. Y. C., Chairman
 R. W. Rennie, D. Y. C.
 Chalmers Burn, D. Y. C.
 O. R. Benjamin, E. B. C.

LADIES' ENTERTAINMENT COMMITTEE

Mrs. Fred W. Roberts, Cleveland, Chairman
 Mrs. Wm. A. Wilson, Detroit
 Mrs. Ernest Venn, Detroit
 Mrs. Rudolph A. Luedtke, Toledo

ENTERTAINMENT COMMITTEE

Edward H. Zerbe, D. Y. C., Chairman
 Paul H. Kuebler, T. Y. C.
 Frank R. Frey, T. Y. C.
 Lee Keller, S. Y. C.
 Otto G. Voss, C. Y. C.
 Andrew G. Schlee, M. C. C.
 Albert S. Beck, D. Y. C.
 Tom Archer, B. Y. C.
 Aaron DeRoy, D. Y. C.
 Norman Soderland, D. Y. C.
 H. T. Jones, T. Y. C.
 Wm. A. Wood, C. Y. C.
 Walter Parker, B. Y. C.
 Com. A. G. Smith, P. I. B. Y. C.
 Com. T. B. Alexander, P. I. B. Y. C.
 H. A. Buchbinder, D. Y. C.

RECEPTION COMMITTEE

Com. C. W. Kotcher, D. Y. C., Chairman
 Com. W. C. Warren, Jr., B. C. C.
 Com. Harry H. Larkins, B. L. C.
 Com. A. I. McLeod, D. Y. C.
 Com. C. G. Jennings, C. C. D.
 Com. Henry W. Hess, T. Y. C.
 Com. A. A. Schantz, D. Y. C.
 Com. O. F. Barthel, D. Y. C.
 Com. H. C. Kendall, D. Y. C.
 Com. Emil Schmidt, S. Y. C.
 Com. F. W. Roberts, C. Y. C.
 Com. R. Geo. Marsh, G. P. Y. C.
 Com. F. W. Wakefield, V. B. C.
 Com. Sidney Frohman, S. Y. C.
 Com. Thos. A. DeVilbiss, T. Y. C.
 Com. J. H. Smedley, D. B. C. Y.
 Com. Geo. F. Anderson, S. Y. C.
 Com. John F. Craig, T. Y. C.
 Com. Alex Winton, C. Y. C.
 Com. Melvin Crawford, M. C. C.
 Com. Chas. E. Sorensen, D. Y. C.
 Com. W. F. Jennison, D. B. C.
 Com. Harry D. Freeman, P. I. B. Y. C.
 Com. S. B. Egan, Buffalo Y. C.
 Com. Jos. Nagle, E. B. C.
 Com. John Metcalf, E. Y. C.
 Com. Wm. J. Billingslea, M. R. Y. C.
 Com. G. H. Wood, M. Y. C.
 Com. H. H. Clough, P. H. Y. C.
 Com. T. B. Alexander, P. I. B. Y. C.
 Com. Neil C. McMath, B. Y. C.

**GRAND LIST OF TROPHIES AND PRIZES PRESENTED TO
THE INTER-LAKE YACHTING ASSOCIATION FOR
THEIR 34TH ANNUAL REGATTA, HELD JULY
10TH TO 16TH, 1927, AT PUT-IN-BAY**

THE DETROIT YACHT CLUB COMMODORE'S TROPHY

Silver Loving Cup
Presented by Commodore Chas. E. Sorensen,
Detroit, Michigan.

**THE DETROIT YACHT CLUB VICE-COMMODORE'S
TROPHY**

Silver Cocktail Set
Presented by Commodore Mark R. Hanna,
Detroit, Michigan.

**THE DETROIT YACHT CLUB REAR COMMODORE'S
TROPHY**

Silver Loving Cup
Presented by Commodore LeRoy J. Gilbert,
Detroit, Michigan.

THE DETROIT YACHT CLUB TROPHY

Silver Loving Cup
Presented by Detroit Yacht Club,
Detroit, Michigan.

DAVIS BOAT COMPANY TROPHY

Silver Loving Cup
Presented by Davis Boat Co., Seth C. Davis, Prop.,
Trenton, Michigan.

COMMODORE NORTHRUP MEMORIAL TROPHY

Special Design. Endowed with a \$5,000.00 Fund,
Presented by Mrs. Helen Knox,
Buffalo, N. Y.

AARON DeROY TROPHY

Silver Cocktail Set
Presented by Mr. Aaron DeRoy,
Detroit, Michigan.

MAIN SHEET TROPHY

Silver Loving Cup.
Presented by Main Sheet,
Detroit, Michigan.

W. C. NOACK & SONS TROPHY

Silver Loving Cup
Presented by W. C. Noack & Sons,
Detroit, Michigan.

CHRIS SMITH & SONS BOAT COMPANY TROPHY

Silver Loving Cup
Presented by Chris Smith & Sons Boat Co.,
Algonac, Michigan.

THE DETROIT NEWS TROPHY

Silver Loving Cup
Presented by the Detroit News,
Detroit, Michigan.

COMMODORE C. W. KOTCHER TROPHY

Silver After Dinner Coffee Set
Presented by Commodore C. W. Kotcher,
Detroit, Michigan.

ROBERT OAKMAN TROPHY

Silver Loving Cup
Presented by Mr. Robert Oakman,
Detroit, Michigan.

COMMODORE OTTO BARTHEL TROPHY

Silver Loving Cup
Presented by Commodore Otto Barthel,
Detroit, Michigan.

KERMATH MANUFACTURING COMPANY TROPHY

Silver Cocktail Set
Presented by Kermath Manufacturing Co.,
Detroit, Michigan.

DAVID C. WHITNEY TROPHY

Silver After Dinner Coffee Set
Presented by David C. Whitney,
Detroit, Michigan.

COMMODORE T. A. DEVILBISS TROPHY

Silver Loving Cup
Presented by Commodore T. A. DeVilbiss,
Toledo, Ohio.

CLEVELAND YACHTING CLUB TROPHY

Silver Loving Cup
Presented by the Directors of Cleveland Yachting Club,
Cleveland, Ohio.

STAR CARPET CLEANING COMPANY TROPHY

Silver Cocktail Set
Presented by J. J. Trudell,
Detroit, Michigan.

THE MATTHEWS COMPANY TROPHY

Combination Ship's Bell Clock and Barometer
Presented by The Matthews Company,
Port Clinton, Ohio.

THE WINTON ENGINE TROPHY

Silver Loving Cup
Presented by F. C. Erdman and G. W. Codrington,
Cleveland, Ohio.

GREENWOOD, ATKINSON, ARMSTRONG TROPHY

Yachting Suit to Order
Presented by Greenwood, Atkinson, Armstrong Co.,
Detroit, Michigan.

ELGIN NATIONAL WATCH COMPANY TROPHY

One Elgin Unit Control Board Tachometer Complete
Presented by Elgin National Watch Company,
Chicago, Illinois.

S. APPEL & COMPANY TROPHY

Yachting Suit and Cap
Presented by S. Appel & Company,
New York City, N. Y.

COMMODORE A. I. McLEOD TROPHY

Silver Loving Cup
Presented by Commodore A. I. McLeod,
Detroit, Michigan.

PACKARD MOTOR CAR COMPANY TROPHY

Silver Loving Cup
Presented by Packard Motor Car Company,
Detroit, Michigan.

THE DETROIT FREE PRESS TROPHY

Silver Loving Cup
Presented by the Detroit Free Press,
Detroit, Michigan.

COMMODORE HARRY A. PARSONS MEMORIAL TROPHY

A Perpetual Trophy
Presented by I.-L. Y. A. Yachtsmen.

EVINRUDE MOTOR COMPANY TROPHY

Silver Loving Cup
Presented by Evinrude Motor Company,
Milwaukee, Wis.

SEA BIRD TROPHY

Silver Coffee Set
Presented by Hacker & Fermann, Inc.,
Detroit, Michigan.

EDMUND CLARK COMPANY TROPHY

Italian Nautical Lamp and Compass Combined
Presented by Edmund Clark Company,
Detroit, Michigan.

WAYCO OIL CORPORATION TROPHY

Silver Cocktail Set
Presented by Wayco Oil Corporation,
Detroit, Michigan.

MONTAUK BEACH TROPHY

One Gallon Silver Cocktail Shaker
Replica of Montauk Light House
Presented by Carl G. Fisher,
Montauk Beach, Long Island, N. Y.

HACKER CRAFT TROPHY

Silver Cocktail Shaker
Presented by Hacker Boat Company,
Mt. Clemens, Michigan.

COMMODORE WM. A. WILSON TROPHY

Presented by Commodore Wm. A. Wilson,
Detroit, Michigan.

To be won by the Captain Kidd having the largest attendance of
Barnacles in uniform at the Mardi Gras.

HENRY H. SMITH & COMPANY PRIZE

50-lb. Anchor
Presented by Henry H. Smith & Co.
Detroit, Michigan.

A. G. REDMOND COMPANY PRIZE

Automatic Bilge Pump
Presented by A. G. Redmond Co.,
Flint, Michigan.

LOBEE PUMP & MACHINERY COMPANY PRIZE

Lobee Bilge Pump
Presented by Lobee Pump & Machinery Co.,
Buffalo, N. Y.

SCHEBLER CARBURETOR COMPANY PRIZE

2-in. Model "A" Schebler Carburetor
Presented by Schebler Carburetor Co.,
Indianapolis, Ind.

J. C. GOSS & COMPANY PRIZE

Set Code Signal Flags
Presented by J. C. Goss & Company,
Detroit, Michigan.

RAJAH AUTO SUPPLY COMPANY PRIZE

1 Doz. $\frac{7}{8}$ " Rajah Spark Plugs
Presented by Rajah Auto Supply Co.,
Bloomfield, N. J.

COMMODORE R. GEO. MARSH PRIZE

Silk Yacht Club Flag
Presented by Commodore R. Geo. Marsh,
Detroit, Michigan.

CLEVELAND PLAIN DEALER PRIZE

Silver Flask
Presented by Cleveland Plain Dealer,
Cleveland, Ohio.

PATTISON OIL COMPANY PRIZE

10 Gallons Premol High Speed Engine Oil
Presented by Pattison Oil Company,
Detroit, Michigan.

BOYDELL BROTHERS PRIZE

Sufficient High Quality Enamel to Finish Class II Craft
Presented by Boydell Brothers,
Detroit, Michigan.

BOYDELL BROTHERS PRIZE

Sufficient High Quality Enamel to Finish Class III Craft
Presented by Boydell Brothers,
Detroit, Michigan.

EDWARD SMITH AND COMPANY PRIZE

1 Gal. Smith Yacht White, 1 Gal. Aquatite, 1 Gal. Spar Coating,
1 Gal. Buff
Presented by Edward Smith & Co., Long Island, New York,
and the Weisgerber Paint & Varnish Company, Detroit,
Michigan.

WEISGERBER PAINT & VARNISH COMPANY PRIZE

6 Gallons Lavico Spar Varnish
Presented by Weisgerber Paint & Varnish Co.,
Detroit, Michigan.

WEISGERBER PAINT & VARNISH COMPANY PRIZE

2 Gallons U. S. N. Buff Deck Paint
Presented by Weisgerber Paint & Varnish Co.,
Detroit, Michigan.

BERRY BROTHERS PRIZE

5 Gallons Assorted Luxeberry Spar and Enamel
Presented by Berry Brothers,
Detroit, Michigan.

BERRY BROTHERS PRIZE

5 Gallons Assorted Luxberry Spar and Berry Spar and Enamel
Presented by Berry Brothers,
Detroit, Michigan.

BERRY BROTHERS PRIZE

2 Gallons Bottom and Top Sides Paint
Presented by Berry Brothers,
Detroit, Michigan.

REMY ELECTRIC COMPANY PRIZE

One Klaxon Horn
Presented by Remy Electric Company,
Anderson, Indiana.

REMY ELECTRIC COMPANY PRIZE

One Klaxon Horn
Presented by Remy Electric Company,
Anderson, Indiana.

SUPER FYR FYTER PRIZE

Super Fyr Fyter
Presented by Fyr Fyter Company,
Dayton, Ohio.

ENTERPRISE OIL COMPANY, INC., PRIZE

Two 5-gallon Cans of Duplex Marine Engine Oil, Grade "X"
Presented by Enterprise Oil Co., Inc.,
Buffalo, New York.

LOU J. EPPINGER PRIZE

Split Bamboo Casting Rod
Presented by Lou J. Eppinger,
Detroit, Michigan.

COMMERCIAL MILLING COMPANY PRIZE

One Barrel Henkel's Flour
Presented by Commercial Milling Co.,
Detroit, Michigan.

COMMERCIAL MILLING COMPANY PRIZE

One Assorted Order of the Henkel Flour Products
Presented by Commercial Milling Co.,
Detroit, Michigan.

GRISWOLD FIRST STATE BANK PRIZE

Five Years' Rental of Safety Deposit Box to winner
Presented by Griswold First State Bank of Detroit,
Detroit, Michigan.

COLUMBIAN BRONZE CORPORATION PRIZE

24-in. Columbian Bronze Propeller
Presented by Columbian Bronze Corp.,
Freeport, Long Island, N. Y.

THE B. F. GOODRICH RUBBER COMPANY PRIZE

One Pair of Cutless Rubber Bearings for 1½" Shaft
Presented by the B. F. Goodrich Rubber Co.,
Akron, Ohio.

OVINGTON'S PRIZE

One Dozen Service Plates decorated with private flags of the
owner
Presented by Ovington's,
New York City, N. Y.

HYDE WINDLASS COMPANY PRIZE

One 24-in. diameter Three Blade Propeller
Presented by Hyde Windlass Company,
Bath, Maine.

FOAMITE CHILD'S PRIZE

2½ Gallon Foamite Fire Extinguisher Complete
Presented by Foamite Childs Company,
Detroit, Michigan.

MOTOR BOATING PRIZE

One Set Nautical and Yachting Books
Presented by Motor Boating,
New York City, N. Y.

M. L. OBERDORFER BRASS COMPANY PRIZE

One 6-Volt Automatic Bilge Pump
Presented by M. L. Oberdorfer Brass Co.,
Syracuse, N. Y.

TUTTLE & CLARK PRIZE

One Lunch Kit
Presented by Tuttle & Clark,
Detroit, Michigan.

WATERBURY CLOCK COMPANY OF ILLINOIS PRIZE

One Waterbury Ship's Bell Clock No. 10
Presented by Waterbury Clock Company,
Chicago, Illinois.

F. G. CLAYTON COMPANY PRIZE

One Bathing Suit
Presented by F. G. Clayton Company,
Detroit, Michigan.

AMERICAN STROMBOS COMPANY PRIZE

One Strombos Duplex Marine Equipment
Presented by American Strombos Company,
Philadelphia, Pa.

THE MITCHELL COMPANY PRIZE

Mitchell's Portable Phonograph
Presented by The Mitchell Company,
Detroit, Michigan.

SPARKS-WITHINGTON COMPANY PRIZE

One Sparton Chime Horn
Presented by Sparks-Withington Co.,
Jackson, Michigan.

GRINNELL BROTHERS PRIZE

One Portable Victrola
Presented by Grinnell Brothers,
Detroit, Mich.

MARTIN SPAR VARNISH CO. AND WEISGERBER PAINT & VARNISH CO. PRIZE

Two Gallons Martin's Spar Varnish
Presented by Martin Spar Varnish Co., Chicago, Ill., and
Weisgerber Paint & Varnish Co., Detroit, Mich.

O'BRIEN VARNISH CO. AND WEISGERBER PAINT & VARNISH CO. PRIZE

Two Gallons Master's Spar Varnish
Presented by O'Brien Varnish Co., South Bend, Ind., and
Weisgerber Paint & Varnish Co., Detroit, Mich.

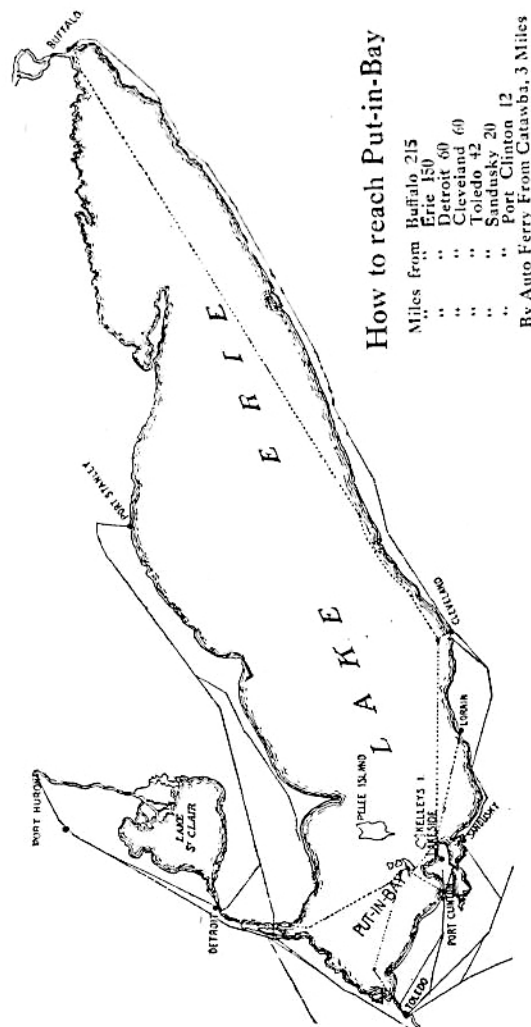
A number of Prizes were received too late to list the Donors' names. The Trophy Committee wishes to thank all these Donors, however, and to let them know that it appreciates their gifts greatly.

GENERAL INFORMATION

- ✓ Headquarters—Put-in-Bay Yacht Clubhouse.
- Secretary-Treasurer's office hours: 10:00 A. M. to 12:30 P. M.; 2:00 P. M. to 6:00 P. M.
- ✓ All yachtsmen and ladies must register.
- ✓ No entry fee will be charged in any event.
- Sign your entry and state clearly all answers to questions.
- Every yacht should be measured by the measurer of its home club and measurer's signature should be on entry blank.
- ✓ All yachtsmen of the Inter-Lake and invited clubs, whether yacht owners or not, are invited and urged to participate in all of the events of the week and have their ladies participate wherever possible, to make the week successful in every way.
- ✓ Get your entry in early to assist the committees.
- ✓ All schedules subject to change as necessary. Watch Bulletin Board.
- Obtain entry blanks, racing numbers and racing information at Headquarters.
- Postponements, changes in courses or events, results and all official announcements will be posted on the Bulletin Board at Headquarters. Watch it.
- Two or more entries must be received or an event will be cancelled.
- Prizes in any event will be awarded according to number of entrants. If two entrants, only one prize will be awarded; if three entrants, two prizes, etc.
- Ball Tickets, Banquet Tickets and Mardi Gras Dance Tickets may be purchased at Headquarters.
- Banquet Tickets.....\$2.00 per person
- Mardi Gras Dance..... 1.00 per person
- Yachtsmen's Ball..... 2.00 per couple
(Extra Lady Free)
- ✓ NOTE: Limited number of banquet tickets only—GET YOUR BANQUET TICKETS AT ONCE.
- ✓ The Official Time used at meet will be Put-in-Bay Yacht Club Time, according to clock at Headquarters.
- ✓ All events of Regatta will be started promptly on time. BE ON YOUR MARK.
- Do not forget your costume for the "Mardi Gras."

REGISTER AND GET YOUR BADGE

Every Registered Yachtsman and Lady will be given an identification badge, which entitles them to draw for prizes. There will be a drawing for prizes at the Yachtsmen's Ball on Thursday evening. You must be present at the Ball to claim any prize awarded. The Club registering the largest number of members will receive a Silk Club Flag, donated by Commodore R. George Marsh. Help your Club win the Flag.



CONDENSED PROGRAM

MORNING

SUNDAY, JULY 10TH.

Long Distance Sail Yacht and Power Boat Races—All Classes.
 Registration at I.-L. Y. A. Headquarters.
 Bob-Lo Island to Put-in-Bay, D. R. Y. A.
 Rocky River to Put-in-Bay, C. Y. C.
 Maumee River to Put-in-Bay, T. Y. C.
 Power Boat—Cleveland to Put-in-Bay, C. B. C.

MONDAY, JULY 11TH.

9:00—Committee meeting at Headquarters.
 All Committeemen please attend.
 10:00—Baseball Game.

TUESDAY, JULY 12TH.

8:30—Sail Yacht Races, All Classes.
 9:30—Out Board Motor Races.

WEDNESDAY, JULY 13TH.

8:30—Sail Yacht Races, All Classes.
 9:30—Out Board Motor Races.

THURSDAY, JULY 14TH.

8:45—Power Boat Races, All Classes.
 9:30—Out Board Motor Races.

FRIDAY, JULY 15TH.

8:30—Sail Yacht Races, All Classes.

SATURDAY, JULY 16TH.

Disbanding of Fleet.

AFTERNOON

Registration at I.-L. Y. A. Headquarters.
 All Classes.

3:00—Shore Games, Yachtsmen and ladies.
 4:00 to 5:30—Open house aboard the Flagship.
 All registered yachtsmen invited to attend.

1:45—Power Boat Races, All Classes.

1:45—Power Boat Races, All Classes.
 2:00—Ladies' Lawn Party, Bay View Hotel.

12:30—Swimming Championships.
 2:00—Squadron Sail.
 4:00—Novelty Races.

EVENING

Services St. Paul's Church.

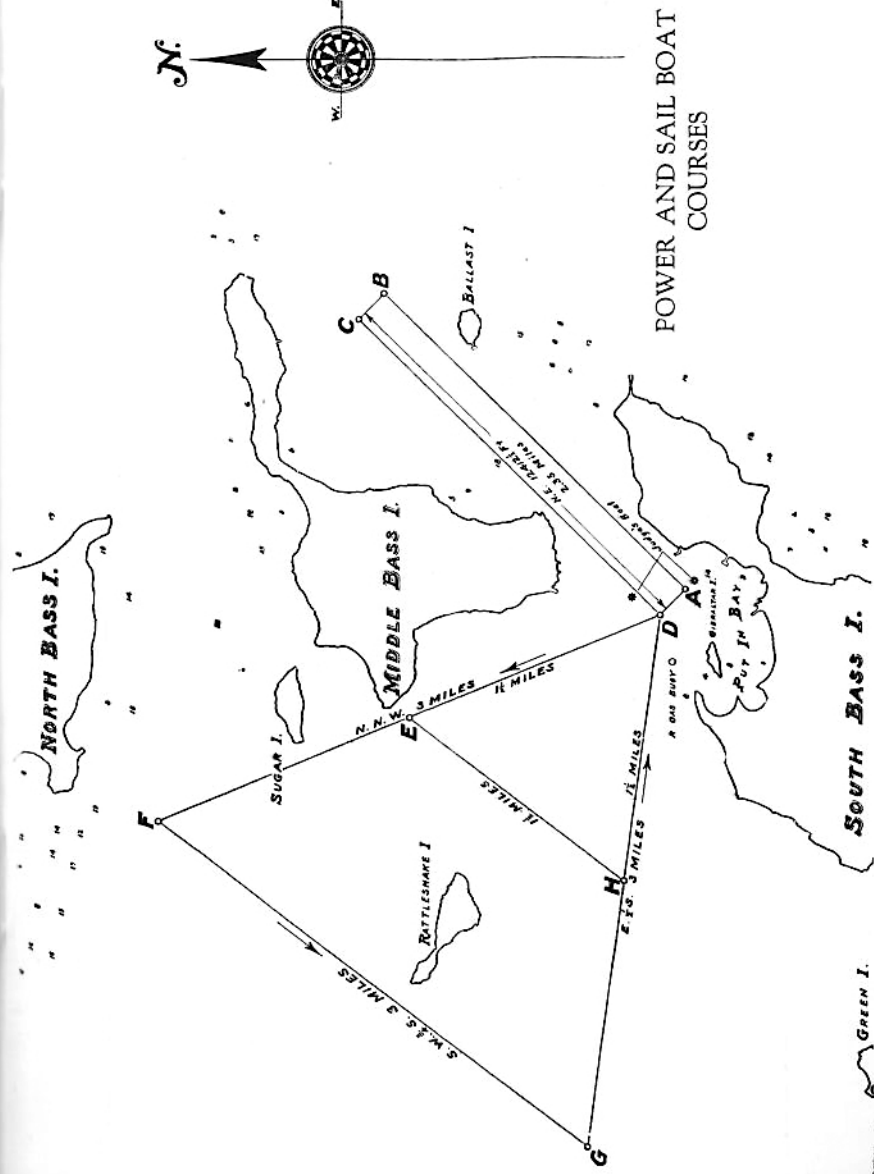
6:30—Yachtsmen's Dinner, Hotel Crescent.
 Bring the ladies.

8:30—Commodore's Reception aboard Steamer
 "Chippewa," Dancing.

8:00—Parade formation at Town Hall.
 8:30—MARDI GRAS PARADE.
 9:00—Grand Carnival and Dance at Colonial.

9:00—Yachtsmen's Ball, Colonial Pavilion.

8:00—Distribution of Prizes, Hotel Crescent.



SAIL YACHT PROGRAM

Classifications

U—Universal
 C—One-design Sloops
 CC—Cabin Cats
 K—15 ft. Cats (Private Owned)
 CK—15 ft. Cats (Club Owned)
 D—Dinghies
 R—Sloops
 Sch.—Schooners
 S—Star Class
 Y—Yawls

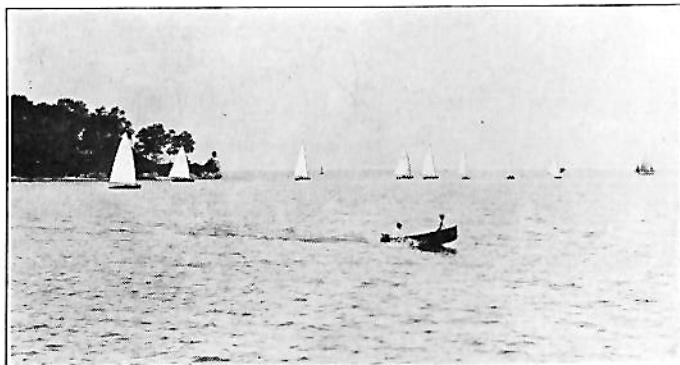
STARTING TIME—SAIL YACHTS

Warning Gun.....	8:30 A. M.		
Preparatory Gun.....	8:45 A. M.		
Start Class "R".....	8:55 Long Course		
" " "U".....	9:00 " "		
" " Sch.....	9:05 " "		
" " "Y".....	9:10 " "		
" " "C".....	9:15 Short Course		
" " "S".....	9:20 " "		
" " "K".....	9:25 " "		
" " "CK".....	9:30 " "		
" " "CC".....	9:35 " "		
" " "D".....	9:40 " "		

The Universal Class will be divided into divisions A, B and C, according to rating; but will start together as one class at 9:00 A. M.

SCHEDULE OF RACES

Tuesday A. M.—All Classes.
 Wednesday A. M.—All Classes.
 Thursday P. M.—Ladies' Cat Boat Race. Commodore's Cat Boat Race.
 Friday A. M.—All Classes.



White Wings and Tender

RULES

Certificate of measurement must be filed with entry. The Sail Yacht Regatta Committee reserves the right to order any yacht entered remeasured.

Races for all classes, starting five minutes apart on Tuesday, Wednesday and Friday mornings; starting first class at 8:55 A. M.

All races under Y. R. U. and I.-L. Y. A. Rules, as amended to date.

In Class CK championship flag goes to skipper making highest percentage, cup to club having highest percentage with three boats.

Entries for all point races must be made with Sail Yacht Regatta Committee at headquarters before 6:00 P. M. Monday, July 11th, unless competing yacht arrives too late to enter before this time.

Alterations of the race program or sailing course may be made at the discretion of the Sail Yacht Regatta Committee. Such changes will be posted on Bulletin Board.

Numbers must be carried by each yacht on each side of its mainsail. These numbers will be supplied by the Sail Yacht Regatta Committee at Headquarters.

No person other than the Judges, Regatta Committee and Clerks will be allowed on Judge's boat without the consent of the Chairman of the Sail Yacht Regatta Committee.

All stakes to be left to port unless changed by Regatta Committee. If the Regatta Committee decides to reverse the course and have stakes left to starboard, a green flag will be flown from Judges' boat. Red flag will mean all stakes to port. The Judges' boat will fly a white flag with blue letters R. C.

Guns must not be fired from any yacht within one hour of the time for starting races, and not until after every yacht has crossed the finish line.

All vessels following the races must keep to leeward, and at such distance as not to interfere with the maneuvers of the competing yachts.

The races are open to every yacht which complies with the rules and which is regularly enrolled in any club in the Inter-Lake Yachting Association, or which has been invited to participate in the races.

All boats sailing the long outside course will have four hours time limit.

All boats sailing the short inside course will have three hours time limit.

RULES COVERING CLASS "Y" (CRUISING YAWLS)

All yachts in this class will be governed by the Y. R. U. rules, and will obtain their measurement rating under the Y. R. U. rules (as adopted at Spring Meeting I.-L. Y. A., 1923); with following exceptions:

Use of pot lead or similar compounds prohibited.

Actual sail area shall be measured (not the forward triangle).

Measurements shall be determined with full cruising equipment aboard, and all such equipment shall be carried aboard throughout all races (not including dinghy).

Two per cent will be added to actual sailing time of yachts without engine as allowance to yachts with engine.

Yachts equipped with engine shall have engine sealed.

There will be no restrictions on the number of passengers carried in this class in the races.

CLASS STAR: Rules of the Star Class Yacht Racing Association to govern.

TIME ALLOWANCE

Time allowance will be computed on yachts in Classes U, Y and SCH, under the formula and table of the Yacht Racing Union, 1923 Rules.

WATCH BULLETIN BOARD

There will be a Bulletin Board at Headquarters, where changes in program and special instructions will be posted throughout the week.

All yachts whose preparatory gun has not been fired must keep clear of starting line. Any yacht willfully violating this rule will be disqualified.

SAILING COURSES

The course for all series races for sailing yachts in Classes U, R, SCH and Y will be triangular, starting from a line between a flag buoy off the east end of Gibraltar Island and a similar flag buoy in line with the west end of Middle Bass, to and around a stake three nautical miles N. N. W., thence to and around a stake three nautical miles S. W. three-quarter S., thence to and around a stake three nautical miles, E., one-half S. to and across starting line between starting stakes. In finishing yachts must cross the starting line in the opposite directions from which they start. All stakes must be left to port, unless otherwise ordered by the Sail Yacht Regatta Committee, as heretofore provided.

The course for Classes Star, C, K, CC, CK and Dinghys, starting from the same line, will be a shorter triangle with the same compass courses, but with one and one-half miles to the side, or a total of four and one-half nautical miles.

MANUAL

Inter-Lake Yachting Association

A technical work on yachting, comprising all the rules on navigation and racing.

Last Edition Only 1250 Volumes Published
Should be in 1250 yachtsmen's libraries, get yours now, \$1.00

Write

**Leo J. Monahan, City Comptroller's Office
Detroit, Mich.**

POWER BOAT EVENTS

Class	Classification
	Type
A	Open boats.
M	Matthews 38 handicap.
E	Cruisers measuring under 40 feet.
F	Cruisers measuring 40 to 60 feet.
G	Cruisers measuring 60 feet and over.
H	Express cruisers.
B	Outboard motor class.
C	Outboard motor class.
	650 cubic-inch restricted class stock runabouts.
	510 cubic-inch restricted class stock runabouts.
	151 cubic-inch restricted class hydroplanes.
	Interlake chance race.

TUESDAY, JULY 12TH, 1927

Preparatory Gun at 1:30 P. M.

Class	Start	Dis.	Type of Boats
A	1:45	10 Mi.	Open boats.
M	1:50	10 Mi.	Matthews 38 handicap.
E	2:10	10 Mi.	Cruisers 40 and under.
F	2:20	10 Mi.	Cruisers 40 to 60.
G	2:30	10 Mi.	Cruisers 60 and over.
H	2:40	10 Mi.	Express cruisers.
650	3:00	20 Mi.	650 cu. in. stock runabouts.
510	3:30	20 Mi.	510 cu. in. stock runabouts.
151	4:15	10 Mi.	151 cu. in. hydroplanes.

WEDNESDAY, JULY 13TH

Preparatory Gun at 1:30 P. M.

Class	Start	Dis.	Type of Boats
A	1:45	10 Mi.	Open boats.
M	2:00	10 Mi.	Matthews 38 handicap.
E	2:15	10 Mi.	Cruisers 40 and under.
F	2:30	10 Mi.	Cruisers 40 to 60.
G	2:45	10 Mi.	Cruisers 60 and over.
H	3:00	10 Mi.	Express cruisers.
650	3:30	20 Mi.	650 cu. in. stock runabouts.
510	4:00	20 Mi.	510 cu. in. stock runabouts.
151	4:30	10 Mi.	151 cu. in. hydroplanes.

THURSDAY, JULY 14TH

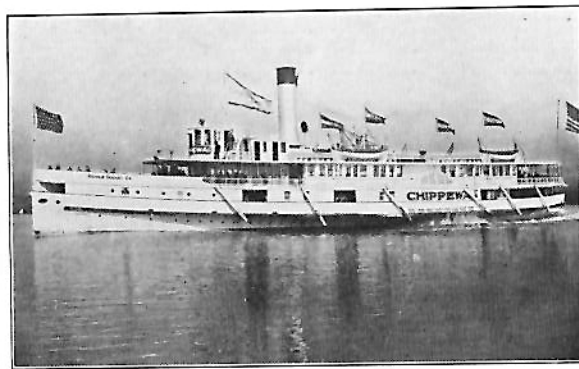
Preparatory Gun at 8:45 A. M.

Class	Start	Dis.	Type of Boats
A	9:00	10 Mi.	Open boats.
M	9:15	10 Mi.	Matthews 38 handicap.
E	9:45	10 Mi.	Cruisers 40 and under.
F	10:00	10 Mi.	Cruisers 40 to 60.
G	10:15	10 Mi.	Cruisers 60 and over.
H	10:30	10 Mi.	Express cruisers.
650	10:45	20 Mi.	650 cu. in. stock runabouts.
510	11:15	20 Mi.	510 cu. in. stock runabouts.
151	11:45	10 Mi.	151 cu. in. hydroplanes.
	2:00 p. m.		Squadron Sail.
	3:30 p. m.		I.-L. Y. A. Chance Race, 10 Miles—Immediately after Squadron Sail.
	4:00 p. m.		Free-for-All Runabouts and Hydroplanes.

POWER BOAT RACING RULES

1. Entries for all Power Boat Races must be filed before July 11, 1927, 6:30 P. M.
2. All boats to be measured by the measurer of their home club.
3. Certificates of measurement must be filed with entry, and the Regatta Committee reserves the right to re-measure.
4. Races for each class shall consist of three heats: the first heat will be run under A. P. B. A. racing rules; the second and third heat will be a handicap race with limit boat starting first.
5. All boats in a class in first heat will start at the same time and handicaps allowed by allowing time in the corrected time.
6. The boat making the most points in the three scheduled races for the class shall be declared the winner. Points to be awarded. One point for starting and one point for every boat defeated, it being assumed for the purpose of this computation that the number of starters are same in each heat.
7. The starting time of each boat in the second and third heat will be posted on Bulletin Board two hours before start of race.
8. In case of tie for points, the race shall be awarded to the boat which has covered the course in the best total corrected time.
9. 510 cubic inch and 650 cubic inch restricted class races open only to stock runabouts with regular motors as advertised and sold.
10. 151 cubic inch hydroplane race not open to boats equipped with superchargers.
11. Free for all race, open to all runabouts and hydroplanes.

NOTE: All power boat owners, especially those having fast runabouts, are respectfully requested to stay off the sailing course during sailboat races. Please observe this rule.



Str. "CHIPPEWA"

The Commodore's reception will be held on Tuesday evening, July 12th, at 8:30, aboard the Steamer "Chippewa"

OUT BOARD MOTOR RACES

CLASSES

Motors are divided into classes, as follows:

- B—Including 14 cu. in. and under 20 cu. in.
- C—Including 20 cu. in. and under 30 cu. in.

All motors to be standard.

Tuesday, July 12th.

Class B— 9:30 A. M. Warning gun— 9:40 Starting gun.
Class C—10:30 A. M. Warning gun—10:40 Starting gun.

Wednesday, July 13th.

Class B— 9:30 A. M. Warning gun— 9:40 Starting gun.
Class C—10:30 A. M. Warning gun—10:40 Starting gun.

Thursday, July 14th.

Class B— 9:30 A. M. Warning gun— 9:40 Starting gun.
Class C—10:30 A. M. Warning gun—10:40 Starting gun.

All entries must be made out at the Headquarters or mailed to Chairman of Out Board Committee.

Each boat entered for a sanctioned race must be the bona fide property of, or under charter to, the person in whose name she is entered, who must be an amateur member of a club belonging to the Association (Racing Rules III Article I, I.-L. Y. A.). The course is a straight away of $\frac{1}{2}$ mile, 6 times around or 6 miles. Race horse start to be used for each race. Each entry must notify the judges of his entry thirty minutes before each race.

The boat making the most points in the three scheduled races for the class shall be declared the winner. Points to be awarded. One point for starting and one point for every boat defeated, it being assumed for the purpose of this computation that the number of starters are the same in each heat.

Parts may be removed but no parts may be added save those needed to avoid fire or to prevent cavitation and these shall not include any working parts.

Prizes to be awarded for each class.

P. S.—Outboard Motor Boats must use mufflers in harbor, except when competing in races.

Inter-Lake Yachting Assn.

Territory Program for 1927



BUFFALO, N. Y.

Northrop Trophy Races.....July 2-3-4
Buffalo Lunch Club Regatta.....Aug. 12-13

CLEVELAND, OHIO

C. Y. C. Race to Put-in-Bay.....July 10
C. M. Y. A. Regatta.....July 22-23-24

DETROIT, MICH.

D. R. Y. A. Long Distance Race—Amherst-
to Put-in-Bay.....July 10
D. Y. C. Regatta.....Aug. 13
E. B. C. Regatta.....Aug. 20
D. Y. C. International Motor Boat Sweep-
stakes.....Sept. 3-4-5
D. Y. C. 30th Annual Sweepstakes.....Sept. 10
B. Y. C. Long Distance Race.....Sept. 17

PORT HURON, MICH.

B. Y. C. Mackinac Race.....July 23

PUT-IN-BAY, OHIO

I.-L. Y. A. 34th Annual Regatta.....July 10-16

TOLEDO, OHIO

Richardson Cup Races.....July 7-8-9

WALKERVILLE, ONT.

W. B. C. Regatta.....Aug. 27

BAY VIEW HOUSE

Fishing - Boating - Bathing - Dancing
CHICKEN and FISH DINNERS

Adjacent to the Yacht Club

J. J. DAY, Proprietor

Where Good Food and Good People Meet

Pages 27-28 missing? ☒

Sunday, July 10th, 1927.

All Day Registration at I.-L. Y. A. Headquarters.
7:00 p. m. Services at St. Paul's Church.

Monday, July 11th, 1927.

9:00 a. m. Meeting of all Committees at I.-L. Y. A. Head-
quarters, Put-in-Bay Yacht Club. ALL COMMITTEE
MEN MUST ATTEND.

10:00 a. m. Baseball Game.

3:00 p. m. Shore Games, Races, Etc.

4:00 p. m. to 5:30. Reception on board Commodore's Flagship.
All registered Yachtsmen invited to attend.

6:30 p. m. Yachtsmen's Dinner and Entertainment at Hotel
Crescent. Bring the ladies. Get your tickets in ad-
vance at Headquarters.

REGATTAITES! You can obtain Canvas Foot-
wear, Middy Hats, Blouses and Duck Trousers,
also Drugs and Toilet Articles at

E. OELSCHLAGER STORE

GENERAL MERCHANDISER

Phone 18

Put-In-Bay, Ohio

"THE COLONIAL"

DANCING BOWLING

Up-to-Date Lunch Room

Short Orders Our Specialty

Open Day and Night—Music While You Eat

Put-In-Bay, Ohio

Tuesday, July 12th, 1927.

- 8:30 a. m. Sail Yacht Races. All Classes.
- 9:30 a. m. Out Board Motor Races.
- 1:45 p. m. Power Boat Races. All Classes.
- 8:30 p. m. Commodore's Reception aboard Str. Chippewa.
Dancing.

Wednesday, July 13th, 1927.

- 8:30 a. m. Sail Yacht Races. All Classes.
- 9:30 a. m. Out Board Motor Races.
- 1:45 p. m. Power Boat Races. All Classes.
- 2:00 p. m. Ladies Lawn Party at Bay View Hotel. (Ladies be sure to register at Headquarters and obtain identification badge before attending party.)
- 8:00 p. m. Formation of Parade at Town Hall.
- 8:30 p. m. Mardi Gras Parade.
- 9:00 p. m. Grand Carnival and Mardi Gras Dance at Colonial.
- 1:00 a. m. Good Night.

McCANN'S BARBER SHOP

"Service Our Motto"

Laundry and Dry Cleaning

The Yachtsmen Know "Mac"

Put-In-Bay, Ohio

Patronize Our Advertisers

PUT-IN-BAY AUTO FERRY

CATAWBA ISLAND

to

PUT-IN-BAY ISLAND

DAILY SCHEDULE

June 25th to September 5th, 1927

Leave Catawba 10:30 A. M., 2:15 and 6:00 P. M.

Leave Put-in-Bay* 9:00 A. M., 12:45 and 4:30 P. M.

*Monday Morning 7:00

Thursday, July 14th, 1927.

- 8:45 a. m. Power Boat Races. All Classes.
- 9:30 a. m. Out Board Motor Races.
- 12:30 p. m. Swimming Championships.
- 2:00 p. m. Squadron Sail.
- 4:00 p. m. Novelty Races.
- 9:00 p. m. Yachtsmen's Ball, Colonial Pavilion. (Get your tickets in advance at Headquarters.)

Friday, July 15th, 1927.

- 8:30 a. m. Sail Yacht Races. All Classes.
- 8:00 p. m. Distribution of Prizes, at Hotel Crescent Gardens.

WM. KIINZLER

Mechanic and Garage

Storage Batteries, Pipe Fitting and
Gas Machines

Boat and Auto Repairs and Supplies
High Test Gasoline and Oils

Put-In-Bay

Ohio

Patronize Our Advertisers

The Yachtsmen Will Appreciate Knowing

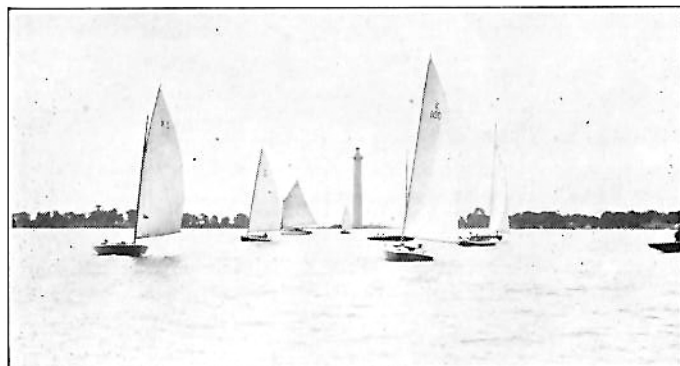
THE PARK HOTEL

Is Still Operating Its Splendid

Dining Service

Make Reservations Early

Lucas Meyers, Prop. Put-In-Bay, Ohio



"K" Class on Put-In-Bay

Glacial Rock Ginger Ale

Dry and Old Style—A Distinctive Quality

Put-In-Bay Bottling Works

ICE CREAM

SOFT DRINKS

N. H. Laad, Prop.

Phone 25-W

Patronize Our Advertisers

HERBSTER'S GIFT SHOP

Souvenirs, Novelties, New View
Post Cards

Fine Lots for Sale in the Lake View Allotment

Crosley Radio and Service

H. A. Herbster, Prop.

Put-In-Bay, Ohio

PUT-IN-BAY

Put-in-Bay Island is situated well out in Lake Erie, a sufficient distance from mainland to insure cool, fresh air at all times.

It is large enough to warrant each one the pleasure he seeks without interference with or from others, thus enabling one to enjoy, without restraint, the fullest individual freedom.

The walks and drives, shady dells, rock formations, caves, bathing beach, dancing, bowling, boating, fishing, automobiling, fish hatcheries, light house, vineyards and green forests present an ever changing panorama which delights the eye, invigorates the body and brings the blush of youth to the pale cheek of the fagged-out city dweller.

50 ROOMS AT

Smith's Cottage

Spring Chicken Dinners Our Specialty

Seating Capacity 125

B. L. Smith, Prop.

Put-In-Bay, Ohio

ARBOR INN

Soft Drinks—Cigars—Cigarettes

Put-In-Bay

Ohio

Patronize Our Advertisers

IN ALL THE WORLD, ONLY ONE GRAYHAVEN

*To Own a Home in***GRAYHAVEN***is to have Boating, Bathing, Water Sports right at your door*

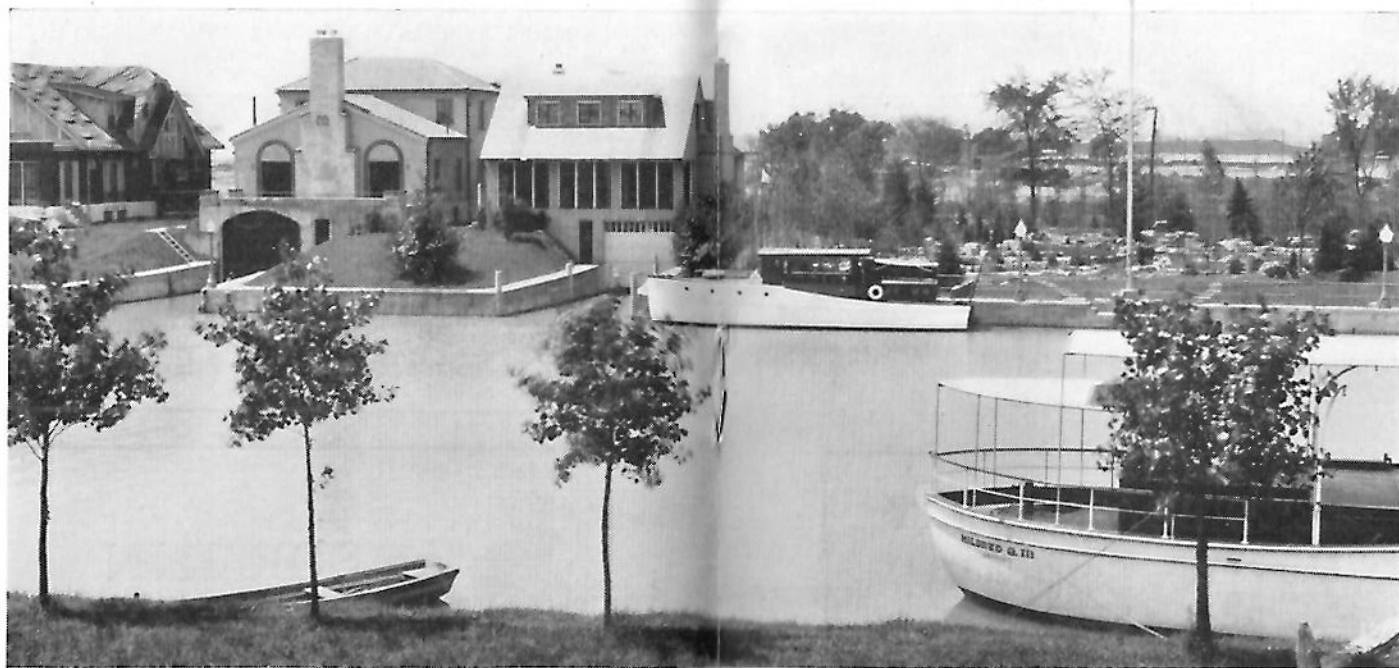
Plunge in the rolling surf of the river or swim in the sheltered water of the canals; park your car or moor your boat in your own basement boatwell, or zip down the canals and out into Lake St. Clair.

The finest homes in Detroit are being built in Grayhaven. This private Venetian colony possesses more exclusive features than Grosse Pointe, Indian Village, Palmer Woods or Bloomfield Hills combined. Nowhere in the whole world is there another community like it—where city conveniences meet shore and suburban surroundings and embody the privacy and exclusiveness of a private estate.

The entire property is being fenced in with a wall of climbing roses a mile long. Gated entrances to each of the private drives are being provided. Inter-communicative telephones from the entrances to each residence will be installed, thus protecting the dwellers in this wonder community from outside intrusion.

Away from the dirt, heat and roar of the city, and yet, just twenty minutes from the heart of it. Choice sites are still available. Come out and inspect the property.

*A \$20,000,000
Water-Front
Residential
Community*

**EDWARD GRAY, Owner**

• Foot of Kitchener Ave. •

Lenox 4585

HOTEL COMMODORE

Under the Management of Mrs. Susie Sands

**American and European Plan
Fine Dining Room and Restaurant***The Only Lake Front Hotel***PUT-IN-BAY****OHIO**

Pick the Winner

MILLER'S BOAT LIVERY

Launches -- Rowboats

RETAIL ICE**We Will Take You Anywhere—Anytime****PHONE 42-W***Patronize Our Advertisers***Put-in-Bay Cafeteria****"Jim's Place"**Most Up-to-Date. Prices Very Reasonable.
Parties by Arrangement.*Special Rates for Inter-Lake Yachtsmen***J. A. Poulos, Prop.****Put-In-Bay, Ohio****PERRY MEMORIAL**

The Perry Memorial, a monument built by moneys contributed by the States of Ohio, Pennsylvania, Michigan, Illinois, Wisconsin, New York, Rhode Island, Kentucky, Minnesota, Louisiana, the United States Government and Canada. It is an international shaft, 365 feet high, built in commemoration of 100 years of peace between Great Britain and United States. It is the offering of the American and British people to the memory of Oliver Hazard Perry, who so gallantly, with his forest-hewn war vessels, defeated an English fleet, commanded by the intrepid Englishman, Admiral Barklay, in 1813.

A modern electric elevator, which runs at a speed of 250 feet per minute and is equipped with safety devices, so that there is absolutely no danger of its falling, carries you to the top. Strong field glasses are provided. On a clear day one can see far into Canada, and to the mouth of the Detroit River. A view from this monument is one ever to be remembered.

DEVELOPING**PRINTING****O. G. HERBSTER***Photographer***Put-In-Bay, Ohio****KODAKS****FILMS***Patronize Our Advertisers*

The Rittman Market
"GOOD THINGS TO EAT"
 Put-In-Bay, Ohio

Compliments of
Conlen Cottage
"A Good Home Ashore"
 Put-In-Bay, Ohio

ROUND HOUSE
SANDWICH SHOPPE
Plate and Quick Lunches
"The Original Hot Hamburger"

C. E. Seibert Put-In-Bay, Ohio

SAILORS ATTENTION
 Your ICE CREAM, SODA,
 CANDY and SMOKES
 await you at
SMITH'S ICE CREAM PARLOR
 Put-In-Bay, Ohio

Patronize Our Advertisers

BARNACLES—PAST AND PRESENT

By Aaron DeRoy

Captain Kidd of the D. Y. C. Barnacles

The first Barnacle's name has been lost in the antiquity of the ages; even the oldest members of the present organization can not recall the facts surrounding the organization of this ancient order, nor can they even imagine at the possible tragic demise of those early members, so far back does the history of the Barnacles now date. Suffice it, however, that one Captain "Kidd" long known and recognized as a pirate of no mean piratical ability was chosen as the character to be emulated by those who from year to year conduct the affairs of the various Barnacles groups. The present history of the organization is within the memory of many and a brief resume of the present organization may not be remiss at this time.

The first chapter of Barnacles was organized at the Detroit Yacht Club and Dr. Chas. Colter was selected for his sanguinary reputation to lead one of the most militant aggregations that ever trod the quarter deck or conducted a misspent life in the forecabin. This was in 1922. In founding the organization in Detroit the assistance of the Milwaukee Yacht Club was solicited and obtained. After a brief but mediocre career Colter's regime was succeeded by one, Harold Aarons. Following him came Dr. Wilson, who has since risen to great honor among Yachtsmen of the Inter-Lake. Then followed the peaceful constructive reign of Hugh Ferry as Captain Kidd. Then across the scrolls of the pirate crew was written the name of Captain Kidd "Lou Tanney."

The Toledo chapter was organized during the late days of the Ferry administration and numerous other chapters were added, such as the Walkerville Boat Club, Edison Boat Club, one at the Masonic Country Club, Toledo Yacht Club, Maumee River Yacht Club, Ottawa River Yacht Club, Corinthian Yacht Club, Cleveland. Those from the nucleus first established at the Yacht Club spread groups of this piratical order, whose aims and ideals have been in marked contrast to the blood-thirsty appearance and swashbuckling carriage of its members.

Each group thus organized has committed itself to a definite proposition, that of bringing unified brotherhood to Yachtsmen and to assisting wherever possible the aims of the club of which they are members.

Put-in-Bay has seen the Barnacles gather and hold their annual meetings, furthering the aims of the various I.-L. Y. A. Commodores, to make this annual event at the Bay colorful and highly successful. This year's Regatta will mark a new pinnacle of achievement of the Barnacles both in numbers present and in the breadth and scope of their own ideals and the furtherance of Yachting enthusiasm.

Where once only the D. Y. C. Barnacles foregathered at the Bay, this year will see their numbers multiplied by those Clubs which have capitulated to the onslaughts of the doughty hosts.

NOTICE

Yacht Clubs, Associations, Barnacles, Stores, Companies and Individuals, are requested to put representative FLOATS in the Mardi Gras Parade, on Wednesday Evening, July 13th. Suitable prizes for the best floats will be presented at the Mardi Gras Dance at 11:00 p. m., Colonial Pavilion.

Detroit as a Real Center of Boating

Government registrations of power boats in Detroit and vicinity show 2,106 open launches and runabouts, 377 cruisers and 191 auxiliary sail yachts. The Detroit Yacht Club, as a nucleus for this unrivaled boating activity, offers its monthly magazine as the best medium to reach a very fertile buying field.



Space rates on application
Sample copy furnished by request



The Main Sheet

3101 Woodward Avenue
DETROIT

Patronize Our Advertisers

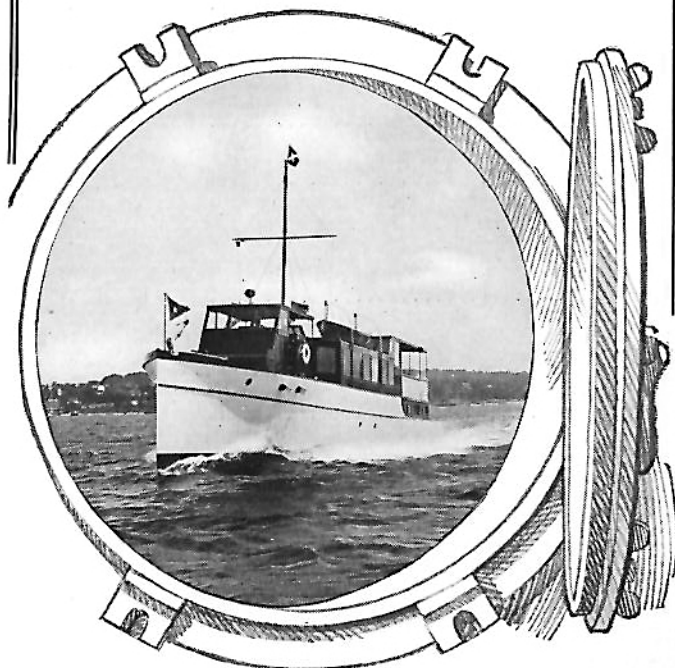
CONSOLIDATED BUILT BOATS

More than 3,000 successful pleasure boats of all sizes have been built. Consolidated is the largest maker in America.

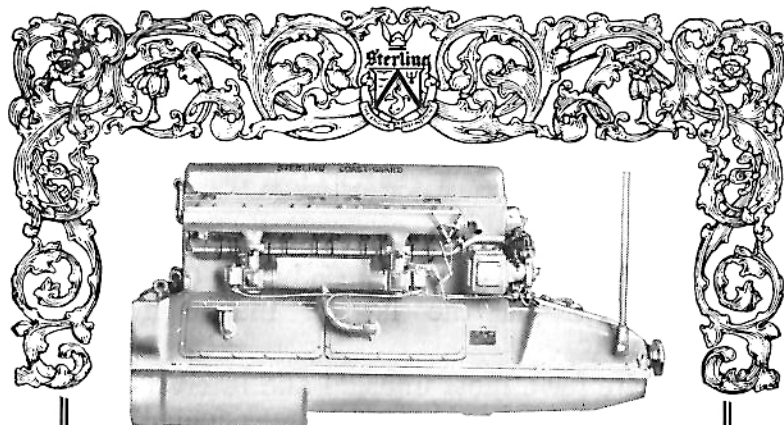
Write for a most unusual and interesting book entitled "Concerning Yachts," which will be sent gratis.

CONSOLIDATED SHIPBUILDING CORPORATION

Morris Heights, New York



Patronize Our Advertisers



Sterling Models Include:

- Dolphin Special, 4 and 6 cyl. engines for racing and fast runabouts.....180-290 H. P.
- Dolphin 4, 6 and 8 cyl. engines for faster cruisers and runabouts.....125-300 H. P.
- Dolphin Medium 4, 6 and 8 cyl. engines for medium speed cruisers and fishing boats..... 72-220 H. P.
- Trident 4, 6 and 8 cyl. slow turning engines for heavy cruisers, work boats and auxiliaries..... 30-126 H. P.
- Viking, built only in 6 cylinders for fast cruisers, heavy boats, 50 to 150 ft. long.....100-300 H. P.
- Seagull, built only in 6 cylinders for runabouts and cruisers..... 150 H. P.
- Coast Guard, built only in 6 cylinders for heavy cruisers, express cruisers and house boats.....100-300 H. P.
- Chevron, 4 and 6 cyl. engines for cruisers 36 ft. and larger..... 25-130 H. P.
- Neptune, 2 cylinders, 4 cycle, for cruisers, auxiliaries, fishing and trolling boats..... 12- 15 H. P.
- Petrel, 6 cylinders, for runabouts and cruisers..... 150 H. P.



STERLING ENGINE COMPANY

1270 Niagara Street

Buffalo, N. Y.

Patronize Our Advertisers

Belle Isle Boats



SUPER BEAR CAT

30 ft. long. 7 ft. beam 40 m. p. h.

A SUMMER HOME AFLOAT

Row
Boats

Canoes

Speed
Boats



Marine
and
Out-
board
Motors
All
Makes

28-38-46 ft. \$4350 to \$8850

HACKER BOATS

22-24-26-28 ft. \$2550 to \$4950

New and Used Boats Marine Hardware
Marine Ways and Repairs

BELLE ISLE BOAT AND ENGINE CO.

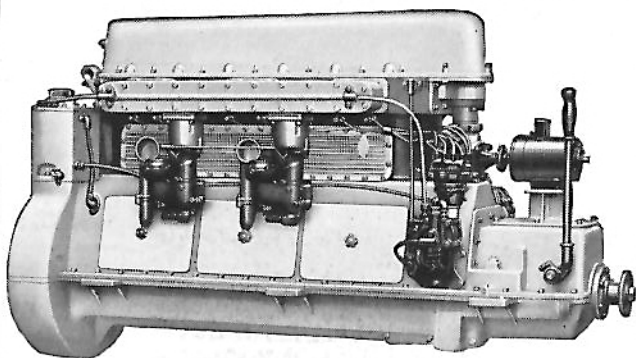
BUILDERS OF THE BELLE ISLE BEARCAT
YACHT BROKERS

Sales
500 E. Jefferson

Factory and Service
Motor Boat Lane
9662 E. Jefferson

Patronize Our Advertisers

"A Kermath Always Runs"



The 150 H. P. Model

Kermath Has Never Compromised with Quality

THE increasing prestige of Kermath Marine Engines is due entirely to the policy of using the finest materials obtainable and combining this with correct design and the best possible workmanship. Ask any yachtsmen how he regards a Kermath. Today more than 80% of the standardized boat builders specify Kermath.

Individual Sizes for Definite Requirements

3 H. P.	4.5 H. P.	6.8 H. P.	8-10 H. P.
12 H. P.	16 H. P.	20 H. P.	35 H. P.
50 H. P.	70 H. P.	65 H. P.	100 H. P.
150 H. P.			

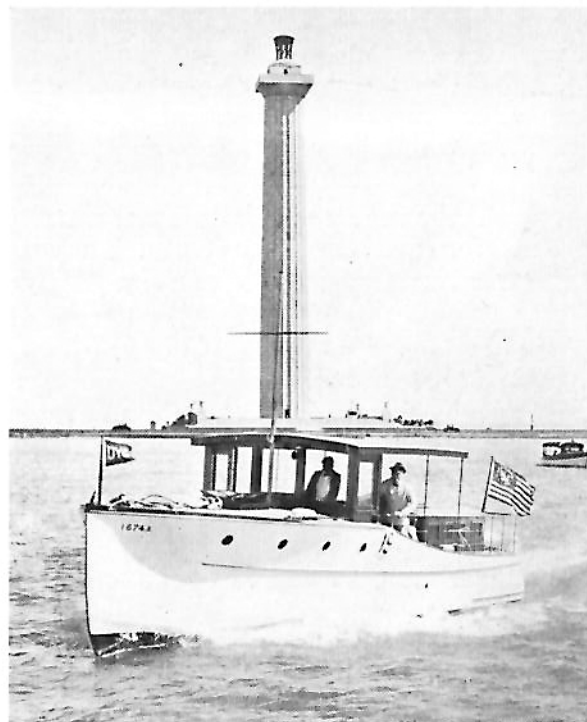
\$135 to \$2300

Kermath Mfg. Company

5890 Commonwealth Ave.

Detroit, Mich.

Patronize Our Advertisers



When You Select a Liggett You Choose the Best

NOTE the handsome flare of Liggett Cruisers—see how smart they ride. Here you have a combination of good taste in planning coupled with fine lines and beautiful riding qualities. You'll not be disappointed when you choose a Liggett Cruiser.

40 Ft. Kermath Powered \$10500

52 Ft. Kermath Powered \$22500

A. G. Liggett & Son Co.

WYANDOTTE, MICHIGAN

Patronize Our Advertisers



There Goes A Watercar!

AT the regattas this summer watch for the Dodge Watercars. They'll be entered in most of them—they make wonderful one-design racing—can run rings around any boats of anywhere near their power.

But notice particularly their luxury and the hundreds of utilitarian services they perform. Notice their reliability, their seaworthiness in rough water, their lines and fitment.

Designed by George F. Crouch, creator of Baby Bootlegger, Teaser, Miss Massachusetts I, Nuisance Too, Miss Syndicate, Horace, the Peter Pans, Cinderellas and numerous other great boats you've seen in action.

The Dodge ~ Watercar

The Boat of a Thousand Uses

In four beautiful models—22½ to 30 feet,
20 to 45 miles per hour, 7-14 passengers,
\$2,195 to \$7,200.

Write for the "Book of the Dodge Watercar," one of the most interesting motorboat brochures ever published.

Dodge Watercars
THE GREATEST BUY
In the Motorboat World

Horace E. Dodge Boat Works, Inc.
598 Lycaste Ave. Detroit, Mich.



Patronize Our Advertisers

THE NORTHRUP TROPHY



The outstanding cup foundation for 1927 is undoubtedly the fund set aside by Mrs. Seymore H. Knox, Jr., of Buffalo, N. Y., for the Northrup Cup, to be competed for annually by the now numerous and popular "R" class.

In presenting this Trophy to the Inter-Lake Yachting Association, Mrs. Knox desires to perpetuate the memory of her father, the late Captain Louis G. Northrup, of the Buffalo Canoe Club, whose activities in the I.-L. Y. A. are well remembered by its older members.

The fund is endowed by sufficient money to enable the Committee to purchase a large cup and also, each year, present to the winner a replica of the original.

The deed of gift states that the Cup will be held for one year by the winner, instead of the Club, thus giving personal incentive to "R" class racing.

Telephone Trenton 284

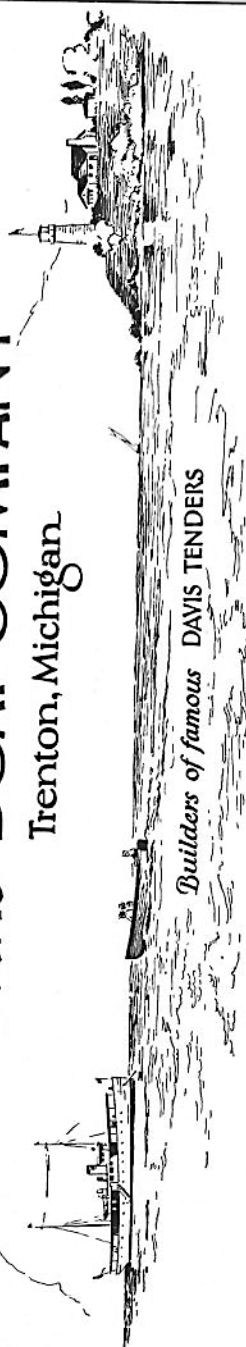
DAVIS BOAT COMPANY

Trenton, Michigan

Builders of famous DAVIS TENDERS

Building Docking
 Repairing Motor
 Storing Sail

SETH C. DAVIS
 Res. Phone, Detroit
 Lenox 5649



Patronize Our Advertisers

Hackercraft



28-foot Dolphin-Deluxe

The best built, finest-equipped, and most seaworthy runabout in America. The added length makes it the ideal runabout for open waters. Speed--close to forty miles. \$4950 completely equipped.



24-foot Dolphin

The "Aristocrat" of the smaller boats. The most seaworthy and best performing runabout under 28-foot built. Speed--close to 34 miles. \$3450. Completely equipped.

*The riding qualities of these models
 can only be appreciated by actual
 demonstration.*

BUILT BY
HACKER BOAT CO.
 MT. CLEMENS, MICH.

Patronize Our Advertisers

The SEABIRD



A twenty-five mile cruising boat. Smart — Comfortable — Fast — All Mahogany — with forward cockpit and equipped with 150 horsepower motor. A ride in the SEA-BIRD will give you a new conception of the pleasures of cruising. \$8950.00.

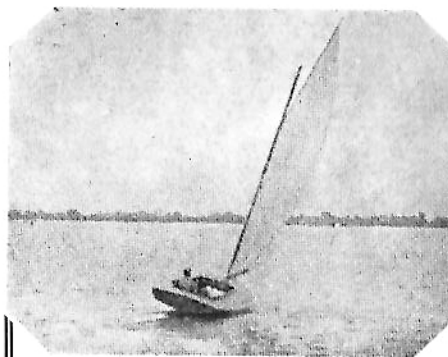


The Richardson CRUISABOUT — where else can you find this value — a complete 26-foot cruiser with 6 cylinder motor for \$2885.00.

Let us arrange a demonstration for either of these models.

HACKER and FERMANN
INCORPORATED
6300 E. Jefferson Avenue
Detroit, Mich.

Patronize Our Advertisers



ESTABLISHED
1840

The Marine
Supply Head-
quarters for
87 years.

MARINE SUPPLIES Yacht Sails and Rigging

Wamsutta Egyptian Duck
Combed Sea Island Duck
Balloon Silk
Linen Yacht Rope
Yacht Manila
Airplane Wire

GEO. B. CARPENTER & CO.

440 North Wells Street
CHICAGO

Every inter-lake
yachtsman needs
our 1927 Marine
Catalog.

Write for your
copy.



Patronize Our Advertisers

Bayview Yacht Club

Long Distance Race

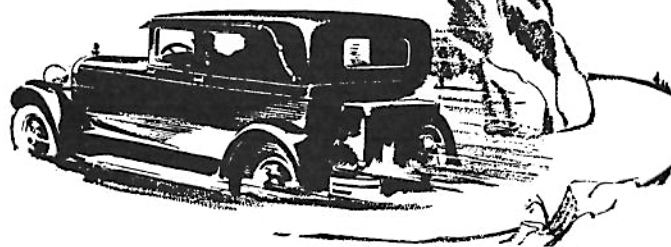
Port Huron
to
Mackinac

July 23rd

ALL yachtsmen with cruising sail boats are requested to participate in this race.

Fill out your entry blank and send to P. C. Williamson, Bayview Yacht Club, Detroit, Chairman of the Race Committee, not later than July 10th, 1927.

Safety



It hugs the curves
as true as a train~

The full expression of the Super-Six principle is *usable and enjoyable* because every detail of the chassis is engineered to provide for the speed, power and stamina of the motor.

HUDSON SUPER-SIX Standard Models

Coach - - - \$1285
Sedan - - - 1385

Custom Built Models

Roadster - - - \$1500
Phaeton - - - 1600
Brougham - - - 1575
5-Pass. Sedan - 1750
7-Pass. Sedan - 1850

All prices f. o. b. Detroit,
plus war excise tax.

HUDSON Super-Six

Aaron DeRoy Motor Car Company

Woodward at Garfield

Telephones Glendale 1300

Parts and Service
481 Canfield Ave., West

East Side Branch
14937 E. Jefferson Ave.

C. W. KOTCHER LUMBER COMPANY

DETROIT, MICH.

OLDEST, LARGEST, BEST

Business Established 1864

Ernest Venn



Here's DECK ENAMEL

—THAT WEARS—
Lionoil Floor and
Deck Enamel

BERRY BROTHERS
Varnishes Enamels Stains

D. O. Stuart & Co.

MARINE INSURANCE

YACHTS—MOTOR BOATS

OCEAN AND INLAND CARGO

404 Ford Bldg.

Cadillac 6997

Patronize Our Advertisers

"BUFFALO"

Marine Motors
Row Boat Motors

"COLUMBIAN"

Bronze Propellers
Reverse Gears

HENRY H. SMITH & CO.

Motor Boat Supplies

Everything for Boats

334 JEFFERSON AVE., EAST

DETROIT

RULES OF THE ROAD

DAY TIME

If one whistle she should blow
To starboard then your bow must go.
And speeding on across the tide
She'll pass to port along your side.
If two whistles she should blow
Why then to port your bow must go.
And if the space is fair and wide
You'll pass along her starboard side.
From three short blasts 'tis yours to learn
That she is going full speed astern.

NIGHT TIME

When both side lights you see ahead,
Port your helm and show your red.
(This refers to cross chain steering only.)
Green to green, or red to red,
Perfect safety, go ahead.
When upon your port is seen
A stranger's starboard light or green,
There's not so much for you to do,
For green to port keeps clear of you.

ALL TIME

When in safety and in doubt,
Always keep a good lookout;
Strive to keep a level head,
Mind your lights and mind your lead.

JULIUS STUETZER

Operating

Art Motor Boat Specialty Works

METAL BOAT FITTINGS

Union Boat Supply Co.

GASOLINE, OILS, GREASES AND BOAT SUPPLIES
DOCK: FOOT OF HOLCOMB AVE.

Boat Supply & Accessory Co.

SHELL GASOLINE AND VALVOLINE OILS
DOCK: FOOT OF MOTOR BOAT LANE

DETROIT

MICHIGAN

Patronize Our Advertisers

ALL CLASSES

One life preserver for each person on board. Life preservers, life belts, buoyant cushions, ring buoys, or similar devices in sufficient number for every person on board, and placed so as to be readily accessible. Life preservers or buoyant cushions must be capable of keeping afloat for twenty-four hours a weight exerting a direct downward pull of 20 pounds, on boats not carrying passengers for hire. No pneumatic life-saving appliances, or appliances filled with granulated cork will be permitted. Planks, gratings, etc., or small boats in tow cannot be substituted for required life-saving appliances. Floats of seasoned wood, not exceeding white pine in weight and measuring at least 4 feet by 14 inches by 2 inches, may be used.

A fire extinguisher capable of extinguishing gasoline fires.

At anchor, a white light only, less than 20 feet above hull, visible around horizon for at least one mile.

Two copies of the Pilot Rules must be carried on board.

MARINE INSURANCE
OF ALL KINDS
YACHT INSURANCE
ESPECIALLY

Phones
Randolph
9277-9254

WM. W. SUMNER
31 W. Atwater St.
Detroit

SHIPS BELLS

	1st Watch	Middle Watch	Morning Watch	Forenoon Watch	Afternoon Watch	1st D'g W't'h 4 to 6 2nd D'g W't'h 6 to 8
1 Bell	8:30 P.M.	12:30 A.M.	4:30 A.M.	8:30 A.M.	12:30 P.M.	4:30 P.M.
2 "	9:00 "	1:00 "	5:00 "	9:00 "	1:00 "	5:00 "
3 "	9:30 "	1:30 "	5:30 "	9:30 "	1:30 "	5:30 "
4 "	10:00 "	2:00 "	6:00 "	10:00 "	2:00 "	6:00 "
5 "	10:30 "	2:30 "	6:30 "	10:30 "	2:30 "	6:30 "
6 "	11:00 "	3:00 "	7:00 "	11:00 "	3:00 "	7:00 "
7 "	11:30 "	3:30 "	7:30 "	11:30 "	3:30 "	7:30 "
8 "	12:00 "	4:00 "	8:00 "	12:00 "	4:00 "	8:00 "

YACHT ROUTINE

**Adopted by the Leading Yacht Clubs
of the United States**

Colors, Etc. In making colors, salutes, etc., the yacht always represents the rank of the owner, whether he is aboard or not.

Yachts in commission should hoist their colors at 8 o'clock a. m., and haul them down at sunset, taking time from the senior officer present.

Before colors in the morning and after colors at sunset, the ensign and distinguishing flags should be shown when entering port, and should be hauled down immediately on coming to anchor.

At all other times yachts should fly a night pennant at the main, from colors at sunset until colors the next morning.

No guns should be fired for colors except by the yacht giving the time, nor from colors at sunset until colors the next morning, nor on Sunday.

Absence flags and meal pennants are not considered colors.

On Decoration Day and occasions of national mourning, the ensign only should be half-masted. On the death of the owner of the yacht both the Club flag and his private signal should be half-masted, but not the ensign. When mourning is ordered for the death of a member of the Club, the Club flag only should be half-masted. This rule should apply to yachts both at anchor and under way.

Flags should always be mastheaded before half-masting them, and should be mastheaded before hauling them down. Saluting with the ensign at half-mast should be done by mastheading first.

SAILMAKERS
and
RIGGERS

CUSHIONS



FLAGS

Patronize Our Advertisers



Four generations—all boat builders have contributed their experience in the designing and building of the largest selling runabout in this country.

CADET

32-35 m. p. h. . . . \$2395

26-FT. CHRIS-CRAFT

30 m. p. h. . . . \$3500

38-40 m. p. h. . . . \$4000

Chris Smith & Sons Boat Co.
ALGONAC MICHIGAN

Officer in Command of Anchorage. The senior officer present should be in command of the anchorage, should give the time for colors, make and return salutes, visits, etc.

His yacht should remain the station vessel until a senior to him in rank arrives and assumes the command of the anchorage.

Pennants, Private Signals, Etc. Flag officers should always fly their pennants while in commission.

Yachts, when the owner is not on board, should fly at the main starboard spreader, during daytime, a blue flag rectangular in shape. This flag should never be flown when under way.

Single-masted vessels should fly the private signal of the owner when entering a home port, or when approaching other yachts at sea; at other times the Club flag, except when with the squadron.

Meal Pennants. A white flag, rectangular in shape, should be flown at the main starboard spreader on schooners, and at the starboard spreader on single-masted vessels during the meal hours of the owner. A red pennant pointed in shape should be flown at the foreport spreader on schooners, and at the port spreaders on single-masted vessels during the meal hours of the crew. A white light should be displayed on starboard spreader after sunset and during the owner's meal hours.

Patronize Our Advertisers

Lights. COMODORE. From colors at sunset until sunrise the Commodore should show, when on board, two blue lights, perpendicularly, at the stern; when absent, one blue light should be shown.

VICE-COMMODORE. The Vice-Commodore should show lights as provided for the Commodore, substituting red lights instead of blue.

CAPTAINS. Captains, when on board, should show a white light under the main boom; when absent this light should be extinguished.

Salutes. All salutes should be returned in kind.

The following rules should not apply to yachts leaving for, or returning from a day's sail.

Yachts should salute vessels of the United States Navy by dipping the ensign once.

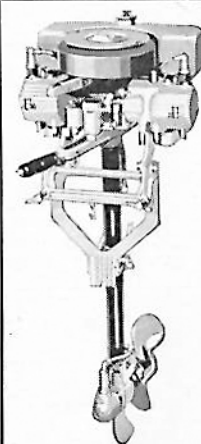
The Commodore, on entering port to join the squadron, should be saluted, on coming to anchor, by the yachts present.

On all other occasions the Commodore should be saluted, on coming to anchor, by the officer in command.

Junior flag officers should be saluted, on coming to anchor, by the officer in command, unless the latter be a senior in rank, in which case they should salute him.

Captains should on all occasions salute the officer in command.

The salute from yachts entering port should be made by dipping the ensign once, or by firing a gun on letting go anchor.



Neutral Starting Position

JUST what you want! With two speeds forward and two speeds reverse—four and one-half Brake H. P. and speed over twenty miles per hour. \$32.00 puts this improved Caille Master on your boat—the rest in easy payments.

Write today for Free Catalog

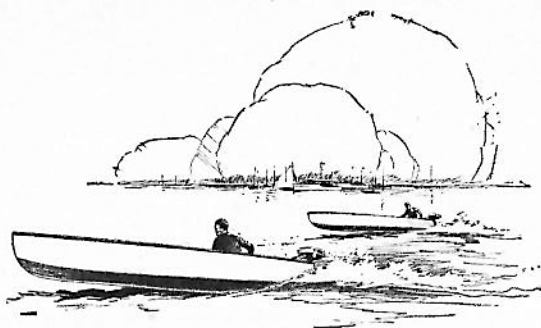
CAILLE MOTOR COMPANY

6260 Second Blvd. Detroit, Mich.



Selective Type Speed Control
0, Neutral; 1-up, Slow Forward;
2-up, Fast Forward; 1-down, Slow
Reverse; 2-down, Fast Reverse.

Patronize Our Advertisers



Outboard Motor Races

are not won with "ordinary" Motors and Boats, nor can a satisfactory outfit be selected from pretty pictures or advertising claims which "sound good" on shore. Don't be an "also ran"—demand facts.

"Run 'em on the Water Before You Buy"

BILL'S BOATS

OUTBOARD MOTORS AND BOATS
The Largest Dealers in the Middle West
Riverfront—West of Alter Road Lenox 3953
DETROIT, MICHIGAN

The senior officer, when leaving the anchorage, excepting temporarily, should indicate the transfer of command to the next in rank by firing a gun on getting under way. All other yachts should salute the officer in command.

All visits should be made according to rank.

Yachts, passing one another, should always exchange salutes by dipping the ensign once, juniors saluting first. Steam whistles should never be used to make salutes.

The salute of yachts entering port, entitled to a salute, should be made by dipping the ensign once, or by firing a gun, when they let go anchor.

An official salute to a foreign club should be made by firing a gun, with the flag of the foreign club at the fore on schooners and steamers, and at the main on single-masted vessels; or, in the absence of such flag, by half-masting the Club flag and firing a gun. When the salute has been returned, or a reasonable time for its return allowed, the flag should be hauled down, and the Club flag hoisted again.

The salute from or to yachts arriving after sunset, or on Sunday, should be made immediately after colors on the following morning.

When a flag officer makes an official visit, a gun should be fired, with his pennant at the fore on schooners and steamers, and at the main on single-masted vessels, while he remains on board.

A yacht, acting as judges' boat, should not be saluted during a race.

The quarter-deck should always be saluted by lifting the cap on coming on board or from below.

Patronize Our Advertisers

With the Squadron. Yachts should report to the commanding officer in joining the squadron, and should obtain his permission before leaving it.

When under way with the squadron, firing guns and signaling should be avoided, except when joining or parting company, or when repeating signals.

PASSING AT SEA. When squadrons of different clubs meet at sea, salutes should be exchanged only by the commanding officers.

Salutes from single yachts at sea should only be answered by the flag-ship.

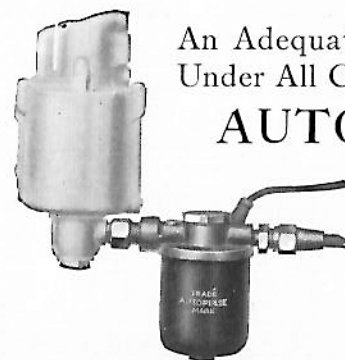
Single-masted vessels should fly the private signal of the owner when under way with the squadron; when at anchor, the Club flag.

When a foreign yacht arrives, the senior officer present should send on board, without regard to rank, a tender of the civilities of the Club.

Entering a Foreign Port. Yachts should salute on entering port in the home waters of a foreign club, where any of its fleet are lying. After the tender of civilities has been made, owners of the entering yachts should visit the officer in command of the anchorage. All other visits should be made according to rank—visits to their equals in rank being made by the owners of the entering yachts.

The time for colors in the home waters of a foreign club should be given with its senior flag officer present.

The term "foreign" should be understood as applying to all other clubs outside of the waters in which a club is stationed.



An Adequate Fuel Supply Under All Conditions—The AUTOPULSE

Surely, after so many successful demonstrations of the IMCO AUTOPULSE by the fastest automobiles and motor boats in the world, there should be no doubt as to its adequateness as an efficient and positive system of fuel supply for the combustion motor under all operating conditions.

Besides, the AUTOPULSE system of Fuel Supply gives to the owner of a motor boat a feeling that he has the most modern method of getting fuel direct from the supply tank to the carburetor—for it functions with human pulse-like regularity—in fact, there is no other system that compares with it.

The AUTOPULSE is a small magnetic device which pumps a continuous flow of fuel from the supply tank direct to the carburetor with human pulse-like regularity.

Our fuel engineering service is at your disposal

IRELAND & MATTHEWS MFG. CO.

Established 1889

1500 Beard Avenue

DETROIT, MICHIGAN

Patronize Our Advertisers



Matthews 38

THE MOST POPULAR
MOTOR CRUISER
IN AMERICA

Write for Detailed Information

THE MATTHEWS COMPANY
PORT CLINTON, O.

Boat Service. The order of entering and leaving boats is, juniors enter first and leave last.

Flag officers and the Fleet-Captain should fly their pennants and Captains their private signals, when in their boats; members, the Club flag. After sunset a white light should be shown at the bow.

Passing one another, juniors should salute seniors by raising the cap.

Every boat approaching a yacht at night should be hailed.

The answer of the Commodore, when intending to board, should be "Commodore;" for Junior flag officers, and fleet-captains, "Flag;" for captains and members, "Ay, ay;" for captains returning on board, the name of their yacht; for visitors, "Visitors;" for sailing-masters, etc., "No, no;" using the port side; for passing boats, "Passing."

FLAGS AND HOW FLOWN

Though there are no hard and fast rules regarding shapes and colors of yachts bunting, the following is generally accepted by the prominent Clubs in the United States and in foreign countries.

Yachts carry the ensign of the country to which they belong. The ensign should be flown as follows:—

AT MAIN PEAK by Cat-rigged Yachts, Sloop-rigged Yachts and Cutter-rigged Yachts.

AT MAIN MASTHEAD by Schooner Yachts.

AT STERN FLAGSTAFF by Launches, Gigs and Dinghys.

AT TAFFRAIL FLAGSTAFF by Steam Yachts.

AT MIZZEN PEAK, or JIGGER MASTHEAD by Yawl-rigged Yachts.

Patronize Our Advertisers

All Yachts at anchor display the ensign at taffrail flagstaff.

The CLUB BURGEE, which indicates to which club the owner of the Yacht belongs, is flown as follows:—

At MASTHEAD by Cat-rigged Yachts, Sloop-rigged Yachts and Cutter-rigged Yachts.

At MAIN MASTHEAD by Yawl-rigged Yachts.

At FORE MASTHEAD by Steam Yachts and Schooner-rigged Yachts.

At BOWSTAFF by Launches, Gigs and Dinghys.

The Private Signal, which designates the owner of the Yacht, is flown as follows:

AT MASTHEAD or on FORESTAY by Cat-rigged Yachts.

At MIZZEN MASTHEAD or MIZZEN PEAK by Yawl-rigged Yachts.

At MASTHEAD (when cruising in Squadron) by Sloop-rigged Yachts and Cutter-rigged Yachts.

At MAIN MASTHEAD by Steam Yachts and Schooner-rigged Yachts.

At BOWSTAFF by Launches, Gigs and Dinghys.

FLAG OFFICER'S SIGNALS are mostly colored:—Blue for Commodore, Red for Vice-Commodore, and White for Rear-Commodore.

The following flags are not considered as colors:—

NIGHT PENNANT (blue) is hoisted at the main truck from sun-down to 8:00 a. m., also occasionally used as a tell-tale when racing or sailing.

OWNERS' ABSENT FLAG (blue rectangular) is flown from the main starboard spreader when yacht is at anchor only. It denotes owner is not on board, but should never be flown when under way.

✓ Drive In—

Free Inspection and Adjustment

Gabriel Snubbers
NO CHARGE !!!!

Once each year—or every 10,000 miles

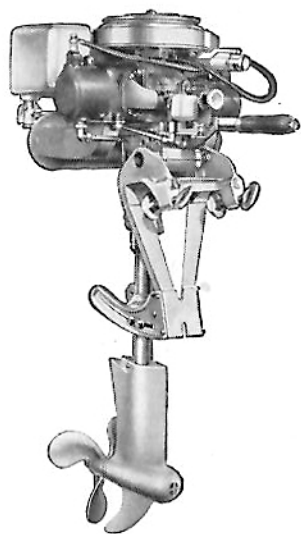
Gabriel Snubbers
Should be thoroughly overhauled at
our Service Station

5936 John R Street
G. H. BROWN CO.

Empire 1309

Empire 1310

Patronize Our Advertisers



3 Remarkable EVINRUDES

A Motor for Every Boat and Buyer

Speeds—from 27 m. p. h. to slow trolling pace. Power—from full 8 h. p. to 2 h. p.

Whatever your requirements may be and whatever type boat you own or intend to own, there's an Evinrude Motor to exactly meet your requirements.

3 Remarkable Services

Evinrude Free Trial Guarantee, Evinrude Boat Speed Guide [Reg. U. S. Pat. Off.], Evinrude Standardized Time Payment Plan—make the Evinrude easier to purchase. Only \$30 down puts any Evinrude on your boat.

Ask for complete facts today. See the Evinrude "Store-Lake" demonstration. No obligation.

EVINRUDE MOTOR COMPANY

Factory Branch

434 Shelby St.

Detroit, Mich.

OWNER'S MEAL FLAG (white rectangular) is flown from the main starboard spreader and denotes the owner is at meals. Boarding a yacht when this flag is flying is considered bad form.

Meal pennants should not be flown when under way.

CREW MEAL FLAG (red triangular) is flown from the foreport spreader on schooners and main-port spreader on single-masted yachts. This denotes the crew is at meals.

CHURCH PENNANT (white triangular, with blue cross) is the only flag ever displayed above the ensign, and only during divine service, with Yacht at anchor.

WATER FLAG (white rectangular, with word "water" in center, in black letters) is the signal for water boat. May be displayed from any part of the yacht.

The official day on board of a yacht begins with colors (8 a. m.) and ends with the boom of senior officer's gun, at sunset, when the night pennant should be hoisted.

In making "colors," salutes, etc., the yacht should always represent the rank of the owner, whether he is on board or not.

In entering or leaving port before "colors" in the morning, or after "colors" at sunset, the ensign and distinguishing flags should be shown, and then hauled down on coming to anchor.

On Decoration Day and occasion of National Mourning, only the ensign should be half-masted. In case of death of the owner of the yacht, the Club flag and his private signal should be half-masted, but not the ensign.

When mourning is ordered for death of a club member, only the Club flag should be half-masted.

Patronize Our Advertisers

Flags should be mastheaded, both before half-masting them and before hauling them down. Saluting with the ensign should be done by mastheading it first.

Flag officers should always fly their pennants while in commission.

Single-masted vessels should fly the private signal of the owner when under way, and when at anchor the Club flag.

When Squadrons of different Clubs meet at sea, salutes should be exchanged by the commanding officers only.

Salutes from single Yachts at sea should be answered by the Flag Ship only.

Yachts should always salute vessels of the United States Navy by dipping the ensign once.

Yachts passing one another should always exchange salutes by dipping the ensign once only, juniors saluting first. A yacht acting as judge's boat should not be saluted during a race.

A yacht, on withdrawing from any race, should at once lower its racing colors, and allow yachts still competing right of way.

A yellow and black flag borne quarterly will signify that the vessel has contagious disease on board and is to be avoided.

The International Code of Signals enables yachts to communicate with each other.

Flag "B," of the International Code of Signals, is used for a **PROTEST FLAG**, and is conspicuously displayed in the rigging of a yacht protesting during a race.

A single pennant representing the letter "S" is the signal of distress.

In **DRESSING SHIP** the International Code may be used to advantage. Care being taken to have burgees, pennants and rectangular flags bent on alternately. Hoist at the peak of staff aft the Yacht ensign, and on the Jack staff hoist the Jack. Also arrange a rainbow of flags, reaching from the water line forward to the water line aft, by way of the jib boom end to foretop masthead, then across to main topmast, and down to main boom end, allowing several flags to touch the water line from both the jib boom end and the main boom end. To keep flags in position, a weight should be attached to the end of each line. Additional strings of flags may be used for display from each top masthead to the deck.

COMPLIMENTS OF

Sand Lime Products Co.

Manufacturers of

WHITE SAND LIME BRICK

Foot of St. Jean Avenue

Lenox 5127

Detroit, Mich.

Patronize Our Advertisers

The Gorenflo Co.

Wholesale Jewelers

153 E. JEFFERSON AVENUE

DETROIT, MICHIGAN



RANDOLPH 2542-2543

Fronty Marine Engines

Racing and Stock

151 Class Champion

60 Horse Power 310 Pounds Weight

FRONTY SALES CO.

3558 GRATIOT AVENUE

DETROIT

COMPLIMENTS
OF

WAYMAN & WARD, Inc.

Eastern Michigan Distributors
of

JOHNSON MOTORS
SERVICE STATION AND PARTS
STANNUS SPEED WHEELS

59 Selden Avenue

Detroit, Mich.

Patronize Our Advertisers

TABLE OF BOAT SPEED PER MILES PER HOUR—Formula .000947 constant x pitch x revolutions

R.P. M.	Per Cent of Slip	PITCH OF PROPELLER IN INCHES												SPEED LIMIT						
		14"	16"	18"	20"	22"	24"	26"	28"	30"	33"	36"	40"	45"	50"	55"	60"	Miles Per Hour	Min. Per Mile	Feet Per Second
400	None	5.30	6.06	6.82	7.58	8.33	9.08	9.85	10.61	11.36	12.50	13.63	15.15	16.05	18.94	20.83	22.72	8	7.30	11
	10%	4.77	5.45	6.14	6.82	7.50	8.18	8.87	9.55	10.22	11.25	12.27	13.63	15.34	17.05	18.75	20.44	10	6.5	14
	20%	4.24	4.85	5.45	6.06	6.66	7.27	7.88	8.49	9.09	10.00	10.90	12.12	13.65	15.15	16.67	18.18	12	5.8	17
600	None	7.96	9.03	10.23	11.36	12.50	13.63	14.77	15.91	17.05	18.75	20.46	22.73	25.57	28.41	31.20	34.08	14	4.14	23
	10%	7.16	8.18	9.30	10.22	11.25	12.27	13.30	14.32	15.34	16.82	18.31	19.46	21.46	23.01	25.57	28.08	16	3.45	26
	20%	6.37	7.17	8.18	9.09	10.01	11.02	11.82	12.75	13.64	15.01	16.37	17.18	18.18	20.06	21.73	23.96	18	3.20	29
800	None	10.61	12.12	13.64	15.15	16.67	18.18	19.70	21.21	22.73	25.00	27.32	30.30	33.09	37.88	41.66	45.24	22	2.43	35
	10%	9.55	10.91	12.37	13.83	15.00	16.36	17.73	19.07	20.46	22.79	24.54	27.27	30.68	34.00	38.50	42.72	24	2.18	38
	20%	8.49	9.70	10.91	12.12	13.34	14.54	15.76	16.97	18.18	20.01	21.82	24.34	27.27	30.30	33.33	36.79	26	2.08	41
1000	None	13.26	15.13	17.05	18.94	20.83	22.73	24.62	26.52	28.41	31.50	34.08	37.88	42.86	47.35	52.08	56.82	30	1.75	50
	10%	11.93	13.43	15.04	16.65	18.25	19.86	21.46	23.07	24.68	27.82	30.08	34.09	38.36	42.36	46.83	51.08	35	1.5	58
	20%	10.61	12.12	13.73	15.34	16.95	18.56	20.16	21.77	23.38	25.01	27.27	30.30	34.09	38.36	42.36	46.83	40	1.33	72
1500	None	9.28	10.41	11.73	13.16	14.58	15.91	17.32	18.75	20.18	22.00	23.82	26.35	28.88	32.48	36.07	39.67	45	1.09	88
	10%	8.29	9.28	10.41	11.63	12.85	14.07	15.29	16.51	17.73	19.50	21.27	23.82	26.35	30.00	33.65	37.30	50	1.00	79
	20%	7.18	7.89	8.92	9.95	10.98	12.01	13.04	14.07	15.10	16.60	18.10	20.10	22.10	25.00	27.90	30.80	55	1.00	88
2000	None	13.92	15.92	17.91	19.90	21.89	23.88	25.86	27.86	30.81	34.81	38.81	42.81	46.81	50.81	54.81	58.81	60	1.00	88
	10%	12.51	14.51	16.51	18.51	20.51	22.51	24.51	26.51	28.51	31.51	34.51	37.51	40.51	43.51	46.51	49.51	60	1.00	88
	20%	11.10	12.60	14.10	15.60	17.10	18.60	20.10	21.60	23.10	25.10	27.10	29.10	31.10	33.10	35.10	37.10	60	1.00	88
2500	None	26.51	30.30	34.09	37.88	41.67	45.45	49.24	53.03	56.82	62.50	68.18	73.86	79.54	85.22	90.90	96.58	70	1.00	88
	10%	23.86	27.27	30.69	34.09	37.50	40.91	44.32	47.73	51.14	56.25	61.37	66.49	71.61	76.73	81.85	86.97	70	1.00	88
	20%	21.26	24.24	27.22	30.20	33.17	36.15	39.12	42.10	45.08	49.75	54.42	59.09	63.76	68.43	73.10	77.77	70	1.00	88
2500	None	18.56	21.21	23.89	26.51	29.17	31.83	34.50	37.15	39.78	43.75	47.75	51.75	55.75	59.75	63.75	67.75	70	1.00	88
	10%	16.56	18.86	21.16	23.46	25.76	28.06	30.36	32.66	34.96	38.26	41.56	44.86	48.16	51.46	54.76	58.06	70	1.00	88
	20%	14.56	16.56	18.56	20.56	22.56	24.56	26.56	28.56	30.56	33.56	36.56	39.56	42.56	45.56	48.56	51.56	70	1.00	88
2500	None	33.14	37.88	42.61	47.35	52.08	56.82	61.55	66.29	71.02	78.12	85.23	92.34	99.45	106.55	113.65	120.75	70	1.00	88
	10%	29.83	34.10	38.35	42.62	46.88	51.14	55.40	59.67	63.92	70.31	76.71	83.12	89.52	95.88	102.24	108.60	70	1.00	88
	20%	26.52	30.30	34.09	37.89	41.68	45.46	49.25	53.03	56.82	62.50	68.19	73.88	79.57	85.25	90.94	96.63	70	1.00	88
2500	None	23.21	26.54	29.83	33.16	36.48	39.78	43.10	46.43	49.72	53.03	56.32	59.61	62.90	66.19	69.48	72.77	70	1.00	88
	10%	21.21	24.09	26.97	29.85	32.73	35.61	38.49	41.37	44.25	47.13	50.01	52.89	55.77	58.65	61.53	64.41	70	1.00	88
	20%	19.21	21.59	23.97	26.35	28.73	31.11	33.49	35.87	38.25	40.63	43.01	45.39	47.77	50.15	52.53	54.91	70	1.00	88

A Michigan Propeller Wheel of any diameter with 30 inches pitch at 800 R. P. M., allowing 10% slip, will make 20.46 miles per hour. See Table.
NOTE:—If you want to know the speed at 1200 revolutions, double the 600 column. 500 Revolutions would be one-half the 1000 revolution column.
You can reduce pitch to one-half of figures given and table results at twice the R. P. M. will be correct.
Courtesy Michigan Wheel Co., Grand Rapids, Michigan

TABLE OF EQUIVALENTS OF NAUTICAL AND STATUTE MILES

The Admiralty Knot—6,080 Feet.

1 Statute Mile—5,380 Feet.

Knots	Miles	Knots	Miles	Knots	Miles	Knots	Miles	Knots	Miles
1.00	1.152	5.75	6.621	10.50	12.091	15.25	17.561	20.00	23.030
1.25	1.439	6.00	6.909	10.75	12.379	15.50	17.848	20.25	23.318
1.50	1.727	6.25	7.197	11.00	12.667	15.75	18.136	20.50	23.606
1.75	2.015	6.50	7.485	11.25	12.955	16.00	18.424	20.75	23.894
2.00	2.303	6.75	7.773	11.50	13.242	16.25	18.712	21.00	24.182
<hr/>									
2.25	2.591	7.00	8.061	11.75	13.530	16.50	19.000	21.25	24.470
2.50	2.879	7.25	8.349	12.00	13.818	16.75	19.288	21.50	24.758
2.75	3.167	7.50	8.636	12.25	14.106	17.00	19.576	21.75	25.045
3.00	3.455	7.75	8.924	12.50	14.394	17.25	19.864	22.00	25.331
3.25	3.742	8.00	9.212	12.75	14.682	17.50	20.152	22.25	25.562
<hr/>									
3.50	4.030	8.25	9.500	13.00	14.970	17.75	20.439	22.50	25.909
3.75	4.318	8.50	9.788	13.25	15.258	18.00	20.727	22.75	26.197
4.00	4.606	8.75	10.076	13.50	15.545	18.25	20.015	23.00	26.485
4.25	4.894	9.00	10.364	13.75	15.833	18.50	21.303	23.50	27.061
4.50	5.182	9.25	10.652	14.00	16.121	18.75	21.591	24.00	27.636
<hr/>									
4.75	5.470	9.50	10.939	14.25	16.409	19.00	21.879	24.50	28.212
5.00	5.758	9.75	11.227	14.50	16.697	19.25	22.167	25.00	28.788
5.25	6.045	10.00	11.515	14.75	16.985	19.50	22.455		
5.50	6.333	10.25	11.803	15.00	17.273	19.75	22.742		

WE APPRECIATE YOUR HELP

Commodore Wilson and his staff herewith tender their deep appreciation to the advertisers represented in these pages for their spirit of co-operation in making this year's I.-L. Y. A. Program possible. Without the expectation of a return they have cheerfully and willingly aided the work of the Committee and have, by so doing, advanced the fine spirit of sportsmanship among yachtsmen to an even higher standard.

MARDI GRAS NIGHT

Wednesday Evening

July 13th, 1927



A Glorious Pageant



The Commodore requests all
ships in the harbor decorate
for this occasion with
their colors and color-
ed lights. Also use
your searchlight.



DRESS SHIP