

T H E

I N T E R L A K E

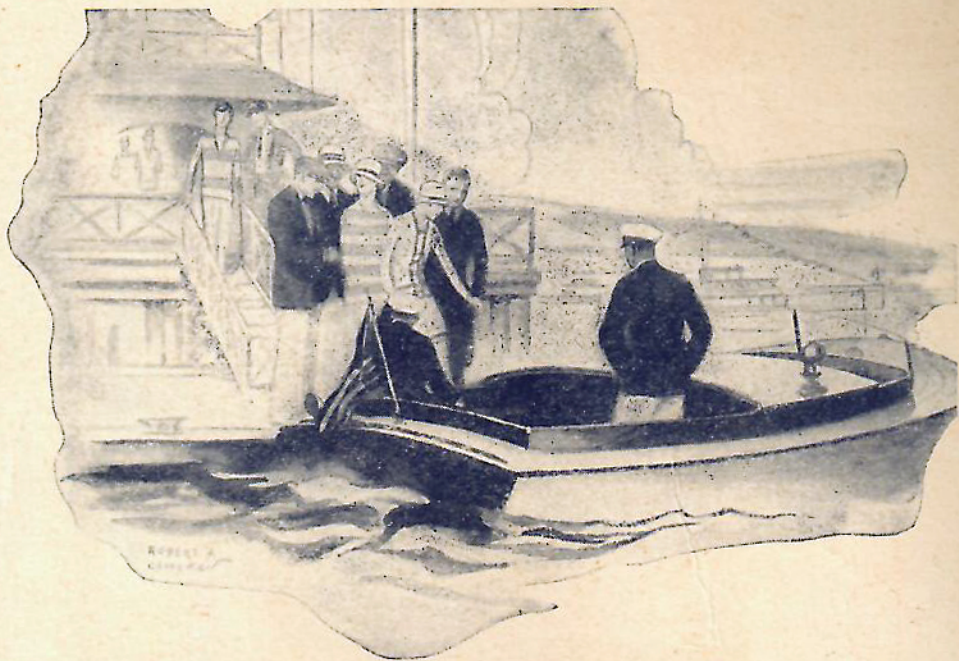


PROPERTY OF  
WLEHS  
No. \_\_\_\_\_

OFFICIAL  
PROGRAM  
OF THE 1928  
**I.L.Y.A.**  
PUT-IN-BAY  
July 8-15

LEWIS





# Always dependable

Millions of times a day—year after year—Auto-Lite is called upon to prove its mettle and its dependability. Each test, whether in motor boats, motor cars or motor trucks, further establishes Auto-Lite in the hearts of Owners as the standard in starting, lighting and ignition systems.

Owner satisfaction and quick, faithful response are the dominant reasons for Auto-Lite's leadership—and the reasons so many motor boat designers specify Auto-Lite. . . THE ELECTRIC AUTO-LITE COMPANY. . . OFFICE AND WORKS: TOLEDO, OHIO.

*Also Makers of DéJon*

# Auto-Lite

Starting, Lighting & Ignition

|                  |                    |
|------------------|--------------------|
| FILE NO.         | PHOTO DATE         |
| TITLE            | HELEN BROOKS       |
| PLACE COLLECTION | WELLS - COLLECTION |



Established 1898



# BELL & BECKWITH

*514 Madison Ave.*

Toledo Ohio.

*Phone Main 3201*



# Nearly Every Industry Uses It

**F**OR ELECTRICAL insulation, for gears or other mechanical applications, for plating barrels and other chemical-resisting parts—nearly every industry finds profitable use for Formica.

It has a combination of industrially valuable characteristics that are not available in any other material. Formica has the largest equipment in the business—centrally located to give the best and promptest service to the manufacturers of the middle West.

The FORMICA INSULATION Co.  
CINCINNATI, OHIO

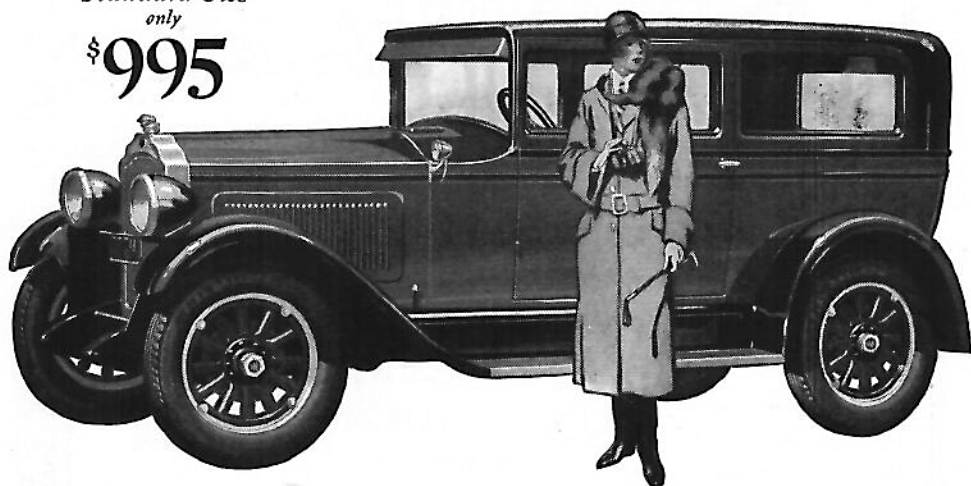
# FORMICA

J. L. GRUBER, *District Manager*  
419 Ohio Bldg., Toledo, O.



New  
Standard Six  
only

\$995



## LOWEST PRICES IN HISTORY

Never has the fine car field offered such a sterling value as the new Standard Six. For the first time in history, a Willys-Knight Six is actually priced below \$1000!

Nor is this record low price by any means the only factor to be considered. The Standard Six maintains all the quality supremacy of costlier Willys-Knights. Its *patented* high compression double-sleeve-valve engine, with 7-bearing crankshaft, is notable for the same velvet smoothness, silent power and rugged stamina which have won the praise of hundreds of thousands of enthusiastic Willys-Knight owners. By all means, be sure to see this beautiful car. You will admire its low, graceful lines, its richness of color, its spacious and tastefully appointed interior.

Willys-Knight Sixes from \$995 to \$2695. Prices f. o. b. Toledo, Ohio, and specifications subject to change without notice. Willys-Overland, Inc., Toledo, Ohio. Willys-Overland Sales Co., Ltd., Toronto, Canada.



# WILLYS-KNIGHT SIX



# DELAWARE

## *Hard Fibre*

THE integrity of an organization is measured by its devotion to an ideal.

We have devoted thirty-eight years solely to the manufacture of fibre, controlling the process from cotton to finished product in one plant.



DELAWARE  
HARD FIBRE COMPANY

*Wilmington,*  
*Delaware*

MANUFACTURER EXCLUSIVELY  
OF FIBRE

J. L. GRUBER, *Representative*  
419 Ohio Bldg., Toledo, O.

# PROGRAM

*of the*

## Inter-Lake Yachting Association



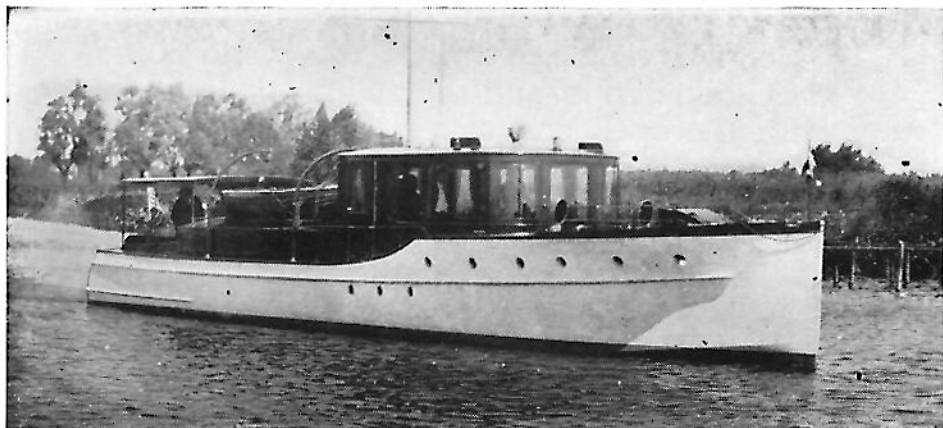
ORGANIZED JAN. 17, 1885  
REORGANIZED MAR. 19, 1894

MEMBER OF  
Yachting Racing Union of the Great Lakes  
North American Yacht Racing Union  
Star Class Yacht Racing Association  
American Power Boat Association  
Amateur Athletic Union  
Central Association





**E. H. REED**  
*Commodore*  
I. L. Y. A. 1928



**PRISCILLA**  
I. L. Y. A. Flagship 1928

The *Priscilla* is the flagship of Commodore E. H. Reed of the Inter-Lake Yachting Association for the 1928 Regatta.

Commodore Reed will hold open house on the Flagship *Priscilla* Monday, July 9th from 2:00 P. M. to 4:00 P. M. All registered yachtsmen are invited to attend.

The *Priscilla* is the 1928 Inter-Lake Flagship thru the courtesy of Commodore T. A. DeVilbiss of the Toledo Yacht Club.



# The DART → RUNABOUT

THE Sport trend is toward the water and riding the crest of this ever-increasing wave of enthusiasm is the *Dart Runabout*, which is available in 22 ½ ft., 26 ft. and 30 ft. sizes. The 26 ft. and the 30 ft. are built in both the open and closed type. Each boat produced is given sufficient individual attention to produce a masterpiece, with the result that every *Dart Boat* exemplifies quality throughout. Write for complete details.

INDIAN LAKE BOAT COMPANY, INC.  
352 East High Street, Lima, Ohio

## **SUPERIOR CARBON PRODUCTS INCORPORATED**

MANUFACTURERS OF  
Brushes for Starting  
Lighting and Marine  
Equipment

**POUGHKEEPSIE, N. Y.**

*I. L. Y. A. Flag Officers*  
1928



**JAMES H. REED**  
*Vice-Commodore*  
I. L. Y. A.  
1928  
Commodore Cleveland  
Yachting Club



**H. M. HILL**  
*Rear-Commodore*  
I. L. Y. A.  
1928  
Buffalo Canoe Club



# VUL-COT



## *—the sea-going waste basket*

Take the orderliness of your boat into your home and offices!

Vul-Cot wastebaskets keep every desk and every room in the house all ship-shape and Bristol fashion. Dust and ashes can't spill to leeward out of their solid sides and bottoms. Tight a craft as ever you saw, and just as smart, in their fresh coats of colorful lacquer. Big ones for the office and little ones (round or oval) for the home. At stationery, department and housefurnishing stores.

MADE BY THE MAKERS OF NATIONAL  
VULCANIZED FIBRE AND PHENOLITE  
LAMINATED BAKELITE

**NATIONAL VULCANIZED FIBRE CO.,**

**Wilmington, Del., U. S. A.**

# Inter-Lake Yachting Association

## CLUBS ENROLLED

|   |   |
|---|---|
| Bay City Boat Club                                | International Yacht and Country Club        |
| Bayview Yacht Club of Detroit                     | Lake Shore Country Club                     |
| Bay View Yacht Club of Toledo                     | Lorain Yacht Club                           |
| Buckeye Lake Yacht Club, Columbus                 | Maumee River Yacht Club, Toledo             |
| Buffalo Canoe Club                                | Miss Detroit Power Boat Ass'n, De-<br>troit |
| Buffalo Launch Club                               | Mohawk Boat Club, Mt. Clemens,<br>Mich.     |
| Buffalo Yacht Club                                | Monroe Yacht Club                           |
| Cleveland Metropolitan Yachting Assn.             | Ohio Outboard Association                   |
| Cleveland Yachting Club                           | Ottawa River Yacht Club, Toledo             |
| Corinthian Yacht Club, Rocky River,<br>Ohio       | Port Clinton Yacht Club                     |
| Corinthian Yacht Club, Detroit, Mich.             | Port Huron Yacht Club                       |
| Country Club of Detroit                           | Put-In-Bay Yacht Club                       |
| Detroit Boat Club Yachtsmen                       | Riverside Boat Club, Toledo                 |
| Detroit Yacht Club                                | Sandusky Yacht Club                         |
| Edison Boat Club, Detroit                         | Toledo Yacht Club                           |
| Edgewater Yacht Club of Cleveland                 | Vermilion Boat Club                         |
| Erie Yacht Club                                   | Walkerville Boat Club                       |
| Grosse Pointe Yacht Club, Grosse<br>Pointe, Mich. |   |

## PAST COMMODORES

|                                  |      |
|----------------------------------|------|
| *Geo. W. Gardner, C. Y. C.       | 1894 |
| *John E. Gunckel, T. Y. C.       | 1895 |
| *Geo. H. Worthington, C. Y. C.   | 1896 |
| *S. O. Richardson, Jr., T. Y. C. | 1897 |
| *Alex. I. McLeod, D. Y. C.       | 1898 |
| *Geo. T. Bliss, E. Y. C.         | 1899 |
| Geo. F. Anderson, S. Y. C.       | 1900 |
| *Wm. R. Huntington, S. Y. C.     | 1901 |
| *C. C. Warren, S. Y. C.          | 1902 |
| *Henry Tracy, T. Y. C.           | 1903 |
| John H. Smedley, D. B. C. Y.     | 1904 |
| *Geo. H. Worthington, C. Y. C.   | 1905 |
| John F. Craig, T. Y. C.          | 1906 |
| *Frank W. Fletcher, T. B. Y. A.  | 1907 |
| *Geo. H. Worthington, C. Y. C.   | 1908 |
| *S. O. Richardson, Jr., T. Y. C. | 1909 |
| C. G. Jennings, C. C. of D.      | 1910 |
| *Alexander Winton, L. Y. C.      | 1911 |
| *Wm. R. Huntington, S. Y. C.     | 1912 |
| *Geo. H. Worthington, C. Y. C.   | 1913 |
| Henry W. Hess, T. Y. C.          | 1914 |
| Harry C. Kendall, D. Y. C.       | 1915 |
| Emil G. Schmidt, S. Y. C.        | 1916 |
| *Alexander Winton, C. Y. C.      | 1917 |
| *Wm. R. Huntington, S. Y. C.     | 1918 |
| R. George Marsh, G. P. Y. C.     | 1919 |
| F. W. Wakefield, V. B. C.        | 1920 |
| *F. W. Roberts, C. Y. C.         | 1921 |
| C. W. Kotcher, D. Y. C.          | 1922 |
| Sidney Frohman, S. Y. C.         | 1923 |
| Otto F. Barthel, D. Y. C.        | 1924 |
| *Thos. A. DeVilbiss, T. Y. C.    | 1925 |
| A. A. Schantz, D. Y. C.          | 1926 |
| Dr. W. A. Wilson, B. Y. C.       | 1927 |

\*Deceased.

18



# LaSalle Steel Company

*Manufacturers of*

Cold Finished Bar Steel  
Cold Drawn Steel  
Shafting Screw Stock

*All Standard Sizes, Shapes and Grades  
Ample Capacity  
Dependable Quality  
Prompt Shipments*

---

Plant  
HAMMOND, INDIANA  
*Chicago Base District*

Office  
CHICAGO, ILLINOIS

OFFICERS 1928

OFFICERS

*Commodore* - - - - - E. H. Reed, T. Y. C.  
*Vice-Commodore* - - - - - J. H. Reed, C. Y. C.  
*Rear-Commodore* - - - - - H. M. Hill, B. C. C.  
*Secretary-Treasurer* - - - - - R. A. Luedtke, T. Y. C.  
*Librarian* - - - - - Frank R. Frey, T. Y. C.  
*Fleet Surgeon* - - - - - Dr. W. D. Ford, D. Y. C.  
*Sail Yacht Measurer* - - - - - Adolph Seidel, T. Y. C.  
*Power Boat Measurer* - - - - - George Bender, T. Y. C.

YACHTSMEN'S FUND TRUSTEES

Organized 1916

*President* - - - - - F. W. Roberts, C. Y. C.  
*Vice-President* - - - - - F. W. Wakefield, V. B. C.  
*Secretary-Treasurer* - - - - - Chas. D. Lynch, D. Y. C.

1018 Lafayette Bldg., Detroit, Mich.

Harry Austin, D. B. C. Y.                      Henry Hess, T. Y. C.  
 Wm. J. Billingslea, M. R. Y. C.              O. F. Barthel, D. Y. C.  
 Sidney Frohman, S. Y. C.                      E. H. Reed, T. Y. C.

DELEGATES

AMERICAN POWER BOAT ASSOCIATION

Alex I. McLeod, D. Y. C.                      John G. Robinson, C. Y. C.  
    Earl Shanteau, O. R. Y. C.

AMATEUR ATHLETIC UNION

Harry Austin, D. B. C. Y.

YACHT RACING UNION OF THE GREAT LAKES

Dr. C. G. Jennings, C. C. D.                      Otto F. Barthel, D. Y. C.  
 R. A. Luedtke, T. Y. C.                              W. A. Wilson, B. Y. C.

NORTH AMERICAN YACHT RACING UNION

Otto F. Barthel, D. Y. C.                      R. A. Luedtke, Alternate, T. Y. C.

GILLET LIGHTING STUDIO  
 INCORPORATED

*"Lighting Fixtures of Quality"*

1214 Madison Avenue  
 TOLEDO, OHIO





## A De Vilbiss Perfumizer For Every Perfume

Following the present vogue of more than one perfume (and 'tis the modern mode to choose several) you will find unrivaled gift suggestions in the variety of Perfume Sprays that De Vilbiss offers this season.

There is a Perfumizer for every Perfume—tiny bowls on slender stems for rare odours; more generous containers for Toilet Waters.

The colors and decorations are gorgeous.

Ask to see them at any Toilet Goods Counter.

**The De Vilbiss Company**  
Toledo, Ohio

## INTER-LAKE COMMITTEES

### SAIL YACHT JUDGES COMMITTEE

Com. W. A. Wilson, B. V. Y. C., *Chairman*  
 Com. F. W. Wakefield, V. B. C.  
 Henry D. Moran, G. P. Y. C.  
 Com. O. F. Barthel, D. Y. C.  
 Theo. Pickering, B. C. C.  
 Com. Harry Larkin, B. Y. C.  
 Com. Melvin Crawford, L. S. C. C.  
 Robt. Gates, Mohawk B. C.

### SAIL YACHT RULES COMMITTEE

P. C. Williamson, B. V. Y. C., *Chairman*  
 Adolph Seidel, T. Y. C.  
 Albert C. Hamilton, D. Y. C.  
 Dr. C. G. Jennings, D. C. C.  
 O. F. Barthel, D. Y. C.  
 R. A. Luedtke, T. Y. C.  
 Dr. W. A. Wilson, B. V. Y. C.

### SAIL YACHT REGATTA COMMITTEE

Theo. Schmitt, T. Y. C., *Chairman*  
 Harold Hall, E. B. C.  
 Adolph Seidel, T. Y. C.  
 Arthur Davis, T. Y. C.  
 C. B. Cornell, B. L. Y. C.  
 W. C. Warren, Jr., B. C. C.  
 Walter Heusseler, B. C. C.  
 R. P. Francis, C. Y. C.  
 Henry Egner, T. Y. C.  
 O. J. Mulford, M. B. C.  
 John G. Painter, D. Y. C.  
 John P. Ellsler, C. Y. C.  
 John Schell, D. Y. C.

### POWER BOAT JUDGES COMMITTEE

Com. E. E. Noble, C. Y. C., *Chairman*  
 N. J. Shea, C. Y. C., *Vice Chairman*  
 J. A. Tallman, T. Y. C.  
 Hugh Gunnison, D. Y. C.  
 C. B. Solders, E. Y. C.  
 Henry Hess, T. Y. C.  
 S. B. Egan, B. L. C.  
 Com. J. W. Langdon, C. Y. C.  
 R. B. Pettitt, C. Y. C.  
 Ray Emerick, M. B. C.  
 Joe Murphy, E. Y. C.

# FURS

A. F. SCHWALBE

*Furrier & Designer*

432 Superior Street  
 TOLEDO, O.





*A*  
**KERMATH**  
*always runs*

Built in Fifteen Sizes  
3 H. P. to . . \$135 to  
150 H. P. . . . \$2300

**KERMATH**

**KERMATH MFG. COMPANY**  
DETROIT, MICHIGAN



## POWER BOAT RULES COMMITTEE

W. V. Gorton, T. Y. C., *Chairman*  
 Earl Shanteau, O. R. Y. C.  
 Jno. G. Robinson, C. Y. C.  
 W. D. Edenburn, D. Y. C.  
 Ellis Bunn, M. R. Y. C.  
 Geo. Bender, T. Y. C.

## POWER BOAT REGATTA COMMITTEE

W. V. Gorton, T. Y. C., *Chairman*  
 Geo. Bender, T. Y. C.  
 Chas. Thornburgh, S. Y. C.  
 L. J. Beckert, O. R. Y. C.  
 F. J. Killeen, B. L. C.  
 E. T. Affleck, T. Y. C.  
 Herbert Irish, M. B. C.  
 W. H. Cooper, B. Y. C.  
 W. F. Meier, C. Y. C.

## OUT BOARD MOTOR RACE COMMITTEE

Dann Taber, O. O. A., *Chairman*  
 Earl Boyer, T. Y. C.  
 Ellis Bunn, M. R. Y. C.  
 Earl Shanteau, O. R. Y. C.  
 Bill Doak, Detroit Outboard Association  
 Dr. Hackett, D. Y. C.  
 Harry Gardiner, Detroit Outboard Association  
 John G. Robinson, C. Y. C.  
 Joe S. Murphy, C. Y. C.  
 Dave K. Wick, O. O. A.  
 W. E. Lyman, O. O. A.  
 Henry G. Fink, B. L. Y. C.  
 R. M. Edwards, O. O. A.  
 C. H. Maranville, O. O. A.

## MODEL YACHT COMMITTEE

Geo. Steinbrecker, D. M. Y. C., *Chairman*  
 Paul Bowers, T. Y. C.  
 Dell Heinle, T. Y. C.

## OTHER SPORTS COMMITTEE

Chas. D. Lynch, D. Y. C., *Chairman*  
 Jno. P. McInnis, T. Y. C.  
 Geo. Pierce, B. L. Y. C.  
 Tom Van Sickle, D. Y. C.  
 Harry Austin, D. Y. C.  
 L. C. Monroe, T. Y. C.  
 William K. McCool, T. Y. C.  
 Harold Jones, T. Y. C.  
 C. Morgan, Jr., T. Y. C.  
 G. A. Tompkins, D. Y. C.  
 Chas. H. Bremman, D. B. C.  
 Glenn Martin, V. B. C.

## PUBLICITY COMMITTEE

Frank Skeldon, T. Y. C., *Chairman*  
 Paul Shrader, T. Y. C.  
 Earl Aiken, T. Y. C.  
 W. E. Edenburn, D. Y. C.  
 Ed. F. Bang, C. Y. C.  
 Jno. G. Robinson, C. Y. C.  
 Philip Schaeffer, B. L. C.

# DOEHLER DIE CASTING COMPANY

*World's Largest  
Producers of  
Die Castings*

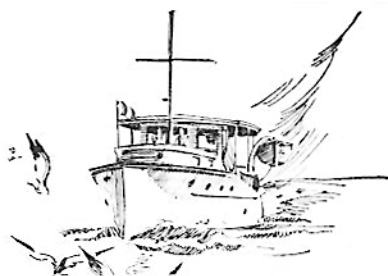
NEW YORK, N. Y.

*We Welcome  
All Yachtsmen*

## SMITH COTTAGE



Our Dining Room Is Open Early  
and Late



*For Motor  
Boating*

If you own a motor boat  
—whether it be a handy  
out-board driven craft or  
a large cabin cruiser —  
you'll find Champion, the  
better spark plug, more de-  
pendable — more efficient  
— and more economical.



## CHAMPION

*Spark Plugs*  
TOLEDO, OHIO

## SQUADRON SAIL COMMITTEE

Mark Hanna, D. Y. C., *Chairman*  
 Com. Sidney Frohman, S. Y. C.  
 Com. Henry Thomas, C. Y. C.  
 Com. G. H. Wood, D Y. C.  
 J. B. Farr, D. Y. C.  
 C. B. Seiders, D. Y. C.  
 T. P. Archer, B. Y. C. of Detroit  
 Milton Knight, T. Y. C.  
 Chas. L. Wood, M. Y. C.  
 Jos. Krolik, D. B. C. Y.  
 Jno. H. French, G. P. Y. C.  
 Geo. Weitzel, L. S. C. C.  
 Chalmer Burns, C. Y. C.  
 Walter X. Brennan, M. B. C.  
 Wm. F. Meier, E. Y. C.  
 Julius Morgan, B. Y. C., Toledo  
 B. S. Knapp, M. Y. C.  
 Harry B. Vincent, E. Y. C., Erie, Pa.  
 A. G. Smith, P. B. Y.  
 James H. Reed, C. Y. C., Cleveland  
 C. A. Thornburgh, S. Y. C.  
 E. H. Reed, I. Y. & C. C.  
 Jno. A. Tallman, T. Y. C.  
 Carl Torgler, M. R. Y. C.  
 L. J. Beckert, O. R. Y. C.  
 Chas. Fast, B. L. Y. C.  
 O. E. Sovereign, B. C. Y. C.  
 Glenn S. Martin, V. B. C.  
 Dr. Miller, W. B. C. (Walkerville Boat Club)  
 Jno. H. Cox, Cleve. Met. Y. C.  
 Dr. Trombley, L. Y. C.

## TROPHY COMMITTEE

Com. John W. Koehrman, T. Y. C., *Chairman*  
 Com. Howard Jones, T. Y. C.  
 Com. J. H. Reed, C. Y. C.  
 Com. H. M. Hill, Jr., B. C. C.  
 Harry Larkin, B. Y. C.  
 Thornton Dixon, M. Y. C.  
 Com. Chas. Kotcher, B. Y. C.  
 Dr. C. H. Burton, Mohawk B. C.

**Permanent Mould** **CASTINGS**  
**Aluminum Alloy**

— ALSO —

**Sand Foundry For Brass and Bronze Castings**

Alloyed to specifications. Heat treatment.  
 Complete machining if desired. Quantity  
 production.

**TOLEDO ALLOYED CASTINGS CO.**

Hamilton and Division Streets  
 PHONE MAIN 5637



## There's Power to Spare in the New USL

Remember the last time your battery was too weak to start the car? You probably wished you had a spare battery as well as a spare tire. What would you have given then for a battery with 20 to 30% more starting power, when starting is hardest? What would it have saved you in inconvenience, delay and expense? The new USL battery delivers 20 to 30% more starting power under adverse conditions. Many tests have shown as high as 54% increased power. This margin of safety in battery performance adds immeasurably to the satisfaction enjoyed by USL users. It means plenty of power when you need it most. You can count on the USL for that *extra* turn of the starter that will set your motor humming. Your nearest USL service station can supply this new battery at prices lower than ever before.

USL Battery Corporation • Niagara Falls, N. Y.

**USL** AUTO *and* RADIO  
Batteries

## LADIES ENTERTAINMENT COMMITTEE

Mrs. Mark Hanna, D. Y. C., *Chairman*  
Mrs. E. H. Reed, T. Y. C.  
Mrs. H. M. Hill, B. C. C.  
Mrs. F. W. Roberts, C. Y. C.  
Mrs. R. A. Luedtke, T. Y. C.  
Mrs. T. A. DeVilbiss, T. Y. C.  
Mrs. J. H. Reed, C. Y. C.  
Mrs. C. D. Cummings, B. Y. C.  
Mrs. C. R. Keys, B. Y. C.  
Mrs. G. S. Martin, V. B. C.  
Mrs. O. E. Sovereign, B. C. B. C.  
Mrs. Harry G. Hammond, D. Y. C.  
Mrs. W. X. Brennan, M. B. C.  
Mrs. B. S. Knapp, M. Y. C.  
Mrs. Wm. F. Meier, C. Y. C.  
Mrs. A. G. Smith, P. B. Y. C.  
Mrs. T. P. Archer, D. Y. C.  
Mrs. Chalmer Burns, D. Y. C.  
Mrs. Geo. Weitzel, M. B. C.  
Mrs. John H. French, D. Y. C.  
Mrs. Henry Vincent, E. Y. C.  
Mrs. Julius E. Morgan, B. V. Y. C.  
Mrs. J. A. Tallman, T. Y. C.  
Mrs. J. H. Cox, C. M. Y. A.  
Mrs. Chas. Fast, B. L. Y. C.  
Mrs. Carl Torgler, M. R. Y. C.  
Mrs. Lee Faunce, O. R. Y. C.  
Mrs. Oliber True, P. C. Y. C.  
Mrs. Frank Hubbard, M. R. Y. C.  
Mrs. Miller, W. B. C.

## ENTERTAINMENT COMMITTEE

Frank Frey, T. Y. C., *Chairman*  
Dr. Paul Kuebler, T. Y. C.  
Clarence Moon, T. Y. C.  
Lee Keller, S. Y. C.  
T. B. Alexander, P. I. B. Y. C.  
Ed Zerbe, D. Y. C.  
O. G. Voss, C. Y. C.  
Harry V. Bisgood, B. C. C.  
Frank Stoner, M. Y. C.  
J. B. Smith, T. Y. C.

## PROGRAM COMMITTEE

J. L. Gruber, T. Y. C., *Chairman*  
Howard Jones, T. Y. C.  
Howard Ickes, T. Y. C.  
Chas. H. Bowers, T. Y. C.  
Ed. J. Tippet, T. Y. C.  
C. D. Cummings, D. Y. C.  
J. W. Fraser, M. R. Y. C.  
Walter X. Brennan, M. B. C.

*We carry a complete stock of*

SPECIAL CARBON  
and ALLOY STEELS

# Craine-Schrage Steel Company

*〔Cutting and Shearing〕  
〔Facilities Unexcelled〕*

Welding Wire, Music Wire, Flat  
Wire, Tool Steels, Cold Finished  
Steels, Rounds, Squares, Hexagons,  
Flats, Free Cutting Bessemer Screw  
Stock, Turned and Polished Shaft-  
ing, Cold Rolled Strip Steel, Drill  
Rods.

*General Offices and Warehouse*  
6189 Hamilton Ave., Detroit, Mich.

Phone, Northway 5424-5-6

TOLEDO OFFICE  
419 Ohio Building  
Phone, MAin 2590

## PRIZE DISTRIBUTION COMMITTEE

John L. Dexter, *Chairman*  
 W. F. Broer, T. Y. C.  
 Harry Austin, D. B. C. Y.  
 J. B. Smith, T. Y. C.

Harold Jones, T. Y. C.  
 Fred D. Lorimer, L. S. C. C.  
 August Benhoff, T. Y. C.  
 Albert Wakefield, V. B. C.

COMMITTEE TO SELECT CLASS "R" REPRESENTATIVE IN  
Y. R. U. CUP RACE

Dr. C. G. Jennings, D. C. C.  
 Dr. W. A. Wilson, B. V. Y. C.  
 Otto F. Barthel, D. Y. C.

CROSLEY  
RADIOS

*Ask  
 your nearest  
 dealer for a  
 five day  
 free trial*

*Distributed by*  
 The Aitken Radio Co.  
 DETROIT TOLEDO DAYTON

*The*  
 KELSEY  
 & FREEMAN  
 LUMBER  
 CO.

*Lumber Dealers Since 1856*

1225 Indiana Avenue  
 3025 Summit Street  
 Down Town Lumber Store  
 244 Erie Street

TOLEDO, OHIO

MILLER'S BOAT LIVERY  
 LAUNCHES---ROW BOATS

We Will Take You Anywhere---Any Time

*Phone 42-W*  
 PUT-IN-BAY, OHIO

*[Retail Ice]*

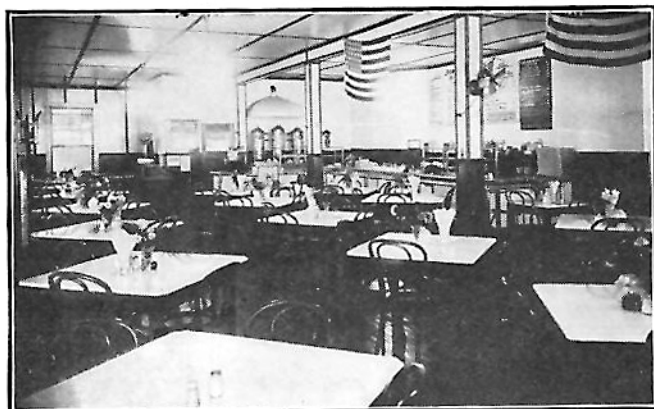


*For Discriminating People*  
IN TOLEDO IT'S THE  
**SECOR**

Home-like atmosphere, centrally located,  
excellent cuisine and courteous treatment.

KEENAN SYSTEM

L. H. LIMECOOLY  
*Resident Manager*



PUT-IN-BAY CAFETERIA  
*"Jim's Place"*

Most Up-to-Date—Prices Very Reasonable—Parties by Arrangement  
Special Rates for Inter-Lake Yachtsmen

J. A. POULOS, Prop.

PUT-IN-BAY, OHIO

## YACHTING ASSOCIATION PRIZES

The Inter-Lake Yachting Assn. is indebted to the following donors for the trophies and other prizes listed and the Trophy Committee wishes to take this opportunity of thanking these individuals and firms and assure them that the donations are most sincerely appreciated.

### SAIL BOAT RACES

#### First Prizes

|                                |                             |
|--------------------------------|-----------------------------|
| Class "A"                      | W. F. Broer, Trophy         |
| Class "J & H"                  | I. L. Y. A. Trophy          |
| Class "CC"                     | L. E. Beckwith, Trophy      |
| Class "K"                      | John T. Rohr Trophy         |
| Class "CK"                     | W. C. Noack & Sons Trophy   |
| Class "R"                      | Com. J. W. Koehrman Trophy  |
| Class "Star"                   | Henry Page Trophy           |
| Class "Y"                      | Com. E. H. Reed Trophy      |
| Class "Dinghy"                 | I. L. Y. A. Trophy          |
| Class "I. L. Y. A. One design" | Com. T. A. DeVilbiss Trophy |

### POWER BOAT RACES

#### First Prizes

|           |                           |
|-----------|---------------------------|
| Class "A" | R. H. Stranahan Trophy    |
| Class "F" | Com. J. W. Tallman Trophy |
| Class "G" | C. O. Miniger Trophy      |
| Class "H" | Com. E. H. Reed Trophy    |
| Class 650 | R. H. Scribner Trophy     |
| Class 510 | Frank Stranahan Trophy    |
| Class 151 | Dr. E. B. Gillette Trophy |

### OUTBOARD

|                         |                           |
|-------------------------|---------------------------|
| Class "B"               | I. L. Y. A. Trophy        |
| Class "C"               | I. L. Y. A. Trophy        |
| Free For All            | I. L. Y. A. Trophy        |
| Commodore Cat Boat Race | I. L. Y. A. Trophy        |
| Ladies' Cat Boat Race   | Com. Chas. Kotcher Trophy |

### THE NORTHRUP TROPHY

#### COM. HARRY A. PARSONS TROPHY

The winner of the Class "R" series will be awarded the Com. A. Parsons and also the Captain Louis G. Northrup Memorial Trophies.

#### COM. R. GEORGE MARSH FLAG

Commodore R. Geo. Marsh will present a flag to the Yacht Club having the largest number of members registered at the Regatta.

### OTHER PRIZES

A number of prizes were received too late to list the donors' names. The Trophy Committee wishes to thank all these donors, however, and to let them know that we appreciate their gifts greatly. The committee reserves the right to re-arrange prizes as necessary.

# 1928 Hackercraft DOLPHINS

*America's Finest Runabouts*

If there is any question in your mind about who is the greatest designer of fast boats, an inspection of the 1928 Hackercraft Dolphins will settle the question for you beyond any shadow of doubt. John Hacker has produced more successful racers and fine custom built boats than any other designer or builder. And the new Dolphins are easily his greatest creations.

You must see these boats—study every feature of their construction, ride in them, and compare the performance, seaworthiness and riding comfort with any boat you ever saw. After this experience you will readily agree they are America's finest runabouts.

**24, 26 and 29 ft.—\$2,975 to \$5,850**

|                                      |                           |         |
|--------------------------------------|---------------------------|---------|
| 29 ft. Dolphin Sedan, ten passengers | -----40-42 miles per hour | \$5,850 |
| 29 ft. Dolphin, eleven passengers    | -----40-42 miles per hour | 4,950   |
| 26 ft. Dolphin, Jr., nine passengers | -----40-42 miles per hour | 4,275   |
| 26 ft. Sea Lyon Sedan, 9 passengers  | -----40-42 miles per hour | 4,600   |
| 26 ft. Sea Lyon, nine passengers     | -----40-42 miles per hour | 4,000   |
| 24 ft. Baby Dolphin, nine passengers | -----30-34 miles per hour | 2,975   |

*Prices quoted f. o. b. Mt. Clemens, Michigan*

*Write today for more complete data  
Demonstrations arranged by appointment*

**HACKER BOAT COMPANY**  
MT. CLEMENS, MICHIGAN



## GENERAL INFORMATION

Headquarters—Put-in-Bay Yacht Clubhouse.

Secretary-Treasurer's office hours: 11:00 A. M. to 12:30 P. M., 4:00 P. M. to 6:00 P. M.

All visiting yachtsmen and ladies must register.

No entry fee will be charged in any event.

Sign your entry and state clearly all answers to questions.

Every yacht should be measured by the measurer of its home club and measurer's signature should be on entry blank.

All yachtsmen of the Inter-Lake and invited clubs, whether yacht owners or not, are invited and urged to participate in all of the events of the week and have their ladies participate wherever possible, to make the week successful in every way.

Get your entry in early to assist the committees.

All schedules subject to change as necessary. Watch Bulletin.

Obtain entry blanks, racing numbers and racing information at Headquarters.

Postponements, changes in courses or events, results and all official announcements will be posted on the Bulletin Board at Headquarters. Watch it.

Two or more entries must be received or an event will be cancelled.

Prizes in any event will be awarded according to number of entrants. If two entrants, only one prize will be awarded; If three entries, two prizes, etc.

Ball Tickets, Banquet Tickets, etc., may be purchased at Headquarters.

The "Priscilla" will be the flagship of Commodore E. H. Reed. All yachtsmen and others attending the regatta are invited to visit the flagship at any time during the meet.

All events of the regatta will be started promptly on time. Be on your mark.

The official time used at meet will be Put-in-Bay Yacht Club time, according to clock at Headquarters.

*The Medbury-Ward Co.*  
*Artists • Engravers • Color Plate Makers*  
1701 SPIELBUSCH  
TOLEDO, OHIO





Day after day . . . week after week . . . month after month . . . Chris-Craft continues on its record-breaking wave of popularity! As the world's largest builders of all-mahogany motor boats, Chris-Craft is setting a terrific pace. Sales for the first *five* months of this year were 25 per cent greater than for all of 1927.

It's a Chris-Craft year! Standardization and volume production have done the same thing to motor boat

values that they did to automobile values. Values are higher than ever before. Prices are lower. No one any longer need deny himself the enjoyment of a Chris-Craft! Hundreds have bought and more are buying every day.

Order your Chris-Craft now. Eleven magnificent models await your inspection. For further information see one of the dealers whose names are given, or write the factory direct.

**CHRIS SMITH & SONS BOAT COMPANY**  
707 DETROIT ROAD ALGONAC, MICHIGAN

**\$2,235 to \$9,750** 22 to 30 Feet — 30 to 45 Miles  
an Hour — 82 to 200 Horsepower

LAKE CITY MOTORS, Inc.,  
222 22nd Street, Toledo, O.

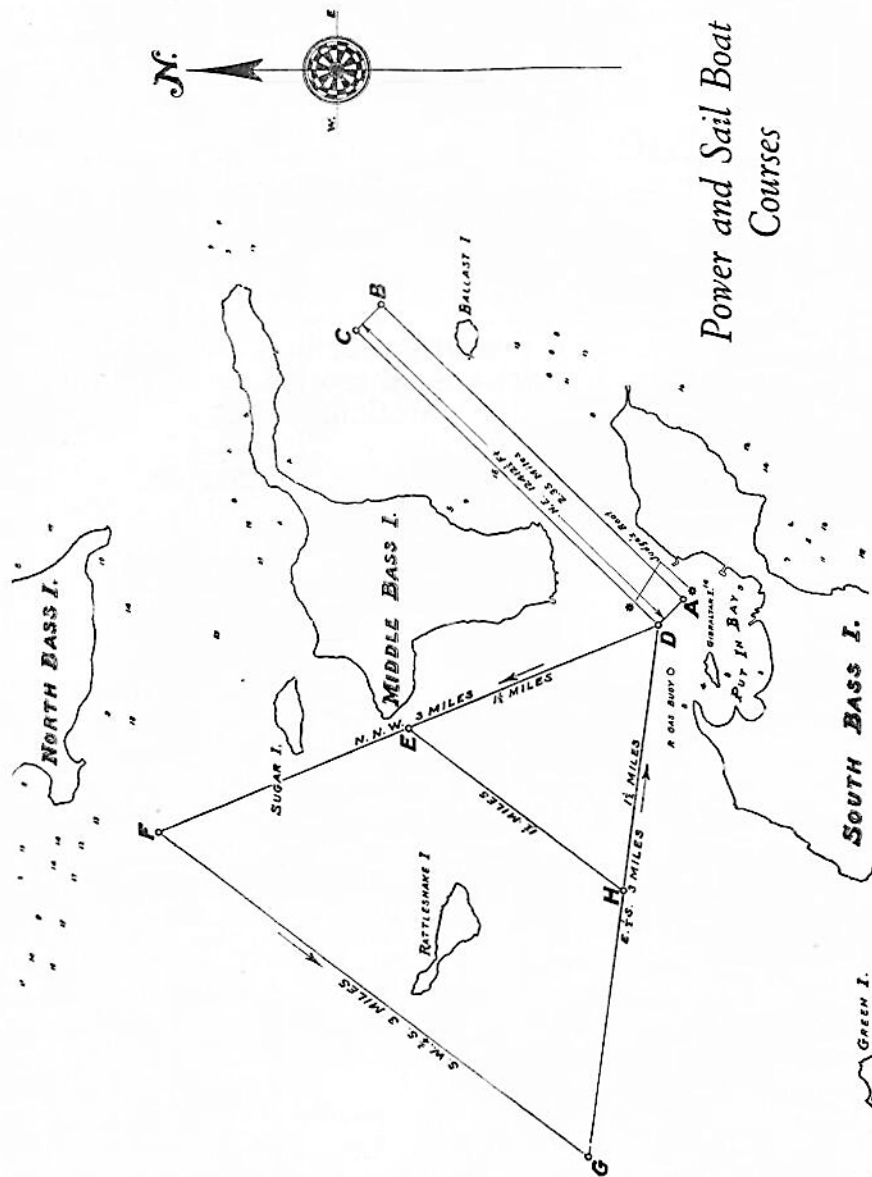
WORTHY BROWN,  
Lakeside, O.

LAKE ERIE YACHT BROKERAGE CO.  
1365 W. 117th Street, Cleveland, O.

DETROIT FACTORY BRANCH,  
3107 E. Jefferson Ave., Detroit, Mich.

# Chris-Craft

*World's Largest Builders of All-Mahogany Motor Boats*



# TOBIN BRONZE

## *The Choice of the Industry*

**P**RACTICALLY every motor boat manufacturer in the United States uses Tobin Bronze as standard equipment for shafting and other underwater parts.

These manufacturers rely upon Tobin Bronze for dependable transmission of power because they have proved its high resistance to corrosion and its ability to withstand continuous vibration.

Tobin Bronze is a specific alloy manufactured solely by The American Brass Company. It is furnished in the form of sheets, rods, tubes and specially straightened shafting, with "Tobin Bronze" rolled in the metal for your protection.

EVERDUR [Manganese-Silicon Bronze] is also an exclusive Anaconda alloy. It is as strong as steel, permitting the reduction in size and weight required for speed boat shafting without sacrificing the margin of safety. Like Tobin Bronze, Everdur is highly resistant to corrosion.

### **THE AMERICAN BRASS COMPANY**

General Offices: Waterbury, Connecticut  
Offices and Agencies in Principal Cities



Canadian Mill: Anaconda American Brass Limited,  
New Toronto, Ontario



Tobin Bronze Trademark Reg. U. S. Pat. Off. and  
in Canada

# PROGRAM

## AFTERNOON

### MORNING

#### SUNDAY, JULY 8th

Long Distance Sail Yacht and Power Boat Races  
—All Classes.  
Bob Lo Island to Put-in-Bay, D. R. Y. A.  
Rocky River to Put-in-Bay, C. Y. C.  
Maumee River to Put-in-Bay, T. Y. C.  
Power Boat—Cleveland to Put-in-Bay, E. Y. C.

Registration at I. L. Y. A. Headquarters

Services St. Paul's Church.

### EVENING

#### MONDAY, JULY 9th

9:30—Committee meeting at Headquarters. ?  
All Committeemen please attend.  
10:00—Baseball Game.

2:00 to 4:00—Open house aboard the Flagship  
"Priscilla."—All registered yachtsmen invited  
to attend.

6:30—Yachtsmen's Dinner. Hotel Crescent. Bring  
the ladies.

#### TUESDAY, JULY 10th

8:30—Sail Yacht Races. All Classes.

1:50—Power Boat Races. All Classes.

8:30—Parade formation at Town Hall.

9:00—MARDI GRAS PARADE.  
10:00—Grand Carnival and Mardi Gras Ball at  
Colonial.

#### WEDNESDAY, JULY 11th

8:30 Sail Yacht Races. All Classes.

1:50—Power Boat Races. All Classes.  
2:00—Ladies' Lawn Party. Bay View Hotel.

8:30—Commodore's Reception aboard Str. "Chip-  
pewa." Dancing and Moonlight ride.

#### THURSDAY, JULY 12th

8:50—Power Boat Races. All Classes.  
10:00—Model Yacht Races.

12:30—Swimming Championships.  
2:00—Squadron Sail.  
4:00—Commodore's and Ladies' Cat Boat Races.

9:00—Yachtsmen's Ball. Colonial Pavilion.

#### FRIDAY, JULY 13th

8:30—Sail Yacht Races. All Classes.

8:00—Distribution of Prizes. Hotel Crescent.

#### SATURDAY, JULY 14th

Cruise to Port Clinton, Ohio—Guests of Port  
Clinton Yacht Club.



Grebe Synchronphase Seven \$135



Grebe  
Natural  
Speaker  
\$35

## A Grebe Synchronphase Seven Will Complete Your Yacht

No yacht is complete without a radio set. Yet even the owner of the most modest yacht wants the best possible reception. The unusually superior reception of the Grebe Synchronphase Seven, due to exclusive features, will satisfy the most exacting.

Ask your dealer to demonstrate

**Detroit Electric Co.**  
210 Summit St., Toledo, O.



**The GREBE**  
**SYNCHROPHASE**  
TRADE MARK REG. U. S. PAT. OFF.  
**RADIO**

## SAIL YACHT PROGRAM

### CLASSIFICATIONS

|                        |                               |
|------------------------|-------------------------------|
| A—Cabin Cruisers       | K—15 Ft. Cats (Private Owned) |
| Inter Lake One Design  | CK—15 Ft. Cats (Club Owned)   |
| J—16 Ft. also Class H. | R—Sloops                      |
| CC—Cabin Cats          | S—Star Class                  |
| D—Dinghies             | Y—Yawls                       |

### STARTING TIME—SAIL YACHTS

|                          |      |              |
|--------------------------|------|--------------|
| Warning Gun              | 8:30 | A. M.        |
| Preparatory Gun          | 8:45 | A. M.        |
| Start Class "R"          | 8:55 | Long Course  |
| Start Class "A"          | 9:00 | " "          |
| Start Class "Y"          | 9:05 | " "          |
| Start Class "H & J"      | 9:10 | Short Course |
| Start Class "One Design" | 9:15 | " "          |
| Start Class "S"          | 9:20 | " "          |
| Start Class "K"          | 9:25 | " "          |
| Start Class "CK"         | 9:30 | " "          |
| Start Class "CC"         | 9:35 | " "          |
| Start Class "D"          | 9:40 | " "          |

# Toledo Sales & Engine Co.

MARINE FITTINGS  
and SUPPLIES

16 N. St. Clair Street . Toledo, Ohio

C. EARL SHANTEAU, Pres. and Mgr.  
HENRY T. BOWERS, Secy. and Treas.

*Now on Display* **NASH**

The  
"400" SERIES  
a delight to drive

*A New & Finer Motor Car*

THE DOAN MOTOR COMPANY, *Distributors*  
Adams and Tenth Streets TOLEDO, OHIO Telephone MAin 1191

Starting time for Richardson Cup (YRU) elimination races for Class "R" and Western Lake Erie Fleet "Star" Class Championship races will be posted on bulletin board at Headquarters.

SCHEDULE OF RACES

Tuesday A. M.—All Classes.

Wednesday A. M.—All Classes.

Wednesday P. M.—\*Richardson Cup (YRU) Elimination Race for Class "R."

Wednesday P. M.—°Western Lake Erie Fleet "Star" Class Championship.

Thursday A. M.—\*Richardson Cup (YRU) Elimination Race for Class "R."

Friday A. M.—All Classes.

\*Special races arranged to decide Class "R" boat to represent the I. L. Y. A. at the Great Lakes Inter-Association race to be held at Rochester, September 3rd, 4th and 5th and compete for Richardson Championship Trophy.

°Special race arranged to decide "Star" Class Championship of Western Lake Erie Fleet.

ESTABLISHED 1894

ADams 5141-5142

**GOULDEN MARKET CO.**

**FISH---OYSTERS---POULTRY**

*The Largest Fish Supply House to Hotels, Clubs, Hospitals, Etc., in Toledo*

[ Frogs, Soft Shell Crabs, Lobsters ]  
[ Scallops, Shrimps, Clams, Etc. ]

515 Monroe Street

TOLEDO, OHIO



## RULES

Certificate of measurement must be filed with entry. The Sail Yacht Regatta Committee reserves the right to order any yacht entered re-measured.

Races for all classes, starting five minutes apart on Tuesday, Wednesday and Friday mornings; starting first class at 8:55 A. M.

All races under Y. R. U. and I. L. Y. A. Rules, as amended to date.

In Class C. K. championship flag goes to skipper making highest percentage, cup to club having highest percentage with three boats.

Entries for all point races must be made with Sail Yacht Regatta Committee at headquarters before 6 P. M. Monday, July 9th, unless competing yacht arrives too late to enter before this time.

Alterations of the race program or sailing course may be made at the discretion of the Sail Yacht Regatta Committee. Such changes will be posted on Bulletin Board.

Numbers must be carried by each yacht on each side of its mainsail. These numbers will be supplied by the Sail Yacht Regatta Committee at Headquarters.

No person other than the Judges, Regatta Committee and Clerks will be allowed on Judges' boat without the consent of the Chairman of the Sail Yacht Regatta Committee.

All stakes to be left to port unless changed by Regatta Committee. If the Regatta Committee decides to reverse the course and have stakes



### *This Certifies—*

When your printed matter comes in neat packages bearing the above trademark, you may rest assured that you have purchased good typography, and careful presswork but without paying a heavy premium.

*The*  
**TOLEDO PRINTING CO.**  
 317-323 Tenth Street - TOLEDO, O.

E. J. TIPPETT

E. E. TAYLOR

# U.S.L. Batteries



*Distributed by*  
**ELECTRIC POWER  
 MAINTENANCE CO.**  
 TOLEDO, OHIO

left to starboard, a green flag will be flown from judges' boat. Red flag will mean all stakes to port. The judge's boat will fly a white flag with blue letters R. C.

Guns must not be fired from any yacht within one hour of the time of starting races, and not until after every yacht has crossed the finish line.

All vessels following the races must keep to leeward, and at such distance as not to interfere with the maneuvers of the competing yachts.

The races are open to every yacht which complies with the rules and which is regularly enrolled in any club in the Inter-Lake Yachting Association, Y. R. U., or which has been invited to participate in the races.

All boats sailing the long outside course will have four hours' time limit.

All boats sailing the short inside course will have three hours' time limit.

## SAIL BOAT RACES

### First Prizes

|                                      |                             |
|--------------------------------------|-----------------------------|
| Class "A" -----                      | W. F. Broer Trophy          |
| Class "J & H" -----                  | I. L. Y. A. Trophy          |
| Class "CC" -----                     | L. B. Beckwith Trophy       |
| Class "K" -----                      | John T. Rohr Trophy         |
| Class "CK" -----                     | W. C. Noack & Sons Trophy   |
| Class "R" -----                      | Com. J. W. Koehrman Trophy  |
| Class "Star" -----                   | Henry Page Trophy           |
| Class "Y" -----                      | Com. E. H. Reed Trophy      |
| Class "Dinghy" -----                 | I. L. Y. A. Trophy          |
| Class "I. L. Y. A. One Design" ----- | Com. T. A. DeVilbiss Trophy |

### THE NORTHRUP TROPHY

#### COM. HARRY A. PARSONS TROPHY

The winner of the Class "R" series will be awarded the Com. A. Parsons and also the Captain Louis G. Northrup Memorial Trophies.

*Greetings, Yachtsmen! "Service Plus Hospitality" at*

**"THE COLONIAL"**

**DANCING—BOWLING**

Lunches and Plate Dinners  
Sodas, All Kinds of Cold Drinks

MODERATE PRICES

**FRANK BOLE**  
*Manager*

## LADIES' CAT BOAT RACE

Ladies' Cat Boat Race. Com. Chas. Kotcher Cup.

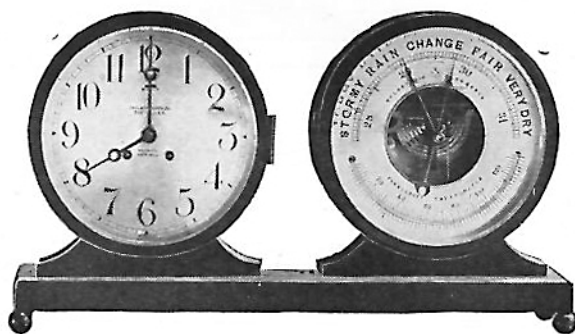
## COMMODORES' CAT BOAT RACE

Commodores' Cat Boat Race. I. L. Y. A. Cup

## SAILING COURSES

The course for all series races for sailing yachts in Classes A, R, and Y will be triangular, starting from a line between a flag buoy off the east end of Gibraltar Island and a similar flag buoy in line with the west end of Middle Bass, to and around a stake three nautical miles N. N. W., thence to and around a stake three nautical miles S. W. three-quarters S., thence to and around a stake three nautical miles, E. one-half S. to and across starting line between starting stakes. In finishing yachts must cross the starting line in the opposite directions from which they start. All stakes must be left to port, unless otherwise ordered by the Sail Yacht Regatta Committee as heretofore provided.

The course for Classes One Design, Star, H, J, K, CC, CK, and D, starting from the same line, will be a shorter triangle with the same compass courses, but with one and one-half miles to the side, or a total of four and one-half nautical miles.



### *Ship's Bell Clock and Barometer*

We have an unusual line of TROPHIES,  
particularly suitable for Yachting events.



THE W. F. BROER COMPANY

Adams & Superior Sts.

*Jewelers*

TOLEDO, OHIO

## RULES COVERING CLASS "Y" (CRUISING YAWLS)

All yachts in this class will be governed by the Y. R. U. rules, and will obtain their measurement rating under the Y. R. U. rules, with following exceptions:

Use of pot lead or similar compounds prohibited.

Measurement shall be determined with full cruising equipment aboard, and all such equipment shall be carried aboard throughout all races (not including dinghy).

Two per cent will be added to actual sailing time of yachts without engine as allowance to yachts with engine.

Yachts equipped with engine shall have engine sealed.

There will be no restrictions on the number of passengers carried in this class of races.

**CLASS STAR:** Rules of the Star Class Yacht Racing Association to govern.

### TIME ALLOWANCE

Time allowance will be computed on yachts in Classes A and Y, under the formula and table of the Yacht Racing Union, 1923 Rules.

### WATCH BULLETIN BOARD

There will be a Bulletin Board at Headquarters where changes in program and special instructions will be posted throughout the week.

All yachts whose preparatory gun has not been fired must keep clear of starting line. Any yacht wilfully violating this rule will be disqualified.

*East Toledo Yard*  
Starr Ave. & T. T. Ry.

*West Toledo Yard*  
Sylvania, Ohio

**Hixon-Peterson Lumber Co.**  
OPERATORS OF YARDS IN OHIO AND MICHIGAN



TOLEDO, OHIO

*Display Rooms*  
Madison and 12th

*Main Yard*  
Clinton near Oakwood

## POWER BOAT EVENTS

| Class | Classification<br>Type                                |
|-------|---|
| A     | Open boats.   |
| E     | Cruisers measuring under 40 feet.                     |
| F     | Cruisers measuring 40 to 60 feet.                     |
| G     | Cruisers measuring 60 feet and over.                  |
| H     | Express cruisers.                                     |
|       | 650 cubic-inch restricted class displacement racers.  |
|       | 510 cubic-inch restricted class displacements racers. |
|       | 151 cubic-inch restricted class displacement racers.  |

TUESDAY, JULY 10, 1928

Preparatory Gun at 1:30 P. M.

| Class | Start | Dis.     | Type of Boats                    |
|-------|-------|----------|----------------------------------|
| A     | 1:50  | 10 Miles | Open boats.                      |
| E     | 2:00  | 10 Miles | Cruisers 40 and under.           |
| F     | 2:20  | 10 Miles | Cruisers 40 to 60.               |
| G     | 2:30  | 10 Miles | Cruisers 60 and over.            |
| H     | 2:40  | 10 Miles | Express cruisers.                |
| 650   | 3:00  | 20 Miles | 650 cu. in. displacement racers. |
| 510   | 3:30  | 20 Miles | 510 cu. in. displacement racers. |
| 151   | 4:00  | 20 Miles | 151 cu. in. displacement racers. |

WEDNESDAY, JULY 11

Preparatory Gun at 1:30 P. M.

| Class | Start | Dis.     | Type of Boats                    |
|-------|-------|----------|----------------------------------|
| A     | 1:50  | 10 Miles | Open boats.                      |
| E     | 2:00  | 10 Miles | Cruisers 40 and under.           |
| F     | 2:20  | 10 Miles | Cruisers 40 to 60.               |
| G     | 2:30  | 10 Miles | Cruisers 60 and over.            |
| H     | 2:40  | 10 Miles | Express cruisers.                |
| 650   | 3:00  | 20 Miles | 650 cu. in. displacement racers. |
| 510   | 3:30  | 20 Miles | 510 cu. in. displacement racers. |
| 151   | 4:00  | 20 Miles | 151 cu. in. displacement racers. |

THURSDAY, JULY 12

Preparatory Gun at 8:40 A. M.

| Class | Start | Dis.     | Type of Boats                    |
|-------|-------|----------|----------------------------------|
| A     | 9:00  | 10 Miles | Open boats.                      |
| E     | 9:10  | 10 Miles | Cruisers 40 and under.           |
| F     | 9:30  | 10 Miles | Cruisers 40 to 60.               |
| G     | 9:40  | 10 Miles | Cruisers 60 and over.            |
| H     | 9:50  | 10 Miles | Express cruisers.                |
| 650   | 10:10 | 20 Miles | 650 cu. in. displacement racers. |
| 510   | 10:40 | 20 Miles | 510 cu. in. displacement racers. |
| 151   | 11:10 | 20 Miles | 151 cu. in. displacement racers. |

## POWER BOAT RACING RULES

1. Entries for all Power Boat races must be filed at I. L. Y. A. Headquarters before 6:00 P. M., July 9, 1928.
2. All boats are to be rated in statute miles per hour by the measurer of their home club or be run over a measured course with the I. L. Y. A. measurer or assistant.
3. Certificate of rating shall be filed with entry blank.
4. Races will consist of three heats on three successive days, each heat being a handicap race, the slowest rated boat starting at the time set by the race schedule, the fastest boat starting last.
5. Starting times for all handicapped boats will be posted at headquarters before the race.
6. Points for finish position will be awarded according to Rule XXIX of the A. P. B. A. as follows:

|                              |     |        |
|------------------------------|-----|--------|
| First boat to finish.....    | 400 | Points |
| Second boat to finish.....   | 361 | "      |
| Third boat to finish.....    | 324 | "      |
| Fourth boat to finish.....   | 289 | "      |
| Fifth boat to finish.....    | 256 | "      |
| Sixth boat to finish.....    | 225 | "      |
| Seventh boat to finish.....  | 196 | "      |
| Eighth boat to finish.....   | 189 | "      |
| Ninth boat to finish.....    | 144 | "      |
| Tenth boat to finish.....    | 121 | "      |
| Eleventh boat to finish..... | 100 | "      |
| Twelfth boat to finish.....  | 81  | "      |
| Etc.                         |     |        |

The boat making the most points in the three scheduled heats will be declared the winner unless, of course, it has been disqualified for infraction of rules.

7. In general the racing rules of the A. P. B. A. will hold.
8. Boats will be given a five percent time leeway under their calculated time for the course. Any boat running any heat of the race in a time less by 5 per cent than the rating filed with their entry will be

*Drink*

**WINDSOR DRY PALE GINGERALE**

A CENTURY OLD FORMULA

Improved to meet present day requirements. A Pale  
Dry that has no Peer and as a mixer no Superior.

**THE WINDSOR DRY GINGERALE COMPANY**

Toledo, Ohio . MAin 7117



automatically disqualified unless, in the judge's opinion, weather conditions have materially affected all boats' speeds. In any event handicaps for the second and third heats will be based on the fastest lap of each boat.

9. Summary: These rules have been drawn up; and their sole intent is to minimize as much as possible all differences in boat speeds, and to make seamanship and consistent performance the deciding factors.

## OUTBOARD EVENTS

Motors are divided into classes as follows:

B—Including 14 cu. in. and under 20 cu. in.

C—Including 20 cu. in. and under 30 cu. in.

Free for all—Any size motor.

Rules of boat and engine manufacturers as adopted for 1928 to be used. All motors must be stock models.

Boats and engine must be inspected and tagged before the start of each day's races.

Drivers of first five boats to finish must report to judge's boat for inspection immediately.

**MUFFLERS MUST BE USED AT ALL TIMES.**

All events are considered in the free for all driver divisions.

All boats must be numbered. In case of duplication new numbers may be assigned by chairman outboard committee.

Attendance at drivers meeting on first day of regatta compulsory.

# *The* CARBORUNDUM COMPANY

*Manufacturers of*

ABRASIVE and REFRACTORY  
MATERIALS



Niagara Falls, New York

*Tuesday, July 10th:*

Class B— 9:30 A. M. Warning gun— 9:35 A. M. Starting gun.

Class C—10:15 A. M. Warning gun—10:20 A. M. Starting gun.

Free for all

11:00 A. M. Warning gun—11:05 A. M. Starting gun.

*Wednesday, July 11th:*

Class B— 9:30 A. M. Warning gun— 9:35 A. M. Starting gun.

Class C—10:15 A. M. Warning gun—10:20 A. M. Starting gun.

Free for all

11:00 A. M. Warning gun—11:05 A. M. Starting gun.

*Thursday, July 12th:*

Special six boat team race Ohio vs. Michigan for perpetual trophy.

9:30 A. M. Warning gun— 9:35 A. M. Starting gun.

Class B—10:15 A. M. Warning gun—10:20 A. M. Starting gun.

Class C—11:00 A. M. Warning gun—11:05 A. M. Starting gun.

Free for all

11:45 A. M. Warning gun—11:50 A. M. Starting gun.

*Friday, July 13th:*

Start of Ohio Outboard Association outboard marathon, Put-in-Bay to Cleveland. For detailed information inquire at Judge's boat or Headquarters.

All entries must be made out at Headquarters or mailed to Chairman of Outboard Committee in advance.

Each boat entered for a sanctioned race must conform to Association Racing Rules 111 Article 1, I. L. Y. A.

The course is a straightway of  $\frac{1}{2}$  mile, 6 times around or 6 miles.

The boat making the most points in the three scheduled races for the class shall be declared the winner. Points to be awarded according to 1928 rules.

Prizes to be awarded for each class.

To save disqualification  
WEAR YOUR LIFE BELT

When you put in at the Bay go to

SCHNOOR & FUCHS

For your general merchandise, groceries, meats, fruit and vegetables in season. Fresh milk and cream. Tennis shoes, hardware and boat supplies.

## MODEL YACHT RACING

Sailing Yachts

Thursday July 12th, 10:00 A. M.

Free-for-all—No time allowance.

Start at 10:00 A. M.

Three Prizes: First, Second and Third

THURSDAY JULY 12th, 1:30 P. M.

Special Race

for

Three Winning Boats



### OTIS & CO.

Established 1899

#### MEMBERS

New York Stock Exchange  
 Cleveland Stock Exchange  
 Chicago Stock Exchange  
 Detroit Stock Exchange  
 Cincinnati Stock Exchange  
 New York Cotton Exchange  
 Chicago Board of Trade

#### CLEVELAND

|                  |            |
|------------------|------------|
| New York         | Chicago    |
| Denver           | Detroit    |
| San Francisco    | Cincinnati |
| Toledo           | Columbus   |
| Akron            | Louisville |
| Canton           | Massillon  |
| Colorado Springs |            |

## Seeking Proper Investment

IN OUR present day dependence upon specialists for efficiency, professional services are summoned immediately where need for such assistance exists. The doctor, lawyer and engineer are relied upon without hesitation in their ability to faithfully solve intricate problems.

It is comparatively recently that such a high degree of specialization has existed and this is especially true in the investment field. The investor is now relieved of the perplexities of proper investment through the activities of firms who give constructive financial aid to worthy organizations and thus provide an outlet for funds seeking investment.

A well planned workable procedure should be observed in formulating an aggressive investment account. It is just as important as an efficient working plan is to a successful business organization.

## OTHER SPORTS COMMITTEE I. L. Y. A.

Thursday 12:30 P. M.

Swimming

Center Dock

For Men

For Women

100 yards free style  
 100 yards breast stroke  
 100 yards back stroke  
 Fancy diving 10 ft. board.

100 yards free style  
 100 yards breast stroke  
 100 yards back stroke  
 Fancy diving 10 ft. board.

Open to all registered A. A. U. swimmers.

Entries to be filed with other sports committee, Care R. A. Luedtke,  
 Secretary Inter-Lake Yachting Association, 2105 Linwood Ave., Toledo,  
 Ohio, or on day of meet.

Medals and other trophies for winners.

4:00 P. M.

*Games on Shore*

Games for men and women—open to all.

Games for big and little, fat and lean and fast and slow.

Watch for bulletin at Headquarters, showing events.

# WILCOX

## TAILORED

*Sails---Boat Covers---Awnings  
 and Flags*

Wire and Manila Cordage, Yacht  
 Paints, Varnishes and Enamels,  
 Boat Hardware and Fittings

### THE M. I. WILCOX COMPANY

210 Water Street . Toledo, Ohio



Many  
Hydroplane  
Victories  
Won on  
**New Departure Ball Bearings**

A whole fleet of records have recently been overhauled by Ralph Snoddy and his gallant trio of hydroplanes, *The Spitfire*, *Miss Rioco* and *Angeles "I."*

New Departure Ball Bearings rigidly support the gears driving the overhead cam shafts and reduce the friction and heat which would destroy plain bearings in the supercharger impellers.

Mr. Snoddy gives New Departures their share of credit for the remarkable performance of the Miller engines with which these crafts are powered.

New Departure Ball Bearings reduce maintenance expense and add long life in every kind of industrial machinery and in automobiles, aeroplanes and agricultural machinery.

THE NEW DEPARTURE MANUFACTURING COMPANY  
Bristol, Connecticut  
Detroit      San Francisco      Chicago

**New Departure**  
Quality  
**Ball Bearings**



## ENTERTAINMENT PROGRAM

Yachtsmen and ladies are requested to register at Headquarters on arrival.

Those desiring to view Sail Yacht races from yachts are urged to inquire at Headquarters and they will be placed aboard private yachts if possible. Yacht owners are asked to leave word at Headquarters of their desire to co-operate to entertain visitors in this manner.

### Monday, July 9th

2:00-4:00 P. M. Open House for Yachtsmen aboard Flagship *Priscilla*.

6:30 P. M. Yachtsmen's Dinner, Hotel Crescent. Yachtsmen and ladies invited. \$2.00 per person. Number limited.

### Tuesday, July 10th

8:30 P. M. Assemble opposite Town Hall for parade.

9:00 P. M. Grand Carnival and Mardi Gras parade.

10:00 P. M. Grand Carnival and Mardi Gras Ball at Colonial. Tickets, \$1.50 per couple.

### Wednesday, July 11th

2:00 P. M. Ladies' Lawn Party, Bay View Hotel, in charge of Ladies' Entertainment Committee, Mrs. Mark Hanna, chairman.

8:30 P. M. Commodore's Reception aboard Steamer *Chippewa*. Dancing, entertainment, and moonlight ride.

### Thursday, July 12th

2:00 P. M. Squadron Sail. Yachtsmen and ladies not having yachts at the Bay are invited to ride aboard yachts participating. Apply at Headquarters and be on board before 2 P. M.

9:00 P. M. Yachtsmen's Ball, Colonial Pavilion. Tickets \$2.00 per couple. Extra ladies with escort, free. Dancing until 1:00 A. M.

### Friday, July 13

8:00 P. M. Prize distribution, Hotel Crescent Pavilion.

## NOTES

Yachtsmen—Do not forget to register.

Ladies—Do not forget to register and be sure and attend the Lawn Party Wednesday afternoon at the Bay View Hotel.

Remember the cruise to Port Clinton Saturday. All registered yachtsmen and ladies invited as guests of the Port Clinton Yacht Club.

See the races from Perry's Memorial Monument. A fine view of both the Sail Yacht and Power Boat courses.

The United States Coast Guard will patrol the course during the races.

Remember, this is your Regatta. You will enjoy it the more after making your contribution to the Yachtsmen's Fund. See Com. Chas. Lynch who will take your subscription.

TUESDAY—Mardi Gras Day. All clubs will join in the Mardi Gras parade in the evening. Everyone expected to join in the fun and frolic. Elegant prizes will be awarded for best costumes.

Remember the Port Clinton Cruise Saturday.

A number of prizes were received too late to list the donors' names. The Regatta Committee wishes to thank all these donors, however, and to let them know that it appreciates their gifts greatly.



*Quality and Service*  
**Cold Drawn Steel and Shafting**  
 Standard and Special Analysis

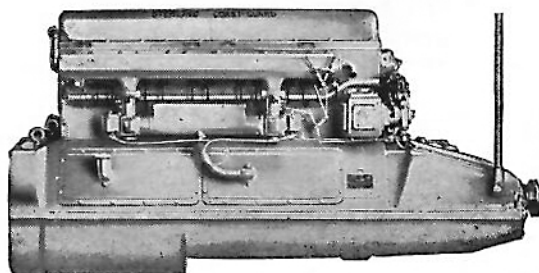
**BLISS & LAUGHLIN, Inc.**

ESTABLISHED 1891

*Mills and General Offices: Harvey, Illinois*  
*Chicago Phone: Commodore 1800*

*Chicago Warehouse:*  
 1023 - 1025 - 1027 West Jackson Boulevard  
 Phone: Monroe 6929

DETROIT OFFICE: Room 3-218, General Motors Bldg., Phone: Empire 9130



Dolphin Special 4 and 6 cyl. engines for racing and fast runabouts...180-290 H. P.  
 Dolphin 4, 6 and 8 cyl. engine for faster cruisers and runabouts...125-300 H. P.  
 Dolphin Medium 4, 6 and 8 cyl. engines for medium speed cruisers and fishing boats .....72-220 H. P.  
 Trident, 4, 6 and 8 cyl. slow turning engines for heavy cruisers, work boats and auxiliaries .....30-126 H. P.  
 Coast Guard, built only in 6 cylinders for heavy cruisers, express cruisers and house boats .....100-300 H. P.

Seagull, built only in 6 cylinders for runabouts and cruisers.....150 H. P.  
 Chevron 4 and 6 cyl. engines for cruisers 36 ft. and larger.....25-130 H. P.  
 Neptune, 2 cyl., 4 cycle, for cruisers, auxiliaries, fishing and trolling boats 12-15 H. P.  
 Petrel, 6 cylinders, for runabouts and cruisers .....150 H. P.  
 Petrel, 6 cyl. (Reduction Gear) 600 R. P. M. ....145 H. P.  
 Viking II, 6 and 8 cylinders for fast cruisers and heavy boats.....100-565 H.P.

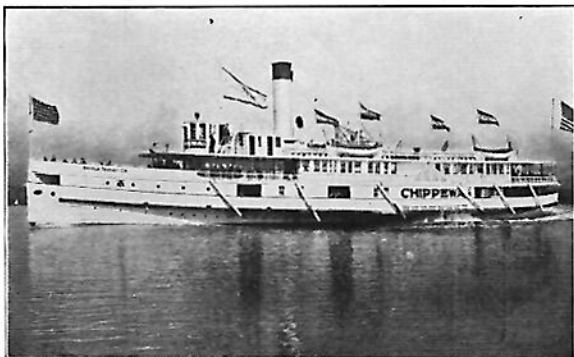
**STERLING ENGINE COMPANY**

1270 Niagara Street - Buffalo, New York

## Our Home Ship

Steamer *Chippewa*

The Commodore's reception will be held on Wednesday, July 11th, at 8:30 aboard the Steamer *Chippewa*.



for  
SALE

Eight room house. Lot 80x110 on sheltered harbor, 500 feet east of Put-in-Bay Yacht Club. Price \$3,800.00. M. N. Gallup, owner, 1620 Euclid Avenue, Cleveland, Ohio.



*The Most Beautiful Boat, Canoe, and Yacht Harbor  
on the Great Lakes is Now Under Construction at the*

## Catawba Cliffs Beach Club

3 1/2 MILES FROM PUT-IN-BAY

[Yachting, Boating, Golf, Tennis, Bathing]  
[and Every Outdoor Sport for Your Family]

*You Are Invited to Pay Us a Visit*

# *Yachtsmen's Fund*

*I. L. Y. A.*

## **HELP YOUR SPORT**

by mailing your annual contribution to the Yachtsmen's Fund to keep the Association going strongly for the fun you will have at the Bay and the fun you have had, the glorious Inter-Lake associations, the friends you make and the great sport you enjoy annually.

By your help the Regatta is made greater and the Permanent Fund in charge of the Board of Trustees grows larger so that the traditions and activities of the Inter-Lake are kept alive for your benefit and that of thousands of other yachtsmen up and down the Lakes.

The Yachtsmen's Fund is incorporated to receive contributions from yachtsmen toward the financing of the annual regattas and this is the way you can do your part.

Contribute To-day  
Mail your remittance to

*Yachtsmen's Fund, I. L. Y. A.*

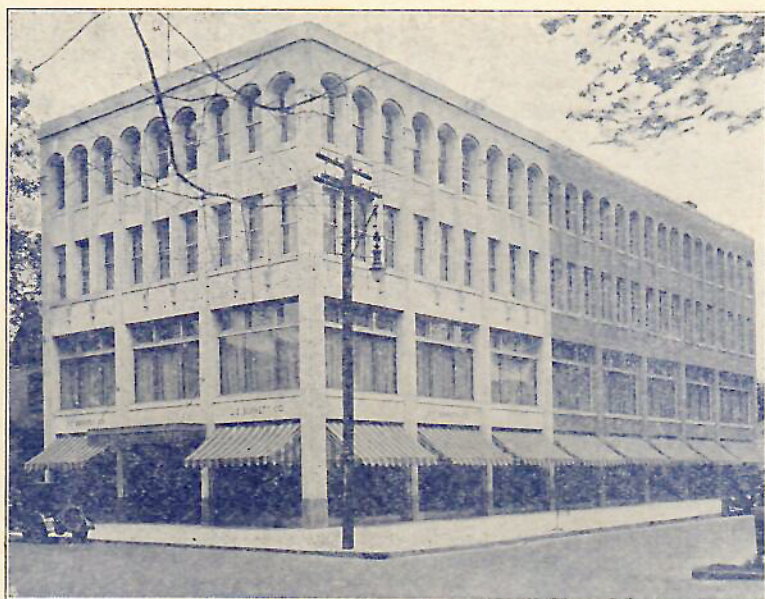
*Care of Sandusky Trust & Savings Bank, Sandusky, Ohio*

---

### **BOARD OF TRUSTEES**

F. W. Roberts, C. Y. C., President  
F. W. Wakefield, V. B. C., Vice President  
Sidney Frohman, S. Y. C.  
Chas. D. Lynch, Secretary-Treasurer, D. Y. C.  
Harry Austin, D. B. C. Y.  
Otto F. Barthel, D. Y. C.  
E. H. Reed, T. Y. C.  
W. J. Billingslea, M. R. Y. C.  
Henry W. Hess, T. Y. C.





*The Largest*  
**Interior Decorating Establishment**  
*in Northwestern Ohio*

has adequate facilities for planning and executing the furniture and furnishings for boats as well as boudoirs—for homes as well as hospitals—for smart shops and impressive offices. Wherever good taste is a social or business asset you will find interiors by Bennett.

*Furniture    Fabrics    Floor Coverings    Pictures    Lamps*

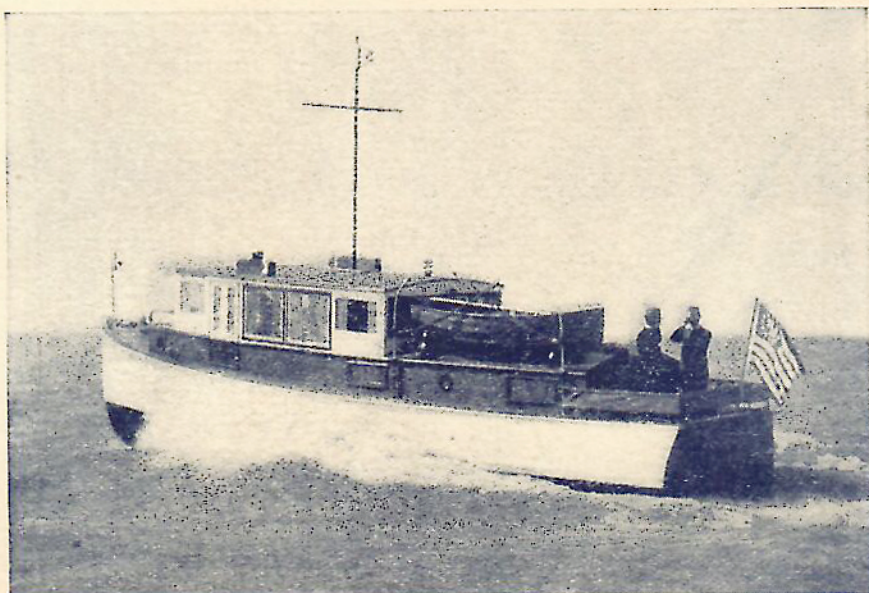
**The J. F. BENNETT STUDIOS, Inc.**  
*Madison at Eighteenth . Toledo, Ohio*



---

# MATTHEWS

## STOCK CRUISERS



Matthews "38" Special (Enclosed) Day Cruiser

WHILE you are at the Regatta, why not run over to Port Clinton? We shall appreciate the opportunity of showing you just how the famous Matthews "38" Stock Cruisers are made—and you will find it, we feel sure, an interesting experience.

THE MATTHEWS COMPANY, PORT CLINTON, OHIO  
*Builders of Boats of Distinction since 1890*

