

*Official Program*

**I ♪ L ♪ Y ♪ A**



**38<sup>th</sup> Annual**  
**REGATTA**  
**PUT-IN-BAY**  
**JULY 12-18, 1931**



## Boating's "Stand-by" Metals— TOBIN BRONZE & EVERDUR

SINCE the first naphtha launch was built in 1885, Tobin Bronze\* shafting has been the overwhelming choice of America's leading boat builders. This is evidenced by the fact that, year in and year out, four out of every five builders exhibiting at the New York show have used Tobin Bronze.

Everdur\*, a new Anaconda metal, has received the acclaim of naval architects and builders as the ideal metal for fastenings and fittings of all types. High strength, excellent corrosion-resistance, ductility, toughness, immunity to sea-son cracking . . . all contribute to the dependability of Everdur.

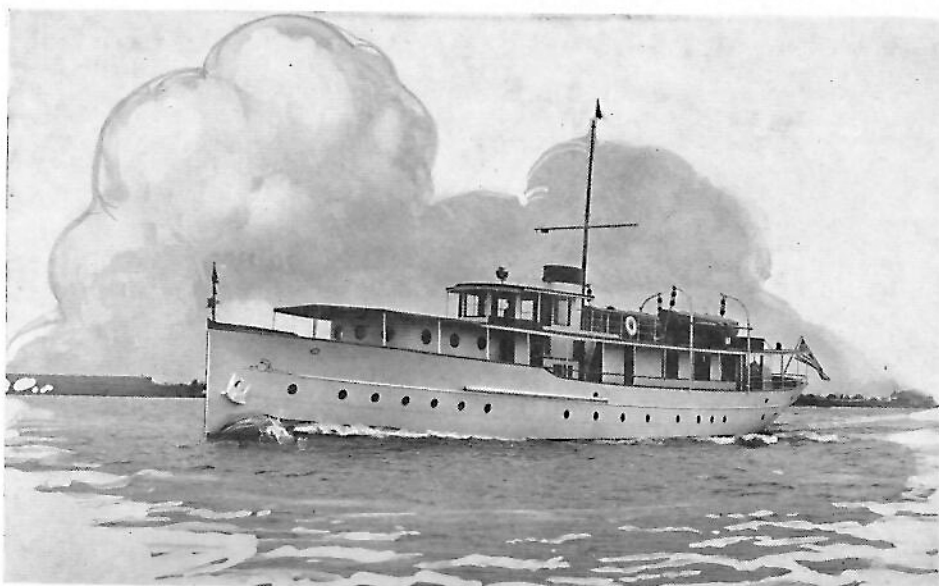
*\*Reg. U. S. Pat. Off.*



THE AMERICAN BRASS COMPANY  
General Offices: WATERBURY, CONN.

FILE NO.	PHOTO DATE
TITLE	
PLACE	HELEN BROOKS
COLLECTION	WLETHS. COLLECTION

## *Defoe-Built Yachts of 1931*



*BER-CLO III, 106' x 17' 6" Steel Yacht for A. S. Close, designed by Cox & Stevens and powered with two 150-H. P. Bessemer Diesels.*

### **Other Defoe-Built Additions to this Season's Pleasure Fleet on the Great Lakes:—**

DANORA, 105' x 19' 6" Steel Yacht for D. S. Eddins, designed by John H. Wells, Inc., and powered with two 200 H. P. Winton Diesels.

ROSEWILL II, 126' x 18' Steel Yacht for W. C. Rands, designed by Cox & Stevens, and powered with two 300 H. P. Winton Diesels.

LENORE, 93' x 16' Wooden Yacht for S. L. Avery, designed by Thos. D. Bowes and powered with two 500 H. P. Winton Diesels.

**DEFOE BOAT & MOTOR WORKS**  
BAY CITY, MICHIGAN

Yachtsmen putting into Vermilion Harbor  
are invited to use the

## Vermilion Lagoons

Those who have not visited this beautiful little harbor since the Lagoons were developed will be pleasantly surprised.

Where once was marsh land you will find a series of Venetian-like canals, six feet deep and wider than the river itself.

We have ample dockage for the yachts of our residents and guests.

Upon the land between these canals is rapidly developing a beautiful residential colony, the equal of which will not be found on any of the Inter-Lake waters. Fine macadam roads, gas, electricity, sewage system, wonderful bathing beach, a Beach Club and a Yacht Club are all features of this development.

We invite you to dock with us, and enjoy the Lagoons and Beach. Our attendants are at your service without charge, to see that your boats are cared for should you choose to stay some time with us, or wish to make the Lagoons your permanent headquarters.

## VERMILION LAGOONS

WE INVITE YOU MOST CORDIALLY TO

**COME TO  
VERMILION**

THAT BEAUTIFUL LITTLE YACHTING RENDEZVOUS  
KNOWN AS "THE HARBOR OF HAPPINESS"



Plan to attend and participate in the 17th Annual

**South Shore Regatta**

August 8th and 9th

*featuring*

STAR CLASS RACES    UNIVERSAL CLASS RACES  
OUTBOARD RACES

INTERESTING AND EXCITING WATER SPORTS  
and the colorful, musical, terpsichorean swirl of beautiful  
girls, gallant sailormen and good-fellow landlubbers—

**THE YACHTSMEN'S DANCE**

Given by V. B. C.



But don't forget that Vermilion is an all-summer playground for those who love to be near the water. Comfortable accommodations by the month, week or weekend. Excellent restaurants. Wonderful bathing beaches. Convenient stores carrying wide selections of merchandise at city-competition prices. Dancing, fishing, canoeing, golfing—no matter what your interest, you will find rest, relaxation, entertainment and a cordial welcome.

The  
**Vermilion Chamber of Commerce**

# Dependable Performance



ONE of the first things motor boat owners look for when they purchase a new boat is dependable performance—especially from the electrical system. They want the battery and the starting, lighting and ignition system to function perfectly under all conditions and at all times. That is why every year more and more experienced boat owners are insisting upon the Auto-Lite electrical system and a USL battery when considering the purchase of a new motor boat.

**USL BATTERIES**  
*Long Life—Dependable Power*

**Auto-Lite**  
*Starting, Lighting & Ignition*

THE ELECTRIC AUTO-LITE COMPANY, TOLEDO, OHIO



## **BUSINESS IS GOOD!**

in the well lighted store and office . . . In the office, more work is done at less cost—in the store, more sales are made—when the light is right.

Let us tell you how *right* light may be applied to your particular business problem—to your greater profit.

**THE F. W. WAKEFIELD BRASS CO.**

VERMILION, OHIO

# Flag Officers of I. L. Y. A.



COM. A. F. WAKEFIELD, V. B. C.  
*Commodore*



**1931**



COM. J. W. VAUGHAN, D. B. C.  
*Vice-Commodore*



COM. C. O. MINIGER, T. Y. C.  
*Rear-Commodore*



A. C. CLOSE, T. Y. C.  
*Fleet Captain*



# Interlake Yachting Association

## Officers, Directors and Delegates for 1931

### Officers

A. F. WAKEFIELD, V. B. C.	Commodore
DR. J. W. VAUGHAN, D. B. C.	Vice-Commodore
C. O. MINIGER, T. Y. C.	Rear-Commodore
A. S. CLOSE, T. Y. C.	Fleet Captain
JOHN HUNTER, V. B. C.	Secretary-Treasurer
CHESTER E. BELL, L. Y. C.	Fleet Surgeon
FRANK R. FREY, T. Y. C.	Librarian
R. A. LUEDTKE, T. Y. C.	Sail Yacht Measurer
FRANK GERDEN, E. Y. C.	Power Yacht Measurer

### Directors Yachtsmen's Fund

Organized 1916

*COM. F. W. WAKEFIELD, <i>Pres.</i> , V. B. C.	
*COM. SIDNEY FROHMAN, <i>Vice-Pres.</i> , S. Y. C.	
COM. LEE B. KELLER, <i>Sec'y</i> , S. Y. C.	
COM. HARRY AUSTIN, D. B. C.	COM. E. H. REED, T. Y. C.
*COM. OTTO BARTHEL, B. Y. C.	W. J. BILLINGSLEA, M. R. Y. C.
COM. HENRY HESS, T. Y. C.	WARREN ROBERTS, C. Y. C.
*Trustee.	

### Delegates

#### American Power Boat Association

COM. A. R. HACKETT, D. Y. C.	COM. JOHN G. ROBINSON, C. Y. C.
COM. CHAS. THORNBURG, S. Y. C.	

#### Amateur Athletic Union

HARRY AUSTIN, D. B. C.

#### Yacht Racing Union of the Great Lakes

DR. C. G. JENNINGS, C. C. D.	COM. OTTO BARTHEL, D. Y. C.
COM. W. A. WILSON, B. V. Y. C.	

#### North American Yacht Racing Union

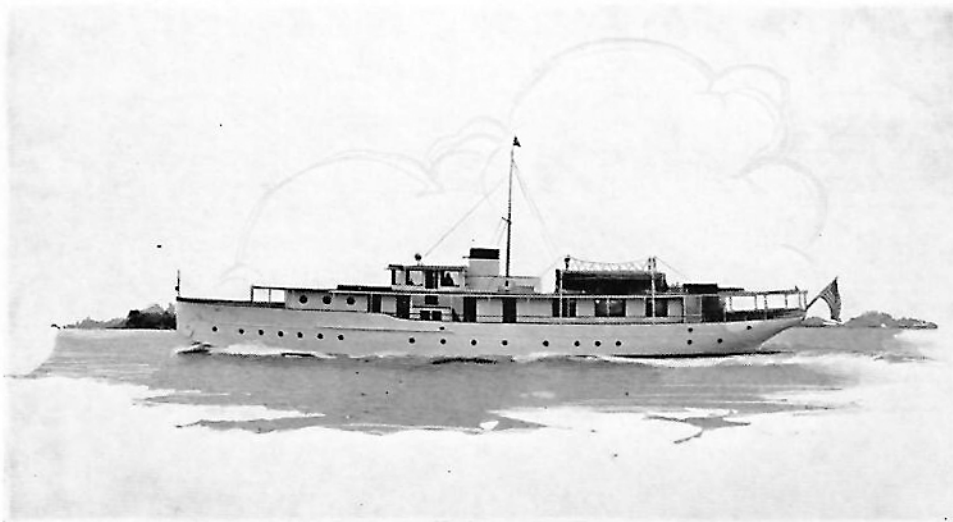
COM. W. A. WILSON, B. V. Y. C.	COM. R. A. LUEDTKE, D. Y. C.
--------------------------------	------------------------------

#### Advisory Committee (I)

COM. E. H. REED, T. Y. C., <i>Chairman</i>	
COM. E. E. NOBLE, C. Y. C.	COM. OTTO BARTHEL, D. Y. C.
COM. HARRY C. KENDALL, D. Y. C.	COM. W. A. WILSON, B. Y. C.
COM. CHAS. THORNBURG, S. Y. C.	COM. F. W. WAKEFIELD, V. B. C.

### Club Membership

BAYVIEW YACHT CLUB OF DETROIT	LAKE SHORE COUNTRY CLUB, ST. CLAIR SHORE, MICH.
BAY VIEW YACHT CLUB OF TOLEDO	LAKESIDE YACHT CLUB, CLEVELAND
BUCKEYE LAKE YACHT CLUB, COLUMBUS	LORAIN YACHT CLUB
BUFFALO CANOE CLUB	MAUMEE RIVER YACHT CLUB, TOLEDO
BUFFALO YACHT CLUB	METROPOLITAN YACHTING ASS'N, CLEVELAND
CHATAU VOYAGEURS, GROSSE ISLE, MICH.	MISS DETROIT POWER BOAT ASS'N, DETROIT
CLEVELAND YACHTING CLUB	MONROE YACHT CLUB
CORINTHIAN YACHT CLUB, DETROIT	OTTAWA RIVER YACHT CLUB, TOLEDO
DETROIT BOAT CLUB YACHTSMEN	PORT CLINTON YACHT CLUB
DETROIT OUTBOARD ASSOCIATION	PUT-IN-BAY YACHT CLUB
DETROIT YACHT CLUB	RIVERSIDE BOAT CLUB, TOLEDO
EDGEWATER YACHT CLUB, CLEVELAND	SAGINAW BAY YACHT CLUB, BAY CITY, MICH.
ED'SON BOAT CLUB, DETROIT	SANDUSKY YACHT CLUB
ERIE YACHT CLUB	SARNIA YACHT CLUB, ONTARIO, CANADA
GROSSE POINTE YACHT CLUB, DETROIT	TOLEDO YACHT CLUB
VERMILION BOAT CLUB	



Flagship of Commodore A. F. Wakefield, Put-in-Bay Regatta, 1931.  
"Berclo III", owned by Mr. A. S. Close, T. Y. C.

## ▼ ▼ **General Information** ▼ ▼



HEADQUARTERS: Put-In-Bay Yacht Clubhouse

*Headquarters Open: 7:30 A. M. to 6 P. M.*

All yachtsmen and their ladies must register. *It is requested that reservations for the Ladies' Bridge Lawn Party be made at time of registration. See below.*

All yachtsmen of the Inter-Lake and invited clubs, whether yacht owners or not, are invited and urged to participate in all of the events of the week and have their ladies participate wherever possible, to make the week successful in every way.

Obtain entry blanks, racing numbers and racing information at Headquarters.

Every yacht should be measured by the measurer of its home club and measurer's signature should be on entry blank.

Sign your entry and state clearly all answers to questions.

No entry fee will be charged in any event.

Get your entry in early to assist the committees.

Two or more entries must be received or an event will be cancelled.

Prizes in any event will be awarded according to number of entries. If two entries, only one prize will be awarded; if three entries, two prizes, etc.

Postponements, changes in courses or events, results and all official announcements will be posted on the Bulletin Board at Headquarters. Watch it!

All events of the Regatta will be started promptly on time. Be on your mark!

The official time used at meet will be Put-In-Bay Yacht Club time, according to clock at Headquarters.

Tickets for the Banquet and Yachtsmen's Ball on sale at Headquarters. Get yours at once—only a limited number.

On account of the confusion in connection with the Ladies' Lawn Party, this year only those ladies who have made table reservations by registering at Headquarters on Monday or Tuesday will be eligible. Fifty tables of bridge will be provided with table prizes.

The Roman numerals shown on the general program indicate the committee in charge of each event.

# ▼ ▼ ▼ ▼ Official Program ▼ ▼ ▼ ▼

Watch the bulletin board daily for further information.

See the rules on the following pages.

Roman numerals in Program indicate Committee Chairmen in Control.

## SUNDAY, JULY 12

- Morning:** Long distance sail yacht race, Bob Lo Island to Put-in-Bay. Long distance sail yacht race, Toledo Yacht Club to Put-in-Bay. Winton long distance race, Rocky River to Put-in-Bay. Star class race, Vermilion to Put-in-Bay.
- Afternoon:** Registration at headquarters, Put-in-Bay Yacht Clubhouse.
- Evening:** Services at St. Paul's Church.

## MONDAY, JULY 13

- Morning:** 9:00 A. M. Organization breakfast at Bay View Hotel. All flag officers and committee chairmen are expected to be there promptly.  
10:30 A. M. Field games for men and women. Outdoor sports at the Drill Grounds. (XV).  
11:00 A. M. Start of play for golf tournament. (XVIII).
- Afternoon:** 1:30 P. M. Special handicap race for yachts of 21 foot rating and over, intended primarily for Mackinac Race entries. (VIII).  
4:30 P. M. Open house aboard the Flagship "Berclø III" to which all registered yachtsmen and ladies are invited. (II).
- Evening:** 7:00 P. M. *sharp*. Yachtsmen's Dinner and All-Star Girl Revue. Bring the ladies and don't be late. Tickets, \$2.50. (IX).

## TUESDAY, JULY 14, "OLEIDA DAY"

- Morning:** 8:30 A. M. Sail yacht races, including all classes. (VIII).
- Afternoon:** 2:00 P. M. Power boat races, including all classes. See rules for new classifications. (V).  
2:00 P. M. Swimming and diving events at City Dock. Point scoring used in match event between Detroit and Cleveland. (XIV).  
4:30 P. M. Open outboard races. (XIII).
- Evening:** 8:30 P. M. Oleida Day parade—brass bands, red fire and whoopee. (X).  
9:30 P. M. Masquerade ball at the Colonial Pavilion. Secure costumes at Hotel Crescent. Tickets, 50 cents. (X).

## WEDNESDAY, JULY 15

- Morning:** 8:30 A. M. Sail yacht races, including all classes. (VIII).  
9:30 A. M. Open outboard races. (XIII).
- Afternoon:** 2:00 P. M. Power boat races, including all classes. (V).  
2:00 P. M. Lawn Party at Bayview Hotel for ladies who have made table reservations previously. (XII).  
3:30 P. M. Golf tournament. (XVIII).
- Evening:** 8:30 P. M. Commodore's Reception and sunset ride aboard Str. "Chippewa." (II).  
10:00 P. M. Collegiate party at Bayview Hotel. (XIX).

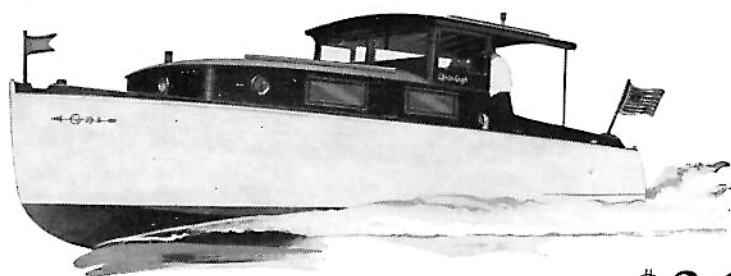
## THURSDAY, JULY 16

- Morning:** 9:00 A. M. Power boat races, including all classes. (V).  
10:00 A. M. Indoor-outdoor baseball game between Associated Yacht Clubs of Toledo and the Detroit River Yachting Association. (XV).  
11:00 A. M. Inspection of airplanes at Put-in-Bay Airport. (XX).
- Afternoon:** 2:30 P. M. Squadron sail with air escort. (XXIII).  
2:30 P. M. Aviation program climax, including trophy for stunting. (XX).  
4:00 P. M. Memorial services at Perry's Monument. (XXI).  
5:00 P. M. Sea Scout demonstration. (XXI).
- Evening:** 9:00 P. M. Yachtsmen's Ball at Colonial Pavilion. Tickets, \$2.00 per couple. (X).

## FRIDAY, JULY 17

- Morning:** 8:30 A. M. Sail yacht races, including all classes. (VI).  
10:00 A. M. Mixed foursome in the golf tournament. (XVIII).
- Afternoon:** 2:00 P. M. Race of life boats from Strs. "Chippewa," "Put-in-Bay," "Erie Isle," "Greyhound," "Goodtime" and U. S. C. G. Cutter "Seminole."  
1:00 P. M. Water games, including obstacle outboard event. (XV).  
3:00 P. M. Commodores' catboat race. (XV).  
4:00 P. M. Ladies' catboat race. (XV).  
All of above afternoon events at City Dock.
- Evening:** 8:00 P. M. Distribution of prizes at Hotel Crescent. (XI).

Others may match  
this PRICE . . .



\$3975  
31-foot family cruiser

*but not with*

*Chris-Craft Quality*

Wherever they have been shown, Chris-Craft's new family cruisers have scored a triumph. And justly—for we believe these to be the lowest priced *quality* boats of their type that can be built, and the outstanding values of this or any other year.

The 31-footer shown above—priced at only \$3975—is one of twelve models, in 31- and 36-foot lengths, which offer a wide selection as to cabin arrangement, speed, power and equipment.

All have the famous Chris-Craft V-type hull of the finest Philippine hardwood, and the double planked bottom that never needs caulking. They are remarkably free from roll and pound—fast and comfortable, staunch, seaworthy, dependable boats of surprising capacity and living comfort.

We invite you to see them, drive them, and compare them, point for point with *any* cruisers at or near their cost. Our liberal finance plan allows you to purchase out of income

CHRIS-CRAFT CORPORATION—DETROIT ROAD, ALGONAC, MICHIGAN  
NEW YORK DIRECT FACTORY BRANCH—1 WEST 52ND ST., AT 5TH AVENUE

▼ ▼ ▼ **Past Commodores** ▼ ▼ ▼



*GEO. W. GARDNER, C. Y. C. ....1894	*GEO. H. WORTHINGTON, C. Y. C. .... 1913
*JOHN E. GUNCKEL, T. Y. C. ....1895	HENRY W. HESS, T. Y. C. ....1914
*GEO. H. WORTHINGTON, C. Y. C. ....1896	HARRY C. KENDALL, D. Y. C. ....1915
*S. O. RICHARDSON, JR., T. Y. C. ....1897	EMIL G. SCHMIDT, S. Y. C. ....1916
ALEX I. McLEOD, D. Y. C. ....1898	ALEXANDER WINTON, C. Y. C. ....1917
*GEO. T. BLISS, E. Y. C. ....1899	*WM. R. HUNTINGTON, S. Y. C. ....1918
GEO. F. ANDERSON, S. Y. C. ....1900	R. GEORGE MARSH, G. P. Y. C. ....1919
*WM. R. HUNTINGTON, S. Y. C. ....1901	F. W. WAKEFIELD, V. B. C. ....1920
*C. C. WARREN, S. Y. C. ....1902	*F. W. ROBERTS, C. Y. C. ....1921
*HENRY TRACY, T. Y. C. ....1903	C. W. KOTCHER, D. Y. C. ....1922
JOHN H. SMEDLEY, D. B. C. Y. ....1904	SIDNEY FROHMAN, S. Y. C. ....1923
*GEO. H. WORTHINGTON, C. Y. C. ....1905	OTTO F. BARTHEL, D. Y. C. ....1924
JOHN F. CRAIG, T. Y. C. ....1906	*THOS. A. DEVILBISS, T. Y. C. ....1925
*FRANK W. FLETCHER, T. B. Y. A. ....1907	A. A. SCHANTZ, D. Y. C. ....1926
*GEO. H. WORTHINGTON, C. Y. C. ....1908	DR. W. A. WILSON, B. Y. C. ....1927
*S. O. RICHARDSON, JR., T. Y. C. ....1909	E. H. REED, T. Y. C. ....1928
C. G. JENNINGS, C. C. of D. ....1910	MARK R. HANNA, D. Y. C. ....1929
ALEXANDER WINTON, L. Y. C. ....1911	E. E. NOBLE, C. Y. C. ....1930
*WM. R. HUNTINGTON, S. Y. C. ....1912	

\*Deceased.

**I. L. Y. A.**

DEDICATE TUESDAY, JULY 14TH, AS

*Oleida Day*

EXTENDING A CORDIAL INVITATION TO

**Ohio Lake Erie Island District Association**

to come to Put-in-Bay and enjoy the program especially prepared for their enjoyment.

SAIL BOAT      SPEED BOAT      OUTBOARD  
RACING

SWIMMING      DIVING      STUNTS      MARDI GRAS

53 YEARS  
SAILMAKERS  
and  
RIGGERS

*Flags*

*Pennants*

*Burpees*

*Cushions*

*Canvas Covers*

*Awnings*



Woodbridge at Bates  
Detroit, Mich.

...TROPHIES...  
PRIZES . . GIFTS

To the Winner—the Prize. Long after the contest is forgotten the victor will cherish the trophy. That it may be worthy of the event we have a complete selection in a wide range of design and price for every branch of sport.



C. J. LYNCH, C. P. A.  
GEORGE L. WALTON, C. P. A.

C. J. LYNCH & CO.

*Certified  
Public  
Accountants*

3214 Eaton Tower  
DETROIT, MICH.

# ▼ ▼ ▼ Sail Yacht Program ▼ ▼ ▼

## Sail Yacht Rules Committee (VI)

COM. CHALMERS BURN, C. Y. C., *Chairman*

PAUL ANDERSON, C. Y. C.      COM. HARRY FREEMAN, B. L. Y. C.      F. B. FARNSWORTH, D. Y. C.

## Sail Yacht Judge Committee (VII)

COM. C. B. LOCKWOOD, S. Y. C., *Honorary Chairman*

COM. HARRY C. KENDALL, D. Y. C., *Chairman*

COM. OTTO F. BARTHEL, D. Y. C.

COM. F. W. WAKEFIELD, V. B. C.

A. B. HEAVENRICH, D. Y. C.

H. F. EGNER, T. Y. C.

TRUMAN S. FOOTE, V. B. C.

E. F. WALBRIDGE, M. R. Y. C.

THOMAS McCANN, S. Y. C.

## Sail Yacht Race Committee (VIII)

RALPH W. WALTON, V. B. C., *Chairman*

COM. A. J. COPELAND, V. B. C.

COM. C. R. HARVEY, C. Y. C.

WM. A. MYERS, C. Y. C.

COM. GEO. NAEGLER, V. B. C.

RAY M. SMITH, V. B. C.

COM. CHALMERS BURN, C. Y. C.

## Classifications

Universal Class  
 A—Division Rating 25 ft. and under  
 B—Division Rating over 25 ft.  
 R—Sloops.  
 K—15 ft. Cats (Private Owned)  
 CK—15 ft. Cats (Club Owned)  
 CK—Free for all.

S—Star Class (High Rig)  
 S—Star Class (Low Rig)  
 Y—Yawls (A—Division Rating 25 ft. and under.  
                   B—Division Rating over 25 ft.)  
 SCH—Schooners and ketches.  
 22 Sq. M.—22 Square Meter.  
 \*Port Huron-Mackinac entries.

Monday and Tuesday a special two day series will be held for Yachts entered in the Port Huron-Mackinac race. These races are marked thus \*.

## STARTING TIME—SAIL YACHTS

### Monday\*, Tuesday\*, Wednesday and Friday

MONDAY—Warning Gun ..... 1:30 P. M.  
 Preparatory Gun ..... 1:55 P. M.  
 \*Starting Gun Pt. Huron-Mackinac Entries..... 2:00 P. M. Long Course

### The following is the Schedule for Tuesday, Wednesday and Friday

Warning Gun ..... 8:30 A. M.  
 Preparatory Gun ..... 8:55 A. M.  
 Start Class "R" ..... 9:00 A. M. Long Course  
 Start Class "2 Sq. M." ..... 9:05 A. M. Long Course  
 Start Class "A" Both A and B Classes..... 9:10 A. M. Long Course  
 Start Class "Y" Both A and B Classes..... 9:15 A. M. Long Course  
 Start Class "SCH" ..... 9:20 A. M. Long Course  
 Start Class \*Pt. Huron-Mackinac Entries..... 9:25 A. M. Long Course  
 Start Class "S" (High Rig) ..... 9:30 A. M. Short Course  
 Start Class "S" (Low Rig) ..... 9:35 A. M. Short Course  
 Start Class "K" ..... 9:40 A. M. Short Course  
 Start Class "CK" ..... 9:45 A. M. Short Course  
 Start Class "CK Free for All"..... 9:50 A. M. Short Course

NOTE: Class marked thus \* does not race Wednesday and Friday, but the race schedule and time remains as shown.

Races for special classes not listed above will be provided by the Sail Yacht Regatta Committee upon request of three or more owners of such boats if in the judgment of the Committee such action is advisable.

All Races run under Y. R. U. and I. L. Y. A. Rules.

*"Jim's Place is a Good Place to Eat"*

## **PUT-IN-BAY CAFETERIA**

LUNCH COUNTER IN CONNECTION  
LUNCHES AT ALL HOURS

JAMES A. POULOS, *Prop.*

PUT-IN-BAY, OHIO

Call on "T. B." at the

## **CRESCENT HOTEL**

Featuring MEALS and a Good Home Away from Home  
*Service at All Hours*

T. B. ALEXANDER, *Proprietor*

PUT-IN-BAY, OHIO

When you put in at the Bay go to

## **SCHNOOR & FUCHS**

For your general merchandise, groceries, meats, fruits and vegetables in season.  
Fresh milk and cream. Tennis shoes, hardware and boat supplies

## **THE PUT-IN-BAY IMPROVEMENT COMPANY**

*Operating*

THE COLONIAL DANCE HALL

7-piece Orchestra and Entertainers—9 Bowling Alleys—Lunches—Soft Drinks

THE COLONIAL BATHING BEACH

Ideal Bathing Spot

Courtesy plus Hospitality

FRANK BOLE, *Manager*

Cottages for Rent

## **MILLER'S BOAT LIVERY**

LAUNCHES — ROW BOATS

We Will Take You Anywhere—Any Time

Phone 42-W  
PUT-IN-BAY, OHIO

*{Retail Ice}*

## **BAY VIEW HOUSE**

Where Good Food and Good People Meet

Tea Room and Grill

J. J. DAY, *Proprietor*

*Special Noon Day Luncheon*

## **HOTEL COMMODORE**

American or European Plan

Mrs. Susie Sands

## **SMITH HOTEL**

*Under New Management*

"Make it your home at Put-in-Bay"—W. S. Smith

DINNER 75c and \$1.00

PLATE LUNCH 50c



# Racing Rules for Sail Yachts

Certificate of measurement must be filed with entry. The Sail Yacht Regatta Committee reserves the right to order any yacht entered re-measured.

Races for all classes, starting five minutes apart on Tuesday, Wednesday and Friday mornings; starting first class at 9:00 a. m.

All races under Y. R. U. and I. L. Y. A. Rules, as amended to date.

In Class C. K. championship flag goes to skipper making highest percentage, cup to club having highest percentage with three boats.

Entries for all races must be made with Sail Yacht Regatta Committee at headquarters for 6 p. m., Monday, July 13th, unless competing yacht arrives too late to enter before this time.

Alterations of the race program or sailing course may be made at the discretion of the Sail Yacht Regatta Committee. Such changes will be posted on Bulletin Board.

Numbers must be carried by each yacht on each side of its mainsail. These numbers can be supplied by the Sail Yacht Regatta Committee at Headquarters.

No person other than the Judges, Regatta Committee and Clerks will be allowed on Judges' boat without the consent of the Chairman of the Sail Yacht Regatta Committee.

All stakes to be left to port unless changed by Regatta Committee. If the Regatta Committee decides to reverse the course and have stakes left to starboard, a green flag will be flown from judges' boat. Red flag will mean all stakes to port. The judges' boat will fly a white flog with blue letters R. C.

Guns must not be fired from any yacht within one hour of the time of starting races, and not until after every yacht has crossed the finish line.

All vessels following the races must keep to leeward, and at such distance as not to interfere with the maneuvers of the competing yachts.

The races are open to every yacht which complies with the rules and which is regularly enrolled in any club in the Inter-Lake Yachting Association, Y. R. U., or which has been invited to participate in the races.

All boats sailing the long course will have four hours' time limit.

All boats sailing the short course will have three hours' time limit.

## TIME ALLOWANCES

Time allowance will be computed on yachts in Classes Universal and Yawl, under the formula and table of the Yacht Racing Union, 1931 Rules.

## WATCH BULLETIN BOARD

There will be a Bulletin Board at Headquarters where changes in program and special instructions will be posted throughout the week.

All yachts whose preparatory gun has not been fired must keep clear of starting line. Any yacht willfully violating this rule will be disqualified.

## ▼ ▼ ▼ ▼ Sailing Courses ▼ ▼ ▼ ▼

The course for all series races for sailing yachts in Universal Class, Classes R, Y and 22 Sq. meters will be triangular starting from a line between a flag buoy off the east end of Gibraltar Island and a similar flag buoy in line with the west end of Middle Bass, to and around a stake three nautical miles, N. N. W., thence to and around a stake three nautical miles S. W. three-quarters S., thence to and around a stake three nautical miles E. one-half S. to and across starting line between starting stakes. In finishing yachts must cross the starting line in the opposite direction from which they start. All stakes must be left to port, unless otherwise ordered by the Sail Yacht Regatta Committee as heretofore provided.

The course for Classes Star, K and CK, starting from the same line, will be a shorter triangle with the same compass courses, but with one and one-half miles to the side, or a total of four and one-half nautical miles.

Class Star: Rules of the Star Class Yacht Racing Association to govern.



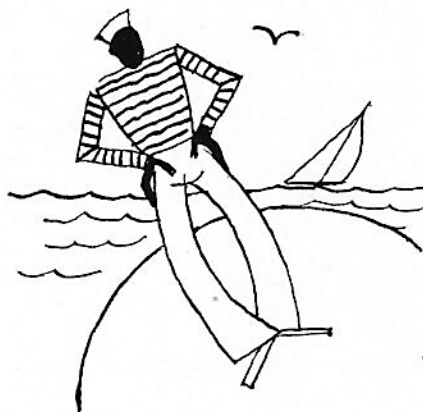
### ACKNOWLEDGEMENT

The Officers and Committeemen upon whom the responsibility for this Regatta has rested, desire to thank Inter-Lake's many friends for their unselfish and enthusiastic co-operation.

Every member of the Inter-Lake Yachting Association owes a practical debt of gratitude to those who have so generously contributed to the success of the 38th Annual Regatta with trophies, merchandise prizes and advertising in this program. In fairness we can do no less than reciprocate for these favors by patronizing those who have supported us.

JOHN A. HUNTER, *Secretary.*

## ALWAYS IN SHIP SHAPE~



**MEN!!** Your suits are always ready to wear no matter how rough the weather if you sail with a "TOURISTER" Hold the Shape and Form Hanger.

*Dupont \$1.95 Linen \$2.95 Leather \$4.95*

**THE LIKLY & ROCKETT TRUNK CO.**  
1365 Euclid Ave. Cleveland, Ohio

Air-tight Wardrobes, cedar lined, built to order to fit any compartment in your boat. Write for information.

## "TOURISTER"

Trade Mark Reg. U. S. Pat. Office



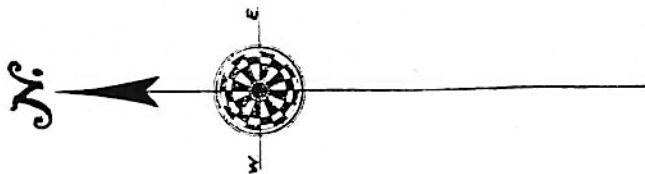
The Form perfectly holds a coat, vest, trousers—its folding action stretches the suit to a pressed condition.



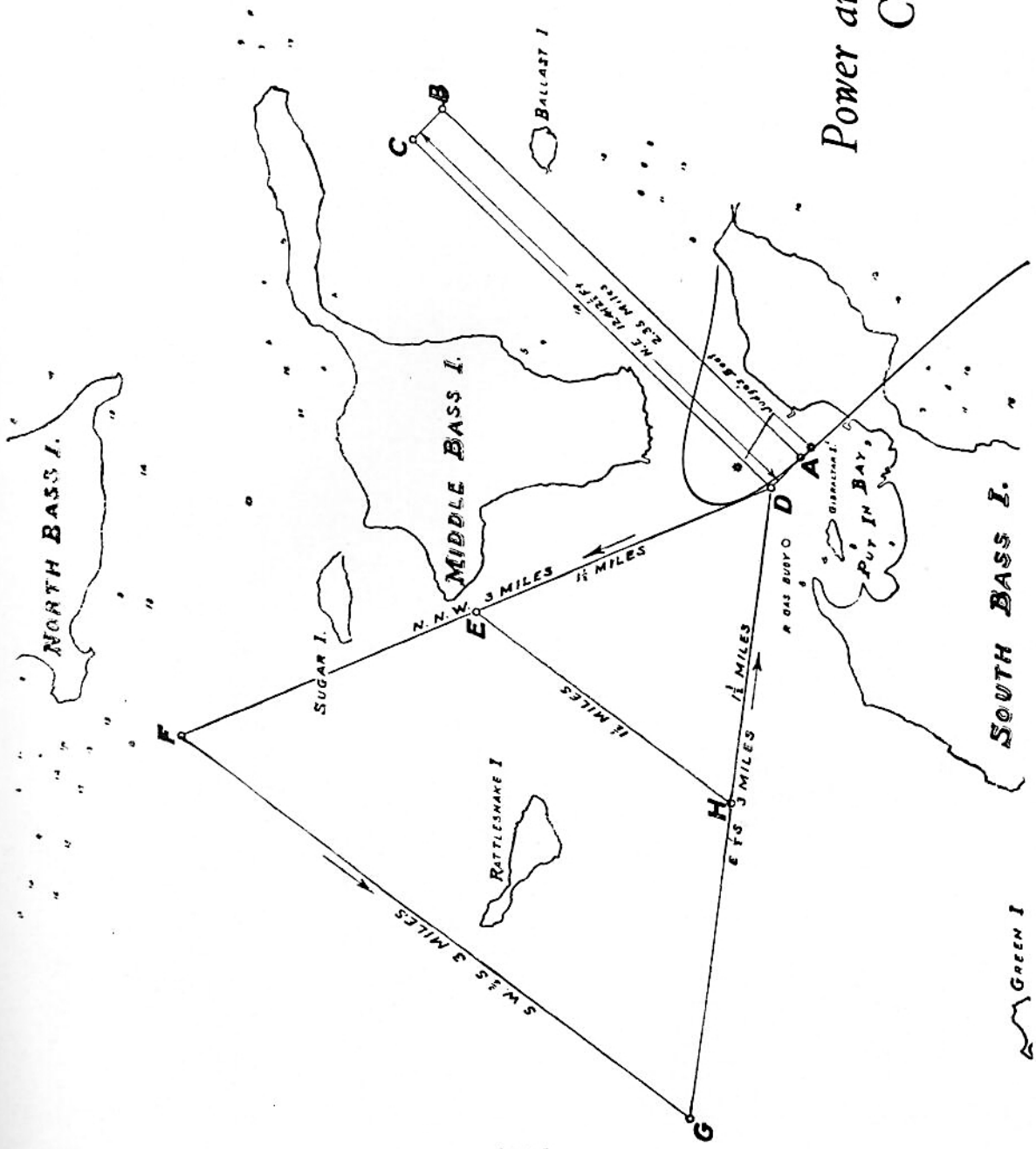
Place suit on form as you would on an ordinary hanger — it fits in a drawer, in luggage — always ready to wear.

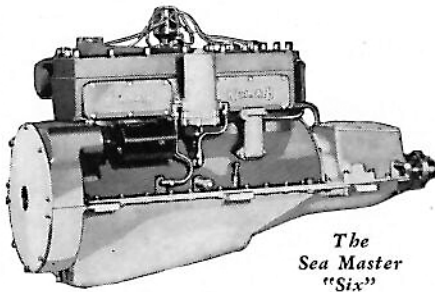


Fold sleeves at the back, fold coat once—it remains unwrinkled.



# Power and Sail Boat Courses





*The  
Sea Master  
"Six"*

A 40 to 85 H. P. 267 cubic inch motor for speeds from 1000 to 3000 R.P.M. With and without reduction gear.

**POWER**  
*for the*  
**Outspoken Demands  
Of Marine Usage**

**T**HE discerning buyer of a marine motor places quality before price—balanced design and engineering integrity before glib statements. As a dealer or representative it becomes doubly necessary to protect yourself by recommending a marine engine of unquestioned superiority—one with a reputation back of it for just and fair dealing. Such an engine is the Kermath—built in a variety of two, four, six and twelve cylinder sizes to match every need of boat speeds and economical power.

**KERMATH MFG. COMPANY**  
**DETROIT**

**KERMATH**

**Hill-Manning Boat  
Corp.**

**Tonawanda Island  
N. Tonawanda, N. Y.**

**At the Western Terminus  
of the Barge Canal**

**TWENTY FOUR HOUR  
SERVICE OF EVERY  
KIND FOR YACHTSMEN**

*Ask for Our Winter Storage  
Rates*

**Yachtsmen!  
Fair Ladies!  
All Others!**



. . . Tell Your FAVORITE GARAGE or REPAIRMAN about DALL PISTONS, CYLINDER SLEEVES, and SHOP EQUIPMENT!

. . . He'll appreciate it—and so will YOU—providing He uses 'em when putting YOUR MOTOR in A-1 shape!

. . . INSIST ON IT—and you certainly will not go wrong!

**THE  
DALL MOTOR PARTS CO.**  
Manufacturers  
P. O. Station D  
CLEVELAND, OHIO

# ▼ ▼ ▼ Power Boat Program ▼ ▼ ▼

## Power Boat Rules Committee (III)

FRANK J. GERDON, L. Y. C., *Chairman*

ED. N. LITTIN, T. Y. C.

COM. C. B. SOLDERS, E. Y. C.

COM. ORA B. COOK, L. Y. C.

COM. OTTO BARTHEL, D. Y. C.

W. D. EDENBURN, D. Y. C.

## Power Boat Judges Committee (IV)

COM. J. E. TROMBLEY, L. Y. C., *Chairman*

EARL SHANTEAU, O. R. Y. C.

HARRY WHEAL, V. B. C.

L. F. R. BELLOWES, D. Y. C.

RALPH PETTIT, C. Y. C.

COM. C. B. SOLDERS, E. Y. C.

FRED DUSENDON, L. Y. C.

## Power Boat Race Committee (V)

COM. JOHN TALLMAN, T. Y. C., *Chairman*

COM. CLAUDE LYTLE, M. R. Y. C.

LOUIS P. EHRLICK, T. Y. C.

COM. JULIUS MORGAN, B. V. Y. C.

MILTON GALLUP, C. Y. C.

COM. JOHN W. FRASER, T. Y. C.

COM. A. R. HACKETT, D. Y. C.

COM. CHAS. THORNBURG, S. Y. C.

## Classifications

<i>Division</i>	<i>Type</i>	
1	Cruisers, 10 knots	(Not over 11.5 miles per hour)
2	Fast Cruisers, 10 to 14 knots	(Not over 16 miles per hour)
3	Speed Cruisers, 14 to 18 knots	(Not over 20.75 miles per hour)
4	Express Cruisers, 18 to 24 knots	(Not over 27.5 miles per hour)
	Speed Boats—Privately owned	
	Manufacturers, dealers and their representatives cannot enter.	
	125 H. P. and under.	
	150 H. P. and under	
	250 H. P. and under—open to all.	

**Tuesday, July 14**

**Preparatory Gun 1:30 P. M.**

<i>Division</i>	<i>Type</i>	<i>Distance</i>	<i>Type of Boat</i>
1	2:00	10 Knots.....	Cruiser
2	2:20	10 Knots.....	Fast Cruiser
3	2:30	10 Knots.....	Speed Cruiser
4	2:40	10 Knots.....	Express Cruiser
125 H. P.	3:10	20 Knots.....	Displacement Racer
150 H. P.	3:20	20 Knots.....	Displacement Racer
250 H. P.	3:30	20 Knots.....	Displacement Racer

**Wednesday, July 15**

Same as July 14

**Thursday, July 16**

**Preparatory Gun 8:30 A. M.**

<i>Division</i>	<i>Type</i>	<i>Distance</i>	<i>Type of Boat</i>
1	9:00	10 Knots.....	Cruiser
2	9:20	10 Knots.....	Fast Cruiser
3	9:30	10 Knots.....	Speed Cruiser
4	9:40	10 Knots.....	Express Cruiser
125 H. P.	10:10	20 Knots.....	Displacement Racer
150 H. P.	10:20	20 Knots.....	Displacement Racer
250 H. P.	10:30	20 Knots.....	Displacement Racer

## See This Hand!

WHEN it comes to a show-down, the Richardson is a royal flush of cruiser value—

A 30 foot Single Cabin Cruisabout with cabin comforts for four, for \$3558.

A 30 foot Day Cruisabout with 22 miles speed, for \$3685.

A 30 foot Double Cabin Cruisabout with six berths for \$4185.

A 30 foot Double Cockpit Cruisabout with Gray Vee Drive for \$4385.

A 24 foot "Baby" Richardson fitted for four and priced at \$2400.

Inside and out every Richardson is as beautifully finished as yachts selling for thousands of dollars more than the highest Richardson price. Back of the paint and varnish are staunch, quality materials, and construction and the Richardson reputation that means more than a generation of service.

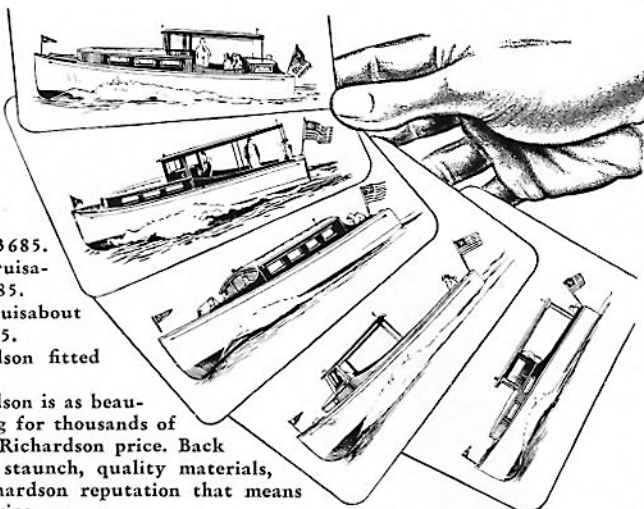
Many of the new models are being shown by the boys listed here. Be sure to inspect these low priced Richardsons or write for a complimentary copy of Cruisabout booklet Z-1.

**RICHARDSON BOAT COMPANY, INC.**

651 SWEENEY STREET

NORTH TONAWANDA, N. Y.

# Richardson Cruisabouts



OUTBOARD MOTORS      MARINE HARDWARE

YACHT SUPPLIES

HENRY H. SMITH & Co.

*"Everything for Boats"*

334 East Jefferson  
DETROIT

PROPELLORS      REVERSE GEARS



## A MESSAGE TO YACHTSMEN!

YOU think pretty well of that boat of your's don't you? She's done a lot for you—your health, your peace of mind. Now is the time to show your appreciation—present her with a LYMAN Clinkerbilt speed tender! Built in sizes 8, 9, 10 and 11 feet, the value of a LYMAN tender is demonstrated by its performance, dependability, long life and genuine usefulness. Our 17 foot inboard runabouts are likewise ideal in a tender capacity for large yachts. Send for catalogs.

*A complete line of speed tenders, outboard sea skiffs and runabouts, and inboard runabouts.*

**LYMAN BOAT WORKS**

1527 First St. SANDUSKY, OHIO

# Power Boat Racing Rules



1. Entries for all Power Boat races must be filed at Inter-Lake Yachting Association headquarters before July 13, 1931, at 6:00 P. M.
2. All boats in Divisions 1, 2, 3 and 4 shall be measured by an accredited measurer of the A. P. B. A., their home club measurer, or the Inter-Lake Yachting Association power boat measurer. Boats not measured before their arrival at Put-In-Bay shall be reported at Inter-Lake headquarters. The owner's name, boat's name, measuring fee, and anchorage shall be given to the secretary, so that the measurer can locate the boat readily.
3. Certificates of measurement must be filed with entries and the Regatta Committee reserves the right to remeasure at its option.
4. Races for each class shall consist of three heats.  
 First heat. A. P. B. A. handicap racing rules or declared time with 5% leeway and penalty as provided in said rules.  
 Second Heat. Handicapped according to time of first heat. Any boat finishing ahead of actual elapsed time of first heat in excess of 5% to be penalized double the amount of excess over 5% in figuring the corrected time for second heat.  
 Third Heat. Handicapped according to the best elapsed time of the two previous heats. Any boat finishing ahead of best elapsed time of two previous heats to be penalized double the amount of time over the 5% allowable excess in figuring the corrected time for third heat.  
 The second and third heats will be a handicap race with the limit boat starting first.
5. All boats in a class in the first heat will start at the same time and handicaps allowed by allowing time against the corrected time.
6. Points for finish position will be awarded according to the Rule XXIX of the A. P. B. A. as follows:
 

First boat to finish	400 Points
Second boat to finish	361 Points
Third boat to finish	324 Points
Fourth boat to finish	289 Points
Fifth boat to finish	256 Points
Sixth boat to finish	225 Points
Seventh boat to finish	196 Points
Eighth boat to finish	189 Points
Ninth boat to finish	144 points
Tenth boat to finish	121 Points
Eleventh boat to finish	100 Points
Twelfth boat to finish	81 points
7. The Committee reserves the right to require a minimum of three boats to constitute a race.
8. The boat making the most points in the three scheduled heats will be declared the winner unless, of course, it has been disqualified for infraction of rules.
9. Starting times for all handicapped boats will be posted at headquarters before the race.
10. In general the racing rules of the A. P. B. A. will hold.
11. Summary: These rules have been drawn up, and their sole intent is to minimize as much as possible all differences in boat speeds, and to make seamanship and consistent performance the deciding factors.

The  
Progress  
Paint  
Co.

8001 FRANKLIN AVE.  
CLEVELAND

You Will Find A  
**SANDUSKY  
SEA SKIFF**  
at Put-in-Bay

*Ask for a demonstration*

BUILDERS OF HIGH GRADE  
PLEASURE CRAFT

**Sandusky Boat  
Works**

Foot of Washington St.  
SANDUSKY, OHIO



**All Ship-Shape  
when you Put-In  
to PUT-IN-BAY**

Spick and span, fore and aft—wood and metal work brightly shining as the foam on your wake!  
And all so easy and quick, with this strictly modern product. Saves time, labor and space—now a widely popular method for keeping things "ship-shape."



*The* **WONDER PAPER**



Yes, Paper! A fine, soft, raggy paper of the latest scientific development. Permeated with a high grade cleaning and polishing wax, ready for instant use. Compact, convenient, handy; just tear off a wad from the roll and rub over any surface. No dirt-filled rags, no messy clutter—it dusts, cleans, polishes and protects—all at once.

Buy from your favorite dealer or use postpaid card enclosed. See how quick and easy it is to keep your boat shipshape.

**KALAMAZOO VEGETABLE PARCHMENT  
COMPANY**

KALAMAZOO - MICHIGAN

ANOTHER **KVP** PRODUCT

*Ask Al Wakefield how it works—*



# ▲ ▲ ▲ **Outboard Program** ▲ ▲ ▲

## Outboard Committee (XIII)

COM. A. R. HACKETT, D. Y. C., *Chairman*

L. J. BECKERT, O. R. Y. C.  
 KARL BATES, S. Y. C.  
 WM. LYMAN, S. Y. C.

COM. ALEX. ROSS, M. R. Y. C.  
 MR. LITTLE, O. R. Y. C.  
 COM. JOHN G. ROBINSON, C. Y. C.

### Tuesday, July 14

<i>Time</i>	<i>Motor</i>	<i>Division</i>	<i>Types of Boats</i>
4:30	B		Hydroplanes
5:00	B		Displacements
5:30	C		Hydroplanes
6:00	C		Displacements
6:30	Unlimited		Hydroplanes
7:00	Unlimited		Displacements

### Wednesday, July 15

<i>Time</i>	<i>Motor</i>	<i>Division</i>	<i>Types of Boats</i>	1st	2nd	3rd
9:30	B		Hydroplanes	Trophy or \$25.00	Mdse or \$15.00	Mdse or \$10.00
10:00	B		Displacements	Trophy or \$25.00	Mdse or \$15.00	Mdse or \$10.00
10:30	C		Hydroplanes	Trophy or \$25.00	Mdse or \$15.00	Mdse or \$10.00
11:00	C		Displacements	Trophy or \$25.00	Mdse or \$15.00	Mdse or \$10.00
11:30	Unlimited		Hydroplanes	Trophy or \$25.00	Mdse or \$15.00	Mdse or \$10.00
12:00	Unlimited		Displacements	Trophy or \$25.00	Mdse or \$15.00	Mdse or \$10.00

### NOTES

1. The Inter-state race will be run after the regular schedule of events has been completed—teams to be selected at the Bay.
2. Other events will be arranged if entries warrant.
3. Only postponements allowed will be on account of weather.
4. Prizes for first, second and third places in each event.

Each boat entered for a sanctioned race must conform to Association Racing Rules III, Article I, I. L. Y. A.

The course is a straightway of 1/2 mile, 6 times around or 6 miles.

The boat making the most points in the three scheduled races for the class shall be declared the winner. Points to be awarded according to 1928 rules.

Prizes to be awarded for each class.

No races of less than three starting.

**To Save Disqualification Wear Your Life Belt**

### OUTBOARD EVENTS

Motors are divided into classes as follows:

B—Including 14 cu. in. and under 20 cu. in.

C—Including 20 cu. in. and under 30 cu. in.

Free-for-All—Any size motor.

Rules of boat and engine manufacturers as adopted for 1928 to be used. All motors must be stock models.

Boats and engine must be inspected and tagged before the start of each day's races.


Drivers of first five boats to finish must report to judge's boat for inspection immediately.

Mufflers must be used at all times.

All events are considered in the free-for-all driver divisions.

All boats must be numbered. In case of duplication new numbers may be assigned by chairman outboard committee.

Attendance at drivers' meeting on first day of regatta compulsory.



MARINE INSURANCE

FOR INSURANCE

**Noyes P. Gallup & Sons Inc.**  
INSURANCE COUNSELORS  
ESTABLISHED 1888

MILTON N. GALLUP  
HERMAN L. GALLUP

426 TERMINAL TOWER  
CLEVELAND, OHIO

FOR TAXI SERVICE AT PUT-IN-BAY, RELY UPON  
"SMILING" BILLY ADDAMS  
CADILLAC — PIERCE — LINCOLN  
AT THE TAXI RATES OF A FORD

▼▼ FOR correct information and advice on wiring, lighting and electric appliances, use our Free Information Service.

---

▼  
▼▼  
▼▼▼  
▼▼▼▼  
▼▼▼▼▼

## The Electrical League

BUILDERS EXCHANGE BUILDING  
Prospect Avenue                      CHerry 2535  
*Across from the Union Terminal*

# Golf Program

## Golf Committee (XVIII)

LOU DALL, V. B. C., *Chairman*

R. E. POWER, C. Y. C.  
DR. O. S. PORRONY, S. Y. C.  
DR. E. K. HUNTINGTON, V. B. C.  
HARRY E. WHEAL, V. B. C.

CAPT. F. B. PARSONS, V. B. C.  
WEBSTER P. HUNTINGTON, P. I. B. Y. C.  
ARTHUR ELY, P. I. B. Y. C.  
A. J. PENOTE, C. Y. C.

### Monday

11:00 A. M. Medal handicap, 18 holes. Use club handicap or average score.

### Wednesday

3:30 P. M. Second round handicap, 18 holes. Readjust handicap on basis of club handicap and score made in Monday's play.

### Friday

10:00 A. M. Mixed foursome, medal handicap, 18 holes. Net score will be combined score of man and woman less their combined handicaps.



# Entertainment Program Committees

(For Program, See Next Page)

## Commodores' Reception Committee (II)

COM. R. A. LUEDKE, T. Y. C., *Chairman*

COM. BURT SMITH, L. Y. C.  
MORRIS ARNDT, P. I. B. Y. C.  
J. S. MURPHEY, T. Y. C.

LEE B. KELLER, S. Y. C.  
MILTON GALLUP, C. Y. C.  
COM. E. H. REED, T. Y. C.

## Banquet Committee (IX)

RAYMON M. SMITH, V. B. C., *Chairman*

LLOYD KURTZWORTH, B. Y. C.  
EARL AIKEN, T. Y. C.  
JOS. KROLICK, D. B. C.

H. E. TURNER, T. Y. C.  
JAS. SIMMONDS, M. R. Y. C.  
ERNIE SIGGENS, S. Y. C.

## Tuesday Night Committee (X)

COM. JOHN A. HUNTER, V. B. C., *Chairman*

COM. CHAS. THORNBURG, S. Y. C.  
WM. SCHNOOR, P. I. B. Y. C.  
WM. MILLER, P. I. B. Y. C.

COM. T. B. ALEXANDER, P. I. B. Y. C.  
COM. JOHN LAY, P. C. Y. C.  
LEE B. KELLER, S. Y. C.

## Collegiate Committee (XIX)

GEORGE P. WAKEFIELD, V. B. C., *Chairman*

VIRGINIA GORDON  
MARION TALLMAN  
VIRGINIA BATES

BERNICE PHELPS  
HAROLD KOLBE, L. Y. C.  
ART COPELAND, V. B. C.

BETTY HUNTER

## Water Sports Committee (XIV)

COM. OTTO VOSS, C. Y. C., *Chairman*

GEO. VAN, D. Y. C.

A. B. HEAVENRICH, D. Y. C.

### Other Sports Committee (XV)

COM. CHAS. F. FAST, B. L. Y. C., *Chairman*

DR. N. W. SHETTER, C. Y. C.  
OTTO PETERS, M. R. Y. C.  
FLOYD CLANCY, D. Y. C.  
ART HILL, S. Y. C.

DON WALKER, S. Y. C.  
COM. C. H. ROBINSON, B. L. Y. C.  
COM. GORDON BRAWLEY, B. L. Y. C.  
ALLEN JOHNSTON, B. L. Y. C.

### Squadron Sail Committee (XXIII)

L. E. JEANNERET, T. Y. C., *Chairman*

COM. JULIUS MORGAN, B. Y. C.  
W. J. WRIGHT, C. M. Y. A.

COM. GLENN MARTIN, V. B. C.  
R. O. WIRE, T. Y. C.

### Aviation Committee (XX)

HUBERT H. HALL, E. Y. C., *Chairman*

COM. T. B. ALEXANDER, P. I. B. Y. C.  
MILTON HERSBERGER, P. I. B. Y. C.

WAYNE J. SHELDON, G. P. Y. C.

### Patrol Committee (XXI)

COM. W. A. WILSON, B. V. Y. C.

L. F. R. BELLOWS, D. Y. C.

LEROY TUCKER, D. Y. C.

E. A. WRIGHT, C. Y. C.



The Ladies' Entertainment Committee again begs to call attention to the restriction placed upon guests who attend the Bridge Lawn Party on Wednesday. Owing to confusion in previous years, the I. L. Y. A. is compelled to announce that only those ladies who have registered and made reservations on Monday or Tuesday will be eligible.

## "RUSH TEN GALLONS OF RIPOLIN"

"Rush ten gallons of Sea Green Ripolin" the wire read from Boston. It was the Shamrock V that needed refinishing in dry dock after the strenuous crossing from England. Back went the ten gallons, and the Shamrock was soon ready for the race.



Sir Thomas Knows his Tea—  
the Sea—and Ripolin!

For the utmost protection, for continued durability, Ripolin is recognized the world over as the enamel for marine use. Ripolin is manufactured in the United States by only

## THE GLIDDEN COMPANY

Manufacturers of a complete line of Marine Paints, Varnishes Lacquers, Enamels  
NATIONAL HEADQUARTERS CLEVELAND, OHIO

# ▼ ▼ Entertainment Program ▼ ▼



## Ladies Entertainment Committee (XII)

MRS. F. B. PARSONS, V. B. C., *Chairman*

MISS FLORENCE WILSON, B. Y. C., *Vice Chairman*

MRS. E. H. REED, T. Y. C.

MRS. F. W. WAKEFIELD, V. B. C.

MRS. LLOYD KURTZWORTH, B. V. Y. C.

MRS. R. A. LUEDKE, T. Y. C.

MRS. PAUL BOWERS, T. Y. C.

MRS. FRANK B. RAE, JR., V. B. C.

MRS. ROBERT KIMBERLEY, Essex, Ont.

MISS GRACE PARSONS, V. B. C.

MRS. J. W. VAUGHAN, D. B. C.

MRS. H. E. WHEAL, V. B. C.

MRS. E. E. NOBLE, C. Y. C.

MRS. L. A. DALL, V. B. C.

MRS. PAUL TAPPAN, V. B. C.

### Monday, July 13

4:30 P. M.—Open House for Yachtsmen and Ladies aboard the Flagship. (II).

7:00 P. M.—New Style Yachtsmen's Dinner with all Star Revue, Practically Speechless. Tickets \$2.50. Bring the Ladies. (IX).

### Tuesday, July 14

2:00 P. M.—Swimming and Diving Events at the City Dock. Results of Inter-city Match between Cleveland and Detroit covered by Special Announcements on the Public Address System. (XIV).

8:30 P. M.—Red Fire Parade with Bands, followed by Masquerade Ball at the Colonial Pavilion. Costumes for rent at Hotel Crescent. (X).

### Wednesday, July 15

2:00 P. M.—Ladies' Lawn Party at Bay View Hotel intended especially for Yachtsmen's Wives and Sweethearts who have made table Reservations at Headquarters. (XII).

8:30 P. M.—Commodore's Reception and Sunset Ride aboard the Steamer Chippewa. (II).

10:00 P. M.—Collegiate Party at the Bay View Hotel for the Young Folks. (XIX).

### Thursday, July 16

2:30 P. M.—Annual Squadron Sail with Air Escort. Yacht Owners are requested to invite members of the Rocking Chair Fleet. (XIII).

4:00 P. M.—Memorial Services at Perry's Monument conducted by the Sea Scouts. This is followed by a Sea Scout Demonstration. (XXI).

9:00 P. M.—Annual I. L. Y. A. Yachtsmen's Ball at Colonial Pavilion. (X).

### Friday, July 17

10:00 A. M.—Mixed Final Play-off in the Golf Tournament for those who have played earlier in the week. (XVIII).

1:00 P. M.—Beginning of the Water Games at the City Dock including Commodore's Cat Boat Race to which present and past Commodores are eligible. (XV).

4:00 P. M.—Ladies' Cat Boat Race. (XV).

8:00 P. M.—Distribution of Prizes at Hotel Crescent Pavilion. (XI).

## **CLEVELAND TRENCHERS**

*Our Burgee  
for Trenching Satisfaction*



**THE CLEVELAND  
TRENCHER COMPANY**  
*"Pioneer of the Small  
Trencher"*

20100 St. Clair Ave.  
Cleveland, Ohio

Compliments of

## **The W. F. Broer Company**

*Jewelers*



Adams and Superior Street  
TOLEDO, OHIO

## **The Hinde & Dauch Paper Co.**

SIDNEY FROHMAN, *President and General Manager*

Seaworthy Shipping Boxes  
Of Corrugated Fibre

We Pay Special Attention  
to the Wants of Yachtsmen.

*16 Box Factories, 37 Sales and Service Offices*  
General Offices, Sandusky, Ohio

# ▼ ▼ ▼ Trophies and Prizes ▼ ▼ ▼

## Trophy Committee (XVI)

F. RANKIN WEISGERBER, D. Y. C., *Chairman*

COM. JOHN H. COX, C. M. Y. A.	F. A. COMPTON, E. B. C.
COM. MARK HANNA, D. Y. C.	COM. R. A. LUEDKE, T. Y. C.
HOWARD FISH, E. Y. C.	COM. CHALMERS BURN, C. Y. C.
COM. JOHN G. ROBINSON, C. Y. C.	WM. C. NOACK, D. Y. C.

## Prize Distribution Committee (XI)

COMMODORE JOHN H. COX, C. M. Y. A., *Chairman*

COM. C. F. DECKER, V. B. C.	COM. J. W. FRASER, T. Y. C.
A. J. PENOTE, C. Y. C.	COM. JOHN L. DEXTER, D. Y. C.

## FIRST PLACE CUPS AND SILVER TROPHIES FOR 1931 INTERLAKE REGATTA

COMMODORE CHALMERS BURN	Silver Trophy for Universal Class
COMMODORE SIDNEY FROHMAN	Outboard Trophy
COMMODORE C. W. KOTCHER	Silver Tea Set for Ladies' Cat Boat Race
COMMODORE GEORGE MARSH	Silver Trophy
COMMODORE C. O. MINIGER	Silver Loving Cup
COMMODORE C. HAYWARD MURPHEY	Silver Loving Cup
COMMODORE E. E. NOBLE	Silver Trophy
COMMODORE J. W. VAUGHAN	Silver Cocktail Set
COMMODORE A. F. WAKEFIELD	Silver Loving Cup for Low Rig Stars
COMMODORE F. W. WAKEFIELD	Silver Loving Cup for Star Class
COMMODORE W. A. WILSON	Silver Trophy
MR. A. S. CLOSE	Silver Loving Cup
MR. J. J. DAY	Outboard Trophy
MR. R. E. KLAGES	Silver Trophy
MR. PAUL TAPPAN	Silver Trophy
MR. RALPH W. WALTON	Silver Trophy for Water Sports
MR. F. RANKIN WEISGERBER	Silver Trophy
MR. DAVID C. WHITNEY	Silver Cocktail Service
NORTHRUP MEMORIAL TROPHY	
PARSONS MEMORIAL TROPHY	
INTERSTATE CHALLENGE TROPHY	
CORINTHIAN YACHT CLUB	Silver Trophy
DETROIT YACHT CLUB	Silver Loving Cup
GROSSE POINTE YACHT CLUB	22 Square Metre Class Trophy
CHRIS-CRAFT CORP.	Silver Loving Cup
DEE-WITE, INC.	Silver Tea Set
DETROIT TIMES	Perpetual Schooner Trophy
LYMAN BOAT COMPANY	Outboard Trophy
UNIVERSAL MOTOR COMPANY	Trophy
WINTON ENGINE COMPANY	Silver Trophy

## MERCHANDISE PRIZES FOR THE 1931 INTER-LAKE REGATTA

S. APPEL & COMPANY	New York City
Yachting Cap	
BALTIMORE COPPER PAINT CO.	Key Highway, Baltimore, Md.
One box Baltimore Copper Bottom Paint and Baltimore Metal Polish	
BARBOSOL COMPANY	Indianapolis, Indiana
One dozen tubes Barbosol Shaving Cream	
BAUSCH & LOMB OPTICAL COMPANY	Rochester, New York
Pair Marine Glasses	

BEHR-MANNING CORP. ....	Detroit, Michigan
Package Assorted Sand and Garnet Papers	
BENNING'S OWN .....	Fifth Ave., New York City
One hundred special yachting cigarettes	
BERRY BROTHERS, INC. ....	Detroit, Michigan
Electric Clock	
Two gallons Berry's Bakelite Spar Varnish	
BOYDELL BROS. WHITE LEAD & COLOR CO. ....	Detroit, Michigan
Three Gallons Boydell's Bakelite Spar Varnish	
BREINING BROTHERS, INC. ....	Hoboken, New Jersey
One gallon Breining's Bright Green Bottom Enamel	
BURGER BOAT COMPANY .....	Manitowoc, Wis.
Motor Boat Merchandise	
EMIL CALMAN COMPANY .....	Long Island City, New York
One gallon Calman's Spar Varnish	
CHAMPION SPARK PLUG CO. ....	Toledo, Ohio
Ten Spark Plugs	
CLIMAX CLEANER MFG. CO. ....	Cleveland, Ohio
Three boxes Assorted Marine Paints and Varnishes	
CROWELL CHEMICAL COMPANY .....	East Rutherford, New Jersey
One box of twenty four quarts Oxford Brass Polish	
DETROIT OIL & NAVAL STORES .....	Detroit, Michigan
Five gallon filling can Sterling Motor Oil	
EAGLE-PICHER LEAD COMPANY .....	Cincinnati, Ohio
Four twenty-five pound kegs Red Lead in Oil	
ENTERPRISE OIL COMPANY .....	Buffalo, N. Y.
Two five gallon cans Duplex Motor Oil	
FIDELITY TRUST COMPANY .....	Detroit, Michigan
Safety deposit box for a year	
FORBES VARNISH COMPANY .....	Cleveland, Ohio
12 quarts Forbes Bakelite Spar Varnish	
FORE AN' AFT .....	New York City
Five one-year subscriptions to FORE AN' AFT	
GILLESPIE VARNISH COMPANY .....	Jersey City, N. J.
Four gallons Monarch Bull Dog Cream Paint Remover	
J. C. GOSS COMPANY .....	Detroit, Michigan
Set Code Flags	
GULF REFINING COMPANY .....	Detroit, Michigan
Motor Oil	
J. L. HUDSON COMPANY .....	Detroit, Michigan
Pair Marine Glasses	
INLAND MANUFACTURING COMPANY .....	Dayton, Ohio
Flexo-Tray Ice Cube Freezer	
LLOYD'S REGISTER OF AMERICAN YACHTS .....	17 Battery Place, N. Y. City
1931 Register of American Yachts	
MARTIN VARNISH COMPANY .....	Chicago, Illinois
One box Assorted Amber-Lyte Spar Varnishes	
MATHEWS COMPANY .....	Port Clinton, Ohio
Waterproof Can of Flares	
Ship's Clock	
Fire Extinguisher	
Life Ring Buoy	
Electric Horn	
Electric Searchlight	
MICH-I-PENN OIL & GREASE CO. ....	2675 E. Atwater St., Detroit
Two five gallon cans Mich-I-Penn Oil	
MOTOR BOATING .....	New York City
Two one-year subscriptions to MOTOR BOATING	



NATIONAL LOCK WASHER CO.	Newark, New Jersey
<i>Detroit Agents: Henry Smith &amp; Company</i>	
One Outboard Speedometer	
NEW JERSEY PAINT WORKS	Jersey City, N. J.
One Box assorted New Jersey Red Bottom Paint	
O'BRIEN VARNISH COMPANY	South Bend, Indiana
Three gallons O'Brien's Two Hour Spar Varnish	
OLD TOWN CANOE COMPANY	Old Town, Maine
Five foot Old Town Paddle	
JOSEPH PARKMAN	8871 Bay 35th St., Brooklyn, N. Y.
Set Star Boat Hardware	
PENNZOIL COMPANY	Oil City, Pa.
One five-gallon can Pennzoil for outboards	
One five-gallon can Pennzoil for Aviation event	
PERKINS MARINE LAMP CO.	Brooklyn, New York
Electric Searchlight	
PONTIAC VARNISH COMPANY	Pontiac, Michigan
Three Gallons Pontiac Spar Varnish	
THE PORTABLE LIGHT COMPANY	12 Warren Ave., New York City
Outboard Searchlight	
POWER BOATING	Cleveland, Ohio
Two one-year subscriptions to the SPORTSMAN	
PYRENE MANUFACTURING COMPANY	Newark, New Jersey
<i>Detroit Agent—B. R. Gleming, 14002 Coyle Avenue</i>	
Chrome Pyrene Extinguisher	
THE RUDDER PUBLISHING COMPANY	9 Murray St., New York City
Two one-year subscriptions to THE RUDDER	
SAFE-AIR APPLIANCE COMPANY	Detroit, Michigan
Six-inch pneumatic Safe-Air Fender	
B. SCHELLENBERG & SONS	Brooklyn, New York
One Yachting Cap	
EDWARD SMITH & COMPANY	Long Island City, New York
3 Boxes Assorted marine paints and varnishes	
HENRY SMITH & COMPANY	Detroit, Michigan
Stannus Outboard Propellor	
THE SPORTSMAN	60 Batterymarch, Boston, Mass.
Two one-year subscriptions to the SPORTSMAN	
STANDARD VARNISH COMPANY	New York City
One Box Oceana Bakelite Varnish	
STEARNS-McKAY COMPANY	Marblehead, Mass.
One gallon Marblehead Emerald Green Bottom Paint	
THE STERNO CORPORATION	New York City
Sterno Stove	
CHAS. A. STRELINGER COMPANY	East Larned St., Detroit, Mich.
One roll of Tools complete	
TARR & WONSON COMPANY	Gloucester, Mass.
Two gallons Tarr and Wonson's Bottom Paint	
W. & J. TIEBOUT COMPANY	New York City
Special Safety Alcohol Stove	
TRUSCON LABORATORIES	Detroit, Michigan
Six Gallons Truscon Spar Varnish	
JAMES VERNOR COMPANY	Detroit, Michigan
Case Vernor's Ginger Ale	
WAMSUTTA MILLS	New Bedford, Mass.
Set Wamsutta Percale Colored Sheets and Pillow Cases	
J. T. WING & COMPANY	Bates Street, Detroit, Mich.
Bedford Manila Tow Line	
C. A. WOOLSEY PAINT & COLOR COMPANY	Jersey City, N. J.
Two Cans Woolsey's Speed Boat Red Bottom Paint	
YACHTING, INC.	New York City
Two one-year subscriptions to YACHTING	

Compliments of  
J. W. KOERHMAN  
T. Y. C.

a.c.f.  
and  
RICHARDSON *Cruisers*

Distributed by  
N. J. SHEA  
C. Y. C. Island, Cleveland, Ohio

PUT IN AT OUR MARINE GARAGE FOR  
GASOLINE, OIL, SUPPLIES and REPAIR WORK

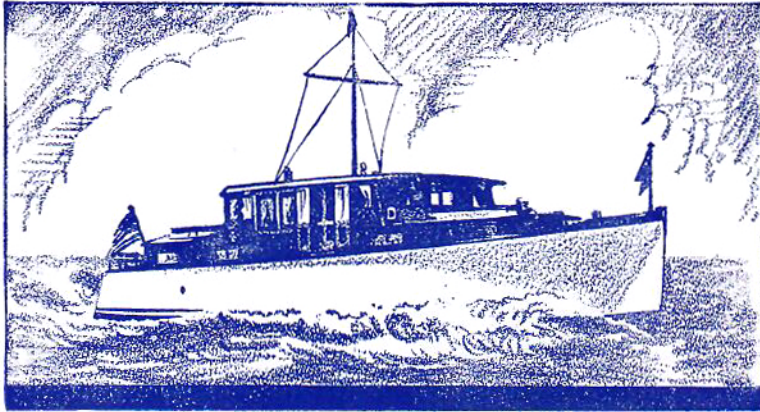
"Believe it or not: this man Rae can write"—

says Al Wakefield  
(and he ought to know)

Advertisements  
Circular letters  
Publicity  
A History of Your Business

FRANK B. RAE, Jr.  
ROCKEFELLER BLDG. CLEVELAND





# MATTHEWS CRUISERS

The man who naturally expects his boating dollar to go farther can count on a husky seagoing Matthews "38" or "46" to supply him the last word in modern values. They are sturdily built from the very finest materials obtainable—40 years producing motor craft of all types has brought its own reward in ripened experience. Comfortable and luxurious beyond compare—yet compact enough for one man to handle in any weather. Plan on a Matthews for your next boat. Speeds from 12 to 30 miles per hour—sleeps five to ten passengers—10 splendid models—good for a 10,000-mile cruise without a minute's notice. Get all the facts from us today

**Are Backed  
by 40 Years'  
Experience**

● **\$5980  
to \$25,000**

*Afloat  
Port Clinton*



**THE MATTHEWS Co.**  
PORT CLINTON, - - - OHIO

EUROPEAN PLAN  
COLONIAL HOTEL

Sarnia, Ont.

J. F. MORRISON, PROP.

125 ROOMS WITH BATH

WE SPECIALIZE IN  
**BOAT PORTRAITURE**

Take this opportunity to get a really good picture of your boat

or informal news photos of your friends aboard or ashore.

APPOINTMENTS MAY BE MADE AT  
I. L. Y. A. HEADQUARTERS  
PUT-IN-BAY YACHT CLUBHOUSE

**The Photocraft Company**  
118 ST. CLAIR AVENUE,  
CLEVELAND

*Mr Brown* WHO  
MADE THE COVER OF THIS  
PROGRAM WOULD WELCOME  
THE OPPORTUNITY OF  
DISCUSSING WITH YOU YOUR  
COMMERCIAL ART  
PROBLEMS

A. L. BROWN STUDIOS

Advertising Art

326 BULKLEY BUILDING CLEVELAND, OHIO

CHERRY 6280

MODERN  
PORTRAITURE  
OF CHARACTER

DEVINE STUDIOS, INC.  
Kinney & Levan Building  
CLEVELAND



DESIGNED AND PRODUCED BY LENOX,  
INCORPORATED, IS AN OUTSTANDING  
CREATION . . . SUPERIOR IN QUALITY  
. . . DISTINGUISHED WITH ONE'S OWN  
MONOGRAM . . . MODERATELY PRICED.

Prices on Request  
**The Kinney & Levan Co.**  
EUCLID at 14TH, CLEVELAND