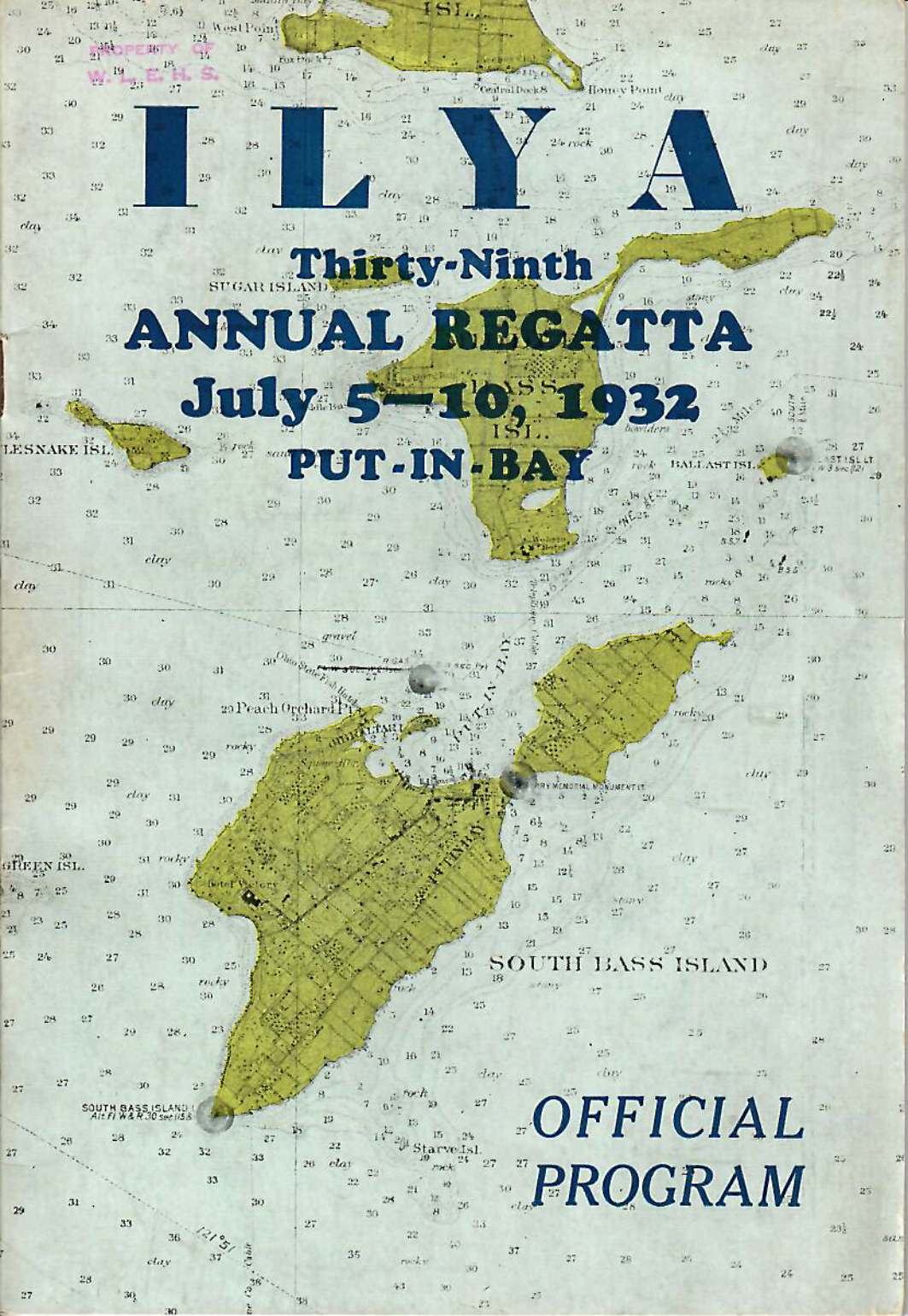


ILLYA

Thirty-Ninth ANNUAL REGATTA July 5-10, 1932 PUT-IN-BAY

OFFICIAL PROGRAM



◆

Here's "How"
to Every
Red Blooded
Yachtsman



*Marine Engines from
4 to 450 h. p.*

KERMATH MFG. CO.
5890 Commonwealth Avenue
DETROIT

KERMATH



53 YEARS
SAILMAKERS
AND
RIGGERS

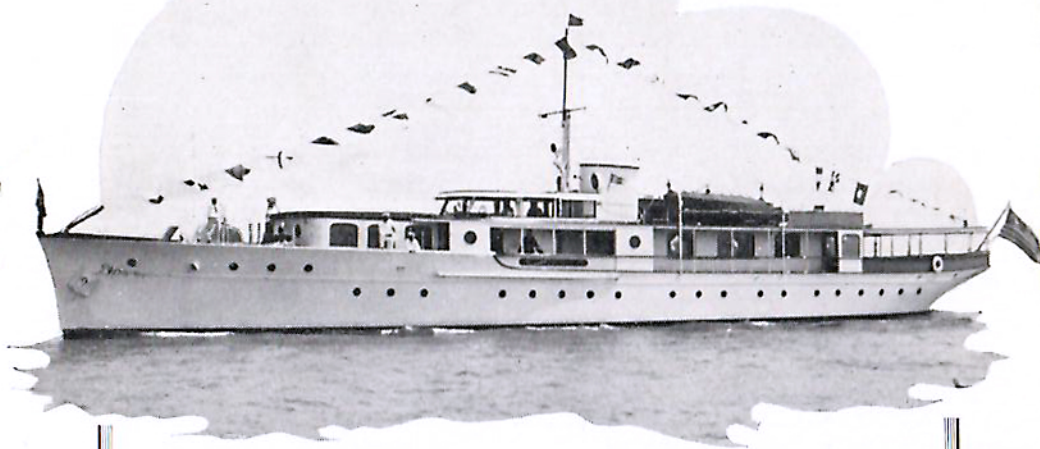
—
*Flags
Pennants
Burgees
Cushions
Canvas Covers
Awnings*



Woodbridge at Bates
Detroit, Mich.

PROPERTY OF
W. L. E. H. S.

ROSEWILL II, W. C. Rands'
126ft. Defoe-built
Steel Yacht



We Build Fine Yachts for Discriminating
Yachtsmen, Such as:—

OLIVE K	SARAMAR III	REOMAR III
REOMAR IV	YOREDA	DANORA
BER-CLO III	HELENE	HERSELF
BARBETT	ROYONO	LENORE
LADY JEAN II	CLARINDA	BONNY II
GRATHEA	ALMA F	RESTLESS
ROBARK	BO-PEEP	CHARLOTTE

All for Great Lakes Owners.

We ask only a chance to please at a price that is right.



DEFOE BOAT & MOTOR WORKS
BAY CITY, MICHIGAN

FILE NO. _____ PHOTO DATE _____

TITLE _____

PLACE *HELEN BROOKS*

COLLECTION *W. L. E. H. S. COLLECTION*

OFFICERS OF I L Y A = 1932



COMMODORE J. WALTER VAUGHAN
Detroit Boat Club
Commodore



COMMODORE STANLEY GARDNER
Cleveland Yachting Club
Rear-Commodore



COMMODORE C. O. MINIGER
Toledo Yacht Club
Vice-Commodore



ESMOND AVERY
Bayview Yacht Club
Secretary-Treasurer

▼ *Inter-Lake Yachting Association* ▼

OFFICERS AND COMMITTEE CHAIRMEN, 1932

Commodore.....	J. W. VAUGHAN, D. B. C.
Vice-Commodore.....	C. E. MINIGER, T. Y. C.
Rear-Commodore.....	STANLEY GARDNER, C. Y. C.
Fleet Captain.....	ALGER SHELDON, B. V. Y. C.
Secretary-Treasurer.....	ESMOND AVERY, B. Y. C.
Librarian.....	FRANK R. FREY, T. Y. C.
Fleet Surgeon.....	DR. A. R. HACKETT, D. Y. C.
Sail Yacht Measurer.....	P. C. WILLIAMSON, B. Y. C.
Power Boat Measurer.....	FRANK GERDNER, E. B. C.
Reception Committee.....	WILLIAM BEWICK, D. B. C.
Power Boat Rules Committee.....	FRANK GORDON, E. B. C.
Power Boat Judges.....	CHARLES THORNBURG, S. Y. C.
Power Boat Race Committee.....	L. F. R. BELLOWS, D. Y. C.
Sail Yacht Judges.....	HARRY KENDALL, D. Y. C.
Sail Yacht Race.....	HARRY AUSTIN, D. B. C.
Entertainment Committee.....	JOE KROLIK, D. B. C.
Prize Committee.....	TED NOACK, D. B. C.
Ladies' Entertainment Committee.....	MRS. C. MITCHELL, P. I. B. Y. C.
Outboard Motor Committee.....	A. R. HACKETT, D. Y. C.
Sports Committee.....	O. R. BENJAMIN, D. B. C.
Aviation Committee.....	HUBERT H. HALL, E. Y. C.
Patrol Committee.....	WILLIAM A. WILSON, B. V. Y. C.
Publicity Committee.....	WALTER X. BRENNAN

ADVISORY COMMITTEE—PAST COMMODORES

C. G. JENNINGS	A. A. SCHANTZ
HENRY W. HESS	E. E. NOBLE
HARRY C. KENDALL	R. H. REED
GEORGE MARSH	OTTO F. BARTHEL
F. W. WAKEFIELD	WILLIAM A. WILSON
CHARLES W. KOTCHER	MARK R. HANNA
SIDNEY FROMAN	A. F. WAKEFIELD

▼ ▼ *I. L. Y. A. Member Clubs* ▼ ▼

BAYVIEW YACHT CLUB OF DETROIT	LAKESIDE YACHT CLUB, CLEVELAND
BAYVIEW YACHT CLUB OF TOLEDO	LORAIN YACHT CLUB
BUCKEYE LAKE YACHT CLUB,	MAUMEE RIVER YACHT CLUB, TOLEDO
COLUMBUS	METROPOLITAN YACHTING ASS'N,
BUFFALO CANOE CLUB	CLEVELAND
BUFFALO YACHT CLUB	MONROE YACHT CLUB
CLEVELAND YACHTING CLUB	OTTAWA RIVER YACHT CLUB, TOLEDO
CORINTHIAN YACHT CLUB, DETROIT	PORT CLINTON YACHT CLUB
DETROIT BOAT CLUB	PUT-IN-BAY YACHT CLUB
DETROIT YACHT CLUB	RIVERSIDE BOAT CLUB, TOLEDO
EDGEWATER YACHT CLUB, CLEVELAND	SAGINAW BAY YACHT CLUB, BAY
EDISON BOAT CLUB, DETROIT	CITY, MICH.
ERIE YACHT CLUB	SANDUSKY YACHT CLUB
GROSSE POINTE YACHT CLUB,	SARNIA YACHT CLUB, ONTARIO,
DETROIT	CANADA
GULL LAKE YACHT CLUB, BATTLE	TOLEDO YACHT CLUB
CREEK	VERMILION BOAT CLUB



Flagship of Commodore J. Walter Vaughan, D. B. C.
"Red Arrow" Put-in-Bay Regatta, 1932

▼ ▼ *General Information* ▼ ▼

HEADQUARTERS: PUT-IN-BAY YACHT CLUBHOUSE

Headquarters Open: 7:30 A. M. to 6 P. M.

All yachtsmen and their ladies must register. *Reservations for the Ladies' Bridge Lawn Party must be made at time of registration. See below.*

All yachtsmen of the Inter-Lake and invited clubs, whether yacht owners or not, are invited and urged to participate in all of the events of the week and have their ladies participate wherever possible, to make the week successful in every way.

Obtain entry blanks, racing numbers and racing information at Headquarters.

Every yacht should be measured by the measurer of its home club and measurer's signature should be on entry blank.

Sign your entry and state clearly all answers to questions and get your entry in early to assist the committees.

No entry fee will be charged in any event.

Two or more entries must be received or an event will be cancelled. Prizes in any event will be awarded according to number of entries. If two entries, only one prize will be awarded; if three entries, two prizes, etc.

Postponements, changes in courses or events, special races, results and all official announcements will be posted on the Bulletin Board at Headquarters. Watch it!

All events of the Regatta will be started promptly on time.

The official time used at meet will be from clock at Headquarters.

Only those ladies who have made table reservations by registering at Headquarters on Tuesday will be eligible for the Ladies' Bridge Party. Fifty tables of bridge will be provided with table prizes.

Watch Bulletin Board

There will be a Bulletin Board at Headquarters where changes in program and special instructions will be posted throughout the week.

Watch Bulletin Board in particular for special sail yacht races. Several are planned for this year, for the benefit of those who want to get in more sailing on the excellent Put-In-Bay course. Some attractive prizes will be offered.



To Every Member of the Inter-Lake Yachting Association we wish

FAIR WINDS and a SNUG HARBOR

THE F. W. WAKEFIELD BRASS COMPANY

VERMILION, OHIO, U. S. A.

For over 30 years manufacturers of high-grade lighting specialties

DIRECTORS, YACHTSMEN'S FUND

Organized 1916

*COM. F. W. WAKEFIELD, President, V. B. C.

*COM. SIDNEY FROHMAN, Vice-President, S. Y. C.

COM. HARRY AUSTIN, D. B. C.

COM. E. H. REED, T. Y. C.

*COM. OTTO BARTHEL, B. Y. C.

W. J. BILLINGSLEA, M. R. Y. C.

COM. HENRY HESS, T. Y. C.

WARREN ROBERTS, C. Y. C.

* Trustee

PATROL COMMITTEE

WILLIAM A. WILSON, B. Y. C., Chairman

E. A. WRIGHT, Detroit

W. F. GOODRICH, Jackson

OTHER SPORTS COMMITTEE

E. R. CONNER, E. B. C., Chairman

O. R. BENJAMIN, E. B. C.

GEORGE E. VAN, D. Y. C.

W. A. GREIG, E. B. C.

M. E. SICKELSTEEL, L. S. C. C.

RECEPTION COMMITTEE

WILLIAM BEWICK, D. B. C., Chairman

COM. C. O. MINIGER, T. Y. C.

COM. STANLEY GARDNER, C. Y. C.

COM. T. B. ALEXANDER, P. I. B. Y. C.

MAT INGOLD, D. Y. C.

LADIES' ENTERTAINMENT COMMITTEE

MRS. CHARLES O. MITCHELL, P. I. B. Y. C., Chairman

MRS. JAMES BROWN BELL, JR.

MRS. JOS. C. RADDATZ, Lakewood, O.

MRS. AVERY WIEGERT

MRS. LAW. GAZZOLA, P. I. B. Y. C.

MRS. FRED. J. RIEBEL, JR., T. Y. C.

MRS. R. A. LUEDTKE, T. Y. C.

MRS. CHARLES THORNBURGH, S. Y. C.

DELEGATES

AMERICAN POWER BOAT ASSOCIATION

Com. W. D. Edenburn, D. Y. C.

Com. John G. Robinson, C. Y. C.

Com. Charles Thornburg, S. Y. C.

NORTH AMERICAN YACHT RACING UNION

Com. W. A. Wilson, B. Y. C.

Com. R. A. Leudtke, T. Y. C.

YACHT RACING UNION OF THE GREAT LAKES

Com. C. G. Jennings, G. P. C.

AMERICAN ATHLETIC UNION

Com. O. R. Benjamin, E. B. C.

▼ ▼ Official Program ▼ ▼

TUESDAY, JULY 5

Morning: Arrival of night race from Amherstberg, Ont. Sponsored by the D. R. Y. A. The Toledo Yacht Club race, the Winton race from Rocky River and the Star class run from Vermilion will be sailed on this day and arrivals are scheduled throughout the day.

Afternoon: Registration at Headquarters—Put-in-Bay Yacht Club. Registration is necessary if you plan to take part in various features of the regatta. Get your tickets at this time for the Boxing Show, Hard Times Party and Get-together Dinner. Ladies must register at this time for Bridge Party. Enter for special sailyacht races.

Evening: 6:15 P. M. Inter Lake Get-together Dinner. Everyone is invited and don't forget to bring the ladies, Crescent hotel.

Tickets, \$1.50.

9:00 P. M. Hard Times Party at Colonial Ballroom. Here is something new for the Inter Lake. Don't miss it. Come as is. Sailors 99 cents, ladies 1 cent.

WEDNESDAY, JULY 6

Morning: 8:30 A. M. Sailyacht races, including all classes.

Afternoon: 3:00 P. M. Powerboat races, all classes.

4:00 P. M. Ladies' Catboat race. Fox dock.

Evening: 6:30 P. M. Start of Deep Water race to Lorain and return, for cruising sailyachts. Start opposite Perry Memorial Monument. Don't miss seeing this start. Skippers, get special instruction sheet at Headquarters.

8:00 P. M. Boxing Show at Townhall. Tickets, 75 cents.

THURSDAY, JULY 7

Morning: Finish of night race to Lorain and return.

8:30 A. M. Sailyacht races, all classes except schooners, yawls and universals.

10:45 A. M. Arrival of airplane cruises from Detroit and Cleveland. Put-in-Bay airport.

Afternoon: 1:00 P. M. Airplane Pilots' luncheon at Bay View House.

2:30 P. M. Pilots' golf tournament and catboat race.

2:30 P. M. Ladies' bridge party. Crescent hotel pavilion.

4:00 P. M. Commodores' catboat race. Fox dock.

7:00 P. M. Sea Scout demonstration. Ball grounds.

Evening: 9:30 P. M. Venetian night program. Out-of-door entertainment and fireworks. "Open house" aboard all boats at anchor in harbor.

FRIDAY, JULY 8

Morning: 8:30 A. M. Sailyacht races, all classes.

Disbandment of air cruises.

Afternoon: Special races and any necessary sailoffs.

Evening: Distribution of prizes. Crescent Pavilion.

SATURDAY, JULY 9

Sailoffs. Departure of flagship and fleet.

The Famous
Berryspar Varnish

(Bakelite Base)

and other

Berrycraft Marine Finishes

Carried in stock in Detroit by

DETROIT YACHT HARBOR
 FIELD HARDWARE CO.
 THOMAS HARDWARE CO.
 WEISGERBER PAINT & VARNISH
 CO.

Win One of the Marine
 Prizes Donated by

BERRY BROTHERS
Varnishes • Enamels • Lacquers • Paints • Oils
 Detroit, Mich. Toledo, Ohio

Compliments

of a

Toledo, Ohio,

Firm

Compliments of

The Toledo Edison Co.

Jefferson and Superior Street

Toledo, Ohio

▼ ▼ **Sail Yacht Program** ▼ ▼

SAIL YACHT COMMITTEE

HARRY AUSTIN, D. B. C., Chairman

P. C. Williamson, B. Y. C.

P. D. Wright, D. B. C.

RAY DALEY, D. Y. C.

C. D. Lynch, I. L. Y. A.

Sam Wilson, D. Y. C.

A. M. GIBSON, E. B. C.

Classifications

Universal Class

A—Rating under 25 ft.

B—Rating over 25 ft.

R—Sloops

K—15 ft. Cats (Private owned)

CK—15 ft. Cats (Club owned)

CK—Free for All

C—C Class

S—Star class (High Rig)

S—Star class (Low Rig)

Y—Yawls (A—Rating 25 ft. and
 under) (B—Rating over 25 ft.)

SCH—Schooners and ketches.

22 Sq. M.—22 Square Meter.

CC—Cabin cats.

Starting Time

Wednesday, Thursday and Friday

Warning Gun	8:30	A. M.	
Preparatory Gun	8:55	A. M.	
Start Class R.....	9:00	A. M.	Long Course
Start 22 Sq. M.....	9:05	"	" "
Start A, Both A and B Divisions.....	9:10	"	" "
*Start Y, Both A and B Divisions.....	9:15	"	" "
*Start SCH	9:20	"	" "
Start Class S (High Rig).....	9:25	"	" "
Start Class S (Low Rig).....	9:30	"	" "
Start Class C.....	9:35	"	Short "
Start Class K.....	9:40	"	" "
Start Class CK.....	9:45	"	" "
Start Class CK Free for All.....	9:50	"	" "
Start Class CC.....	9:55	"	" "

Note: Classes marked (*) do not race on this schedule Thursday, but will start on Deep Water race, on special course, at 6:30 P. M. Wednesday. Get details at headquarters.

Races for special classes, not listed above, will be provided by the Sail Yacht Committee upon request of three or more owners, if in the judgment of the Committee, such action is advisable.

All races will be sailed under the Y. R. U. and I. L. Y. A. Rules, except the I. L. Y. A. Deep Water race, which will be sailed under the Port Huron-Mackinac Rules.

Special races for 22 Sq. M., K, CK, Star and C Classes on Tuesday, Wednesday and Thursday will be announced by the Sail Yacht Committee, on the Bulletin Board at Headquarters.

THE CRESCENT HOTEL MANAGEMENT

Offers Attractive Service and Reduced Prices in Their
Up-to-Date Dining Room

Try it—you will be pleased

T. B. ALEXANDER, *Manager*

PHONE 42-W

RETAIL ICE

MILLER'S BOAT LIVERY

Marine Transportation

Speed Boats—Boats for Fishing—Row Boats

CARLOAD FREIGHT

CLAMSHELL SERVICE

PUT-IN-BAY, OHIO

EXCELLENT MEALS

STEAKS AND CHOPS

THE ROUND HOUSE

Crist Seibert

Lunch Counter and the Original Hamburger

AMERICAN

EUROPEAN

BAY VIEW HOUSE

PUT-IN-BAY, OHIO

Just what this homelike hotel suggests—a restful, energy-building environment in a spot no human hands could improve.

That's the simple story of the Bay View House

J. J. DAY, *Proprietor*

When you put in at the Bay—

SCHNOOR & FUCHS

For your general merchandise, groceries, meats, fruits and vegetables in season.

Fresh milk and cream. Hardware and boat supplies.

Drugs and Soda Fountain

THE PARK HOTEL

PUT-IN-BAY

American and European

Special Rates to Yachtsmen

LUCAS MEYER, *Proprietor*

▼ Racing Rules for Sailing Yachts ▼

Certificate of measurement must be filed with entry. The Sail Yacht Regatta Committee reserves the right to order any yacht re-measured.

All races under the Y. R. U. and I. L. Y. A. Rules, as amended to date, except I. L. Y. A. Deep Water Race, which is open only to boats eligible to the Port Huron-Mackinac event. The same rules will apply.

In CK class, championship flag goes to the skipper making the highest individual percentage, while a cup will go to the club having the highest percentage with three boats.

Entries for all races must be made with Sail Yacht Regatta Committee at headquarters for 6 p. m., Tuesday, July 5th, unless competing yacht arrives too late to enter before this time.

Alterations of the race program or sailing course may be made at the discretion of the Sail Yacht Regatta Committee. Such changes will be posted on Bulletin Board.

Numbers must be carried by each yacht on each side of its mainsail. These numbers can be supplied by the Sail Yacht Regatta Committee at Headquarters.

No person other than the Judges, Regatta Committee and Clerks will be allowed on Judges' boat without the consent of the Chairman of the Sail Yacht Regatta Committee.

A red flag on the Regatta Committee boat will indicate all stakes are to be left to port. A green flag indicates all stakes to be left to starboard. The Judges' boat will fly a white flag with blue letters R. C.

Guns must not be fired from any yacht within one hour of the time of starting races, and not until after every yacht has crossed the finish line.

All vessels following the races must keep to leeward, and at such distance as not to interfere with the maneuvers of the competing yachts.

The races are open to every yacht which complies with the rules and which is regularly enrolled in any club in the Inter-Lake Yachting Association, Y. R. U., or which has been invited to participate in the races.

All boats sailing the long course will have four hours' time limit.

All boats sailing the short course will have three hours' time limit.

Yachts whose preparatory gun has not been fired must keep clear of starting line. Any yacht willfully violating this rule will be disqualified.

Time Allowances

Time allowances for yawls, ketches, schooners and universal boats will be computed under formula and table of the Yacht Racing Union Rules as amended to date, for all races.

▼ ▼ Sailing Courses ▼ ▼

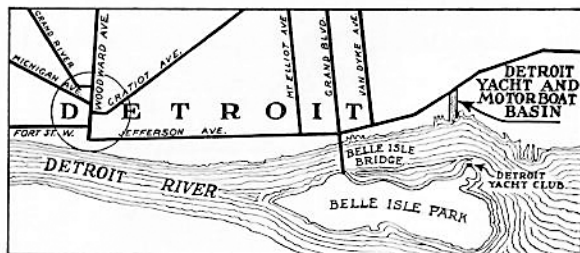
The course for all series races for sailing yachts in Universal, SCH, R, Y, 22 Sq. meters and C classes will be triangular, starting from a line between a flag buoy off the east end of Gibraltar Island and a similar flag buoy in line with the west end of Middle Bass, to and around a stake three nautical miles N. N. W., thence to and around a stake three nautical miles S. W. three-quarters S., thence to and around a stake three nautical miles E. one-half S., to and across starting line between starting stakes. In finishing yachts must cross the starting line in the opposite direction from which they start. All stakes must be left to port, unless otherwise ordered by the Sail Yacht Regatta Committee as heretofore provided.

The course for Classes Star, K, CC and CK, starting from the same line, will be a shorter triangle with the same compass courses, but with one and one-half miles to the side, or a total of four and one-half nautical miles.

Class Star: Rules of the Star Class Yacht Racing Association to govern.

Special instructions regarding the Deep Water race to Lorain and back on July 6 will be given out at Headquarters. Blue prints of the course will also be available at no charge.

Announcing the New Detroit Yacht and Motorboat Basin



All members of the I. L. Y. A. are cordially invited to visit the new basin for yachts.

BOAT REPAIRING
AND
ENGINEERING

MARINE RAILWAY
BOAT GARAGES
DOCK SPACE

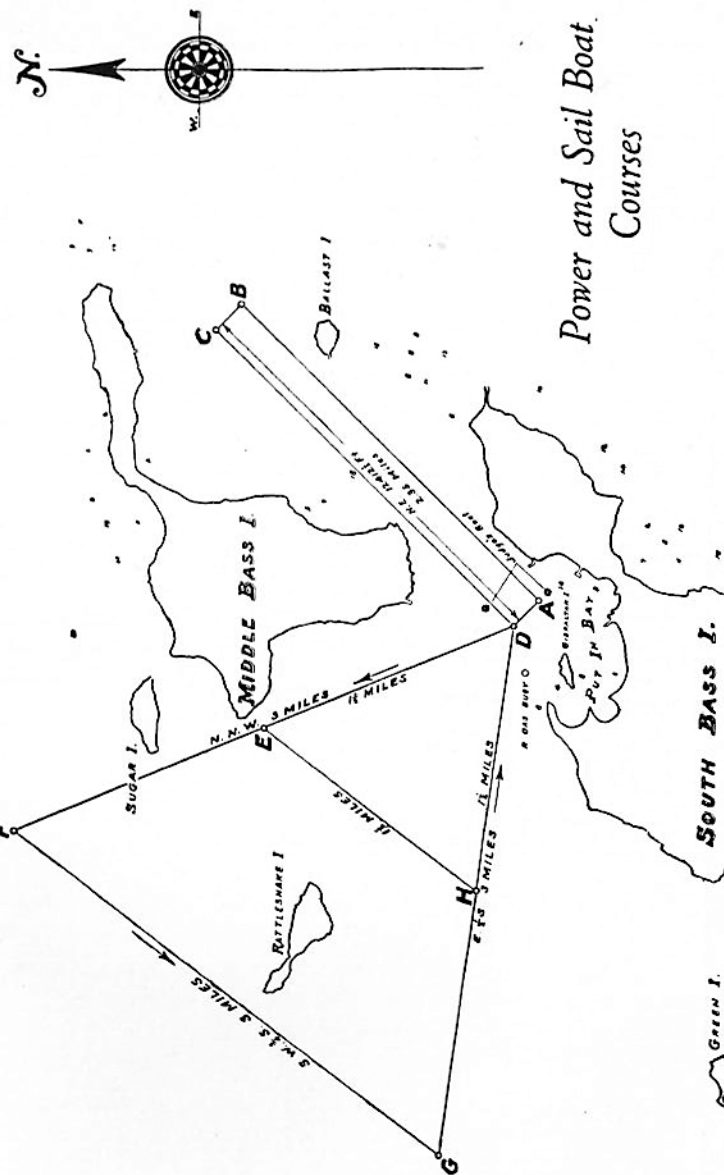
MARINE ELEVATOR
BOAT SUPPLIES
GASOLINE PIER

Ample Storage for Boats up to Two Hundred and Fifty Gross Tons

Detroit Yacht and Motorboat Basin

Foot of Motor Boat Lane

Office: 2512 Buhl Building - - - - - Cadillac 5872
Boat Yard: Foot of Motor Boat Lane - - - - - Lenox 1322



FLY

To the Put-In-Bay Regatta

Stinson Cabin Planes

RATES { ONE WAY—\$7
ROUND TRIP—\$13
From Detroit

* * *

MAYCOCK FLYERS

Members Stinson Air Cab Operators

Association

Air Cab Service Anywhere, Anytime

Plymouth & Middlebelt. Red. 3865



MODERN DISTINCTIVE USEFUL!

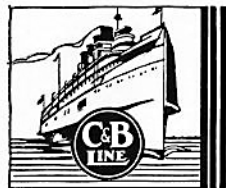
The same superlative quality and performance long distinguishing LYMAN outboards are more than ever characteristic of the new Utility in-board runabouts. Big, fast, able, LYMAN Clinker-Built inboards offer incomparable seaworthiness, dryness, comfort in every direction of seaway.

Their original interior arrangement utilizes every inch of space from stem to stern, allowing perfect freedom of movement, maximum capacity—thorough usefulness. Let a LYMAN lead the way to lasting boat enjoyment!

Inboard Runabouts—17, 19, 23-ft.
A full line of Tenders and Fine Outboard Models—8 to 15-ft.

Lyman Boat Works

1527 First St. Sandusky, Ohio



Travel on LAKE ERIE

Steamers nightly, each way, between Cleveland and Buffalo at 9 P. M.

CLEVELAND, PORT STANLEY, Canada, Division—Special schedules on Friday, Saturday and Sunday only, July 1st to Sept. 5th.

Daily Excursions to CEDAR POINT and PUT-IN-BAY, June 12th to Sept. 5th.

Ask about new low fares and auto rates

The Cleveland & Buffalo Transit Co.

E. 9th St. Pier - Cleveland, Ohio

OUTBOARD MARINE
MOTORS HARDWARE

YACHT SUPPLIES

HENRY H. SMITH & Co.

"Everything for Boats"

334 East Jefferson

DETROIT

PROPELLORS REVERSE GEARS

Power Boat Program

POWER BOAT JUDGES COMMITTEE

C. A. THORNBURGH, S. Y. C., Chairman
JOHN TALLMAN, T. Y. C. H. B. GUNNISON, E. B. C.
J. E. TROMBLEY, L. Y. C. C. B. SOLDERS, E. Y. C.
JOHN ROBINSON, C. Y. C. EARL SHANTEAU, O. R. Y. C.
JOHN COX, M. Y. C. WILLIAM LYMAN, S. Y. C.
CHARLES FRANCIS, T. Y. C.

POWER BOAT RACE COMMITTEE

L. F. R. BELLOWS, D. Y. C., Chairman
C. W. KOTCHER, D. Y. C. E. H. REED, T. Y. C.
CLARENCE HARVEY, D. R. R. A. A. R. HACKETT, D. Y. C.
JOHN TALL, T. Y. C. OTTO BARTHEL, D. Y. C.

CLASSIFICATIONS

Division	Type
1	Cruisers, 10 knots (not over 11.5 M. P. H.)
2	Fast cruisers, over 10 knots.

WEDNESDAY, THURSDAY AND FRIDAY

July 6, 7, 8

Preparatory Gun, 2:30 P. M.

Division	Start	Distance	Type
1	3:00	10 knots	Cruisers
2	3:20	10 knots	Fast Cruisers

The Cover

PROGRAM-PUBLICITY COMMITTEE

WALTER X. BRENNAN, B. Y. C., Chairman
E. E. REED, T. Y. C. ALBERT SHUTTS, C. Y. C.
A. S. CLOSE, T. Y. C. HARRY LEDUC, D. Y. C.

The program committee this year decided to make the cover of the program not only decorative but useful, hence a chart of the waters surrounding Put-In-Bay. North, of course, is to the top and the scale is approximately 1/8 inch to the statute mile. Water levels on June 20 were 1.86 feet above that of the chart, so correct depths are that much greater than shown. Navigation lights are easily found by the large dark spots.

Perry Memorial Monument, located on the neck of land on South Bass Island, is the outstanding landmark of the vicinity and is lighted at night. Navigation features of the sailing and power boat courses can be worked out by comparing the cover with the course chart inside. The Ohio mainland is three miles to the south of the lower end of South Bass, a telephone cable shown at the lower edge of the cover connecting the island with Catawba point. The Put-In-Bay Airport is directly opposite Starve Island, just east of the cable.

▼ ▼ Past Commodores ▼ ▼

*GEO. W. GARDNER, C.Y.C.....1894
 *JOHN E. GUNCKEL, T.Y.C.....1895
 *GEO. H. WORTHINGTON,
 C.Y.C.1896
 *S. O. RICHARDSON, JR., T.Y.C.....1897
 ALEX I. MCLEOD, D.Y.C.....1898
 *GEO. T. BLISS, E.Y.C.....1899
 GEO. F. ANDERSON, S.Y.C.....1900
 *WM. R. HUNTINGTON, S.Y.C.....1901
 *C. C. WARREN, S.Y.C.....1902
 *HENRY TRACY, T.Y.C.....1903
 JOHN H. SMEDLEY, D.B.C.Y.....1904
 *GEO. H. WORTHINGTON,
 C.Y.C.1905
 JOHN F. CRAIG, T.Y.C.....1906
 *FRANK W. FLETCHER,
 T.B.Y.A.1907
 *GEO. H. WORTHINGTON,
 C.Y.C.1908
 *S. O. RICHARDSON, JR., T.Y.C.....1909
 C. G. JENNINGS, C.C. of D.....1910

*ALEXANDER WINTON, L.Y.C.....1911
 *WM. R. HUNTINGTON, S.Y.C.....1912
 *GEO. H. WORTHINGTON,
 C.Y.C.1913
 HENRY W. HESS, T.Y.C.....1914
 HARRY C. KENDALL, D.Y.C.....1915
 EMIL G. SCHMIDT, S.Y.C.....1916
 ALEXANDER WINTON, C.Y.C.....1917
 *WM. R. HUNTINGTON, S.Y.C. 1918
 R. GEORGE MARSH, G.P.Y.C.....1919
 F. W. WAKEFIELD, V.B.C.....1920
 *F. W. ROBERTS, C.Y.C.....1921
 C. W. KOTCHER, D.Y.C.....1922
 SIDNEY FROHMAN, S.Y.C.....1923
 OTTO F. BARTHEL, D.Y.C.....1924
 *THOS. A. DEVILBISS, T.Y.C.....1925
 A. A. SCHANTZ, D.Y.C.....1926
 DR. W. A. WILSON, B.Y.C.....1927
 E. H. REED, T.Y.C.....1928
 MARK R. HANNA, D.Y.C.....1929
 E. E. NOBLE, C.Y.C.....1930
 A. F. WAKFIELD, V.B.C.....1931

*Deceased.

SEA SCOUTS

Again we are fortunate to have the Sea Scouts with us at the Regatta. Those of us who attended last year remember the splendid service which they rendered to the yachtsmen and to the officers at that time. This year the encampment is even larger, and we expect even finer co-operation than we received a year ago.

The Inter-Lake is offering a trophy to the Sea Scout Ship having the best record during the encampment. We hope this will stimulate interest among the different organizations. This trophy is to be based on co-operation, discipline and general all-around Sea Scout ability.

ESMUND AVERY,

Secretary, I. L. Y. A.

The **Greatest**
All-Purpose
Outboard Motor
Ever Built \$ **79⁰⁰**

IT'S a great outboard motor—this Caille "79". Just the motor for the sportsman—ideal for hunting and fishing. Light—weighs only 34 lbs. Powerful—develops 4 h. p. Drives a heavy rowboat 8 to 9 miles per hour—planes a speed dink 16 m. p. h. Model "79" is the world's leading low-priced motor—a quality product backed by a quality name. See it—test it. It's yours on our 5-day free trial.

CAILLE MOTOR CO.

6200 Second Blvd. Detroit, Mich.

▼ ▼ Power Boat Racing Rules ▼ ▼

- Entries for all Power Boat races must be filed at Inter-Lake Yachting Association headquarters before July 5, 1932, at 6:00 P. M.
- All boats shall be measured by an accredited measurer of the A. P. B. A., their home club measurer, or the Inter-Lake Yachting Association power boat measurer. Boats not measured before their arrival at Put-In-Bay shall be reported at Inter-Lake headquarters. The owner's name, boat's name, measuring fee, and anchorage shall be given to the secretary, so that the measurer can locate the boat readily.
- Certificates of measurement must be filed with entries and the Regatta Committee reserves the right to remeasure at its option.
- Races for each class shall consist of three heats.
 First heat. A. P. B. A. handicap racing rules or declared time with 5% leeway and penalty as provided in said rules.
 Second heat. Handicapped according to time of first heat. Any boat finishing ahead of actual elapsed time of first heat in excess of 5% to be penalized double the amount of excess over 5% in figuring the corrected time for second heat.
 Third heat. Handicapped according to the best elapsed time of the two previous heats. Any boat finishing ahead of best elapsed time of two previous heats to be penalized double the amount of time over the 5% allowable excess in figuring the corrected time for third heat. The second and third heats will be a handicap race with the limit boat starting first.
- All boats in a class in the first heat will start at the same time and handicaps allowed by allowing time against the corrected time.
- Points for finish position will be awarded according to the Rule XXIX of the A. P. B. A. as follows:

First boat to finish.....400 Points	Seventh boat to finish.....196 Points
Second boat to finish.....361 Points	Eighth boat to finish.....189 Points
Third boat to finish.....324 Points	Ninth boat to finish.....144 Points
Fourth boat to finish.....289 Points	Tenth boat to finish.....121 Points
Fifth boat to finish.....256 Points	Eleventh boat to finish.....100 Points
Sixth boat to finish.....225 Points	Twelfth boat to finish..... 81 Points
- The Committee reserves the right to require a minimum of three boats to constitute a race.
- The boat making the most points in the three scheduled heats will be declared the winner unless, of course, it has been disqualified for infraction of rules.
- Starting times for all handicapped boats will be posted at headquarters before the race.
- In general the racing rules of the A. P. B. A. will hold.
- Summary: These rules have been drawn up, and their sole intent is to minimize as much as possible all differences in boat speeds, and to make seamanship and consistent performance the deciding factors.

**. . . TROPHIES . . .
PRIZES . . . GIFTS**

To the Winner—the Prize. Long after the contest is forgotten the victor will cherish the trophy. That it may be worthy of the event we have a complete selection in a wide range of design and price for every branch of sport.



Compliments of
American Sterilizer Co.
Eric, Pennsylvania

"Jim's is a Good Place to Eat"

Very Reasonable Prices

Put-in-Bay Cafeteria

Lunch Counter in Connection

Lunches at All Hours

JAMES A. POULOS, Prop.
PUT-IN-BAY, O.

WEISGERBER

Paint & Varnish Co.
28 East Larned St.
Detroit

For Immediate Delivery

Edw. Smith's Paints
Climax Marine Finishes
Other Time-Tested Brands

We are Agents for
Narragansett Fittings
Merriman Bros. Fittings
Ratsey-Laphorn Sails
Dyer Sailing Dinks
Nycord Linen Line
Swedish Square Meter Yachts

▼ ▼ **Entertainment** ▼ ▼

ENTERTAINMENT COMMITTEE

JOE KROLIK, D. B. C., Chairman

JOE NAGEL, E. B. C.

FRED COMPTON, E. B. C.

J. J. DAY, P. I. B. Y. C.

All social affairs this year will be informal and the committee has kept costs down so that everyone at the regatta can attend the events, which include a get-together dinner, hard times party, boxing show, swimming contests and Venetian night. There will also be arranged golf and bowling tournaments. See bulletin board. Reservations for the ladies' bridge party must be made not later than Tuesday.

General Insurance

Marine Insurance

**"AL" GROSS
B. Y. C.**

Cadillac Ins. Agency, Inc.
Asst. Mgr.

1624 First National Bank Bldg.,
Detroit

Telephone Fitzroy 0624

THOMAS HARDWARE COMPANY
For Yacht Supplies

1003 Baldwin Ave.

Detroit

GREAT LAKES BOATING HEADQUARTERS

For

NEW AND USED BOATS

Distributor for

HALL-SCOTT and UNIVERSAL MOTORS DODGE RUNABOUTS
ROBINSON SEAGULLS PENN YAN DINGHIES
a. c. f. CRUISERS CENTURY OUTBOARD BOATS
MARINE ACCESSORIES

Complete Brokerage Files on All Types of Used Boats

LEONARD THOMSON, INC.
500 E. JEFFERSON AVE. DETROIT, MICHIGAN

MARINE SUPPLIES, HARDWARE, SPORTING GOODS, GALENA
OILS, OUTBOARD AND INBOARD MOTORS, CRUISERS,
RUNABOUTS, OUTBOARD RACING CRAFT

Marine Motor Super-Service

GREAT LAKES CORPORATION

7633 Jefferson East, Detroit Opposite Naval Armory

BALLANTYNE AND TREGO

General Insurance

2311 DIME BANK BLDG.

DETROIT

A. M. CREED & CO.

Marine Insurance

PENOBSCOT BLDG.

DETROIT

Yachtsmen and Motor Boat Owners, wherever located
may secure a worthwhile service from men experienced
in the operation of pleasure craft.

HERBSTER BROS.

Gift and Kodak Shop

Novelties, Curios, Jewelry and Post Cards—Photo and Kodak Supplies

Opposite Fountain in Perry Park

GOLD CUP KENNELS

Conditioning, Handling

ALL BREEDS

Individual Runs

No Sick Dogs Admitted

Steam Heated

We Specialize in Stripping and Trimming

A. H. AND G. I. SCHUMAN

Owners



*May We Select
Your Next Dog*

Tel. Utica 29-F-43

18-Mile Rd. and Van Dyke

Utica, Mich.

▼ ▼ Aviation Program ▼ ▼

AVIATION COMMITTEE

HUBERT H. HALL, E. Y. C., Chairman

WALTER X. BRENNAN, B. Y. C.

HOWARD FISH, E. Y. C.

THOMAS B. COLBY, D. B. C.

WILLIAM A. WARRICK, JR., C. Y. C.

HUGH BENNETT, T. Y. C.

Two airplane cruises will start for the Regatta at 10 a. m., July 7, one leaving Cleveland Municipal Airport under direction of William A. Warrick, Jr., and the other from Detroit City Airport, under Walter X. Brennan. Flying boats will start at convenient points at the same time. The flights will follow the shore to Catawba point, thence to Put-In-Bay Airport. Pilots will have lunch at the Bay View House and then compete for prizes in golf and sailing. The cruise will disband on the following morning. Reservations to accompany the cruise must be made in advance.

▼ ▼ Outboard Program ▼ ▼

OUTBOARD COMMITTEE

A. R. HACKETT, D. Y. C., Chairman

WILLIAM LYMAN, S. Y. C.

KARL BATES, S. Y. C.

Outboard races for displacement boats only will be arranged in three classes. First, second and third prizes will be awarded, subject to rule in General Information.

Races for the following classes will be run:

Class B—Including 14 cu. in. and under 20 cu. in.

Class C—Including 20 cu. in. and under 30 cu. in.

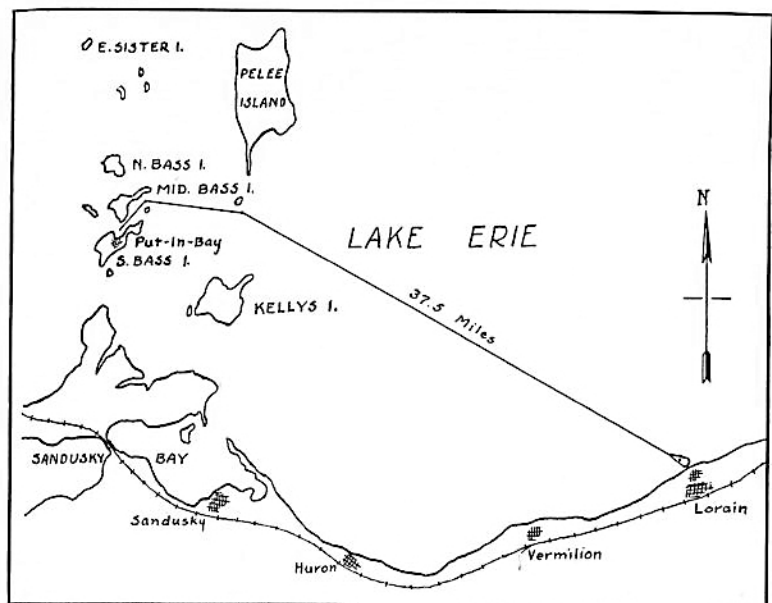
Free-for-all—Any size motor.

Date and time of outboard events will be announced on the Bulletin Board at Headquarters or information may be had by wire to Headquarters.

Entrants must comply with I. L. Y. A. requirements and races will be run under 1932 Rules of the National Outboard Association.

▼ ▼ Broadcasting ▼ ▼

The broadcasting at this year's regatta is entirely through the courtesy of Berry Brothers, Inc.



Course of the Inter-Lake Deep Water Race
Put-in-Bay to Lorain, Ohio, and Return
Wednesday, July 6, 1932

THIS race is open to any bona-fide cruising yacht. Converted racing yachts, and all other originally and particularly designed for class racing, are expressly barred.

The Race Committee is directed to reject the entry of any yacht which does not conform to the spirit of the cruising classification.

Warning Gun	5:30 P. M.	White Flag
Preparatory Gun	5:45 P. M.	Blue Peter
Starting Gun	6:00 P. M.	Checkered Flag

STARTING LINE. From the Judge's boat to a buoy or flag at right angles from the Judge's boat in a general southeasterly direction.

COURSE AND FINISH. No restrictions on course, except that the start must be according to diagram. The finish is optional, except yacht must finish across the line in the opposite direction of the start.

TURNING MARK. A coast guard boat anchored approximately one mile in a general northwesterly direction from the outer harbor light on Lorain piers. Entrants must call and announce name and racing number of yacht upon rounding mark, leaving same to Port.

TIME LIMIT. After any yacht has finished, the remaining yachts will be allowed 12 hours plus time allowance in which to cross the finish line.

1932 INTER-LAKE YACHTING ASSOCIATION REGATTA PRIZES AND TROPHIES

PRIZE COMMITTEE

W. T. NOACK, D. B. C., Chairman

JOHN HUNTER, V. B. C.

M. J. SHEA, C. Y. C.

H. M. HILL, JR.

DONOR

PRIZE OR TROPHY

WILLIAM BEWICK.....	Chelsea Clock & Barometer Desk Set
LEONARD THOMSON, INC.....	Outboard Life Jacket
HENRY SMITH & Co.....	Fire Extinguisher
A. C. SPARK PLUG Co.....	Set 10 Plugs
LOYD'S REGISTER OF SHIPPING.....	1932 Edition Yacht Register
OLD TOWN CANOE Co.....	Paddle
BAUSCH & LOMB OPTICAL Co.....	Sport Glasses
VERNOR'S	Case of Ginger Ale
CHAS. A. STRELINGER & Co.....	Fire Extinguisher
WAMSUTTA MILLS.....	Set of Pillow Cases and Sheets
THE MATHEWS Co.....	1 Extinguisher and 1 Life Ring
HARRY AUSTIN.....	Traveling Bag
J. C. GOSS Co.....	Set Code Flags
BOYDELL BROTHERS.....	1 gal. Super Spar Varnish
FORBES VARNISH Co.....	Marine Varnish
STEARNS-MCKAY MFG. Co.....	1/2 gal. Marblehead (Emerald Green)
BALTIMORE COPPER PAINT Co.....	4 qts. Regatta Copperbronze
	4 pts. Signal Metal Polish
C. A. WOOLSEY PAINT & COLOR Co.....	Tungspar Varnish & Cawspar 100% Bakelite
GILLESPIE VARNISH.....	Bull-dog Remover
BERRY BROTHERS.....	3 Wagons, Marine Flat White, Berryspar
	Yacht Enamel
EDWARD SMITH & Co.....	3 boxes Assorted Paints and Varnish
TARR & WONSON LIGHTING.....	Red Racing Compound
FOREST CITY PAINT & VARNISH.....	Ripolin Gloss, White
BREINIG BROTHERS.....	Green Bottom
CROWELL CHEMICAL Co.....	Oxford Polish
ENTERPRISE OIL Co.....	2 5-gal. cans Motor Oil
MRS. H. A. PARSONS.....	Cocktail Set.

Compliments of

LINKER-STENSEN

TOURS

Flying Boats for Charter

Put-In-Bay to any Point

For Business or Pleasure

Phone or Address

PHIL KLING

Tuxedo 2-1627

1008 Buckingham Road

Grosse Pointe Park Michigan

INLAND MANUFACTURING Co.....Icebox Flexotray
 PENZOIL Co.....Motor Oil
 MOTOR BOATING.....2 Subscriptions for 1 year each
 YACHTING.....2 Subscriptions for 1 year each
 POWER BOATING.....2 Subscriptions for 1 year each
 SPORTSMAN.....2 Subscriptions for 1 year each
 B. SCHELLENBERG & SONS.....Yachting Cap
 J. L. HUDSON Co.....Blanket
 GREAT LAKES CORP.....Galena Oil
 COM. GEORGE MARSH, G. P. Y. C.....Attendance Flag
 FEDERAL MOGUL CORP.....Order for propeller

Steins have been donated by the following

COM. KENNETH CRITTENDEN, D. B. C.	COM. C. R. HARVEY, C. Y. C.
COM. J. N. KROLIK, D. B. C.	COM. SIDNEY FROHMAN, S. Y. C.
COM. LEW BELLOWS, D. Y. C.	COM. C. O. MINIGER, T. Y. C.
EDISON BOAT CLUB	COM. A. R. HACKETT, D. Y. C.
COM. OTTO BARTHEL, D. Y. C.	COM. A. W. WAKEFIELD, V. B. C.
COM. T. B. FARNSWORTH, B. Y. C.	ESMOND AVERY, B. Y. C.
COM. W. A. WILSON, B. Y. C.	A. S. CLOSE, T. Y. C.
COM. ALGER SHELDON, B. Y. C.	COM. J. J. DAY, P. I. B. Y. C.
COM. GEO. HAAS, L. S. C. C.	COM. GEORGE VOELKNER, D. Y. C.
COM. MINER GREGG, L. S. C. C.	DETROIT BOAT CLUB
COM. A. F. JENNINGS, G. P. C.	COM. C. HAY MURPHY, G. P. P. Y. C.
COM. C. G. JENNINGS, G. P. C.	COM. E. E. NOBEL, T. Y. C.
COM. AARON DERoy, D. Y. C.	

a c f

RICHARDSON AND CHRIS-CRAFT CRUISERS

Distributed by

N. J. SHEA

C. Y. C. Island, Rocky River, Ohio

Put in at our Marine Garage for Gasoline, Oil, Supplies and Repair Work

Reconditioning—Repairing—Building
 SAIL BOATS SPEED BOATS CRUISERS
 MOTORS YACHTS
 Hollow—Spars and Booms—Solid
 POULIOT BOAT WORKS

Foot of Clairepointe Ave.

Detroit, Mich.

Auto Ferry to Put-In-Bay

June 18th to September 12th
 SUMMER SCHEDULE

Lv. Catawba for Put-in-Bay	8:00 A. M.
" " " "	10:30 A. M.
" " " "	1:00 P. M.
" " " "	3:45 P. M.
" " " "	6:00 P. M.

Lv. Put-in-Bay for Catawba	7:00 A. M.
" " " "	9:15 A. M.
" " " "	11:45 A. M.
" " " "	2:30 P. M.
" " " "	5:00 P. M.

HOTEL

COMMODORE

American or European Plan

Mrs. Susie Sands

Complete Boat Service

Boat Supplies

Boat-Motor Repairs

Marine Railway

Winter Storage

CHAS. NEFF

FOOT OF ST. CLAIR

C. J. LYNCH, C. P. A.

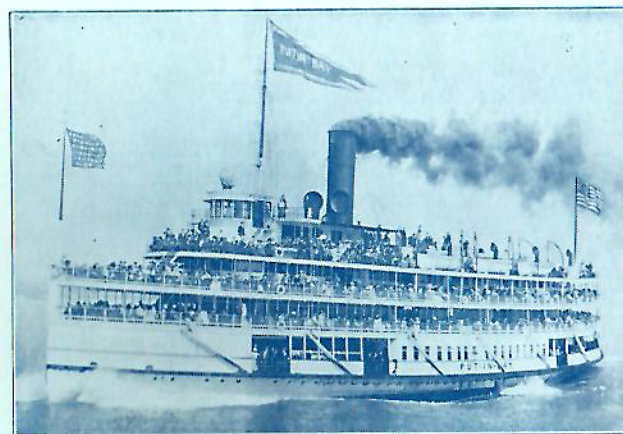
GEORGE L. WALTON, C. P. A.

C. J. LYNCH & CO.

Certified Public Accountants

3214 Eaton Tower

DETROIT, MICH.



STEAMER PUT-IN-BAY

Leaves Detroit 9:30 A. M. Daily except Saturday

Leave at 1:30 P. M.

Dependable Performance



ONE of the first things motor boat owners look for when they purchase a new boat is dependable performance—especially from the electrical system. They want the battery and the starting, lighting and ignition system to function perfectly under all conditions and at all times. That is why every year more and more experienced boat owners are insisting upon the Auto-Lite electrical system and a USL battery when considering the purchase of a new motor boat.

USL BATTERIES
Long Life-Dependable Power

Auto-Lite
Starting, Lighting & Ignition

THE ELECTRIC AUTO-LITE COMPANY, TOLEDO, OHIO