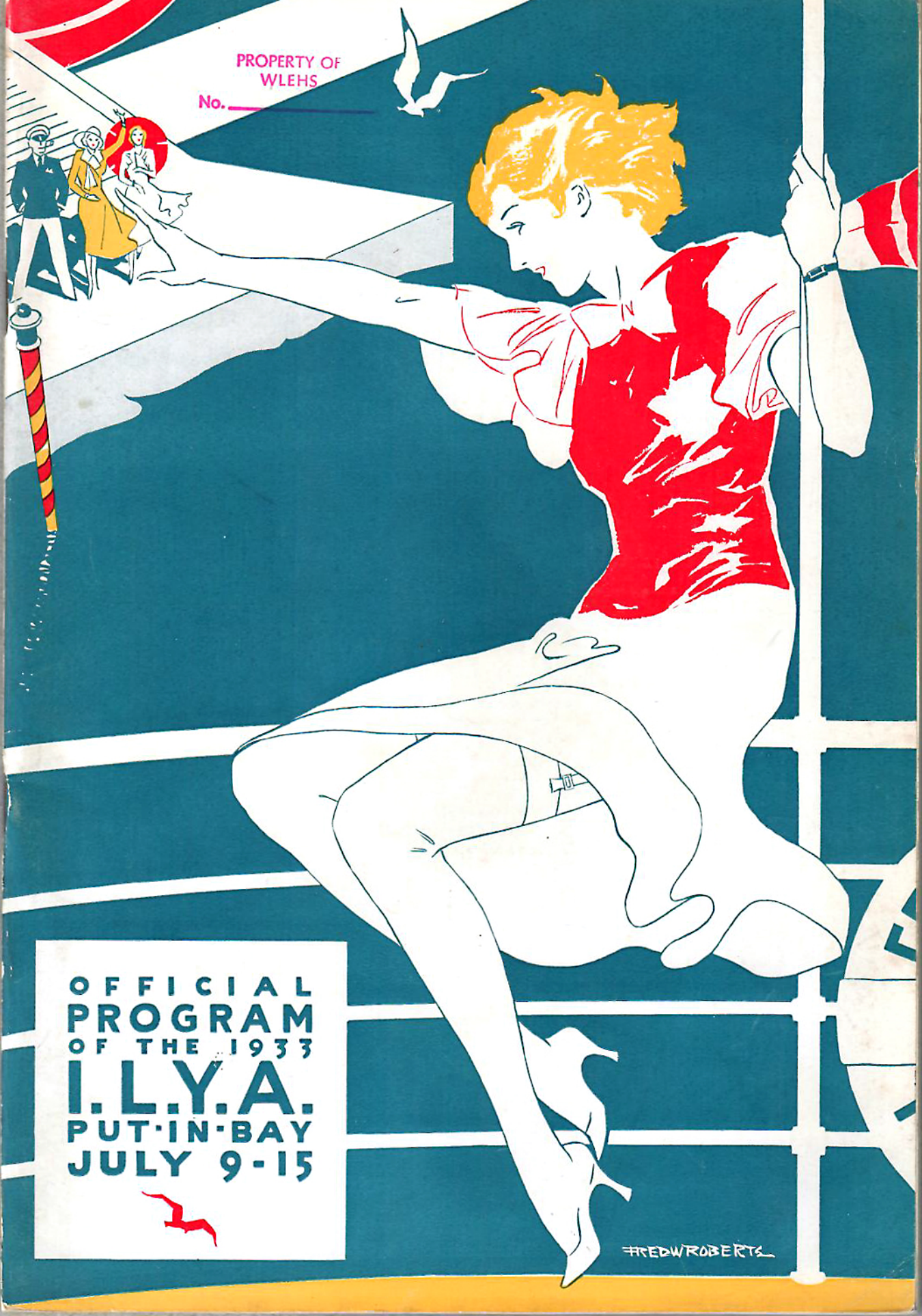


PROPERTY OF
WLEHS

No. _____



OFFICIAL
PROGRAM
OF THE 1933
I.L.Y.A.
PUT-IN-BAY
JULY 9-15



FRED ROBERTS

NEW
DEVILBISS
TYPE MB
SPRAY GUN



with "FEATHER-TOUCH" control

This new, advanced gun makes spray-finishing easier, faster, more economical—produces better results . . . Just a light touch on the trigger, and air pressure automatically releases needle spring tension, eases trigger operation, ends all strain on hand, wrist or forearm . . . Other time tested and proved, patented DeVilbiss features retained and improved . . . Unrestricted air passage; more air in head—better atomization at 10% to 15% lower pressure—smoother, higher quality finishes . . . No increase in price . . . See your local DeVilbiss representative for full details. Or write us direct.

THE DEVILBISS COMPANY, TOLEDO, O.
New York Philadelphia Cleveland Detroit
Chicago St. Louis San Francisco
Windsor, Ontario

Direct sales and service representatives available everywhere

TRADE-IN

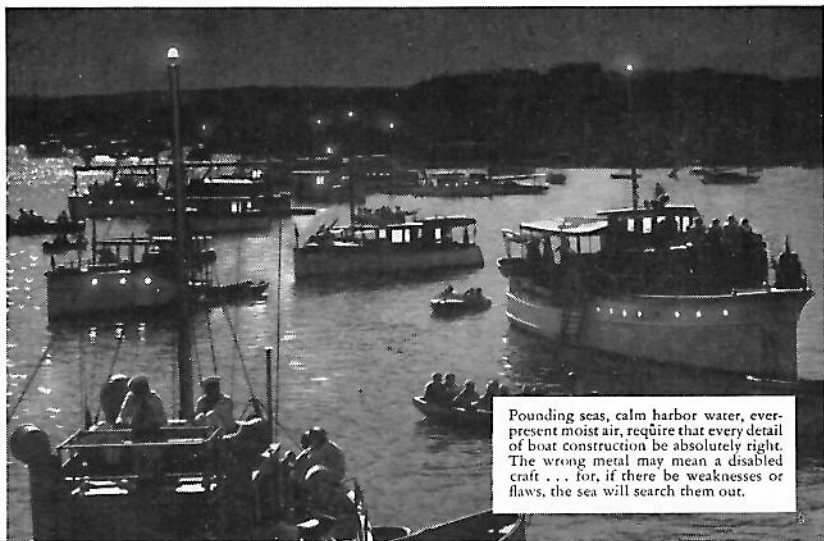
On a new DeVilbiss Type MB, we will, for a limited time, allow \$5.00 on any spray gun you turn in (if it listed at \$25.00 or more when purchased).

DeVilbiss

FILE NO.	PHOTO DATE
TITLE	
PLACE	HELEN BROOKS
WLETHS-COLLECTION	COLLECTION

PROPERTY OF
WLEHS

No. _____



Pounding seas, calm harbor water, ever-present moist air, require that every detail of boat construction be absolutely right. The wrong metal may mean a disabled craft . . . for, if there be weaknesses or flaws, the sea will search them out.

Anaconda Metals make boats last longer”

WHEN you buy or build a boat, remember this: That leading naval architects . . . after long experience with many different metals offered for marine use . . . are unanimous in the opinion that “Anaconda metals make boats last longer.”

For instance: Tobin Bronze* . . . since 1885 the industry’s overwhelming choice for propeller shafting. Everdur* Metal . . . considered ideal for strong, corrosion-

resisting fastenings. Anaconda Nickel Silver for trim and fittings. And Anaconda Copper, Brass and Bronze for a hundred uses, from cutwater to rudder.

Upon the metals used in its construction depend to a great extent the permanent good appearance and dependable performance of any boat. Proof that “Anaconda metals make boats last longer” is given in an interesting booklet, free upon request.

*Trade Marks Reg. U. S. Pat. Off



THE AMERICAN BRASS COMPANY

General Offices: Waterbury, Connecticut

Offices and Agencies in Principal Cities

In Canada: ANACONDA AMERICAN BRASS LTD., New Toronto, Ont

ANACONDA COPPER & BRASS



Matthews installs **MONEL METAL SHAFTS**

● Buyers of Matthews cruisers frequently want their boats equipped with motors higher-powered than the standard power plant. Whenever this happens, Matthews always equips the craft with a Monel Metal Shaft. Years of building fine, fast seaworthy cruisers have convinced Matthews that Monel Metal Shafts can be relied on to deliver smooth, trouble-free performance under the extra stress of added power and higher speed. Whether your boat is powered for speed, or plain, solid comfort, you will find that a Monel Metal Shaft will save you money and add to your comfort afloat. Monel Metal Shafts are strong, rigid and durable. Their great strength and rigidity fortify them against heavy impacts from flotsam—against bending and breakage. They polish in with a lustrous surface that minimizes friction, and their perfect straightness helps to eliminate vibration. Since they are a solid Nickel alloy, Monel Metal Shafts are rust-proof and highly resistant to corrosion. They never pit or cause excessive bearing wear. Now—while your boat is “up” for the winter—is the time to have her fitted with a Monel Metal Shaft. Or, when you buy a new boat, be sure she’s equipped with one of these long-wearing shafts. They are standard on the leading cruisers and runabouts.

The same properties that make Monel Metal so valuable for propeller shafts, also make it the ideal metal for many other marine parts and fittings. Monel Metal is available in the following shapes and forms: sheets tubing strip wire rope wood screws nails rivets bolts and nuts lag screws etc. Have your next boat put together with Monel Metal fastenings.

The International Nickel Company, Inc.
67 Wall Street **New York, N. Y.**



THE TOLEDO EDISON
COMPANY

EXTENDS GREETINGS

to the

INTER-LAKE YACHTING
ASSOCIATION





... Hmmm... *what shall we say to yachting people in a program advertisement on TOOTH BRUSHES?*

SEEMS silly just to say "Good wishes for a good regatta." They know we wish them *that*, by our presence in the Program. Well . . . let's see . . . might call attention to the sea-worthiness of this famous toothbrush—with its tight-sealed, germ-proof glass tube, and its water-proofed bristles that do not grow soggy when wet. But no; let's just remind them that this is the finest tooth brush which skill and modern knowledge can produce. And that, because of its correct design and its water-proofed premium-quality bristles, it cleans and brightens teeth *60% better and faster than any past toothbrush could.*

The **New Dr. West's**

Toothbrush

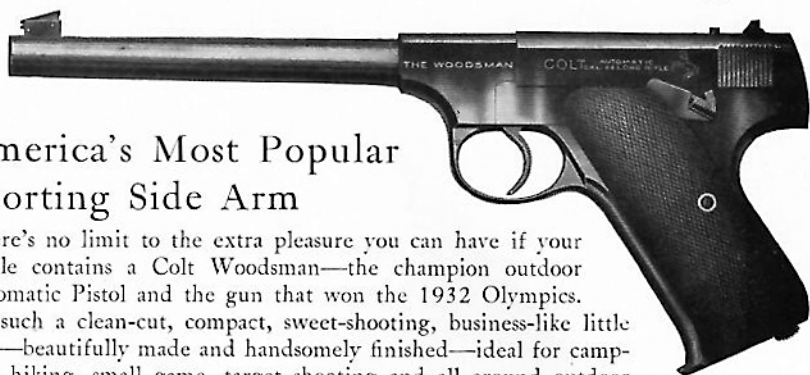
COLT

SPECIFICATIONS—Long 6½" barrel. Length overall 10½". Ten shot magazine. Adjustable, non-reflecting target sights. Distance between sights 9". Smooth action. Checked Walnut Stocks. Grooved trigger. Full blued finish. Weight 28 ounces.

COLT'S PATENT FIRE ARMS MFG. Co.
Fire Arms Division - - Hartford, Conn.

WOODSMAN

AUTOMATIC PISTOL, Caliber .22 Long Rifle



America's Most Popular Sporting Side Arm

There's no limit to the extra pleasure you can have if your duffle contains a Colt Woodsman—the champion outdoor Automatic Pistol and the gun that won the 1932 Olympics. It's such a clean-cut, compact, sweet-shooting, business-like little gun—beautifully made and handsomely finished—ideal for camping, hiking, small game, target shooting and all around outdoor use. *It is America's most popular sporting side arm.*

The Outstanding PLASTICS INSTITUTION in the Country

MOULDING IN

COLTROCK—COLTROCK SUPREME—DUREZ—BAKELITE—PLASKON—
BEETLE—ETC.

AUTOMOTIVE IGNITION PARTS

CLOSURES FOR TIN, GLASS AND OTHER CONTAINERS

CONTAINERS FOR PHARMACEUTICAL AND COSMETICS TRADE

SPECIALTIES FOR INDUSTRY IN GENERAL

BUTTONS, BUCKLES AND TRIMMING FOR ALL GARMENT TRADES

COLT

Manufacturers of

VULCABESTON SHEET PACKING FOR ALL PURPOSES—MOULDED PACKINGS,
GASKETS AND INSULATION SHEET
BRAKE LINING, SEMI-FLEXIBLE AND RIGID MOULDED FOR
AUTOMOTIVE AND INDUSTRIAL USES

COLT'S PATENT FIRE ARMS MFG. Co.

PLASTICS DIVISION

HARTFORD, CONN.



A New Airway Product

THE AERIEET AIR CONDITIONER combines in a single compact unit all the principles and functions of the familiar larger and more expensive air conditioning systems. It can be installed within a wall or beneath a window in an attractive, unobtrusive cabinet connected to the existing heating system. It will cool and dehumidify, filter, wash, temper, humidify and circulate the air in any room and maintain by automatic or manual control a comfortable and healthful temperature.

HEATING DIVISION

AIR-WAY ELECTRIC APPLIANCE CORPORATION . . . TOLEDO, OHIO

PROGRAM

of the

Inter-Lake Yachting Association



ORGANIZED JANUARY 17, 1885
REORGANIZED MARCH 19, 1894

Member of

YACHT RACING UNION OF THE GREAT LAKES
NORTH AMERICAN YACHT RACING UNION
STAR CLASS YACHT RACING ASSOCIATION
AMERICAN POWER BOAT ASSOCIATION
AMATEUR ATHLETIC UNION
CENTRAL ASSOCIATION



C.O. MINIGER, T.Y.C.
Commodore of the I.L.Y.A. 1933



I·L·Y·A

OFFICERS, DELEGATES *and* TRUSTEES



C. O. MINIGER, T. Y. C.....	<i>Commodore</i>
STANLEY GARDNER, C. Y. C.....	<i>Vice Commodore</i>
ALGER SHELDON, B. Y. C. Detroit.....	<i>Rear Commodore</i>
WM. E. LEVIS, T. Y. C.....	<i>Fleet Captain</i>
R. A. LUEDTKE, T. Y. C.....	<i>Secretary-Treasurer</i>
DR. A. R. HACKETT, D. Y. C.....	<i>Fleet Surgeon</i>
FRANK R. FREY, T. Y. C.....	<i>Librarian</i>
P. C. WILLIAMSON, B. Y. C. Detroit.....	<i>Sail Yacht Measurer</i>
E. T. AFFLECK, T. Y. C.....	<i>Power Yacht Measurer</i>

DIRECTORS YACHTSMEN'S FUND

Organized 1916

*COMMODORE F. W. WAKEFIELD, V. B. C., *President*

*COMMODORE SIDNEY FROHMAN, S. Y. C., *Vice-President*

COMMODORE LEE B. KELLER, S. Y. C., *Secretary-Treasurer*

COMMODORE HARRY AUSTIN, D. B. C.

COMMODORE E. H. REED, T. Y. C.

*COMMODORE OTTO F. BARTHEL, D. Y. C.

W. J. BILLINGSLEA, M. R. Y. C.

COMMODORE HENRY HESS, T. Y. C.

WARREN ROBERTS, C. Y. C.

**Trustees*

DELEGATES

American Power Boat Association

COMMODORE JOHN G. ROBINSON, V. Y. C. COMMODORE CHAS. THORNBURGH, S. Y. C.

COMMODORE W. D. EDENBURN, D. Y. C.

YACHT RACING UNION OF THE GREAT LAKES

COMMODORE OTTO F. BARTHEL, D. Y. C.

COMMODORE W. A. WILSON, B. Y. C.

COMMODORE C. G. JENNINGS, D. B. C.

NORTH AMERICAN YACHT RACING UNION

COMMODORE W. A. WILSON, B. Y. C.

COMMODORE R. A. LUEDTKE, T. Y. C.

AMATEUR ATHLETIC UNION

O. R. BENJAMIN, E. B. C.



STANLEY GARDNER, C.Y.C.
Vice Commodore

ALGER SHELDEN, B.Y.C.
Rear Commodore

OFFICERS OF



I.L.Y.A.-1933



R.A. LUEDTKE, T.Y.C.
Secretary-Treasurer

W.E. LEVIS, T.Y.C.
Fleet Captain

ASSOCIATION MEMBERSHIP

<p>BAYVIEW YACHT CLUB OF DETROIT BAYVIEW YACHT CLUB OF TOLEDO BUCKEYE LAKE YACHT CLUB, COLUMBUS BUFFALO CANOE CLUB BUFFALO YACHT CLUB CLEVELAND METROPOLITAN YACHTING ASSO. CLEVELAND YACHTING CLUB CORINTHIAN YACHT CLUB, DETROIT CRESCENT SAIL YACHT CLUB, DETROIT DETROIT BOAT CLUB DETROIT YACHT CLUB EDGEWATER YACHT CLUB, CLEVELAND EDISON BOAT CLUB, DETROIT ERIE YACHT CLUB GROSSE POINTE YACHT CLUB, DETROIT GULL LAKE YACHT CLUB, BATTLE CREEK</p>	<p>LAKE SHORE YACHTSMEN CLUB, DETROIT LAKESIDE YACHT CLUB, CLEVELAND LORAIN YACHT CLUB MAUMEE RIVER YACHT CLUB, TOLEDO MISS DETROIT POWER BOAT ASS'N., DETROIT MONROE YACHT CLUB OTTAWA RIVER YACHT CLUB, TOLEDO PORT CLINTON YACHT CLUB PUT-IN-BAY YACHT CLUB RIVERSIDE BOAT CLUB, TOLEDO SAGINAW BAY YACHT CLUB, BAY CITY, MICHIGAN SANDUSKY YACHT CLUB SARNIA YACHT CLUB, ONTARIO, CANADA TOLEDO YACHT CLUB VERMILION BOAT CLUB VERMILION YACHT CLUB</p>
---	--

PAST COMMODORES

<p>*GEO. W. GARDNER, C. Y. C. 1894 *JOHN E. GUNCKEL, T. Y. C. 1895 *GEO. H. WORTHINGTON, C. Y. C. 1896 *S. O. RICHARDSON, T. Y. C. 1897 *ALEX I. McLEOD, D. Y. C. 1898 *GEO. T. BLISS, E. Y. C. 1899 GEO. F. ANDERSON, S. Y. C. 1900 *WM. R. HUNTINGTON, S. Y. C. 1901 *C. C. WARREN, S. Y. C. 1902 *HENRY TRACY, T. Y. C. 1903 JOHN H. SMEDLEY, D. B. C. Y. 1904 *GEO. H. WORTHINGTON, C. Y. C. 1905 JOHN F. CRAIG, T. Y. C. 1906 *FRANK W. FLETCHER, T. B. Y. A. 1907 *GEO. H. WORTHINGTON, C. Y. C. 1908 *S. O. RICHARDSON, T. Y. C. 1909 C. G. JENNINGS, C. C. of D. 1910 *ALEXANDER WINTON, L. Y. C. 1911 *WM. E. HUNTINGTON, S. Y. C. 1912 *Deceased.</p>	<p>*GEO. H. WORTHINGTON, C. Y. C. 1913 HENRY W. HESS, T. Y. C. 1914 HARRY C. KENDALL, D. Y. C. 1915 EMIL G. SCHMIDT, S. Y. C. 1916 *ALEXANDER WINTON, C. Y. C. 1917 *WM. R. HUNTINGTON, S. Y. C. 1918 R. GEORGE MARSH, G. P. Y. C. 1919 F. W. WAKEFIELD, V. B. C. 1920 *F. W. ROBERTS, C. Y. C. 1921 C. W. KOTCHER, D. Y. C. 1922 SIDNEY FROHMAN, S. Y. C. 1923 OTTO F. BARTHEL, D. Y. C. 1924 *THOS. A. DEVILBISS, T. Y. C. 1925 A. A. SCHANTZ, D. Y. C. 1926 DR. W. A. WILSON, B. Y. C., DETROIT. . . 1927 E. H. REED, T. Y. C. 1928 MARK R. HANNA, D. Y. C. 1929 E. E. NOBLE, C. Y. C. 1930 A. F. WAKEFIELD, V. B. C. 1931 J. W. VAUGHAN, D. B. C. 1932</p>
--	---

ADVISORY COMMITTEE

COMMODORE E. H. REED, T. Y. C., *Chairman*

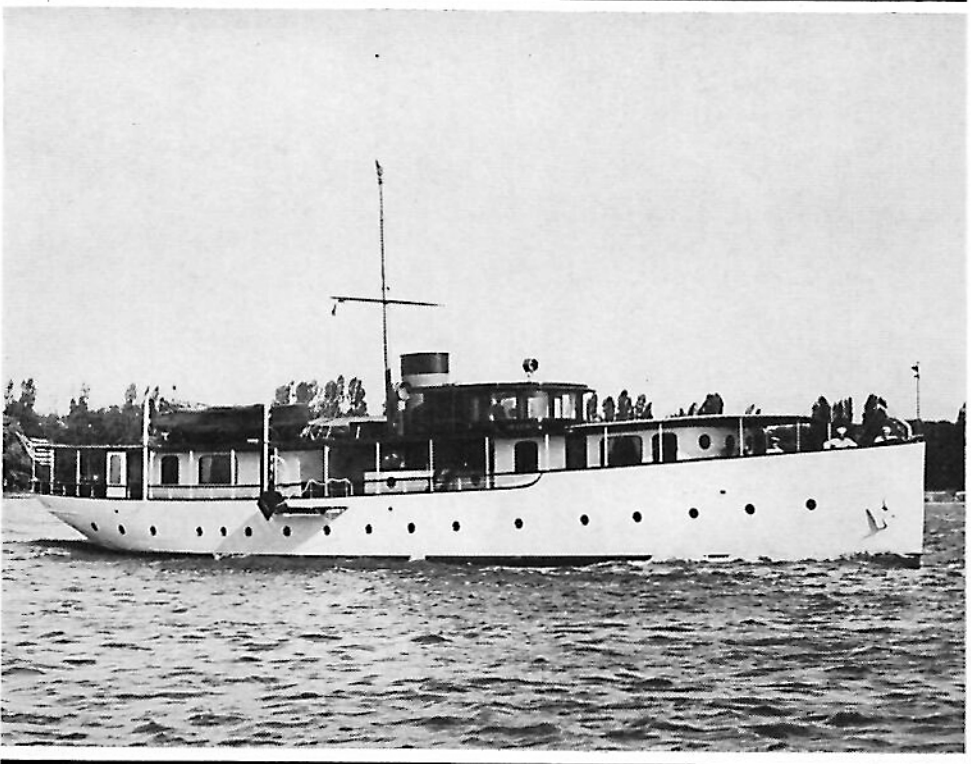
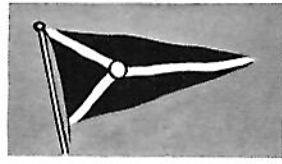
<p>COMMODORE GEO. F. ANDERSON, S. Y. C. COMMODORE JOHN H. SMEDLEY, D. B. C. COMMODORE JOHN F. CRAIG, T. Y. C. COMMODORE C. G. JENNINGS, D. B. C. COMMODORE HENRY HESS, T. Y. C. COMMODORE HARRY C. KENDALL, D. Y. C. COMMODORE EMIL G. SCHMIDT, P. Y. C. COMMODORE R. GEO. MARSH, G. P. Y. C. COMMODORE F. W. WAKEFIELD, V. B. C.</p>	<p>COMMODORE C. W. KOTCHER, D. Y. C. COMMODORE SIDNEY FROHMAN, S. Y. C. COMMODORE OTTO F. BARTHEL, D. Y. C. COMMODORE A. A. SCHANTZ, D. Y. C. COMMODORE W. A. WILSON, B. Y. C. COMMODORE MARK R. HANNA, D. Y. C. COMMODORE E. E. NOBLE, C. Y. C. COMMODORE A. F. WAKEFIELD, V. B. C. COMMODORE J. W. VAUGHAN, D. B. C.</p>
---	--

SAIL YACHT REGATTA

P. J. KNAPP, T. Y. C., *Chairman*

RAY R. DALEY, D. Y. C., *Vice Chairman*

<p>HAROLD HALL, E. Y. C. ARTHUR DAVIS, T. Y. C. A. B. HEAVENRICH, D. Y. C. COMMODORE BERT KNAPP, M. Y. C.</p>	<p>COMMODORE MINER GREGG, D. Y. C. MILTON KNIGHT, T. Y. C. TED NOACK, D. B. C. COMMODORE HUGH GUNNISON, D. Y. C.</p>
--	---



HELENE

FLAGSHIP OF THE
INTERLAKE YACHTING
ASSOCIATION · 1933



SAIL YACHT JUDGES

COMMODORE E. T. AFFLECK, T. Y. C., *Chairman*

COMMODORE F. W. WAKEFIELD, V. B. C., *Vice-Chairman*

COMMODORE OTTO F. BARTHEL, D. Y. C.

COMMODORE C. R. HARVEY, C. Y. C.

COMMODORE A. F. JENNINGS, D. B. C.

COMMODORE HARRY C. KENDALL, D. Y. C.

COMMODORE W. A. WILSON, B. Y. C.

COMMODORE HARRY BISGOOD, B. C. C.

SAIL YACHT RULES

A. J. GRUNDY, D. Y. C., *Chairman*

COMMODORE JOS. KROLIK, D. B. C.

COMMODORE W. A. WILSON, B. Y. C.

COMMODORE OTTO F. BARTHEL, D. Y. C.

COMMODORE R. A. LUEDTKE, T. Y. C.

RICHARD FOOTE, T. Y. C.

POWER BOAT REGATTA

LOUIS EHRLICH, T. Y. C., *Chairman*

COMMODORE C. A. THORNBURGH, S. Y. C., *Vice-Chairman*

FRANK J. GERDEN, E. Y. C.

DR. A. R. HACKETT, D. Y. C.

FORREST PALMER, T. Y. C.

ED. LITTEN, M. R. Y. C.

N. J. SHEA, C. Y. C.

CLAUDE LYTLE, O. R. Y. C.

JULIUS MORGAN, B. Y. C.

COMMODORE JNO. H. COX, C. M. Y. A.

COMMODORE WM. V. MEYER, C. Y. C.

POWER BOAT JUDGES

COMMODORE JOHN G. ROBINSON, V. Y. C., *Chairman*

COMMODORE J. A. TALLMAN, T. Y. C., *Vice-Chairman*

COMMODORE HENRY HESS, T. Y. C.

COMMODORE EARL SHANTEAU, O. R. Y. C.

COMMODORE E. E. NOBLE, C. Y. C.

COMMODORE SAM MORRIS, M. Y. C.

POWER BOAT RULES

COMMODORE JOHN G. ROBINSON, V. Y. C., *Chairman*

W. D. EDENBURN, D. Y. C.

COMMODORE HUGH GUNNISON, D. Y. C.

COMMODORE OTTO F. BARTHEL, D. Y. C.

MODEL YACHT COMMITTEE

HARRY A. MILLER, D. Y. C., *Chairman*

DEL HEINLE, T. Y. C.

CLARENCE VINCENT, D. M. Y. C.

PATROL COMMITTEE

COMMODORE W. A. WILSON, B. Y. C., *Chairman*

WALTER WOBSEY, M. R. Y. C.

COMMODORE L. F. A. BELLOWS, D. Y. C.

HOWARD ICKES, T. Y. C.

ENTERTAINMENT COMMITTEE

A. M. SCHMIT, T. Y. C., *Chairman*

DR. PAUL KUEBLER, T. Y. C., *Vice-Chairman*

FRANK R. FREY, T. Y. C., *Vice-Chairman*

EARL AIKEN, T. Y. C.

DR. J. L. BLOOMHART, T. Y. C.

GEORGE BLAINE, L. S. Y. C.

COMMODORE GEORGE DOANE, E. B. C.

COMMODORE MILTON GALLUP, C. Y. C.

JOHN HUNTER, V. B. C.

COMMODORE LEE KELLER, S. Y. C.

EDW. H. LRYDORF, M. R. Y. C.

COMMODORE JULIUS MORGAN, B. Y. C.

COMMODORE GEO. PIERCE, B. L. Y. C.

C. P. REYNOLDS, T. Y. C.

RAY SMITH, V. B. C.

LAKE TURNER, M. R. Y. C.

GEORGE WAKEFIELD, V. B. C.

ED. ZERBE, D. Y. C.

YOU SHOULD HAVE L·O·F SUPER SAFETY GLASS IN YOUR BOAT AS WELL AS IN YOUR CAR



Safety Glass is the greatest available protection against the ugly cuts that come from broken, flying glass and the humiliating scars such cuts so often leave. Wherever there is GLASS . . . in any form of transportation . . . it should be SAFETY GLASS. Specify it, when you buy a new boat, or, if

you are putting into commission a craft that has ordinary glass, call the L·O·F distributor listed in the "Where to Buy It" section of your telephone directory. He will give you the name of a nearby replacement dealer who will quote you prices on super Safety Glass specially fitted to it.

L·O·F super Safety Glass is now used, in the marine field, by Gar Wood Boats, Matthews Cruisers and Chris-Craft Cruisers and Runabouts as well as by many custom boat builders.

LIBBEY·OWENS·FORD GLASS COMPANY, TOLEDO, OHIO



LIBBEY·OWENS·FORD SAFETY GLASS

LADIES ENTERTAINMENT

MRS. R. A. LUEDTKE, T. Y. C., *Chairman*
MRS. E. H. REED, T. Y. C., *Vice-Chairman*

MRS. J. B. BELL, T. Y. C.
MRS. T. A. DEVILBISS, T. Y. C.
MRS. F. W. ROBERTS, C. Y. C.

MRS. F. B. PARSONS, V. Y. C.
MISS FLORENCE WILSON, B. Y. C.

SQUADRON SAIL

COMMODORE AUGUST BENHOFF, T. Y. C., *Chairman*
RALPH WIRE, T. Y. C., *Vice-Chairman*

L. E. JEANNERET, T. Y. C.

LAKE TURNER, M. R. Y. C.

AVIATION COMMITTEE

HERBERT H. HALL, E. Y. C., *Chairman*
WALTER X. BRENNEN, B. Y. C., *Vice-Chairman*

CHAS. SCHULTZ, T. Y. C.
JOE McDUFFY, T. Y. C.
HUBERT BENNETT, T. Y. C.

H. J. COOPER, G. L. Y. C.
DUANNE STRANAHAN, T. Y. C.
ALFRED KOCH, T. Y. C.

OTHER SPORTS COMMITTEE

TOM VANSICKLE, D. Y. C., *Chairman*
O. R. BENJAMIN, E. B. C., *Vice-Chairman*

WM. K. McCOOL, T. Y. C.
GEO. E. VAN, D. Y. C.
CHAS. F. FAST, B. L. Y. C.

C. MORGAN, T. Y. C.
MINER GREGG, D. Y. C.

TROPHY COMMITTEE

COMMODORE J. W. KOEHRMAN, T. Y. C., *Chairman*

COMMODORE W. F. BROER, T. Y. C.
COMMODORE HARRY LARKIN, B. Y. C.
COMMODORE E. E. NOBLE, C. Y. C.

COMMODORE CHAS. KOTCHER, D. Y. C.
COMMODORE SIDNEY FROHMAN, S. Y. C.

PROGRAM COMMITTEE

COMMODORE E. H. REED, T. Y. C., *Chairman*

J. L. GRUBER, T. Y. C.
CHAS. BOWERS, T. Y. C.
ED. TIBBETT, T. Y. C.

WALTER X. BRENNAN, B. Y. C.
HOWARD ICKES, T. Y. C.

PUBLICITY COMMITTEE

FRANK SKELDON, T. Y. C., *Chairman*, Toledo Blade

EARL AIKEN, T. Y. C., Toledo Blade
GEO. E. VAN, D. Y. C., Detroit Times
PAUL SHRADER, Toledo Times
DICK MEAD, Toledo News Bee

HARRY DULUC, Detroit News
JOHN G. ROBINSON, POWER BOATING
W. F. RAPPICH, Cleveland Plain Dealer
W. W. EDGAR, Detroit Free Press

PRIZE DISTRIBUTION

COMMODORE J. W. KOEHRMAN, T. Y. C., *Chairman*

COMMODORE W. F. BROER, T. Y. C.
COMMODORE A. F. WAKEFIELD, V. B. C.

COMMODORE AUG. BENHOFF, T. Y. C.
COMMODORE HARRY AUSTIN, D. B. C.



HORACE E. DODGE BOAT AND PLANE CORPORATION
 VIRGINIA
 NEWPORT NEWS



WILLIAM M. HORN
 SECRETARY AND TREASURER

National Vulcanized Fibre Co.
 Wilmington, Delaware

Attention: Mr. J. S. Tatnell

Dear Mr. Tatnell:

You are probably aware of the fact that we used Aqualite Bearings on the DELPHINE IV in winning both the Gold Cup at Montauk and the President's Cup at Washington, and I do not believe that a bearing of any kind could have been put to a more severe and gruelling test.

The power transmitted through this bearing was 400 h.p. and the shaft turned at 3500 r.p.m., and upon inspection of these bearings after the races we found that the wear was practically negligible.

This test proved conclusively to us that these are bearings of considerable merit and it might interest you to know that we are now standardizing on the Aqualite bearing in our new 16' Utility Model.

I want to take this opportunity of congratulating your company on the development of this bearing and also to thank you for your cooperation with us.

Yours very truly,

HORACE E. DODGE BOAT & PLANE CORP.

W. M. Horn
 W. M. Horn
 Secretary and Treasurer

WME/T

What Metal?

Here are five trade marks, each identifying a grade of iron or steel sheets for a particular purpose. They are the symbol of high quality and uniformity. GLOBE Brand Black and Galvanized Sheets—high grade steel sheets for every conceivable purpose.

GOHI Enameling Sheets—highly refined iron sheets for porcelain enamel—universally recognized for enameling qualities.

GOHI pure iron-copper alloy sheets—black and galvanized—the pinnacle of perfection in pure iron sheets with sufficient copper added to insure maximum resistance against corrosion.

Newport Electrical Sheets — silicon steel sheets of known physical and chemical qualities for electrical equipment.

Kentucky Copper Bearing Steel Sheets—black and galvanized—for exposure to weather and water—copper content retards corrosion.

THE NEWPORT ROLLING
 MILL COMPANY
 NEWPORT, KENTUCKY

...we are now standardizing on the Aqualite Bearing in our new 16' utility model"

Faster—because it is practically frictionless. Quieter—because it holds its shape under the severest thrust from high speed. And, not only is it more economical in the end, but its first cost is less than for any other self-cleaning bearing.

Aqualite
 SELF CLEANING BEARING

Made of a dense synthetic material—unaffected by salt, chemical or the filth of congested waterways. Will not dry out or rot during winter storage. Water grooves afford free flow of water, preventing sand or mud from cutting or binding the shaft. Change over to the Aqualite Bearing—then see and feel the difference! If not carried by your shiphandler, write us and we will supply you direct.

NATIONAL VULCANIZED FIBRE CO.
 Wilmington, Delaware Offices in Principal Cities



I. L. Y. A. PRIZES

The Inter Lake Yachting Association is indebted to the following donors for the trophies and other prizes listed, and the Trophy Committee wishes to take this opportunity of thanking these individuals and assure them that the donations are most sincerely appreciated:

SAIL BOAT PRIZES

CLASS "R" UNIVERSAL.....	Com. Sidney Frohman Trophy
CLASS "22 SQ. METER".....	DeVilbiss Co., Trophy
CLASS "A" DIVISION "A".....	Com. C. O. Miniger Trophy
CLASS "A" DIVISION "B".....	Com. C. A. Russell Trophy
CLASS "Y" YAWLS.....	F. D. Stranahan Trophy
CLASS "SCH" SCHOONERS.....	Wm. E. Levis Trophy
CLASS "S" HIGH RIG STARS.....	Com. J. W. Koehrman Trophy
CLASS "S" LOW RIG STARS.....	Com. J. A. Tallman Trophy
CLASS "K" PRIVATE OWNED CAT BOATS.....	John T. Rohr Trophy
CLASS "CK" CLUB OWNED CAT BOATS.....	Com. W. F. Broer Trophy
CLASS "CK" FREE FOR ALL CAT BOATS.....	H. A. Page Trophy
CLASS "CC" CABIN CAT BOATS.....	A. B. Richardson Trophy
CLASS "D" FROSTBITE DINGHY.....	I. L. Y. A. Trophy

POWER BOAT PRIZES

CLASS "A" CRUISERS UNDER 12 MILES.....	Com. E. H. Reed Trophy
CLASS "B" CRUISERS OVER 12 MILES.....	R. A. Stranahan Trophy
CLASS "C" 650 INCH, SPEED BOAT.....	Com. E. B. Gillette Trophy
CLASS "D" "FREE FOR ALL" SPEED BOAT.....	I. L. Y. A. Trophy

SPECIAL SAILING RACES

"LADIES CAT BOAT RACE".....	Com. Chas. W. Kotcher Trophy
"COMMODORE CAT BOAT RACE".....	Com. C. O. Miniger Trophy

COM. R. GEORGE MARSH FLAG

Commodore R. George Marsh will present a flag to the Yacht Club having the largest number of members registered at the Regatta.

OTHER PRIZES

A number of prizes were received too late to list the donors' names. The Trophy Committee wishes to thank all these donors, however, and to let them know that we appreciate their gifts greatly. The committee reserves the right to re-arrange prizes as necessary.

LA SALLE
STEEL
COMPANY



*Dependable
Quality*



General Offices:
CHICAGO, ILL.

SCHENECTADY
VARNISH COMPANY,
INC.
SCHENECTADY, N. Y.



Makers of

INDUSTRIAL VARNISHES
INDUSTRIAL ENAMELS
INSULATING VARNISHES
WIRE ENAMELS
COMPOUNDS

Springs

Their wide-spread
use in industry today
is proof positive
of our uniformity,
high quality and
careful
supervision



THE TIMMS
SPRING COMPANY
ELYRIA, OHIO



Bound Brook
Oil-Less Bearing
Company

BOUND BROOK, N. J.



In Memory of our Past Commodores

GEO. W. GARDNER, C. Y. C.
JOHN E. GUNCKEL, T. Y. C.
GEO. H. WORTHINGTON, C. Y. C.
S. O. RICHARDSON, JR., T. Y. C.
ALEX. I. McLEOD, D. Y. C.
GEO. T. BLISS, E. Y. C.
WM. R. HUNTINGTON, S. Y. C.
C. C. WARREN, S. Y. C.
HENRY TRACY, T. Y. C.
FRANK W. FLETCHER, T. B. Y. A.
ALEXANDER WINTON, C. Y. C.
F. W. ROBERTS, C. Y. C.
THOS. A. DeVILBISS, T. Y. C.

MEMORIAL TROPHIES

for Class "R" Racing

The Captain Louis G. Northrup Memorial Trophy is a cup foundation established by Mrs. Seymore H. Knox, Jr., of Buffalo, and presented to the Inter-Lake Yachting Association in perpetuation of the memory of her father, the late Captain Louis G. Northrup, of the Buffalo

Canoe Club. The deed of gift states that the Cup will be held for one year by the winner instead of the Club. This feature offers an added incentive to personal effort on the part of "R" Class racing devotees.

★ ★ ★

The Parsons Trophy was financed by popular subscription among the yachtsmen of the Inter-Lake, no subscription for more than five dollars being accepted. In presenting the trophy to the Inter-Lake, it was given with the understanding that it was a perpetual, that a replica or plate accompanied by a silk flag would pass to the permanent possession of each year's winner. It was also agreed that no class would be stipulated but that the I. L. Y. A. annually designate the class it was to be raced for.



NORTHROP TROPHY

The
Stackpole
Carbon Co.
of St. Marys, Pa.

Manufacturers of carbon, graphite and metallic brushes for all types of motors, generators, slip rings, magnetos and distributors.

Carbon, copper-graphite and silver-graphite contacts, welding and battery carbons.

Carbon radio resistors, graphite anodes for electrolytic cells and electrodes for electric furnaces.

Carbon crucibles and carbon specialties.

FORMICA

*A Handsome
Decorative
Material*

Formica is a handsome and remarkably durable material for the tops of tables and other furniture; for bath room and kitchen walls, and window sills; for kitchen cabinet tops.

There are 30 handsome and novel colors; also inlays in silver or colored metal.

If you remodel your house, re-furnish it or build a new one, be sure to see Formica.

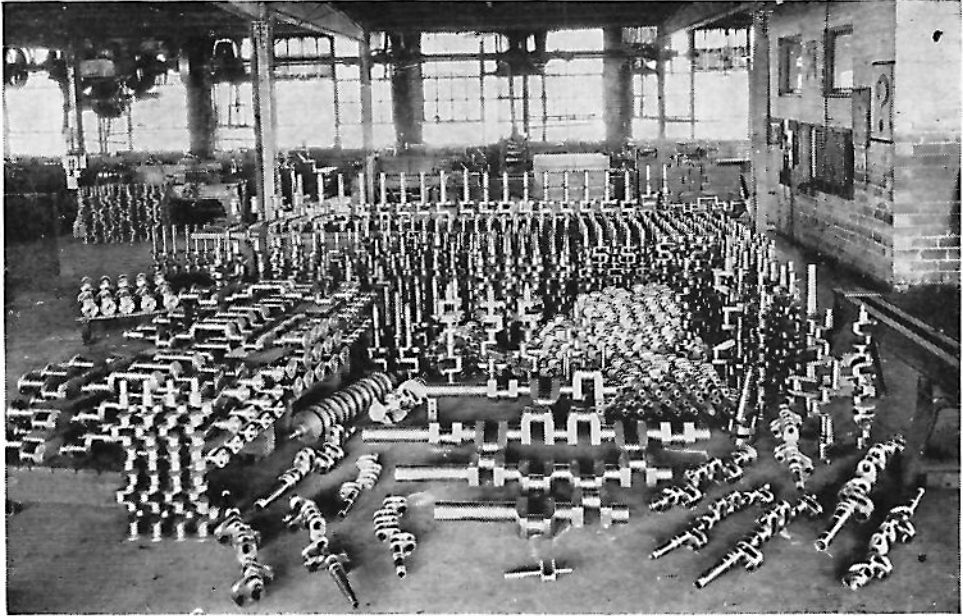
Ask for literature.



THE FORMICA
INSULATION COMPANY

CINCINNATI, OHIO

J. L. GRUBER
District Manager
TOLEDO, OHIO



Union Crankshafts for Precision and Fine Finish

UNION CRANKSHAFTS have been widely approved by the boating, automobile and aircraft industries. They have been adopted for many noted motors where the utmost in quality and performance is paramount to all other considerations.

Our long experience, extensive facilities, continuous production and thorough knowledge of requirements form an admirable basis for manufacturing crankshafts with precision in all details and exceptional finish. Processes are conducted by highest skilled craftsmen under expert supervision. Scrupulous inspection makes certain that specifications are accurately met on each individual unit.

UNION  DRAWN
STEEL COMPANY

BEAVER FALLS, PA.

OFFICIAL PROGRAM

Watch the bulletin board daily for further information

SUNDAY, JULY 9TH

Morning Long distance sail yacht race. Amherstburg to Put-in-Bay. Long distance sail yacht race Toledo to Put-in-Bay. Winton long distance race Rocky River to Put-in-Bay. Star Class Race, Vermilion to Put-in-Bay.
Afternoon Registration at headquarters, Put-in-Bay Yacht Club house.
Evening Services at St. Paul's Church.

MONDAY, JULY 10TH

Morning 9:00 A. M. Organization breakfast at Bay View Hotel. All flag officers and committee chairman are expected to be there promptly.
Afternoon 2:00 P. M. Special sail yacht races. Racing classes.
4:00 P. M. Open house aboard Flagship "Helene" to which all registered yachtsmen and ladies are invited.
Evening 7:00 P. M. Yachtsmen dinner and entertainment. Hotel Crescent. Bring the ladies. Tickets \$1.50 each.

TUESDAY, JULY 11TH

Morning 8:30 A. M. Sail yacht races. All classes.
Afternoon 2:00 P. M. Power Boat races. All classes. See rules for classification.
2:00 P. M. Special sail yacht races. Racing classes.
Afternoon and evening Put-in-Bay Day.
8:45 P. M. Carnival Parade followed by free vaudeville and cabaret dance at Colonial until 10:45 P. M.
See bulletin board at headquarters for details.

WEDNESDAY, JULY 12TH

Morning 8:30 A. M. Sail yacht races. All classes.
Afternoon 2:00 P. M. Power boat races. All classes.
2:00 P. M. Lawn Party at Bayview Hotel for all registered ladies. In case of rain the party will be held at the Golf Club House.
3:00 P. M. Commodore's Cat Boat race.
4:00 P. M. Ladies' Cat Boat race.
6:00 P. M. Start of Deep Water Race to Lorain.
Evening 8:30 P. M. Commodore's Reception and Moonlight ride aboard Str. "Chippewa".

THURSDAY, JULY 13TH

Morning 9:00 A. M. Power Boat races. All classes.
9:00 A. M. Model yacht races.
10:00 A. M. Baseball game. Associated yacht clubs of Toledo vs. Detroit River Yachting Association.
11:00 A. M. Inspection of Airplanes, Put-in-Bay airport.
Afternoon 12:30 P. M. Swimming and diving events at City Dock.
2:30 P. M. Squadron sail.
4:00 P. M. Memorial services at Commodore Memorial.
5:00 P. M. Seascout demonstration.
Evening 9:00 P. M. Yachtsmen Ball at Colonial. Strictly formal Yachting dress. Tickets \$2.00 per couple.

FRIDAY, JULY 14TH

Morning 8:30 A. M. Sail yacht races. All classes.
Afternoon 2:30 P. M. Race of life boats from Str. "Chippewa", "Put-in-Bay" "Eric Isle" "Goodtime" and U.S.C.G. Cutter "Seminole".
Evening 8:00 P. M. Distribution of prizes. Hotel Crescent.

GENERAL INFORMATION

HEADQUARTERS: Put-In-Bay Yacht Clubhouse.

SECRETARY-TREASURER's *office hours*: 4:00 P. M. to 6:00 P. M.



All yachtsmen and their ladies must register.

All yachtsmen of the Inter-Lake and invited clubs, whether yacht owners or not, are invited and urged to participate in all of the events of the week and have their ladies participate wherever possible, to make the week successful in every way.

Obtain entry blanks, racing numbers and racing information at Headquarters.

Every yacht should be measured by the measurer of its home club and measurer's signature should be on entry blank.

Sign your entry and state clearly all answers to questions.

No entry fee will be charged in any event.

Get your entry in early to assist the committees.

Two or more entries must be received or an event will be cancelled.

Prizes in any event will be awarded according to number of entrants. If two entrants, only one prize will be awarded; if three entries, two prizes, etc.

Ball Tickets, Banquet Tickets, etc., may be purchased at Headquarters.

Postponements, changes in courses or events, results and all official announcements will be posted on the Bulletin Board at Headquarters. Watch it.

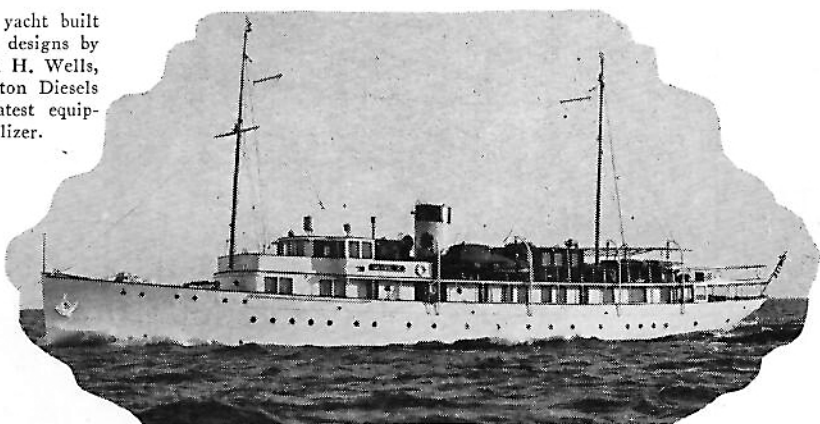
All events of the regatta will be started promptly on time. Be on your mark.

The official time used at meet will be Put-In-Bay Yacht Club time, according to clock at Headquarters.

Tickets for the Banquet, and Yachtsmen's Ball on sale at Headquarters. Get yours at once, only a limited number.

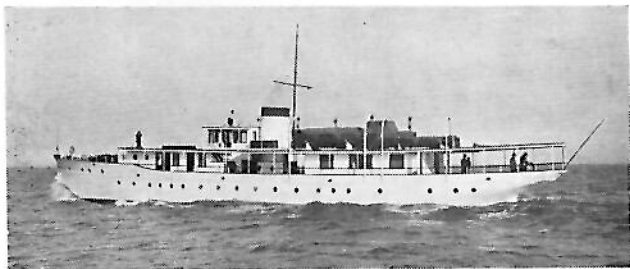
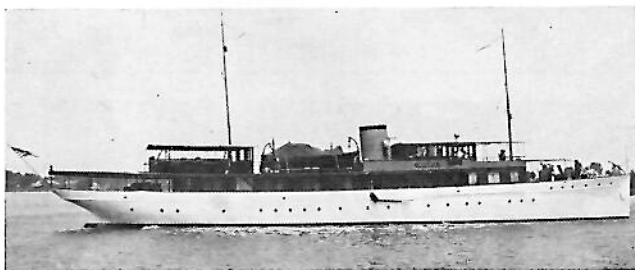
OLIVE K, 170 ft. steel yacht built for C. F. Kettering from designs by Cox and Stevens and John H. Wells, is powered with two Winton Diesels and carries all of the latest equipment including gyro stabilizer.

Defoe Built Yachts



THALIA, 160 ft. steel yacht built for Thos. P. Howell from design by Tams, Inc., is unique in design and up to the hour in furnishings and equipment. Powered with two Winton Diesels.

SARAMAR III, 153 ft. steel yacht built for Chas. T. Fisher from design by John H. Wells is one of the largest and handsomest of the Detroit yacht fleet. Her power is two Winton Diesels.

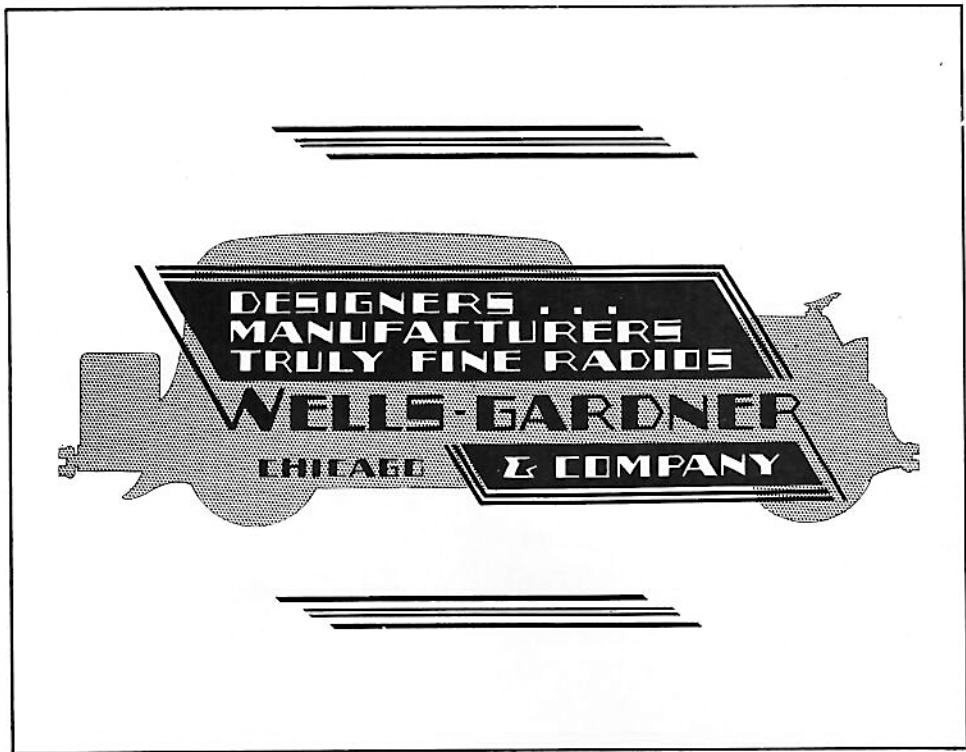


MARNELL, 135 ft. steel yacht for M. W. Alworth from design by John H. Wells, has seen year-round service since 1929. She is powered with two Bessemer Diesels.

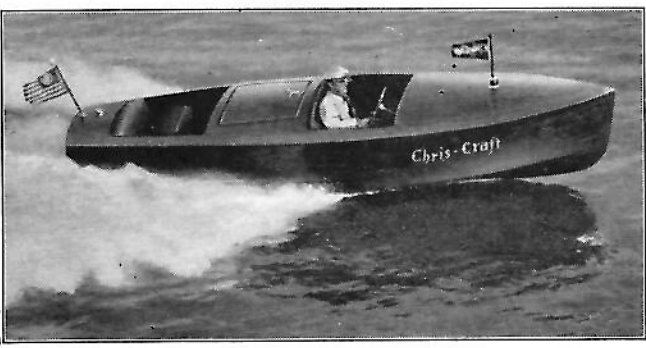
ELDA, 138 ft. steel yacht built for Arthur V. Davis from Cox and Stevens design is a light, speedy boat of 20 knots. Her power consists of two 16-cylinder vec-type Winton Diesels turning 700 r.p.m.



Defoe Boat & Motor
Works, Bay City, Michigan



**Let's
Go!**



THIS GENUINE FULL-SIZED CHRIS-CRAFT RUNABOUT

Style and beauty, pep and go—six-passenger carrying capacity—50 h. p. rubber mounted motor and 30-mile speed—Philippine mahogany hull, double-planked bottom, cam and lever steering! See it—drive it—at the nearest Chris-Craft dealer's.

CHRIS-CRAFT CORPORATION, 3100 Detroit Rd. • Algonac, Mich.
Direct Factory Branch • 6 W. 52nd St. • New York City

is yours for
\$595

With **LEVEL RIDING**

RUNABOUTS • CRUISERS
COMMUTERS

Chris-Craft

SEDANS • YACHTS
TENDERS

PRICED FROM \$595 TO \$13,950 F. O. B. ALGONAC

(181)

SAIL YACHT PROGRAM

Classifications

"R"—	<i>Sloops Universal</i>	"S"—	<i>Low Rig</i>
"22 Sq."	<i>—Sloops International</i>	"K"—	<i>I-L-Y-A Cat (Private Owned)</i>
"A"—	<i>Division "A" Rating Under 25 Ft.</i>	"CK"—	<i>I-L-Y-A (Club Owned)</i>
	<i>Division "B" Rating Over 25 Ft.</i>	"CK"—	<i>I-L-Y-A Cat Free-For-All</i>
"Y"—	<i>Yawls</i>	"CC"—	<i>Cabin Cat</i>
"SCH"—	<i>Schooners</i>	"D"—	<i>Frost Bite Dinghy</i>
"S"—	<i>High Rig</i>		



STARTING TIME—SAIL YACHTS

TUESDAY, WEDNESDAY AND FRIDAY—ALL CLASSES

Warning Gun	8:30 A. M.
Preparatory Gun	8:45 A. M.
Start Class "R"	8:55 Long Course
Start Class 22 Square Meter	9:00 Long Course
Start Class "A" Both A & B Divisions	9:05 Long Course
Start Class "Y"	9:10 Long Course
Start Class "SCH"	9:15 Long Course
Start Class "S" High Rig	9:20 Short Course
Start Class "S" Low Rig	9:25 Short Course
Start Class "K"	9:30 Short Course
Start Class "CK"	9:35 Short Course
Start "CK Free for All"	9:40 Short Course
Start Class "CC"	9:45 Short Course
Start Class "D" Frost Bite Dinghy	9:50 Special Course

COMMODORES' CAT BOAT RACE

3:00 P. M. WEDNESDAY

LADIES' CAT BOAT RACE

4:00 P. M. WEDNESDAY

RACING RULES FOR SAIL YACHTS

Certificate of measurement must be filed with entry. The Sail Yacht Regatta Committee reserves the right to order any yacht entered re-measured.

Races for all classes, starting five minutes apart on Tuesday, Wednesday and Friday mornings; starting first class at 8:55 A. M.

All races under Y. R. U. and I. L. Y. A. Rules, as amended to date.

In Class C. K. championship flag goes to skipper making highest percentage, cup to club having highest percentage with three boats.

Entries for all point races must be made with Sail Yacht Regatta Committee at headquarters before 6 P. M. Monday, July 10th, unless competing yacht arrives too late to enter before this time.

Alterations of the race program or sailing course may be made at the discretion of the Sail Yacht Regatta Committee. Such changes will be posted on Bulletin Board.

Numbers must be carried by each yacht on each side of its mainsail. These numbers will be supplied by the Sail Yacht Regatta Committee at Headquarters.

No person other than the Judges, Regatta Committee and Clerks will be allowed on Judges' boat without the consent of the Chairman of the Sail Yacht Regatta Committee.

All stakes to be left to port unless changed by Regatta Committee. If the Regatta Committee decides to reserve the course and have stakes left to starboard, a green flag will be flown from judges' boat. Red flag will mean all stakes to port. The judges' boat will fly a white flag with blue letters R. C.

Guns must not be fired from any yacht within one hour of the time of starting races, and not until after every yacht has crossed the finish line.

All vessels following the races must keep to leeward, and at such distance as not to interfere with the maneuvers of the competing yachts.

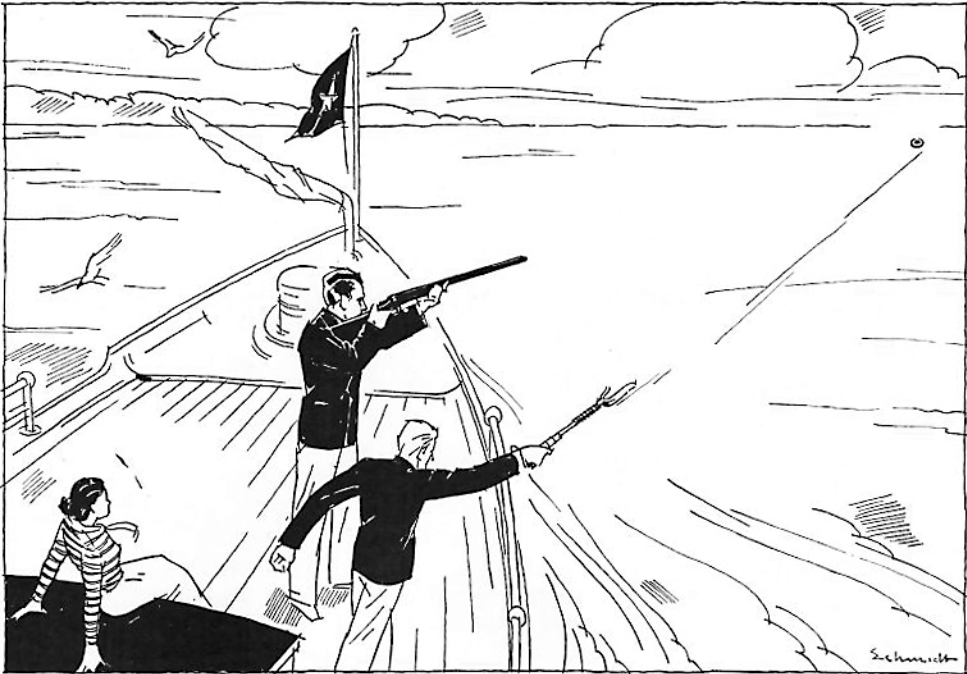
The races are open to every yacht which complies with the rules and which is regularly enrolled in any club in the Inter-Lake Yachting Association, Y. R. U., or which has been invited to participate in the races.

All boats sailing the long outside course will have four hours' time limit.

All boats sailing the short inside course will have three hours' time limit.

Sailing Courses

The course for all series races for sailing yachts in Classes R, 22 SQ, A, Y and SCH, will be triangular, starting from a line between a flag buoy off the east end of Gibraltar Island and a similar flag buoy in line with the west end of Middle Bass,



Fascinating New Water Sport

Target Shooting with a Western Hand Trap from the deck of your boat

Deck shooting, at clay targets thrown from a Western Hand Trap, is a new sport that appeals to women as well as to men. With very little practice you can make the White Flyer targets skim out over the water—or swing in wide sweeping curves to the right or left. You can make them easy or difficult to hit, according to the skill of the shooter.

Here's something to do when you or your guests tire of watching the shoreline. In fact, you'll take your shooting first and look at the scenery later after you once try this exciting new game . . . The Western Hand trap weighs only 11 ounces, is easy to use and inexpensive. Western White Flyer targets are packed in cartons of 135 targets, easily taken aboard. You will want to use the shells that are best for skeet or trapshooting on land: Western Xpert, Field or Super-X. The ideal gun is the new Winchester Model 42 .410 gauge Repeating Shotgun. It takes the new 3-inch Western Super-X or Winchester Repeater Super-Speed Shells—equal in power to a light 20-gauge charge. Write for free descriptive literature and see your sporting goods dealer before your next cruise.



WESTERN CARTRIDGE COMPANY
784 Adams Street EAST ALTON, ILL.

Branch Offices: Jersey City, N. J.; San Francisco, Cal.

The sensational new WINCHES-
TER Model 42 .410-Bore Shotgun



The most practical .410 ever developed. Shoots double the usual shot charge—in the new .410 gauge shells that are 3 inches long instead of 2½. This fine gun is designed similar to the famous Winchester Model 12. Will kill quail, dove, grouse, pheasant, duck or rabbit at 30 yards and farther.

Western

Ammunition : Traps : Targets



Revere Copper & Brass, *Incorporated*

2 3 0 P a r k A v e n u e

New York, N. Y.



• E M P I R E •
S T E E L S H E E T S

AUTO
BODY

ELECTRICAL
ALL GRADES

COLD
ROLLED

HOT
ROLLED
PICKLED

HOT ROLLED
ANNEALED

TIN MILL
BLACK
ALL GRADES

WABIK METAL
VITREOUS ENAMELING

*Quality and delivery perfectly in
line with your requirements*

EMPIRE STEEL CORPORATION
MANSFIELD, OHIO

SALES OFFICES: New York, Dayton, Cleveland, Indianapolis, Chicago, Detroit, St. Louis

RACING RULES FOR SAIL YACHTS

(Continued)

to and around a stake three nautical miles N. N. W., thence to and around a stake three nautical miles S. W. three-quarters S., thence to and around a stake three nautical miles, E. one-half S. to and across starting line between starting stakes. In finishing yachts must cross the starting line in the opposite directions from which they start. All stakes must be left to port, unless otherwise ordered by the Sail Yacht Regatta Committee as heretofore provided.

The course for Classes, Star, K, CK, and CC, starting from the same line, will be a shorter triangle with the same compass courses, but with one and one-half miles to the side, or a total of four and one-half nautical miles.

RULES COVERING CLASS "Y" (CRUISING YAWLS)

All yachts in this class will be governed by the Y. R. U. rules, and will obtain their measurement rating under the Y. R. U. rules, with following exceptions:

Use of pot lead or similar compounds prohibited.

Measurement shall be determined with full cruising equipment aboard, and all such equipment shall be carried aboard throughout all races (not including dinghy).

Two per cent will be added to actual sailing time of yachts without engine as allowance to yachts with engine.

Yachts equipped with engine shall have engine sealed.

There will be no restrictions on the number of passengers carried in this class of races.

CLASS STAR: Rules of the Star Class Yacht Racing Association to govern.

TIME ALLOWANCE

Time allowance will be computed on yachts in Classes "A", "SCH" and "Y", under the formula and table of the Yacht Racing Union.

WATCH BULLETIN BOARD

There will be a Bulletin Board at Headquarters where changes in program and special instructions will be posted throughout the week.

All yachts whose preparatory gun has not been fired must keep clear of starting line. Any yacht wilfully violating this rule will be disqualified.

Established 1898



*B
B*

*B
B*

BELL & BECKWITH

519-521 Madison Ave.

Toledo Ohio.

Phone Main 3201



SPECIAL SAIL YACHT RACES

MONDAY AND TUESDAY AFTERNOONS

On Monday and Tuesday afternoon extra races are scheduled for the racing classes as follows—

- Class "R" Universal sloops
- Class "22" Square Meter
- Class "A" Under 25 foot rating
- Class "S" High and low rig one class
- Class "K" Free for all cat boats, all I. L. Y. A. cat boats eligible.

Preparatory gun	1:30
Warning gun	1:55
Start Class "R"	2:00
Start Class "22"	2:05
Start Class "A"	2:10
Start Class "S"	2:15
Start Class "K"	2:20

Courses

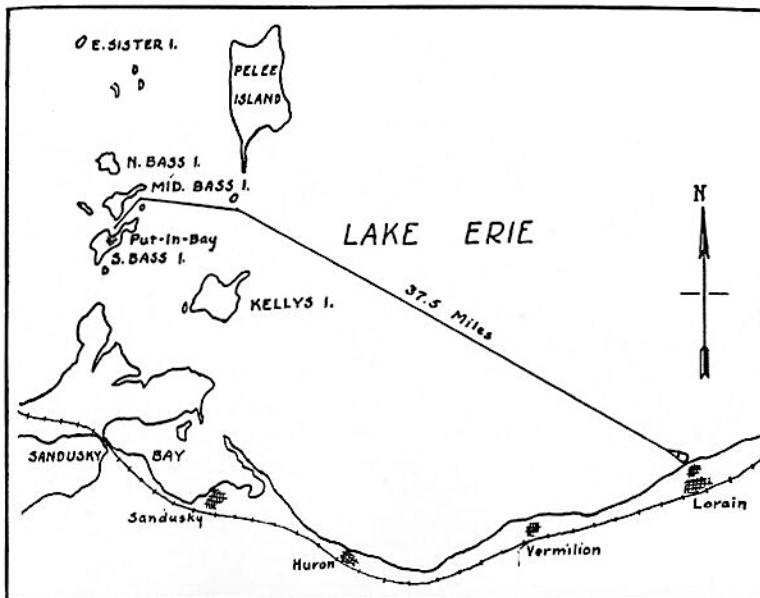
Class "R" long triangle course. All other classes short triangle course. Point Flag will be awarded to winner in each class.



SEARS CUP ELIMINATION RACES

For Junior Sailors, boys and girls under 18 years of age. A series of elimination trial races for contestants for the Sears Cup Races to be sailed at East Gloucester, Mass. on August 28th, 29th and 30th under the auspices of the Eastern Point Yacht Club will be scheduled for Monday, Tuesday and Wednesday afternoons. High rig Star Class boats will be sailed in the trials.

For further information obtain details from the sail yacht race committee and bulletin board.



**COURSE OF THE INTER-LAKE DEEP WATER RACE
PUT-IN-BAY TO LORAIN, OHIO, AND RETURN
WEDNESDAY, JULY 12, 1933**

THIS RACE is open to any bona-fide cruising yacht. Converted racing yachts, and all other originally and particularly designed for class racing, are expressly barred.

The Race Committee is directed to reject the entry of any yacht which does not conform to the spirit of the cruising classification.

<i>Warning Gun</i>	5:30 P. M.	<i>White Flag</i>
<i>Preparatory Gun</i>	5:45 P. M.	<i>Blue Peter</i>
<i>Starting Gun</i>	6:00 P. M.	<i>Checkered Flag</i>

STARTING LINE. From the Judge's boat to a buoy or flag at right angles from the Judge's boat in a general southeasterly direction.

COURSE AND FINISH. No restrictions on course, except that the start must be according to diagram. The finish is optional, except yacht must finish across the line in the opposite direction of the start.

TURNING MARK. A coast guard boat anchored approximately one mile in a general northwesterly direction from the outer harbor light on Lorain piers. Entrants must call and announce name and racing number of yacht upon rounding mark, leaving same to Port.

TIME LIMIT. After any yacht has finished, the remaining yachts will be allowed 12 hours plus time allowance in which to cross the finish line.



Keep it Alive!

The tradition of your favorite sport, yachting, must be perpetuated. Only by dint of much work and labor do these men who head the Interlake each year bring to our lives a keener relish, a finer fellowship, a deeper joy because of their personal sacrifice of time. Your contribution, small as it may be, helps maintain the yachtsmen's fund of the I. L. Y. A.; helps the sport and its devotees.

*Can we depend on you for
your bit? Make remittance to*

YACHTSMEN'S FUND, I.L.Y.A

care of THE COMMERCIAL BANKING AND TRUST CO.

SANDUSKY, OHIO

LEE B. KELLER, *Secretary*



Where Dependability Counts

Strange as it may seem, there are as many as 20 different electrical wires and cables in a medium-sized stock cruiser. That they should be well made and properly insulated is a self-evident fact. Failure of starter or ignition cables might have serious consequences . . . and during the night, all yachtsmen realize the necessity of guarding against the fail-

ure of running and riding lights —particularly in crowded waters.

There is an Anaconda Wire or Cable for every electrical requirement in the building of boats and engines. Made in modern mills by skilled workmen, products of the Anaconda Wire & Cable Company are relied upon for dependable service by leading architects, builders and yards.



ANACONDA WIRE & CABLE COMPANY

25 Broadway, New York City

ANACONDA WIRES & CABLES



The
Corrigan, McKinney Steel
Company

Cleveland, Ohio



POWER BOAT PROGRAM

Classification

Division	Type
A	Cruisers (Not over 12 miles per hour)
B	Cruisers (Over 12 miles per hour)
C	Speed Boats (650 cu. in. and under Displacement Boats)
D	Speed Boats (Free-for-All)

TUESDAY, JULY 11TH

Preparatory Gun 1:30 P. M.

Division	Starting Time	Distance	Type of Boat
A	2.00	10 miles	Cruisers under 12 miles
B	2.20	10 miles	Cruisers over 12 miles
C	3.00	20 miles	650 cu. in. and under Displacement Boats
D	3.10	20 miles	Free-for-All Displacement Boats

WEDNESDAY, JULY 12TH

Same as July 11th

THURSDAY, JULY 13TH

Preparatory Gun 8:30 A. M.

Division	Starting Time	Distance	Type of Boat
A	9.00	10 miles	Cruisers under 12 miles
B	9.20	10 miles	Cruisers over 12 miles
C	10.00	20 miles	650 cu. in. and under Displacement Boats
D	10.10	20 miles	Free-for-All Displacement Boats

POWER BOAT RACING RULES

1. Entries for all Power Boat races must be filed at Inter-Lake Yachting Association headquarters before July 10, 1933, at 6:00 P. M.
2. All boats in Divisions A, B, C and D shall be measured by an accredited measurer of the A. P. B. A., their home club measurer. Boats not measured before their arrival at Put-In-Bay shall be reported at Inter-Lake headquarters. The owner's name, boat's name, measuring fee, and anchorage shall be given to the secretary, so that the measurer can locate the boat readily.
3. Certificates of measurement must be filed with entries and the Regatta Committee reserves the right to remeasure at its option.
4. Races for each class shall consist of three heats.

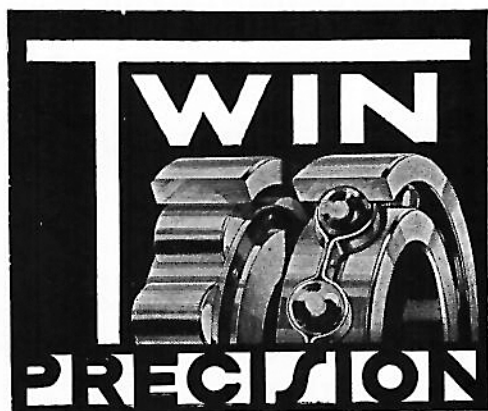
First heat. A. P. B. A. handicap racing rules or declared time with 5% leeway and penalty as provided in said rules.

Second Heat. Handicapped according to time of first heat. Any boat finishing ahead of actual elapsed time of first heat in excess of 5% to be penalized double the amount of excess over 5% in figuring the corrected time for second heat.

Third Heat. Handicapped according to the best elapsed time of the two previous heats. Any boat finishing ahead of best elapsed time of two previous heats to be penalized double the amount of time over the 5% allowable excess in figuring the corrected time for third heat.

The second and third heats will be a handicap race with the limit boat starting first.
5. All boats in a class in the first heat will start at the same time and handicaps allowed by allowing time against the corrected time.
6. Points for finish position will be awarded according to the Rule XXIX of the A. P. B. A. as follows:

First boat to finish.....	400 Points
Second boat to finish.....	361 Points
Third boat to finish.....	324 Points
Fourth boat to finish.....	289 Points
Fifth boat to finish.....	256 Points
Sixth boat to finish.....	225 Points
Seventh boat to finish.....	196 Points
Eighth boat to finish.....	189 Points
Ninth boat to finish.....	144 Points
Tenth boat to finish.....	121 Points
Eleventh boat to finish.....	100 Points
Twelfth boat to finish.....	81 Points
7. The Committee reserves the right to require a minimum of three boats to constitute a race.
8. The boat making the most points in the three scheduled heats will be declared the winner unless, of course, it has been disqualified for infraction of rules.
9. Starting times for all handicapped boats will be posted at headquarters before the race.
10. In general the racing rules of the A. P. B. A. will hold.
11. Summary: These rules have been drawn up, and their sole intent is to minimize as much as possible all differences in boat speeds, and to make seamanship and consistent performance the deciding factors.



**NORMA-HOFFMANN
BEARINGS CORPORATION**

Stamford — Connecticut — U.S.A.

PRECISION BALL ROLLER AND THRUST BEARINGS



COLD FINISHED BAR STEEL
 COLD ROLLED STRIP STEEL
 ROUGH TURNED BARS
 POLISHED DRILL RODS

MUSIC WIRE
 WELDING ROD
 FLAT WIRE

TOOL AND DIE STEELS

WATER HARDENING OIL HARDENING AIR HARDENING
 ROUNDS, SQUARES, FLATS AND SPECIAL SHAPES

CRAINE-SCHRAGE STEEL CO.

General Offices and Warehouse
 6189 Hamilton Ave.

Toledo Office
 1900 Second Nat'l. Bank Bldg.

In Marine Motors or Motor Cars

HI-SPEED

**“CHAMPION”
 MOTOR FUELS**

... positively Satisfy Everybody's Desire for

SPEED

... give Greater Motor Efficiency and

POWER

... insure Lower Operating Cost and

ECONOMY

MODEL YACHT PROGRAM

Classification

- Class "A" International Model "A" yachts
- Class "B" 42 inch Sea Scout and 50 inch Marblehead
- Class "C" Free-for-all up to 36 inches. Boys only
- Class "D" Power Boats 40 inches and under

Races schedule to start Thursday morning, July 13th at 9 A. M.
A prize will be awarded to first place in each class.



OTHER SPORTS PROGRAM

THURSDAY, 12:30 P. M.

Center Dock

SWIMMING

INTER-LAKE YACHTING ASSOCIATION CHAMPIONSHIPS

For Men

- 100 yards Free Style
- 100 yards Breast Stroke
- 100 yards Back Stroke
- Fancy Diving 10 ft. board

For Women

- 100 yards Free Style
- 100 yards Breast Stroke
- 100 yards Back Stroke
- Fancy Diving 10 ft. board

Open to all registered A. A. U. Swimmers

THURSDAY, 10:00 A. M.

Indoor baseball game. Associated Yacht Clubs of Toledo vs. Detroit River Yachting Association. Parade Grounds next to Colonial.

FRIDAY, 2:30 P. M.

Race of life boats from Strs. "Chippewa", "Put-in-Bay", "Eric Isle", "Goodtime" and U. S. C. G. Cutter "Seminole".

For all-weather starting -you are *SAFE* with *USL*



Rough waters are no place for battery troubles. Motorboats equipped with USL batteries are fully protected from this danger. Every USL battery is built of materials especially selected for greater power and longer life. The safety and dependable service of USL is true battery economy.

USL Battery Corporation, Niagara Falls, N. Y.

USL BATTERIES *Long Life . . Dependable Power*

Spaulding Fibre Company

INCORPORATED

TONAWANDA, N. Y.

Manufacturers of

VULCANIZED FIBRE AND SPAULDITE LAMINATED IN SHEETS, RODS,
TUBES AND FINISHED SPECIALTIES

FACTORIES

TONAWANDA, N. Y.
NEW YORK, N. Y.

NORTH ROCHESTER, N. H.
CHICAGO, ILL.
TOWNSEND HARBOR, MASS.

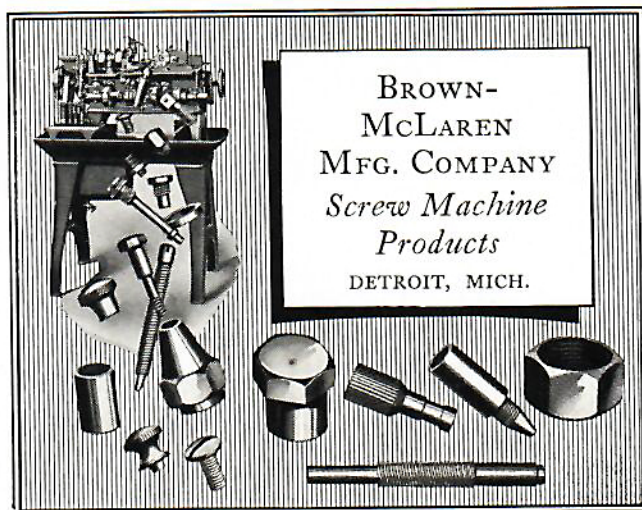
ROCHESTER, N. H.
MILTON, N. H.

WE WISH YOU ALL
A FAIR WIND
A GOOD RACE
AND A SAFE HARBOR



THE CARBORUNDUM COMPANY
NIAGARA FALLS, NEW YORK

*Manufacturers of Abrasive Products Extensively Used
in the Building, Repairing and Refinishing
of the Crafts of Many Waters.*



In appreciation of the splendid spirit of sportsmanship . . .

long fostered by a great
yachting association, we
offer this as our contri-
bution to the further-
ance of its activities.

P. R. MALLORY & CO.

Incorporated

INDIANAPOLIS, INDIANA

Makers of

Electrical Contacts	Switches
Mallory-Elkon "B" Elimina- tors for Auto Radio Sets	Jacks
Automobile Battery Chargers	Cable Connector Devices
Dry Electrolytic Condensers	Dial and Pilot Lights
Volume Controls	Radio Convenience Outlets
Rheostats	Elkonite, Elkonium, Elkaloy and Mal-Arc Metallurgical
Potentiometers	Products
Rectifiers	Hard Facing Rods
Resistance Units	Knapp Electric Toys

*Divisions: Elkon, Inc.—Knapp Electric, Inc.
Yaxley Mfg. Co., Inc.*



ENTERTAINMENT PROGRAM

MONDAY, JULY 10TH

- Afternoon 4:00 P. M.* Open House aboard Flagship "Helene".
- Evening 7:00 P. M.* Yachtsmen dinner, Hotel Crescent, Yachtsmen and Ladies invited. \$1.50 per person. Get your tickets in advance at headquarters or from Commodore T. B. Alexander. Number limited. Plenty of entertainment.

TUESDAY, JULY 11TH

- Afternoon and Evening 9:00 P. M.* Put-in-Bay Day. Special program arranged by Special Committee of Put-in-Bay residents. See detail, Bulletin at headquarters.
- 9:00 P. M.* Dance at Colonial. Tickets \$1.00 per couple.

WEDNESDAY, JULY 12TH

- Afternoon 2:00 P. M.* Ladies' Lawn Party, Bay View Hotel, in charge of Ladies' Entertainment Committee. In case of rain party will be held at Golf Club House.
- Evening 8:30 P. M.* Commodores Reception aboard Steamer Chippewa. Dancing, entertainment and moonlight ride.

THURSDAY, JULY 13TH

- Afternoon 2:30 P. M.* Squadron sail. Yacht owners who have surplus accommodations on the Squadron sail are requested to invite other Yachtsmen and their Ladies.
- Evening 9:00 P. M.* Annual I. L. Y. A. Yachtsmen's Ball at Colonial Pavilion. Strictly formal Yachting Dress. Tickets \$2.00 per couple. Extra Lady with escort free. Dancing and entertainment until 1:00 A. M.

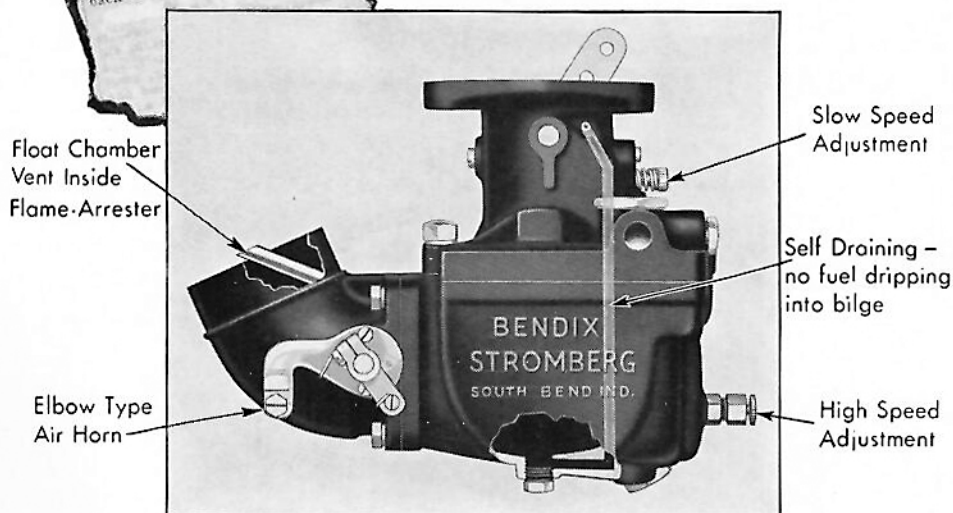
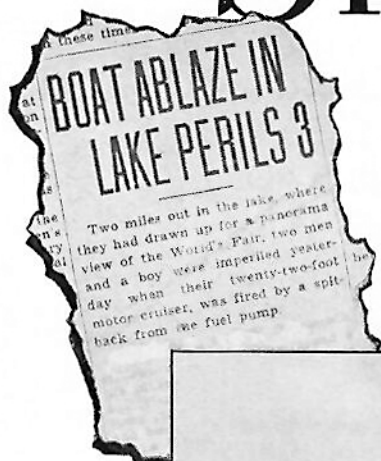
FRIDAY, JULY 14TH

- Evening 8:00 P. M.* Prize distribution at Hotel Crescent Pavilion.



STROMBERG

now adds
triple safety to
marine carburetion



Kermath, Scripps, Universal, Red-Wing, Roberts, Buchanan, and many other marine engines, are now equipped with Stromberg Marine Carburetors.

Let us supply a Stromberg, especially calibrated for your engine, which, *without* tedious adjustments, will *increase power* and *R. P. M.*, will reduce fuel consumption and will *increase safety* by greatly reducing fire hazard.

Write for complete information and interesting data sheet.

BENDIX PRODUCTS CORPORATION

(Stromberg Carburetor Division)

401 BENDIX DRIVE, SOUTH BEND, IND.

(Subsidiary of Bendix Aviation Corporation)

The Blake & Johnson Co.

WATERVILLE, CONN.

Since 1849



Manufacturers of

Machine Screws, Nuts
and
Screw Machine
Products

DIE CASTINGS *of Quality*



Schultz Die Casting Co.

Forest 5910

1810-16 Clinton St.

TOLEDO, OHIO

Lighting Your Way!

Searchlight lamps
Running Light
Lamps
Interior Lamps
Berth Lighting
Lamps
Flashlight Lamps



FOR every marine lighting purpose, General Electric has a MAZDA lamp. That means your boat-lighting problems are solved for you, if you keep a weather eye open for the famous GE monogram on every lamp you buy.

You buy lamps for the light they give. MAZDA lamps of General Electric manufacture give maximum light for the current they consume, whatever the lighting task. Insist upon them for lighting satisfaction. General Electric Company, Nela Park, Cleveland, Ohio.

INCANDESCENT LAMP DEPARTMENT

GENERAL  ELECTRIC



THE MACALLEN COMPANY

MICA MANUFACTURERS

BOSTON, MASS.



Good Taste
Makes Good Things
Taste Better

THIN, clear, sparkling table glassware is always a perfect reflection of the quiet good taste of the home in which it is found. And as it is a mark of good taste, so it reveals an appreciation of the indisputable fact that all refreshing things to eat and drink taste their best when served in thin, clear, sparkling glassware.

That's why Libbey Glass, made by a company with more than one hundred and fifteen years of experience in the manufacture of fine glassware, is the choice of the discriminating people everywhere.



THE LIBBEY GLASS MANUFACTURING CO.
TOLEDO, OHIO

••••• BGR •••••
INC.

SPRINGS

Cook Spring Company
Division
Ann Arbor, Mich.

Flat and Wire

Detroit Division
6400 Miller Ave.,
Detroit, Mich.

BARNES-GIBSON-RAYMOND, INC.

TOLEDO'S Favorite Coffee



The Biggest Bund of Coffee in the World

Good Coffee
CHEF
Cup Tested
COFFEE

Roasted and Packed by
THE BERDAN COMPANY
TOLEDO, OHIO
FOUNDED 1836



The
CUYAHOGA
SPRING
COMPANY

CLEVELAND, OHIO

LATROBE TOOL CO., LATROBE, PA.

AND

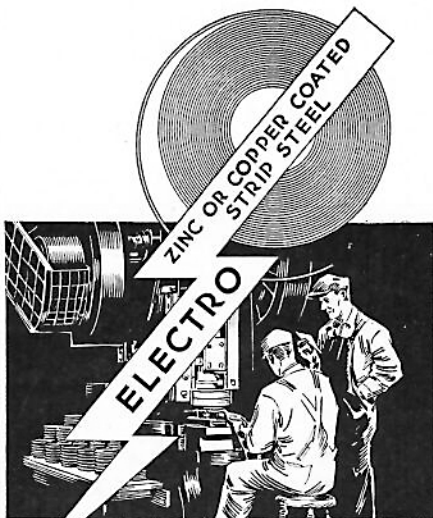
J. M. CARPENTER TAP & DIE COMPANY
PAWTUCKET, R. I.



*This page is a contribution
from friends of the*

INTERLAKE
YACHTING
ASSOCIATION





Eliminate Costly Manufacturing Steps

ELECTRO coated with a selection of non-ferrous metals—zinc, copper, or tin—ThomaStrip eliminates the need for costly pickling and plating equipment and handling expense . . . Sales appealing appearance, rust-resistance and the bond for product finishes are provided at low cost . . . Check ThomaStrip for your product and production. Send for test samples, specifying coat, width, gauge and finish desired. A Thomas representative will gladly assist you in solving your manufacturing problems.

ThomaStrip

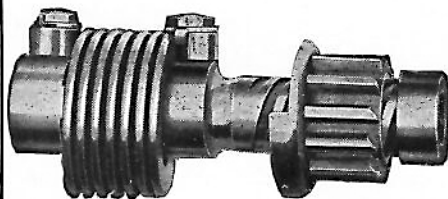
BRIGHT FINISH
COPPER COATED
ZINC COATED

Send for Test Samples
—specify coat, width,
gauge and finish
desired.

The **THOMAS STEEL CO.**
WARREN OHIO

Headquarters for Specialized Production
Cold Rolled Strip Steel

The Bendix Drive



The mechanical hand that cranks gasolene engines everywhere. Used on the large majority of all marine installations. Entirely automatic in its action—There is a design and size for every requirement.

ECLIPSE MACHINE CO.
(Subsidiary of Bendix Aviation Corp.)
ELMIRA, N. Y.

**LATROBE
ELECTRIC STEEL
COMPANY**
LATROBE, PA.



Manufacturers of
HIGH GRADE TOOL STEELS
HIGH SPEED
CARBON
STAINLESS STEEL
STAINLESS IRON
ALLOY STEELS

by Electric Furnace Methods Exclusively

Branch Warehouses

Chicago Cleveland Detroit
Toledo Boston



Achievement rides on New Departures

TRUE it is that New Departures are party to many a spectacular feat . . . in Gar Wood's record-breaking boat, in Indianapolis race cars, in dirigibles, airplanes and submarines. » » » More important, though perhaps less impressive, are the extra miles which millions of New Departures are giving motorists — thus demonstrating the specifying wisdom of automotive engineers. » » » Built sincerely for the sole function of friction reduction and lengthening life, New Departures do not concede better performance or more lasting satisfaction to any other make or type of bearing, regardless of cost. » » » The New Departure Mfg. Company, Bristol, Conn.; Detroit and Chicago.

NOTHING ROLLS LIKE A BALL

NEW DEPARTURE BALL BEARINGS



Delightful HOLIDAY BOATING *free from motor worries*



Owners of Auto-Lite equipped motor boats know the satisfaction that comes from starting, lighting and ignition service that they can depend on—the knowledge that their boat is always ready to go at a moment's notice and will take them there and back again with no electrical troubles to spoil the fun. For longer, surer performance it pays to insist upon Auto-Lite electrical equipment. The Electric Auto-Lite Company, Toledo.

Auto-Lite

Starting, lighting & ignition