

PROPERTY OF  
WLEHS

No. \_\_\_\_\_



Commodore Perry  
1812

**I.L.Y.A.**  
**Official Program**  
**42nd Annual Regatta**  
**Put-in-Bay, August 18<sup>th</sup> to 21<sup>st</sup>, 1935**

*Compliments of*

**Monroe Steel Casting Co.**

Monroe, Michigan



[2]

FILE NO.	PHOTO DATE
TITLE	
PLACE	HELEN BROOKS
COLLECTION	WLEAS COLLECTION

# *Stroh's* BOHEMIAN BEER

"Served Wherever  
Quality Counts"

## TUF-FLEX

### Tempered Plate Glass

is a new kind of plate glass much stronger and much more flexible than regular plate. It is ideal for use in water craft, for it is much more resistant to the pressure of pounding seas. It is now being used as port hole glass in deep sea vessels. Your inquiry is invited.

Address—

# LIBBEY·OWENS·FORD

## GLASS COMPANY



Toledo, Ohio



BOAT SUPPLIES AND EQUIPMENT

*Most Complete Line in the Middle West*

for

**SAIL OR POWER BOATS**

Service and Racing

Cruisers and Yachts

Johnson Outboard Motors—Sales and Service

## HENRY H. SMITH & CO.

334-338 E. Jefferson

We Deliver—CHerry 0226

Detroit, Mich.

# Braun Lumber Corporation

RETAIL & WHOLESALE

## LUMBER & INTERIOR FINISH

MAIN OFFICES

1555 DAVISON AVE. E.

LONGFELLOW 0320

DETROIT, MICH.



*The*

## Columbus Malleable Iron Company

Columbus, Ohio



Makers of  
CERTIFIED MALLEABLE CASTINGS  
for all purposes.

# PROGRAM

*of the*

## Inter-Lake Yachting Association

# 1935

ORGANIZED JANUARY 17, 1885

REORGANIZED MARCH 19, 1894

*Member of*

YACHT RACING UNION OF THE GREAT LAKES

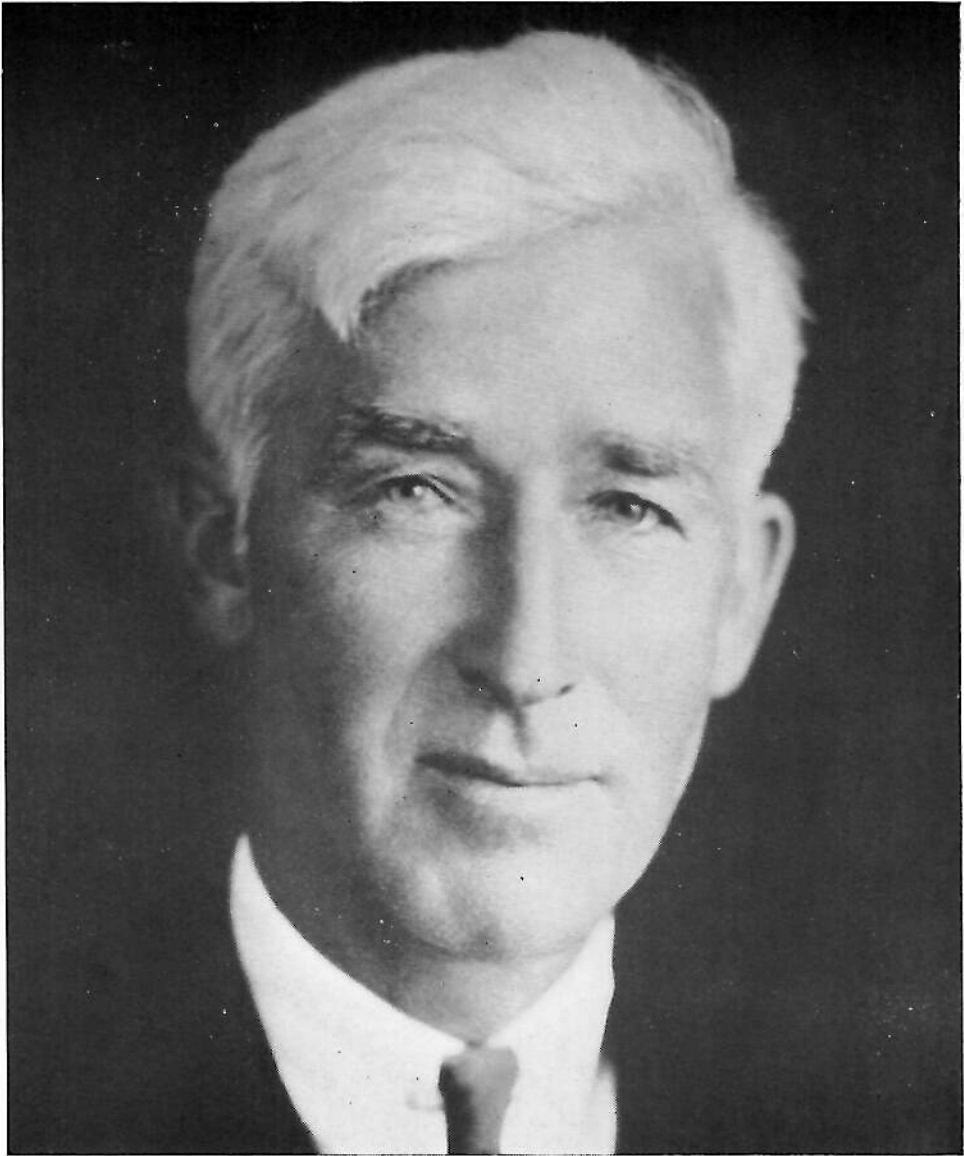
NORTH AMERICAN YACHT RACING UNION

STAR CLASS YACHT RACING ASSOCIATION

AMERICAN POWER BOAT ASSOCIATION

AMATEUR ATHLETIC UNION

CENTRAL ASSOCIATION



**Gar Wood, D. Y. C.**

**Commodore of the I. L. Y. A., 1935**

# I. L. Y. A.

## OFFICERS, DELEGATES and TRUSTEES



Gar Wood, D. Y. C.....	<i>Commodore</i>
R. A. Luedtke, T. Y. C.....	<i>Vice-Commodore</i>
Edgar T. Wolfe, B. L. Y. C.....	<i>Rear-Commodore</i>
Charles F. Kettering, D. Y. C.....	<i>Fleet Captain</i>
Walter X. Brennan, B. Y. C.....	<i>Secretary-Treasurer</i>
Dr. H. C. Ballard, L. Y. C.....	<i>Fleet Surgeon</i>
John C. Robinson, V. Y. C.....	<i>Powerboat Measurer</i>
George Wakefield, V. B. C.....	<i>Recording Secretary</i>

### DELEGATES

#### *American Power Boat Association*

Commodore J. A. Tallman, T. Y. C.    Commodore C. A. Thornburgh, S. Y. C.  
Commodore John G. Robinson, V. Y. C.

#### YACHT RACING UNION OF THE GREAT LAKES

Commodore John F. Craig, T. Y. C.    Commodore William A. Wilson, B. Y. C.  
Commodore C. G. Jennings, D. Y. C.

#### NORTH AMERICAN YACHT RACING UNION

Commodore Russell A. Alger, Jr., B. Y. C.    Commodore Otto Barthel, D. Y. C.

#### AMATEUR ATHLETIC UNION

Commodore O. R. Benjamin, E. B. C.

# OFFICERS OF THE I. L. Y. A. - 1935



R. A. LUEDTKE, T. Y. C.  
*Vice-Commodore*



EDGAR T. WOLFE, B. L. Y. C.  
*Rear-Commodore*



WALTER X. BRENNAN, B. Y. C.  
*Secretary-Treasurer*



CHAS. F. KETTERING, D. Y. C.  
*Fleet Captain*



## ASSOCIATION MEMBERSHIP

Bayview Yacht Club of Detroit	Lakeside Yacht Club, Cleveland
Bayview Yacht Club of Toledo	Lorain Yacht Club
Buckeye Lake Yacht Club, Columbus	Maumee River Yacht Club, Toledo
Buffalo Canoe Club	Ottawa River Yacht Club, Toledo
Buffalo Launch Club	Port Clinton Yacht Club
Cleveland Yachting Club	Put In-Bay Yacht Club
Corinthian Yacht Club, Detroit	Sandusky Sailing Club
Crescent Sail Yacht Club, Detroit	Sandusky Yacht Club
Detroit Boat Club	Sarnia Yacht Club, Ontario, Canada
Detroit Yacht Club	Toledo Yacht Club
Edison Boat Club, Detroit	Vermilion Boat Club
Erie Yacht Club	Vermilion Yacht Club
Gull Lake Yacht Club, Battle Creek	

## PAST COMMODORES

*Geo. W. Gardner, C. Y. C.....1894	Harry C. Kendall, D. Y. C.....1915
*John E. Gunckel, T. Y. C.....1895	Emil G. Schmidt, S. Y. C.....1916
*Geo. H. Worthington, C. Y. C.....1896	*Alexander Winton, C. Y. C.....1917
*S. O. Richardson, T. Y. C.....1897	*Wm. R. Huntington, S. Y. C.....1918
*Alex I. McLeod, D. Y. C.....1898	R. George Marsh, G. P. Y. C.....1919
*Geo. T. Bliss, E. Y. C.....1899	*F. W. Wakefield, V. B. C.....1920
Geo. F. Anderson, S. Y. C.....1900	*F. W. Roberts, C. Y. C.....1921
*Wm. R. Huntington, S. Y. C.....1901	*C. W. Kotcher, D. Y. C.....1922
*C. C. Warren, S. Y. C.....1902	Sidney Frohman, S. Y. C.....1923
*Henry Tracy, T. Y. C.....1903	Otto F. Barthel, D. Y. C.....1924
John S. Smedley, D. B. C. Y.....1904	*Thos. A. Devillbiss, T. Y. C.....1925
*Geo. H. Worthington, C. Y. C.....1905	*A. A. Schantz, D. Y. C.....1926
John F. Craig, T. Y. C.....1906	Dr. W. A. Wilson, B. Y. C., Detroit.....1927
*Frank W. Fletcher, T. B. Y. A.....1907	E. H. Reed, T. Y. C.....1928
*Geo. H. Worthington, C. Y. C.....1908	Mark R. Hanna, D. Y. C.....1929
*S. O. Richardson, T. Y. C.....1909	E. E. Noble, C. Y. C.....1930
C. G. Jennings, C. C. of D.....1910	A. F. Wakefield, V. B. C.....1931
*Alexander Winton, L. Y. C.....1911	J. W. Vaughan, D. B. C.....1932
*Wm. E. Huntington, S. Y. C.....1912	C. O. Miniger, T. Y. C.....1933
*Geo. H. Worthington, C. Y. C.....1913	Stanley Gardner, C. Y. C.....1934
Henry W. Hess, T. Y. C.....1914	*Deceased.

## ADVISORY COMMITTEE

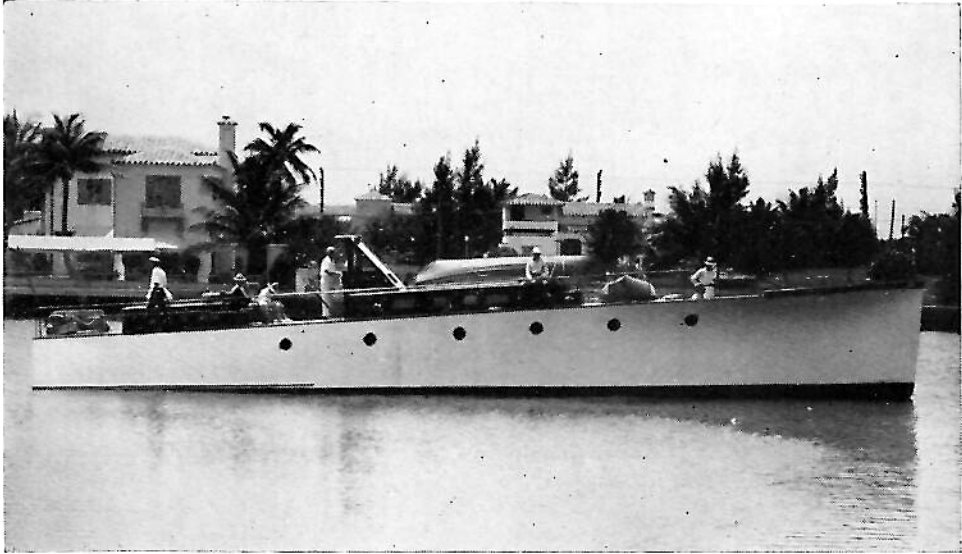
Commodore Otto F. Barthel, D. Y. C., *Chairman*

Commodore George F. Anderson, S. Y. C.	Commodore Sidney Frohman, S. Y. C.
Commodore John H. Smedley, D. B. C.	Commodore W. A. Wilson, B. Y. C.
Commodore John F. Craig, T. Y. C.	Commodore E. H. Reed, T. Y. C.
Commodore C. G. Jennings, G. P. C.	Commodore Mark R. Hanna, D. Y. C.
Commodore Henry W. Hess, T. Y. C.	Commodore E. E. Noble, C. Y. C.
Commodore Harry C. Kendall, D. Y. C.	Commodore C. O. Miniger, T. Y. C.
Commodore Emil G. Schmidt, S. Y. C.	Commodore A. T. Wakefield, V. B. C.
Commodore R. George Marsh, G. P. Y. C.	Commodore J. W. Vaughn, D. B. C.
	Commodore Stanley Gardner, C. Y. C.

## SAIL YACHT REGATTA COMMITTEE

Commodore William A. Wilson, B. Y. C., *Chairman*  
 Commodore T. B. Farnsworth, B. Y. C., *Vice-Chairman*  
 in Charge of Deep Water Race.

# GAR Sr.



Flagship  
of the Inter-Lake Yachting  
Association  
1935

## SAIL YACHT JUDGES COMMITTEE

Commodore Harry Kendall, D. Y. C., *Chairman*

Commodore Stanley Gardner, C. Y. C.	Commodore Al Wakefield, V. B. C.
Commodore Harry Austin, D. B. C.	Commodore Les Milkey, S. Y. C.
Commodore R. H. Ross, E. B. C.	Commodore Otto F. Barthel, D. Y. C.
Commodore Stanley Puddiford, C. S. Y. C.	Commodore T. B. Farnsworth, B. Y. C.
Commodore I. K. Stone, G. L. Y. C.	

## SAIL YACHT RULES COMMITTEE

Commodore Joseph N. Krolik, D. B. C., *Chairman*

Commodore Otto F. Barthel, D. Y. C.	Commodore Stanley Puddiford, C. S. Y. C.
Commodore Art Gibson, E. B. C.	Commodore R. A. Leudtke, T. Y. C.
Commodore P. C. Williamson, B. Y. C.	Commodore Harry Darst, S. S. C.
Marion Seward, E. B. C.	Frank Laurie, L. Y. C.
Al Smith, C. S. Y. C.	Sam Snell, T. Y. C.

## POWER BOAT RULES COMMITTEE

Commodore Charles Thornburgh, S. Y. C., *Chairman*

Carl Matthews, P. C. Y. C.	Commodore Milton Gallup, C. Y. C.
Commodore John G. Robinson, V. Y. C.	Commodore Dave Wende, B. L. C.
Robert Heintz, C. Y. C.	Walter Parker, D. Y. C.

## PATROL COMMITTEE

Commodore William A. Wilson, B. Y. C., *Chairman*

Commodore Ed Kiefer, P. H. B. C.	Commodore James Beam, B. L. Y. C.
----------------------------------	-----------------------------------

## SQUADRON SAIL COMMITTEE

Commodore L. R. F. Bellows, D. Y. C., *Chairman*

Leonard Thompson, D. Y. C., *Vice-Chairman*

A. J. Penote, C. Y. C.	Commodore Esmond Avery, B. Y. C.
George Pierce, B. L. Y. C.	A. J. Oliver, L. Y. C.
Commodore H. S. Walker, E. B. C.	Commodore William H. Thomas, V. Y. C.
Commodore D. S. Sterrett, E. Y. C.	Commodore Philo Wright, D. B. C.

## PROGRAM COMMITTEE

J. H. Kerns, D. Y. C., *Chairman*

Walter X. Brennan, B. Y. C.	James Sexton, B. L. Y. C.
William Pilkey, Jr.	Rudy Moc, L. Y. C.
Ed Miller, S. S. C.	R. J. Foote, T. Y. C.

## PUBLICITY COMMITTEE

J. Lee Barrett, D. Y. C., *Chairman*

John Horton, V. B. C.	George E. Van, D. Y. C.
Harry LeDuc, D. Y. C.	William Rapprich, C. Y. C.
William R. MacDonald, C. Y. C.	Don Cumming, C. S. Y. C.
Edward Batchelor, Jr., D. Y. C.	

## POWER BOAT JUDGES COMMITTEE

Commodore E. E. Noble, C. Y. C., *Chairman*

Commodore Wilbur J. Wright, C. Y. C.	Commodore Al. Corthell, L. Y. C.
Commodore W. P. Hurford, V. Y. C.	Commodore DeForest Hull, V. B. C.
Commodore Wm. H. Thomas, V. Y. C.	Mr. O. G. Voss, C. Y. C.
Commodore E. H. Reed, T. Y. C.	Mr. Jos. S. Murphy, C. Y. C.
Commodore John G. Robinson, V. Y. C.	Mr. J. A. Summerley, D. Y. C.
Commodore J. A. Minnich, L. Y. C.	Commodore Milton N. Gallup, C. Y. C.

## AVIATION COMMITTEE

T. B. Colby, D. B. C., *Chairman*

Phil Wood, D. Y. C.  
Esmond Avery, B. Y. C.  
Justin Fleming, G. L. Y. C.  
Melvin Burr, V. B. C.

Hubert H. Hall, E. Y. C.  
Howard Fish, E. Y. C.  
Alice Herschman, D. B. C.  
William Joy, O. C.

## LADIES' ENTERTAINMENT COMMITTEE

Mrs. E. E. Noble, C. Y. C., *Chairman*

Mrs. Stanley Gardner, C. Y. C.  
Mrs. F. W. Roberts, C. Y. C.  
Mrs. Wilbur Wright, C. Y. C.  
Mrs. O. G. Voss, C. Y. C.  
Mrs. Harry C. Kendall, D. Y. C.  
Miss Florence Wilson, B. Y. C.  
Mrs. F. W. Wakefield, V. B. C.

Mrs. E. H. Reed, T. Y. C.  
Mrs. E. B. Gillette, T. Y. C.  
Mrs. R. A. Leutknecht, T. Y. C.  
Mrs. W. P. Hurford, V. Y. C.  
Mrs. F. B. Parsons, V. B. C.  
Mrs. Edward W. Knevels, D. Y. C.

## OTHER SPORTS COMMITTEE

Walter Parker, D. Y. C., *Chairman*

George E. Van, D. Y. C., *Vice-Chairman*

John Cornish, T. Y. C.  
A. B. Heavenrich, D. Y. C.  
Everitt Lausten, D. Y. C.  
Howard Finch, C. S. Y. C.  
W. G. Stockham, D. Y. C.  
O. R. Benjamin, E. B. C.

Charles Wallack, C. Y. C.  
Clarence Pinkston, D. Y. C.  
Dr. A. B. Jones, D. Y. C.  
Don McClellan, D. Y. C.  
Walter Bauman, D. Y. C.  
Dr. Horten Kimball, D. Y. C.

## ENTERTAINMENT COMMITTEE

Ed. H. Zerbe, D. Y. C., *Chairman*

Commodore T. B. Alexander, P. I. B. Y. C.  
Commodore O. R. Benjamin, E. B. C.  
Commodore C. Earl Dawson, D. Y. C.  
Commodore Lee Keller, S. Y. C.  
Commodore Joseph Krolick, D. B. C.  
Commodore E. T. Knowlson, D. B. C.  
Commodore Paul J. Kuebler, T. Y. C.  
Jack E. McKenna, T. Y. C.  
Harry Peterson, B. Y. C.  
Lew H. Tanney, D. Y. C.

Walter M. Parker, D. Y. C.  
Norman Soderlund, D. Y. C.  
Elliott H. Shumaker, D. Y. C.  
Jos. A. Summerlee, D. Y. C.  
Al. P. Tallmann, M. R. Y. C.  
Commodore John A. Tallmann, T. Y. C.  
Commodore Chas. A. Thornburgh, S. Y. C.  
Elmer Ulrich, D. Y. C.  
Commodore R. J. Woodward, B. L. Y. C.  
Commodore W. J. Wright, C. Y. C.

## MODEL YACHT COMMITTEE

Commodore Harry Miller, D. Y. C., *Chairman*

Gar Wood, Jr., D. Y. C., *Vice-Chairman*

Commodore A. H. Beecher, C. M. Y. C.  
Walter C. Foot, D. M. Y. C.  
Ed Miller, S. S. C.

Commodore A. T. Ellis, A. M. Y. C.  
George Tanner, D. M. Y. C.

## POWER BOAT REGATTA COMMITTEE

Commodore A. R. Hackett, D. Y. C., *Chairman*

Commodore Charles Thornburgh, S. Y. C.  
Commodore Len Stack, L. Y. C.  
Commodore E. T. Affleck, T. Y. C.  
William Kittles, B. Y. C.  
Commodore William P. Hurford, V. Y. C.

Commodore Hugh B. Gunnison, E. B. C.  
Commodore E. E. Noble, C. Y. C.  
Commodore T. M. Steinhart, L. Y. C.  
Art Summerly, D. Y. C.  
Horace Mayer, V. Y. C.

## SAIL YACHT REGATTA COMMITTEE

Commodore William A. Wilson, B. Y. C., *Chairman*  
Commodore T. B. Farnsworth, B. Y. C., *Vice-Commodore*  
in charge of Deep Water Race

Commodore R. A. Leudtke, T. Y. C.  
Commodore H. S. Walker, E. B. C.  
Commodore Charles Thornburgh, S. Y. C.  
Commodore E. T. Knowlson, D. B. C.  
Albert J. Grundy, D. Y. C.  
Alexander Winton, Jr., C. Y. C.

Commodore George Wakefield, V. B. C.  
Commodore Stanley Puddiford, C. S. Y. C.  
Commodore Harry Miller, D. Y. C.  
R. Ray Daley, D. Y. C.  
Richard Foote, T. Y. C.  
Carl Miller, S. S. C.

## SAILYACHT RECORD AND TIMING COMMITTEE

R. Ray Daley, D. Y. C., *Chairman*

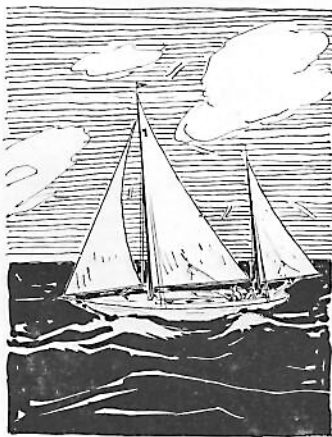
Harold Hall, D. Y. C.  
Charles Lynch, D. Y. C.  
Commodore R. A. Leudtke, T. Y. C.

Charles Kramb, T. Y. C.  
Clifford Russell, D. M. Y. C.  
Art Mander, C. Y. C.

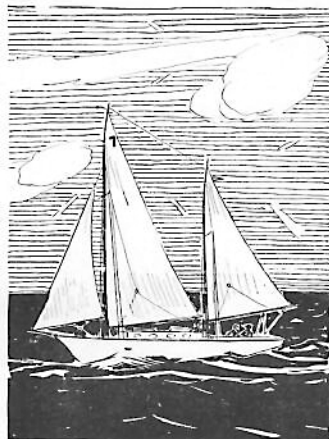
## SPECIAL HANDICAP CLASS

A new class will be introduced this year which will take in all craft not eligible in the established classes and in which the Universal Rule has not worked out satisfactorily. This should interest owners dissatisfied with the Universal Class and those who have never raced because of apparent odds against their boats. Complete information and ratings will be given out by the Sail Yacht Regatta Committee. Please apply early.

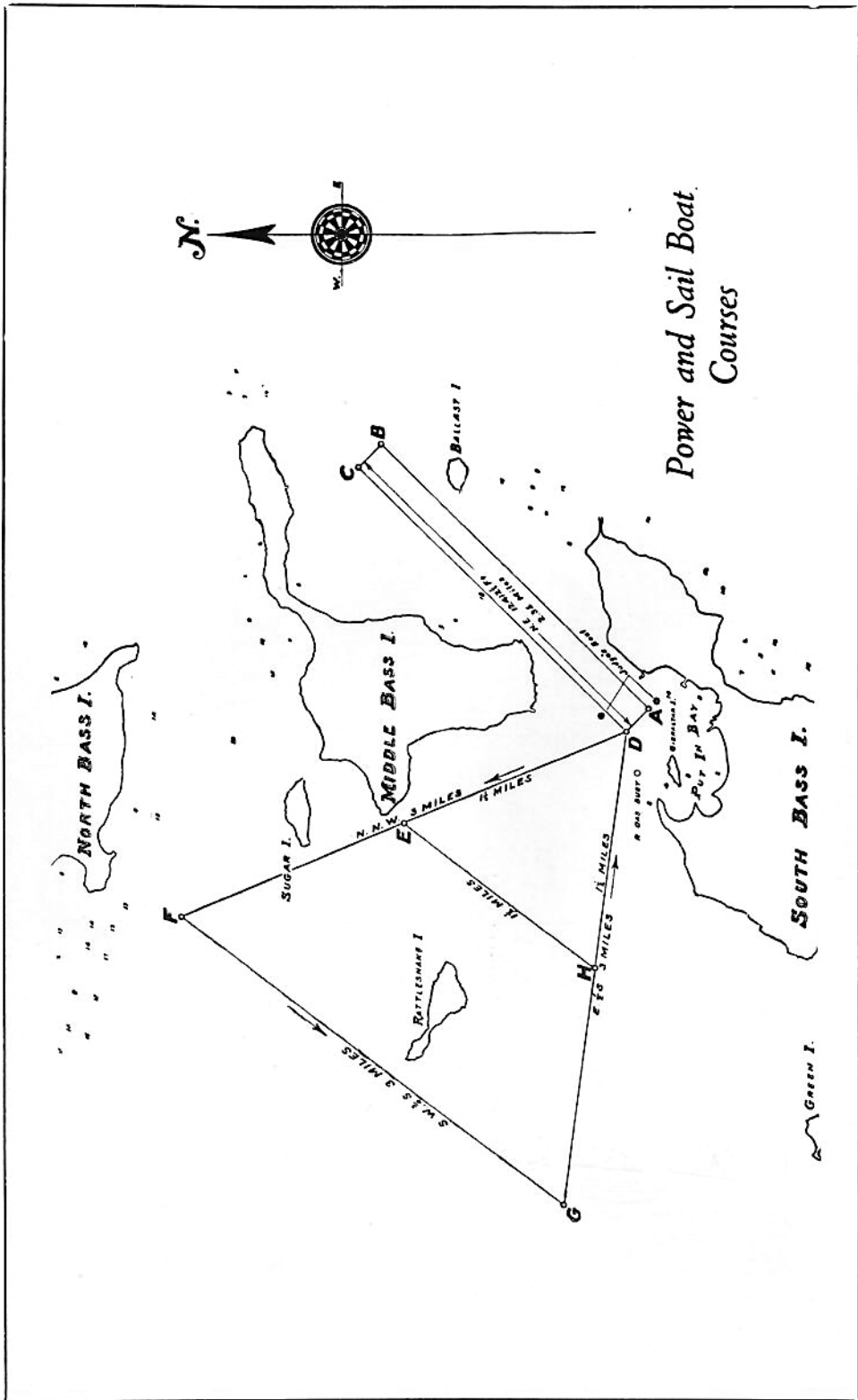
## TYPES OF BOATS



Yawl



Ketch



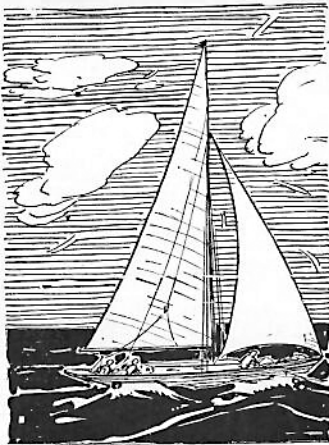
# SAIL YACHT PROGRAM

*August 19, 20 21*

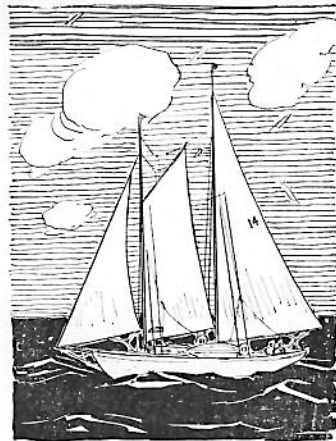
## STARTING TIMES

Warning Gun.....	8:30 A. M.
Preparatory Gun .....	8:45 A. M.
Class R Start.....	8:55 Long Course
6 Meter Class Start.....	9:00 Long Course
22 Sq. Meter Class Start.....	9:05 Long Course
H, J and A Classes Start.....	9:10 Long Course
Yawl Class Start.....	9:15 Long Course
Schooner and Ketch Class Start.....	9:20 Long Course
Class C Start.....	9:25 Long Course
Special Handicap Class Start.....	9:30 Long Course
Star Class Start.....	9:35 Short Course
Class K Start.....	9:40 Short Course
Class CK Start.....	9:45 Short Course
Class CK (Free for All) Class Start.....	9:50 Short Course
Club Sloop Class Start.....	9:55 Short Course
Cabin Cat Class Start.....	10:00 Short Course
Matthews Sailer Class Start.....	10:05 Short Course
Development Class Start.....	10:10 Short Course
S. S. C. 18-foot Class Start.....	10:15 Short Course
Teal and Snipe Classes Start.....	10:20 Short Course

## TYPES OF BOATS



Sloop



Schooner

## RACING RULES FOR SAIL YACHTS

Certificate of measurement must be filed with entry. The Sail Yacht Regatta Committee reserves the right to order any yacht entered re-measured.

Races for all classes, starting five minutes apart on Monday, Tuesday and Wednesday mornings; starting first class at 8:55 A. M.

All races under Y. R. U. and I. L. Y. A. Rules, as amended to date.

In class C. K. championship flag goes to skipper making highest percentage, cup to club having highest percentage with three boats.

Entries for all point races must be made with Sail Yacht Regatta Committee at headquarters before 6 P. M. Sunday, August 19th, unless competing yacht arrives too late to enter before this time.

Alterations of the race program or sailing course may be made at the discretion of the Sail Yacht Regatta Committee. Such changes will be posted on Bulletin Board.

Numbers must be carried by each yacht on each side of its mainsail. These numbers will be supplied by the Sail Yacht Regatta Committee at Headquarters.

No person other than the Judges, Regatta Committee and Clerks will be allowed on Judges' boat without the consent of the Chairman of the Sail Yacht Regatta Committee.

All stakes to be left to port unless changed by Regatta Committee. If the Regatta Committee decides to reverse the course and have stakes left to starboard, a green flag will be flown from judges' boat. Red flag will mean all stakes to port. The judges' boat will fly a white flag with blue letters R. C.

Guns must not be fired from any yacht within one hour of the time of starting races, and not until after every yacht has crossed the finish line.

All vessels following the races must keep to leeward, and at such distance as not to interfere with the maneuvers of the competing yachts.

The races are open to every yacht which complies with the rules and which is regularly enrolled in any club in the Inter-Lake Yachting Association, Y. R. U., or which has been invited to participate in the races.

All boats sailing the long outside course will have four hours' time limit.

All boats sailing the short inside course will have three hours' time limit.

### *Sailing Courses*

The course for all series races for sailing yachts in Classes 6 Meter, Universal, H, J, A, C, R, 22 Sq. Meter Special Handicap, Y and SCH will be triangular, starting from a line between a flag buoy off the east end of Gibraltar Island and a similar flag buoy in line with the west end of Middle Bass, to and around



## RACING RULES FOR SAIL YACHTS

(Continued)

stake three nautical miles N. N. W., thence to and around a stake three nautical miles S. W. three-quarters S., thence to and around a stake three nautical miles E. one-half to S. and across starting line between starting stakes. In finishing yachts must cross the starting line in the opposite directions from which they start. All stakes must be left to port, unless otherwise ordered by the Sail Yacht Regatta Committee as heretofore provided.

The course for Classes, Star, K, CK, CK Free-for-all, C. S., Teals, Snipes, S. S. C. 18 Footers, CC, Matthews Motor Sailers, and Development Class, starting from the same line, will be a shorter triangle with the same compass courses, but with one and one-half miles to the side, or a total of four and one-half nautical miles.

### RULES COVERING CLASS "Y" (CRUISING YAWLS)

All yachts in this class will be governed by the Y. R. U. rules, and will obtain their measurement rating under the Y. R. U. rules, with following exceptions:

Use of pot lead or similar compounds prohibited.

Measurement shall be determined with full cruising equipment aboard, and all such equipment shall be carried aboard throughout all races (not including dinghy).

Two per cent will be added to actual sailing time of yachts without engine as allowance to yachts with engine.

Yachts equipped with engine shall have engine sealed.

There will be no restrictions on the number of passengers carried in this class of races.

CLASS STAR: Rules of the Star Class Yacht Racing Association to govern.

### TIME ALLOWANCE

Time allowance will be computed on yachts in Classes "A", "SCH" and "Y", under the formula and table of the Yacht Racing Union.

### WATCH BULLETIN BOARD

There will be a Bulletin Board at Headquarters where changes in program and special instructions will be posted throughout the week.

All yachts whose preparatory gun has not been fired must keep clear of starting line. Any yacht willfully violating this rule will be disqualified.

## POWER BOAT PROGRAM

### *Classification*

Cruisers of all sizes and types race in one class.  
550 cubic inch restricted class displacement racers.  
Free-for-all unlimited class displacement racers.

#### TUESDAY, AUGUST 20—Morning Events

*Preparatory Gun 9:55 A. M.*

Class	Start	Distance	Type of Boats
Cruisers	10:00	5 Miles.....	All sizes and types of Cruisers
550	10:45	10 Miles.....	550 Cubic inch Displacement Racers
Open	11:15	10 Miles.....	Free-for-All Displacement Racers

#### TUESDAY, AUGUST 20—Afternoon Events

*Preparatory Gun 1:55 P. M.*

Class	Start	Distance	Type of Boats
Cruisers	2:00	5 Miles.....	All sizes and types of Cruisers
Open	2:45	10 Miles.....	550 cubic inch Displacement Racers
550	3:15	10 Miles.....	Free-for-All Displacement Racers

## MODEL YACHT RACES

All members of Inter-Lake Yachting Association clubs and accepted model yacht clubs are eligible to enter these events. All entries must be in the hands of Com. Harry Miller, 3431 Parker Ave., Detroit, by August 16. Racing will start promptly at 9:30 A. M., August 18. There will be races for:

International Class A sailyachts.

42-inch Sea Scout sailyachts.

50-800 Marblehead sailyachts.

Displacement hull powerboats, limited to 50 inches O. A.

Prizes will be awarded for three places in each event.

## POWER BOAT RACING RULES

Last year's simplified power boat racing rules again will be enforced this year, with some modifications. A goodly number entered last year and it is hoped that with these simpler rules and shortened races, more owners may be encouraged to enter their boats.

All racing will be held on one day as per program. This will leave plenty of time for using the boats for pleasure.

Instead of starting all cruisers at once, they will be started on their handicapped time and finish together. Runabouts will be raced in two classes and rated according to piston displacement of their engines.

1. Entries for all power boat races shall be filed at Inter-Lake before 9 A. M., August 20.
2. There shall be two distinct races for each class.
3. All boats in the cruiser class shall start on their handicapped time.
4. All cruisers shall race in one class irrespective of class and speed.
5. Speed boats shall race in two classes, 550 cubic inches, and under displacement and displacement boats unlimited.
6. All races shall be run over the same course, of approximately  $2\frac{1}{2}$  statute miles to the lap.
7. Cruiser races, 5 miles total distance, twice around.
8. Speed boat races, 10 miles total distance, 4 times around.
9. Cruisers shall be rated for first race according to owner's declared speed, and any boat exceeding owner's declared speed shall be penalized by having twice the difference between the declared time and actual time added to the actual time.
10. Cruisers shall be rated for second race according to fastest lap made in first race and the same penalties as to excess speed to apply as in first race.
11. Deliberate loafing on the course, running off the course, or turning, while in a race, in such a way that may interfere with other contestants, will be interpreted as infractions of the rules, and any boats so doing are subject to disqualification by the judges.

# WHAT - WHEN - WHERE

## The Program at a Glance

	SAILYACHTS	POWERBOATS	MODEL YACHTS	AVIATION	ENTERTAINMENT	OTHER SPORTS
SATURDAY AUGUST 17th	6:00 p.m. Start Deep Water race at Detroit River Light.					
SUNDAY AUGUST 18th	Finish Deep Water Race. Finish races from Rocky River, Vermillion, Sandusky, Toledo and Amherstburg, to Put-In-Bay.  6:30 p.m. Organization dinner for Flag Officers and Committee Chairmen at Bayview House.		9:30 a.m. Start of model sailyacht and powerboat regatta.		4 p.m. to 6 p.m. Commodore's reception aboard flagship. All registered yachtsmen and ladies invited.	
MONDAY AUGUST 19th	8:30 a.m. Warning gun of first series, sailyacht regatta.				8:00 p.m. Open air boxing show followed by refreshments. No charge.  10:00 p.m. Torch light parade.	3:00 p.m. Base ball game at ball park.
TUESDAY AUGUST 20th	8:30 a.m. Warning gun of second series, sailyacht regatta.	9:55 a.m. Preparatory gun of first heats, powerboat regatta.  1:55 p.m. Preparatory gun of second heats, powerboat regatta.		11:00 a.m. Arrival air cruises from Erie and Detroit. 12:30 p.m. Luncheon at Bayview house, followed by golf and catboat race. 6:30 p.m. Cocktail hour at Hotel Crescent.	2:30 p.m. Ladies' card party at Bon Air Hotel. Registered ladies invited.  9:00 p.m. Commodore's Ball at Colonial Ballroom.	7:00 p.m. I. L. Y. A. bowling meet at Colonial alleys.
WEDNESDAY AUGUST 21st	8:30 a.m. Warning gun of third series, sailyacht regatta.  3:05 p.m. Ladies' Star boat race.  4:00 p.m. Commodore's catboat race.  8:00 p.m. Distribution of prizes for all events at Crescent Hotel Pavilion.				6:30 p.m. Yachtsmen's dinner at Crescent Hotel.	1:00 p.m. Swimming meet at City dock.

Watch Bulletin Board at Put-In-Bay Yacht Club for other events which will be added, and to changes in this program. Results of all events will be posted on Board as soon as possible after completion of event.

## GENERAL INFORMATION

HEADQUARTERS: Put-In-Bay Yacht Clubhouse.

SECRETARY-TREASURER'S *office hours*: 4:00 P. M. to 6:00 P. M.



All yachtsmen and their ladies must register.

All yachtsmen of the Inter-Lake and invited clubs, whether yacht owners or not, are invited and urged to participate in all of the events of the week and have their ladies participate wherever possible, to make the week successful in every way.

Obtain entry blanks, racing numbers and racing information at Headquarters.

Every yacht should be measured by the measurer of its home club and measurer's signature should be on entry blank.

Sign your entry and state clearly all answers to questions.

No entry fee will be charged in any event.

Get your entry in early to assist the committees.

Two or more entries must be received or an event will be cancelled.

Prizes in any event will be awarded according to number of entrants. If two entrants, only one prize will be awarded; if three entries, two prizes, etc.

Postponements, changes in courses or events, results and all official announcements will be posted on the Bulletin Board at Headquarters. Watch it.

All events of the regatta will be started promptly on time. Be on the line.

The official time used at meet will be Put-In-Bay Yacht Club time, according to clock at Headquarters.

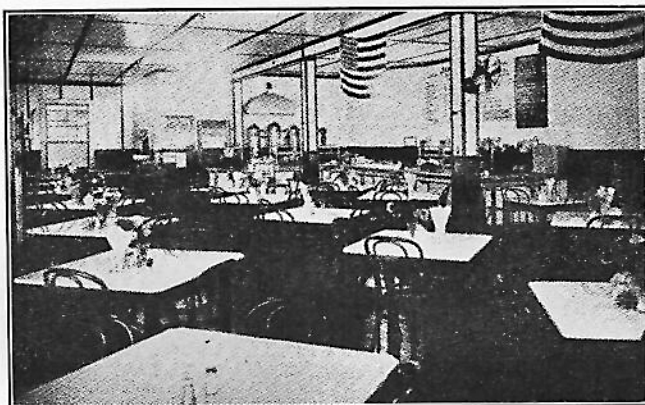
Tickets for the Commodore's Ball, and Yachtsmen's Dinner on sale at Headquarters. Get yours at once, only a limited number.



## MATTHEWS CRUISERS and SAILER

The name Matthews has always stood for quality and honest construction since 1890. The newest member of the Matthews family, the Matthews "Sailer," has every Matthews characteristic of husky ruggedness and sleek beauty. The "Sailer" is the fastest growing class of stock cruising sloop on the Lakes. A cordial invitation to visit our plant is extended to every yachtsman at the Regatta.

THE MATTHEWS CO.  
PORT CLINTON, OHIO



### JIM'S PLACE

JAMES A. POULOS, Proprietor

RESTAURANT AND CAFETERIA SERVICE

Full line of Good Liquors, Wines and Beer on Draught and Bottle. Excellent Food and Entertainment.

PUT-IN-BAY, OHIO

*Yachtsmen's Headquarters  
Where Yachtsmen Meet to Eat!*

### 57 YEARS OF CONTINUOUS SERVICE

IF IT'S MADE OF CANVASS — WE MAKE IT



SAIL MAKERS—RIGGERS  
YACHT CANVASS  
CLUB BURGEES  
ENSIGNS — SACKS  
WOODBIDGE AT BATES  
DETROIT RANDOLPH 8341

# Chris-Craft

and

## MATTHEWS

Distributors

---

### YACHT BROKERS

---

BOATS and MOTORS  
Of All Types

## GREGORY BOAT CO.

6611 E. Jefferson - Detroit

# ENDURO

REPUBLIC'S PERFECTED  
STAINLESS STEEL

## The Proven Metal For Marine Work

The resistance of Republic's Enduro stainless steel to salt air, spray and immersion in sea water renders this metal particularly well adapted to all marine construction.

### GALLEY APPLICATIONS—

Sinks, drainboards, work table tops, cooking utensils, floor tread and many other uses.

### PROPULSION PARTS—

Included (in this list) are pump shafts, valves and parts, propellers, nuts, bolts and fittings, mufflers, etc.

### DECORATIVE USES—

Deck and cabin fixtures, shower cabinets, dresser tops, hand rails, door panels, sashing and saddles, mirrors, flag poles and fittings and many other applications.

Write for the New Enduro 18-8 Booklet, sent free upon request

## REPUBLIC STEEL CORPORATION

GENERAL OFFICES: YOUNGSTOWN, OHIO



## COMPLETE RACE RESULTS

of the I. L. Y. A. Regatta

will be found in the September issue of

## YACHTING NEWS

Leave your name and address and 15 cents in box provided for the purpose at Headquarters and copy will be mailed to you.

Name.....  
Address.....City.....

Or check here  and Yachting News will be mailed to you for one year. Your \$1.50 can be mailed later.

# N U T S

U. S. S. & S. A. E.

STANDARD &

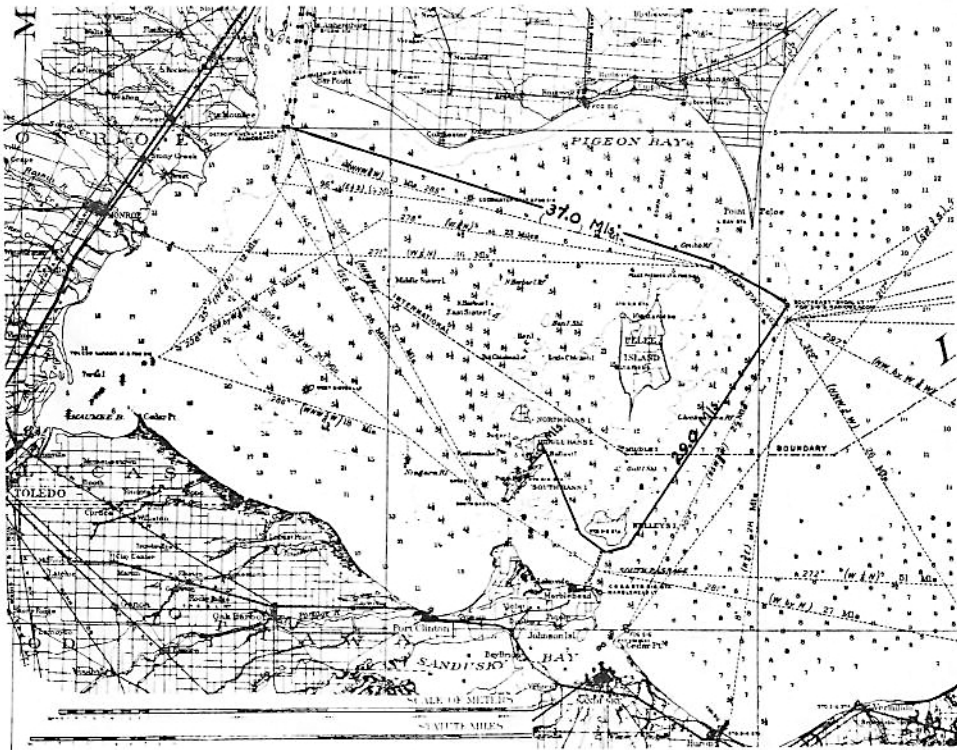
SPECIALS

Steel or Brass

## DIAMOND SCREW PRODUCTS CO.

4550 Maybury Grand Ave.  
DETROIT

## COURSE OF THE DEEP WATER RACE



### THIRD ANNUAL INTER-LAKE YACHTING ASSOCIATION DEEP WATER RACE

A new and shorter course has been laid out for this years' Deep Water event which should appeal to all sailors who like open water racing.

The distance is approximately 58 miles and the entire course so located that in case of calms or extremely bad conditions, only a short run will be required to Put-In-Bay. The start is off Detroit River Light.

Warning Gun	.....5:30 P. M.....	White Flag
Preparatory Gun	.....5:55 P. M.....	Blue Peter
Starting Gun	.....6:00 P. M.....	Checkered Flag

Complete information will be mailed, on application to Commodore J. B. Farnsworth, 2906 E. Jefferson Avenue, Detroit.

### LADIES CARD PARTY

Ladies Card Party, which will be held at 2:30 P. M. August 20, at the Bon Air Hotel, is open to all registered ladies connected with the Inter-Lake Yachting Association. There is no charge. The party will be limited to 50 tables and souvenirs will be given to each lady in addition to table prizes. Tables will play any card game they choose. Reservations must be made at time of registration.



## QUALITY CASTINGS

GRAY IRON

HIGH TEST IRON

ALLOY IRON

●

We Specialize in Small and  
Medium Pressure Castings —

Let us put our twenty-eight  
year's experience to work on  
your problems.

●

**LITTLE BROS.  
FOUNDRY CO.**  
Port Huron, Mich.

## PAINTS

Varnishes, Enamels  
and  
Production Finishes



**Schermerhorn Paint Products, Inc.**  
*Manufacturers*  
5400 E. Nevada Avenue  
DETROIT



MAY fair weather and Interlake luck prevail to make the 1935 Regatta the most successful in the Club's history. This season's line-up of fast sailing craft and power boats promises plenty of racing thrills and some sensational new records. Congratulations to the winners!

Compliments of the manufacturers of  
B & L Cold Finished Steel

- Turned and Ground Shafting
- Alloy Steels
- Extra Wide Flats
- Special Sections
- Ultra-Cut Screw Stock

**BLISS & LAUGHLIN, INC.**  
HARVEY, ILL. Subs. Offices in all Principal Cities BUFFALO, N.Y.

## BOAT SUPPLIES

**DUPONT "DULUX" Marine**  
Finishes give a lustre and beautiful appearance hard to equal.

Also in stock many other items, such as:  
Aluminum, Brass, Bronze, Copper—in sheets, rods and wire, Bolts, Nuts, Screws, Washers, Turabuckles, Wire Rope, Manila Rope, Keystone Oils and Greases, Tools of every description, etc.



**THE CHAS. A. STRELINGER CO.**  
**Machinery—Tools  
Metals—Supplies**  
149 E. Larned St. Detroit  
Cadillac 7080  
**WHOLESALE — RETAIL**

# *Keep It Alive!*

The tradition of your favorite sport, yachting, must be perpetuated. Only by dint of much work and labor do these men who head the Interlake each year bring to our lives a keener relish, a finer fellowship, a deeper joy because of their personal sacrifice of time. Your contribution, small as it may be, helps maintain the yachtsmen's fund of the I. L. Y. A.; helps the sport and its devotees.

*[ Can we depend on  
you for your bit?  
Make remittance ]*

*to*

YACHTSMEN'S FUND, I. L. Y. A.

LEE B. KELLER, *Secretary*

*care of* THE COMMERCIAL BANKING AND TRUST CO.

SANDUSKY, OHIO

# RESCO

COLD FINISHED STEELS

## ROTARY ELECTRIC STEEL CO.

DETROIT

# The Taylor Supply Company

DETROIT

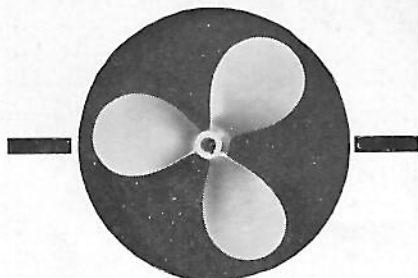
STEEL  
FITTINGS

WROUGHT IRON

PIPE FABRICATION

POWER SPECIALTIES

CAST IRON PIPE VALVES



### Let Their Choice Be Your Guide!

Leaders in the marine field use and recommend Federal-Mogul propellers. There is a Federal-Mogul Tru-Pitch Standard, Tru-Pitch Gold Seal, or Equi-Poise custom-engineered propeller which ideally meets the requirements of your boat. Ask your dealer for complete details.

#### STRUT BUSHINGS

Gar Wood, Inc., Chris-Craft Corp. and others standardize on Federal (F-16) high-lead bronze, developed and especially suited to bushing of under-water shafts. Complete catalog FREE.

**FEDERAL - MOGUL CORPORATION**

MEMBER M. P. M. A.

DETROIT, MICHIGAN

*Inside and Outside...*  
there's a Glidden Marine Finish

#### RIPOLIN

*A durable enamel finish—used and recommended by yachtsmen everywhere.*

#### GLIDDEN SPAR

*Hot sun and heavy weather don't hurt it.*

#### HARD RACING BOTTOM FINISH

*Anti-fouling — extremely durable.*

#### SPEED-WALL

*For quick drying interior finish.*

**THE GLIDDEN CO.**

Chicago-Detroit-Toledo

Buffalo-Cleveland

*"Everywhere On Everything"*

## In Memory of Our Past Commodores

GEO. W. GARDNER, C. Y. C.  
JOHN E. GUNCKEL, T. Y. C.  
GEO. H. WORTHINGTON, C. Y. C.  
S. O. RICHARDSON, JR., T. Y. C.  
ALEX. I. McLEOD, D. Y. C.  
GEO. T. BLISS, E. Y. C.  
WM. R. HUNTINGTON, S. Y. C.  
C. C. WARREN, S. Y. C.  
HENRY TRACY, T. Y. C.  
FRANK W. FLETCHER, T. B. Y. A.  
ALEXANDER WINTON, C. Y. C.  
F. W. ROBERTS, C. Y. C.  
THOS. A. DeVILBISS, T. Y. C.  
C. W. KOTCHER, D. Y. C.  
A. A. SCHANTZ, D. Y. C.  
F. W. WAKEFIELD, V. B. C.

## MEMORIAL TROPHIES

*for Class "R" Racing*

The Captain Louis G. Northrup Memorial Trophy is a cup foundation established by Mrs. Seymour H. Knox, Jr., of Buffalo, and presented to the Inter-Lake Yachting Association in perpetuation of the memory of her father, the late Captain Louis G. Northrup, of the Buffalo Canoe Club. The deed of gift states that the Cup will be held for one year by the winner instead of the Club. This feature offers an added incentive to personal effort on the part of "R" Class Racing devotees.



\* \* \*

The Parsons Trophy was financed by popular subscription among the yachtsmen of the Inter-Lake, no subscription for more than five dollars being accepted. In presenting the trophy to the Inter-Lake, it was given with the understanding that it was a perpetual, that a replica or plate accompanied by a silk flag would pass to the permanent possession of each year's winner. It was also agreed that no class would be stipulated but that the I. L. Y. A. annually designate the class it was to be raced for.

## I. L. Y. A. PRIZES

Commodore Gar Wood.....	Trophies
Commodore W. A. Wilson.....	Trophy
Bayview Yacht Club (Toledo).....	Trophy
Vermilion Boat Club.....	Trophy
Crescent Sail Yacht Club.....	Trophy
Lorain Yacht Club.....	Trophy
Buckeye Lake Yacht Club.....	Trophy
Sandusky Yacht Club.....	Trophy
Hyde Windlass Co.....	Propeller
Eagle Manufacturing Co.....	2½ Gallon Flexo Spout Can
Detroit Brewing Co.....	Case of Beer
Pratt & Lambert, Inc.....	1 Gallon Marine Deck Paint
American Pad & Textile Co.....	2 Cushions
Bond Electric Corp.....	"Mile Range" Flashlight
Berry Bros., Inc.....	3 Gallons Paint and Varnish
Edward Smith & Co.....	2 Gallons Aquatile Varnish
S. Appel & Co.....	Yachting Cap
Matthews Company.....	3 Prizes
Federal-Morgan Corp.....	Propeller
Yachting News.....	Subscriptions
Henry H. Smith & Co.....	
Bakelite Corp.....	

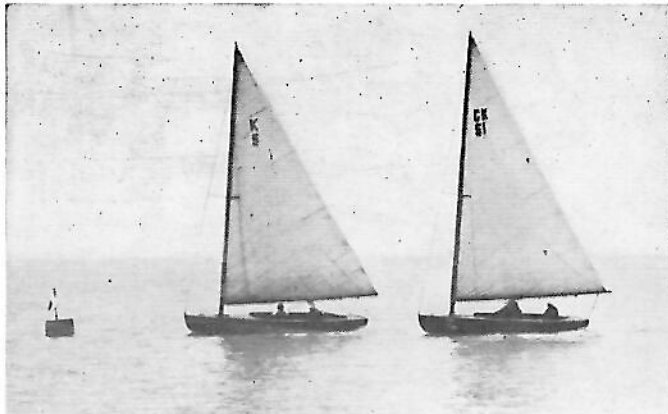
## OTHER PRIZES

The Inter-Lake Yachting Association is indebted to the donors of prizes for the trophies and prizes they have presented to the Association, and the Trophy Committee wishes to thank all of these donors and assure them that their donations are sincerely appreciated. The committee reserves the right to rearrange prizes as necessary.

A number of prizes were received too late to list the donors' names.

## DEEP WATER RACING CLASS

A racing division of the Deep Water event will be started if three or more boats are entered. Please enter early so that plans for the division can be made.



*Compliments*

Schnoor & Fuchs

Colonial Dance Hall

Bay View House

Millers Boat Livery

Park Hotel

Hotel Crescent

Siebert Lunch

Adams Taxi Service

PUT-IN-BAY, OHIO

**C. A. ROBERTS Co.**

*Distributors*

**SHELBY SEAMLESS STEEL TUBING**



CHICAGO — DETROIT — INDIANAPOLIS — ST. LOUIS

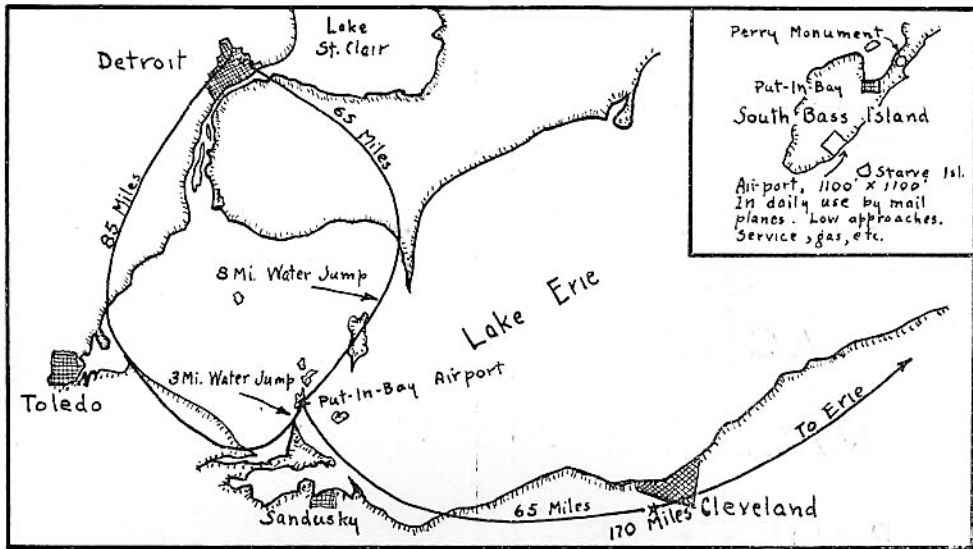
*Best Wishes of*

**Inland Steel Company**  
of Chicago



Detroit Office

**1132 Fisher Building**



### AVIATION CRUISES

Air cruises will leave Erie, Pa. airport under the leadership of Hubert Hall at 9 A. M. and from Detroit City Airport under leadership of Tom Colby, at 10 A. M., August 20, to fly to Put-In-Bay Airport. Cleveland planes will join the Erie flight at Cleveland Municipal Airport. Following the shore, ships have only a three mile stretch of water to cross to the island. The Put-In-Bay Airport is 1,100 feet square with beach on the S. W., telephone wires, 12 feet off the ground along the N. E. and vineyards on the other two sides, making practically the entire landing area available.

Those planning to attend should inform Tom Colby, 211 Leib St., Detroit, so that catboat and golf privileges can be arranged for. If requested the committee will try to place those interested aboard the racing yachts in the Wednesday morning race. As these places are limited, an early request is recommended. There will be no charge for use of the airport. Gasoline and service are available but as the local hangars are filled stake-down service will be given without charge. See chart for location, distances, etc.



*Yours For Relaxation . . .*

**N. J. "MIKE" SHEA**  
**YACHT BROKER**

*. . . Cleveland, Ohio*



*Compliments of*



ACME  
MACHINE  
PRODUCTS  
COMPANY

*Compliments*

*of a*

**FRIEND**



*Compliments of a*

**FRIEND**



# STEEL CASTINGS

## The Finest Money Can Buy

A Quarter Century of experience in producing steel castings for many classes of machinery and equipment has resulted in an organization familiar with the most exacting requirements for inherent steel properties, and fitted for workmanship of a high standard.

For Steel Castings to meet the requirements of each individual job—strictly true to pattern—solid—with fine surface smoothness—and uniformly machineable in the machineable grades—

**SPECIFY—FARRELL-CHEEK STEEL CASTINGS**

*at Your Service*

A MODERN FOUNDRY—COMPLETE PATTERN SHOP  
MACHINE SHOP FACILITIES

**THE FARRELL-CHEEK FOUNDRY COMPANY**

Lane Street  
SANDUSKY, OHIO

109

---

## ON THE LAKE OR IN THE HOME



## ARMCO METALS ARE OUT IN FRONT

Boats bent on pleasure, sport, and ships for the world's cargoes—all bear eloquent testimony to the versatility of Armco Iron and Steel Sheets.

From bright-spangled galvanized sheets to gleaming sheets of permanent stainless steel, boat and ship builders will find a correct and thrifty Armco grade for every need. And so it is in the home, to which every

gay yachtsman and hardy seafarer turns after landfall. Armco Sheet Metals in roof-drainage work, furnace and air conditioning system, porcelain-enameled range, refrigerator, washer and sink, mean a much brighter home and a home free from common sheet metal troubles.



Ask for "Armco" by name, when you buy sheet metal or any sheet metal product.

THE AMERICAN ROLLING MILL COMPANY, MIDDLETOWN, OHIO

---

**FIRE  
MARINE  
CASUALTY  
INSURANCE**



**Kelly-Halla-Peacock, Inc.**

Buhl Building

Randolph 1026 Detroit, Michigan

*It's Always Smooth Sailing  
with*

**HETTRICK BELTING**

**MAZABAR  
(CONVEYOR)**

**BLACK BULL SPECIAL  
(ELEVATOR)**

**HETMACO  
(TRANSMISSION)**



**THE HETTRICK MFG. CO.  
TOLEDO, OHIO**

*America's Largest Manufacturer of  
Canvas Goods*

**WHITEHEAD PRODUCTS**



Stamped and Pressed Metal Parts  
Manufactured from all metals, in  
heavy, medium and light gauges.

Special and S. A. E.  
Standard Plain Washers  
Assemblies and Machining  
of Parts

*Automotive Specialties  
Hindview Mirrors*

**Whitehead Stamping Co.**

1661 W. Lafayette Blvd.  
DETROIT, MICH.

**KENDRICK  
MANUFACTURING CO.**

2724 Franklin Street  
Detroit, Mich.



**Production Manufacturers**

**BRONZE BUSHINGS  
and  
BEARINGS**



**Manufactured to Your  
Requirements  
Established 1907**

## We Believe . . .

That Vermilion is a great place to do one's yachting, and we want every Inter-Laker to come up and see us sometime - anytime.

We have a great number of yachtsmen in Vermilion and we hope they're all at the regatta to help make it the best ever.



*Best wishes from  
One of the crew this year*

# *a fine combination*

## Gulf Gasolines

No-Nox Aviation Ethyl  
That Good Gulf Gasoline  
Try Them



## Gulf Oils

Gulf Pride  
Gulf-Lube  
Be Satisfied

# GULF REFINING CO.

## Your Safety Demands . . .



The World's Leading Flexible  
Feed Line For  
**GASOLINE - OIL - GREASE**

Absorbs • Prevents  
Vibration • Breaks

THE **FLEX-O-TUBE** CO.  
DETROIT, MICH.

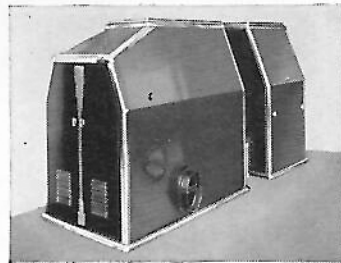




for healthful, buoyant living ~

## *Gar Wood* AIR CONDITIONING

Nothing is quite so valuable to family health and contentment in the home, as clean, filtered air and uniform temperature the year 'round. The Gar Wood Tempered-Aire System of automatic oil heating and air conditioning has proved itself in hundreds of homes.



The Gar Wood Tempered-Aire system is the builders' and home owners' choice. Owners say no other unit is as economical . . . no other one has the built-in economizer that prevents waste heat from escaping up the chimney. Before you buy or build or replace your present heating system, let us explain the facts.

AIR CONDITIONING DIVISION

# GAR WOOD INDUSTRIES, INC.

DETROIT, MICHIGAN

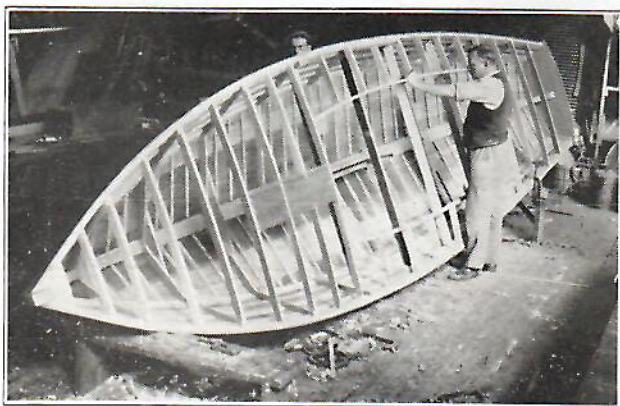
**YOU'RE  
ALWAYS  
WELCOME  
AT POULIOT'S**



The 18 Footer. Latest addition to the fine fleet of standardized sailcraft. See it at the I.L.Y.A. Regatta.

Whether you are a sailor, a powerboat fan, or you are in the boat business, you are always welcome at our plant.

We always have boats under construction on the floor. You will be interested in seeing how fine boats are built, under ideal conditions, with the latest equipment and of the best materials.



Expert workmanship goes into every Pouliot boat and remember, "A good boat need cost no more."

Demonstrators are usually available. Come in any time and ask to sail one. You are under no obligation.

Our brokerage department can always dispose of your old boat.



**RUSSELL J. POULIOT, INC.**

9666 E. Jefferson Ave.

Detroit, Michigan

CRUISERS — RACING CRAFT — REPAIRS — STORAGE — SUPPLIES — SPARS